

Thanksgiving
Specials for
everyone!!



Thanksgiving Day
Thurs., Nov. 22

NOVEMBER 21

FRUIT OR CREAM
STON
PIES

C & H QUALITY
POWDERED OR
BROWN SUGAR

1-pound
pkg.

10^c



OCEAN SPRAY
CRANBERRY
SAUCE

12-oz. can 19^c whole or strained

BIRDSEYE
FROZEN VEGETABLES

french green beans, mixed vegetables,
cut corn or chopped broccoli

regular
size pkg. 19^c

SUNRIPE JUMBO
RIPE
OLIVES
tall
can 25^c

GOLDEN RANCH all purpose corn bread stuffing. 14 oz. pkg. **Stuffing Mix** 49^c
TOM SAWYER—best for parties or special treats. 13 oz. can **Mixed Nuts** 79^c
LIPTON makes delicious soup! or delicious Calif. onion dip. **Onion Soup Mix** 2 pgs. 35^c
CRYSTAL WHITE detergent lives up to its name! 48 oz. bottle **Liquid Detergent** 69^c

WHOLE KERNEL
GREEN GIANT
NIBLETS CORN
12-oz. can 19^c

MA PERKINS—HALVES OR SLICED
FREESTONE PEACHES
no. 1 1/2 can 23^c

W/SHBONE DELUXE
FRENCH DRESSING
8-oz. bottle 33^c

U.S.D.A. GRADE "A" CALIF. GROWN

**YOUNG
TOM TURKEYS**

flash
frozen
16-22 lb.
avg.

33^c lb.



GUARANTEED
MEATS

Serve with
Ocean Spray
sauce

U.S.D.A. GRADE "A" CALIF. GROWN — FLASH FROZEN

YOUNG HEN TURKEYS 8-12 lb. avg. 37^c lb.

U.S.D.A. GRADE "A" CALIF. GROWN — SMALL, YOUNG, FLASH FROZEN

JUNIOR TURKEYS 5-8 lb. avg. 49^c lb.

For those of you who prefer a Fresh Turkey, we will feature only Grade "A" California Grown Turkeys in all sizes. These are fine top quality plump double-breasted fresh birds grown on California's finest turkey ranches.

TOM TURKEYS HEN TURKEYS

16-24 lb. avg. 39^c lb. "FRESH" 49^c lb. 8-12 lb. avg.

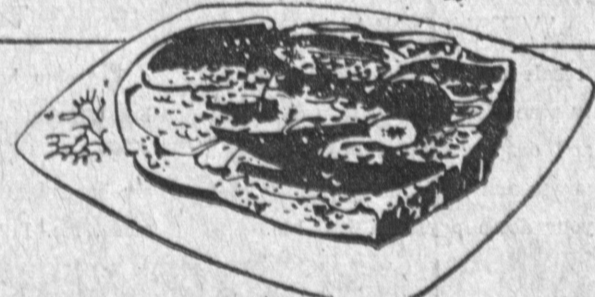
FLASH FROZEN — U.S.D.A. GRADE "A" 3-5 POUND AVERAGE

Long Island Ducklings 49^c lb.

ARMOUR'S STAR — U.S.D.A. FLASH FROZEN 6-8 POUND AVERAGE

Young Junior Geese 69^c lb.

U.S.D.A. "CHOICE" STEER BEEF
SWISS STEAK
69^c lb.



U.S.D.A. "CHOICE" STEER BEEF
Round Steak full cut 79^c lb.

U.S.D.A. "CHOICE" STEER BEEF
Rump Roast bone-in 79^c lb.

U.S.D.A. "CHOICE" STEER BEEF
**BONELESS
RUMP ROAST**
89^c lb.

U.S.D.A. "CHOICE" STEER BEEF
**BONELESS
ROUND STEAK**
98^c lb.

GROUND FRESH HOURLY
**FRESH
GROUND ROUND**
69^c lb.

FARMER JOHN OR LUER HAM
**Shank Part
Ham**
39^c lb.

FARMER JOHN OR LUER HAM
**Whole or Butt
Portion Ham**
49^c lb.

FARMER JOHN OR LUER HAM
**Center Cut
Ham Slices**
98^c lb.

SWIFT PREMIUM
SLICED BACON
1-lb. pkg. 59^c

JONES DAIRY FARM
LITTLE SAUSAGES
1-lb. pkg. 89^c

FRESH — FOR STUFFING
WESTERN OYSTERS
12-oz. jar 59^c

FRESH — FOR STUFFING
EASTERN OYSTERS
8-oz. tin 79^c

U.S. NO. 1 RUSSET
POTATOES
10 pound cello bag 35^c



FLORIDA SOFT SKIN
SWEET TANGELOS 19^c lb.

CRISP
FRESH CARROTS 2 bunches 15^c

SOFT SHELL
JUMBO WALNUTS 39^c lb.

CINNAMONY
BAKERY

DELICIOUS
Vienna Bread
loaf 25^c



ASSORTED
WHIPPED CREAM TARTS 2 for 33^c

DATE CASHEW
COFFEE CAKE 59^c ea.

GOURMET
GALLEY

RUBEN'S
All Beef Bologna
reg. 89^c 59^c lb.



ROCKY MOUNTAIN
Swiss Cheese
reg. \$1.49 98^c lb.

DEL AMO
SHOPPING
CENTER
CORNER OF
HAWTHORNE &
SEPULVEDA

**MAGIC
CHEF**

