

SCOTT ROBINSON PONTIAC

THE CAR OF THE YEAR — — — THAT LOOKS LIKE THE OTHER '63s WISHED THEY DID

1963

PONTIAC

and
TEMPEST

TRY SITTING IN A 1963 PONTIAC OR TEMPEST AND YOU WON'T WANT TO GET OUT!
 SEE AND DRIVE THE FABULOUS GRAND PRIX AND THE SASSY LE MANS SPORT COUPE
 SEE THEM TODAY IN OUR SHOW ROOM!

GIANT!

YEAR-END USED CAR CLEARANCE

SALE

LOW, LOW DOWN PAYMENTS
 NO REASONABLE OFFER REFUSED

BEFORE

YOU BUY ANY USED CAR

SEE US

1960 PONTIAC SAFARI WAGON

Light beige finish, tan interior, hydramatic, power steering and brakes, radio, heater, whitewalls. Must be seen to be appreciated.

\$2495

1959 CHEVROLET IMPALA SPORT COUPE

Red finish, matching interior trim, power-aid, power steering, radio, heater, whitewalls, local one owner car. Only 27,000 actual miles.

\$1895

1960 OLDSMOBILE HOLIDAY COUPE

Sparkling metallic blue finish, matching interior trim, hydramatic, power steering, brakes and windows, factory air conditioning. Exceptional buy.

\$2395

1960 CHEVROLET IMPALA SPORT SEDAN

Light turquoise finish, matching interior. Power steering, radio, heater, whitewalls. Local one owner car with only 17,000 actual miles. Like brand new.

\$2095

1960 PONTIAC BONNEVILLE

Sport Sedan. Stunning Honduras finish, matching leatherette interior, hydramatic, power steering, brakes and windows, radio, heater. Premium nylon whitewall tires. Local one owner car. Only 17,000 actual miles. A steal!

\$2895

1958 PLYMOUTH BELVEDERE HARDTOP

4-Door sedan. Powder blue, matching interior. Original inside and out. A real cream puff.

\$995

1960 CHEVROLET IMPALA CONVERTIBLE

Gleaming polar white finish with red interior. Automatic, power steering, radio, heater, whitewalls. Brand new white custom top. Too new to be called used.

\$2095

1959 FORD HARDTOP SEDAN

Galaxie model. Arctic white, contrasting interior. Cruiseomatic, power steering and brakes, radio, heater, whitewalls, air conditioning. A nice car.

\$1595

1960 PONTIAC VENTURA HARDTOP

Sport Coupe. Hydramatic, power steering and brakes, radio, heater, whitewalls. Full leatherette interior. Completely original inside and out. Like new condition.

\$2695

1957 PONTIAC HARDTOP SEDAN

Star Chief. Sparkling white finish, full leatherette interior, hydramatic, radio, heater, whitewalls. Real nice car.

\$1895

1960 PONTIAC CONVERTIBLE

Jet black finish, matching top. Hydramatic, power steering and brakes, radio, heater, whitewalls, leather bucket seats. A flawless car.

\$2495

1962 PONTIAC BONNEVILLE

Sport coupe. Silver blue finish, matching interior, loaded with extras including premium nylon whitewall tires. A Scott Robinson executive car.

\$3495

Every Used Car Carries Our Free 12 Months or 12,000-Mile Warranty--Get Your Share of Savings at Scott Robinson Pontiac Today

20340 Hawthorne Blvd.

New Car Dept.—FR 1-3521

YOUR SOUTH BAY PONTIAC DEALER

OPEN SUNDAYS

Used Car Dept.—FR 1-3525

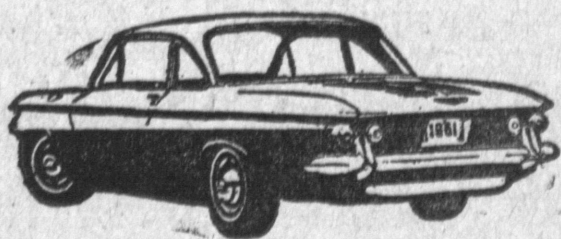


Now Is Your Opportunity To Make a Good Car Buy

FALL ROUND-UP OF BARGAIN BUYS

Brand New Cars or Guaranteed Used Cars

BE A HAPPY DRIVER . . . CHECK THESE BARGAIN CAR BUYS TODAY



All '62 Models Must Be Sold
SAVE \$ \$ \$

GLEDHILL CHEVROLET

304 East Anaheim — Wilmington
 TE 4-3491—Open Evenings and Sunday

COMETS - MONTEREYS METEORS - CONTINENTALS

CLOSE OUT SALE
 Save Up to \$1200

— On Some Models

CABRILLO MOTORS

1850 S. Pacific Ave. — San Pedro
 TE 3-3577 — Open Eves. and Sun.



NEW PONTIAC-TEMPEST

Trade-Ins at
LOW, LOW PRICES

FRANK REIMAN

PONTIAC CENTER
 412 West Anaheim — Wilmington
 Open Evenings and Sundays

NEW 1962

VALIANT

\$1742⁷⁹

Plus Tax, License and Freight

CARL'S MOTORS

1200 N. Avalon — Wilmington
 TE 5-3131 — Open Eves. 'Til 9 p.m.

BIG

NEW AND USED CAR SALE

NOW IN PROGRESS

VEL'S FORD

1600 Cabrillo Ave.

Torrance

FA 8-5014

PUBLIC NOTICE

Balances Are Owning on These Cars We Must Dispose of Immediately.

'56 CHEVROLET HARDTOP

(Lic. KJY 315)
 Take over with \$32 cash, just pay \$7.32 per week with no other cash and assume an unpaid balance.

'61 FALCON SEDAN

(Lic. VVN 728)
 Take over with \$41 cash, just pay \$7.32 per week with no other cash and assume an unpaid balance.

'56 OLDSMOBILE HARDTOP

(Lic. LDW 935)
 Take over with \$34 cash, just pay \$7.32 per week with no other cash and assume an unpaid balance.

'56 FORD 9-PASSENGER WAGON

(Lic. GBT 143)
 Take over with \$28 cash, just pay \$7.32 per week if with no other cash and assume an unpaid balance.

'60 CORVAIR SEDAN

(Lic. TEC 179)
 Take over with \$34 cash, just pay \$7.32 per week with no other cash and assume an unpaid balance.

CALL CREDIT MGR., SP 5-3082



RAMBLERS—WE HAVE 'EM

'59, '60 and '61 Sedans and Wagons

Low as **\$895** Full Price

HUNT RAMBLER SALES

402-500 West Anaheim — Wilmington
 TE 5-6646—TE 4-6383
 Open Evenings and Sunday

AL ORTALE RAMBLER

WILL ALLOW

\$300 . . . Yes . . . **\$300**

FOR ANY JALOPY ON A NEW

'62 RAMBLER

IN OUR STOCK NOW

\$250 IF YOU TOW IT IN

LONG-LOW BANK RATES

AL ORTALE RAMBLER

1885 TORRANCE BLVD.
 20611 HAWTHORNE BLVD.

FA 8-9222
 FR 1-1244

First With The Most—Torrance Press DA 5-1515