



FAMED ARTIST Leo Polti shows illustration from his latest book, "All Things Bright and Beautiful." Polti will be a featured speaker at dedication ceremonies for Walteria Library in Torrance.

### Famed Artist to Dedicate New Library in Walteria

(Continued from Page One) branch, named for the first Torrance librarian and dedicated in July, was built to provide service in the fast-growing Victor Park area. In contrast the Walteria structure provides new quarters for an old institution. It is the fifth location for the library since it was first opened in 1937. The same librarian, Mrs. Dowd, has been in charge for 25 years. The present site in Walteria Park was also the location of the third library building. While the old building was being torn down and the new one built, the library has been open for service in a converted fire station one block east of the park. City librarian Harold Umbarger has announced service will be discontinued at the old location at 9 p.m. Monday to resume in the new location at 1:30 p.m. Oct. 6 following the dedication ceremonies. Beginning Monday, Oct. 8 the library will be open from one to five p.m. on Monday, Tuesday, Wednesday and Friday, and from 10 a.m. to 6 p.m. Saturday, closed Thursday and Sunday.

### Child Rearing, Family Living Topic of PTA Lecture Series

Interested parents of more so she might further enrich her teaching she spent the summer in preparation for her fall teaching. She will bring reports of recent research in child development and family relations. Meetings will be held in the auditorium of 232nd Place School, 23240 Archibald Ave., in Wilmington, beginning at 7:30 p.m. Parings from this or any other school are welcome. Further information regarding this class and other classes for adults may be obtained by calling TE 4-2343 between 1 and 9:30 p.m. each school day.

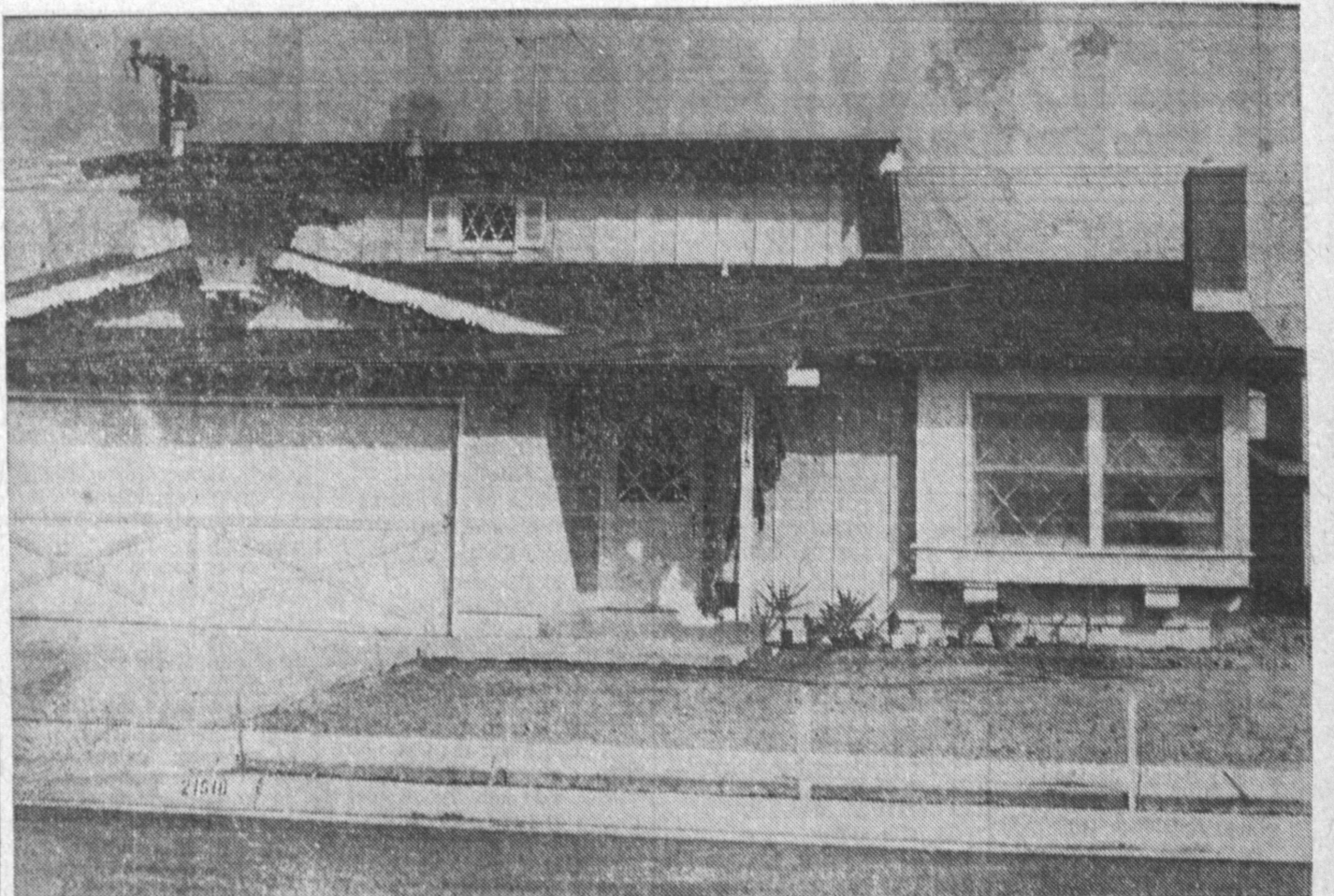
### Forum Series Announced At Banning Adult School

"Youth—Resource of the Future" is the theme for a series of five forum sessions of the Parent Forum sponsored by Banning Adult School and cooperating community organizations for the 1962 season. Meetings will be held in the teachers' cafeteria of Banning High School, 1500 Avalon Blvd. in Wilmington on five successive Monday evenings, beginning Oct. 8 at 7:30 p.m. Persons attending the forum sessions may enter schoolgrounds through the driveway at the north end of the main building and in the lighted parking area near the athletic field, entering the building through the lower (basement) north door. The theme will be developed around five major topics on the five successive Monday evenings, and will be presented in the following order: Development of Youth Resources; The Home as the Foundation of Educational Development of Youth Resources; The Community—Social Foundation of Youth Resources; Delinquency and Maladjustment—Failures in Development of Youth Resources; and Moral and Ethical Foundations for Development of Youth Resources. The forum committee has obtained Charles Eugene Mallory, clinical psychologist, Los Angeles Psychiatric Clinic, as forum speaker. As a clinical psychologist, Mallory works with children (and their parents) who are wards of the court, assigned to Juvenile Hall in Los Angeles, and those assigned to MacLaren Hall in El Monte, the home for non-delinquent children who are wards of the court.

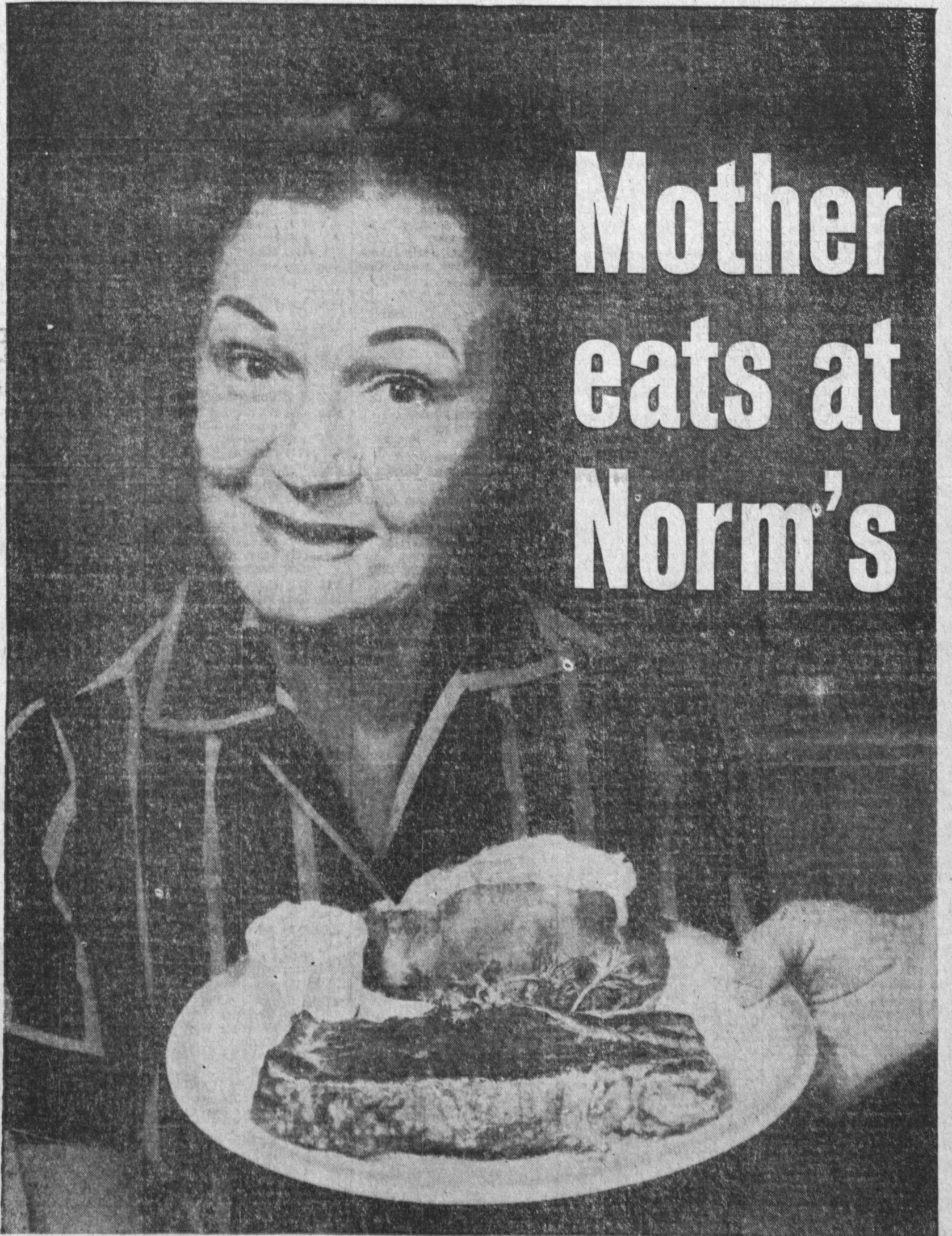
### Bruinsma Blasts Opposition, Hits 'Worst Representation'

Stepping up the pace of his campaign, Ted Bruinsma, local candidate for Congress, lashed out at his opponent as offering "Probably the worst representation any district could have." Speaking at a meeting of Democrats for Bruinsma in North Torrance, Bruinsma stated "it is inconceivable that any person could vote to return this man to Washington after the way he has neglected and mistreated them during the past five or six years. When you consider it costs over \$100,000 to support a Congressman in Washington, I'd say the people in this district are being cheated. "Here is a man who never lets his views be known on any issue—local or national, who votes consistently to take away individual rights and replace them with big government, who doesn't even bother to come home to the district when Congress is out. Since he spends his recesses on the east coast or abroad, it is questionable whether Inglewood is still his legal residence. "I don't believe any voter is so committed that he will vote the straight party line by habit if he knows the facts. This has been proven day after day as we meet new people in our person-to-person, door-to-door campaign. "Our job and your job is to help me bring the facts to the voters—they will do the rest. Regardless of how many people look down upon average voters, I know they want good representation and will vote for the man if they realize he will give them honest representation."

**REMEDIAL READING**  
A class in Remedial Reading will be offered on Tuesday and Thursday evenings at the Gardena Adult School. The class will meet from 7 to 9:30 p.m. Registration for this class is now possible at Gardena Adult School office, 182nd at Normandie Ave. 1 to 10 p.m. Use classified. DA 5-1515



LOCAL LUXURY is yours in a beautiful two-story home at Midway Manor, between Main and Carson Blvd., one block north of Carson on Delores. Grand opening of Midway Manor and its home with contemporary and ranch exteriors just began this week. Homes ranging from \$19,950 to \$23,250 can be seen by contacting John R. Day Jr., sales agent, at TE 4-2842.



# Mother eats at Norm's

## \*Complete New York Steak Dinner \$1.25

Mother starts with tomato or pineapple-grapefruit juice... or a steaming bowl of the chef's own soup... she likes Norm's creamy imported bleu cheese dressing on her mixed green salad... 1000 Island and French are available too. Now—a tasty tender New York steak... grilled to order and served with baked in foil, French fried or hashed browned potatoes and oven-fresh rolls and butter to mop up the juice! Delicious! Now a cup of Norm's famous coffee... tea or milk. Some dinner! No wonder Mother eats at Norm's... \$1.25 complete on \*MONDAY NIGHT ONLY, 3 P.M. to 3 A.M. You're invited and bring the whole family too!

\$1.25 SPECIAL—MONDAY NIGHT ONLY 3 P. M TO 3 A. M.

# Norm's on Crenshaw at El Segundo

## -CARPET CITY-

SALE ONLY FOR A WEEK, ENDING SEPT. 16

All NYLON Face

3

SQ. YD. A 6.45 VALUE

Virgin WOOL Face

3

SQ. YD. A 6.45 VALUE

**COMPLETELY INSTALLED OVER PADDING**

9x12 Rayon Tweed Pile Pads on Back With Foam	Room Size Remnants	ALL CANDY STRIPE CARPET REDUCED 30%	501 Continuous Filament Nylon 4.95 Reg. 7.95	Wilton and Axminster Carpet REDUCED 30%	9x12 Braided Rugs 24.95
<b>RUGS 19.95</b>	<b>50% OFF</b>				

PHONE COLLECT FOR FREE ESTIMATES

Los Angeles AX 5-5461 5861 S. Western Near Slauson Ave.	Anaheim 709 East Center Continuation of Lincoln Ave. PR 2-7320	San Diego CY 7-1631 610 West Washington Mission Hills Area	West Covina 636 So. Sunset 1/2 Block East of City Hall YO 2-3574	Long Beach HE 7-2737 1170 East Anaheim
---	--	--	--	--

OPEN DAILY 9-9, SATURDAY 9-6, SUNDAY, 12-6