

Meet the New Champ!

FARMER BOYS

CARSON & FIGUEROA

Produce and Grocery Department

Open 24 Hours a Day — We Never Close!

Specials Effective Thursday, July 19, Through Sunday, July 22

Meat and Delicatessen Department

Open Daily 9 to 9 — Friday Nights 'Til 10

Specials Effective Thursday, July 19, Thru Wednesday, July 25



FRESH BEEF LIVER **29^c lb**

FARMER JOHN'S **SMOKED PICNICS**

Avg. 4 to 6 lbs.

29^c lb

TONGUES

FRESH BEEF

29^c lb



FRYERS

Young, Tender, Delicious ...

Just Right to Fry or BARBECUE

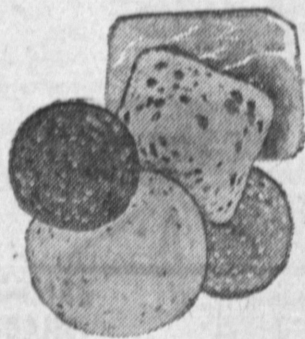
Whole Body **29^c lb**

Cut-Up **33^c lb**

All Meat **BOLOGNA**

FRESH SLICED

3 -lb. Cello Pkg. **\$1⁰⁰**



SLICED BACON Breakfast Special

39c lb or **3⁹⁹ lb**

Packaged by Yorkshire

ASSORTED COLD CUTS

Fresh Slices and Ends

5 -lb. Cello Pkg. **99^c**

SPARERIBS

Eastern Grain-Fed **39^c lb**

CHEDDAR CHEESE Natural Aged Wisconsin

Sharp or Mild **59^c lb**

MONTEREY JACK CHEESE

Smooth and Creamy **49^c lb**

FRESH **GROUND BEEF**

39c lb. or

3⁹⁹ lb

Tender Yearling

LEG-O-LAMB

39^c lb

GROUND CHUCK

FRESH! EXTRA LEAN!

49c LB. OR

3¹²⁹ lb

HOT DOGS

3 Lb. Cello Pkg. **99^c**

FANCY STEER BEEF **STEAK SALE!**

Chuck Steak **59^c lb**
Marinate—Then Bar-B-Q

Swiss Steak **59^c lb**
Simmer with Herbs

Round Steak **79^c lb**
Always Delicious!

Porterhouse **98^c lb**
Includes Filet! He-man size

Club Steak **89^c lb**
Superlative flavor! Steer beef

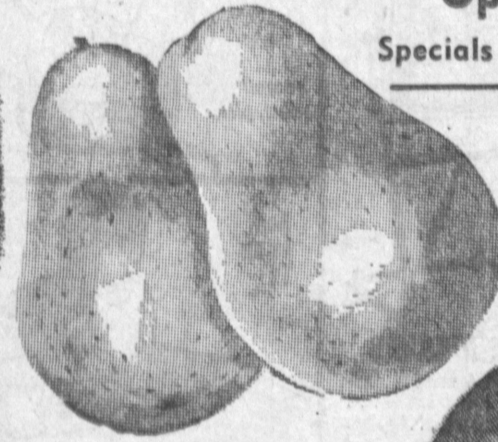
Sirloin Tip **98^c lb**
Best broiling yet! Steer beef

Boneless Cube **89^c lb**
All taste—no waste

Rib Steak **69^c lb**
Small cost, big taste

T-Bone Steak **98^c lb**
All-American favorite

New York **\$1¹⁹ lb.**
Treat you can't beat



Solid Ripe

Tomatoes

7^c lb

FARM-FRESH! FARM PRICED!



SWEET, RED

Watermelons

19^c ea.



CUCUMBERS

LONG, GREEN CRISP

1^c ea.

NEW CROP **PINTO BEANS**

7^c lb

INSTANT COFFEE

SMART & FINAL

6-oz. Jar

49^c

STRAWBERRY JAM

KOPPER KETTLE—

43-oz. Jar

59^c

LIMA BEANS

Orchard Garden—
No. 303 Size
Cans

8^F \$1⁰⁰ ^{OR}

KIDNEY BEANS

Santa Maria—
No. 303
Cans

14^F \$1⁰⁰ ^{OR}

RIPE OLIVES

El Paseo—
No. 303 Size
Cans

7^F \$1⁰⁰ ^{OR}

PORK & BEANS

Hunt's—
51-oz.
Cans

3^F \$1⁰⁰ ^{OR}

STEWED TOMATOES

Hunt's—
No. 300 Size
Cans

6^F \$1⁰⁰ ^{OR}

BLACKEYE PEAS

Orchard Garden—
No. 303 Size
Cans

8^F \$1⁰⁰ ^{OR}

SPINACH

Hunt's
No. 300
Cans

10^F \$1⁰⁰ ^{OR}

FLUFF RINSE

Full
Quarts

3^F \$1⁰⁰ ^{OR}