

ews! Low agic Chef

IND THE
ILL BE ...
K, JULY 4th



HEALTH & DIET
INSTANT
TIGER'S MILK
HIGH PROTEIN — VITAMINS —
MINERALS
FOOD FORTIFIER

large
pkg. **\$1.19**

Tiger's Milk is high in natural nutrients but low in calories. You can use Tiger's Milk mixed with ice cold drinks such as, orange, pineapple or apple juice or with half juice half milk, or added to solid foods such as baked items, meat dishes, etc. Only 96 calories gives you modern, wonderful nutrition for modern, wonderful living. Visit Magic Chef's vast Health & Diet Department and select Tiger's Milk and other marvelous health foods today!



AC REGULAR OR PINK

**ROZEN
MONADE**



ARROW
• **CHARCOAL
BRIQUETS**
10 lb. bag 59¢

are best with mustard. (Inc. 1.2c off) 24-oz. jar
SE MUSTARD 27¢
dy to serve for salads, or plain. 15-oz. jar
KE WAFERS 25¢
sun ripe! Firm, meaty & delicious. Tall can
PE OLIVES 25¢
re a real treat roasted or just plain. 1-lb. pkg.
LLAWS 29¢

FOR COOKING OR FREEZING
KAISER ALUMINUM FOIL
25-ft. roll **29¢**

DELICIOUS — FROZEN
RICH'S WHIP TOPPING
10-oz. can **39¢**

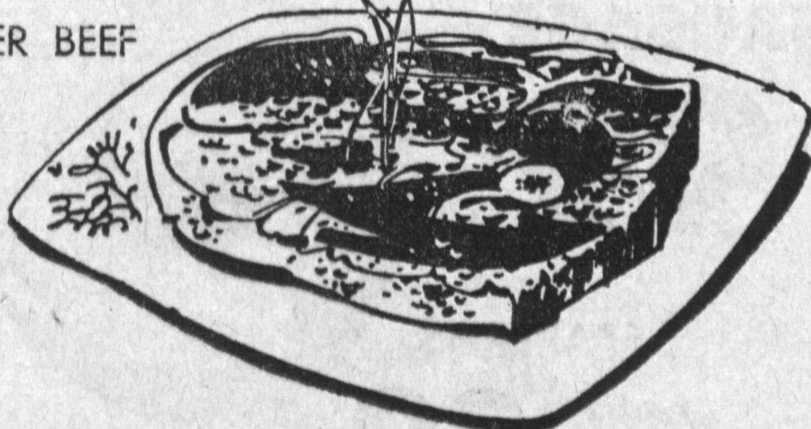


'N TENDER
the COB

O. 1 WHITE ROSE
TATOLIS
pounds **39¢**

U.S.D.A. "CHOICE" STEER BEEF

**SWISS
STEAK**
69¢ lb.



A PERFECTLY DELIGHTFUL TREAT — U.S.D.A. "CHOICE" STEER BEEF

FULL CUT ROUND STEAK 79¢ lb.

U.S.D.A. "CHOICE" STEER BEEF

**RUMP
ROAST**
bone-in **79¢ lb.**

U.S.D.A. "CHOICE" STEER BEEF

**BONELESS ROUND OR
RUMP ROAST**
89¢ lb.

SELECT YOUR FAVORITE STEAKS — U.S.D.A. "CHOICE" STEER BEEF

CLUB • SIRLOIN TIP • BAR-B-Q STEAK 98¢ lb.

T-BONE STEAK
\$1.19 lb.

PORTERHOUSE
\$1.29 lb.

TOP SIRLOIN
boneless **\$1.49 lb.**



FRESH GROUND HOURLY
GROUND ROUND
69¢ lb.

FARMER JOHN
SLICED BACON
1-lb. pkg. **59¢**

GORTON'S — FROZEN
SCALLOPS
7-oz. pkg. **49¢**

GORTON'S — FROZEN
BREADED SHRIMP
8-oz. pkg. **59¢**

COLGATE TOOTHPASTE
with GARDOL

Regular 69¢ Economy
Size — Includes 10c
Off Label... Only

49¢



A FLAVOR TO BE REMEMBERED
**SHEPHERD'S
BREAD**

reg. 39¢ **29¢** loaf

ORANGE TIFFIN
COFFEE CAKE 59¢ ea.

CHERRY PIE 59¢ ea.

HOMEMADE SALADS

POTATO • MACARONI • BEET
BEAN • COLE SLAW
reg. 39¢ pint size **29¢**

RUBEN'S
ALL BEEF SALAMI
69¢ lb.

DEL AMO
SHOPPING
CENTER
CORNER OF
HAWTHORNE &
SEPULVEDA

**MAGIC
CHEF**



Women Police Officers Aid Las Palmas School

The Los Angeles County Women's Peace Officers Association interested in the prevention and treatment of delinquency, has undertaken as their first major project, providing a swimming pool for Las Palmas School.

A "Kick Off" luncheon will begin the fund raising drive Friday on the school grounds.

Justice Mildred Lillie of the District Court of Appeal and Judge Fred Miller of Superior Court will be legal advisors for the campaign, and overall chairman is Officer Maxine Hahn of the Torrance Police Department, the Women Peace Officers' first vice president.

Las Palmas School is the only facility of its kind in Los Angeles County, a school for badly disturbed, delinquent girls that have come to the attention of law enforcement.

It has replaced El Retiro School, a similar institution that was abandoned because of its age and condition.

The youngsters, between 13 and 17 years old, who are confined to the school are "extremely troubled children," according to Mrs. Dorothy Kirby, the Las Palmas director.

Because of their emotional problems, Mrs. Kirby considers a pool a therapeutic device rather than a purely recreational facility. El Retiro had a pool, she points out, which unfortunately couldn't be moved to the new facility.

Las Palmas can accommodate only 99 girls, because if it is to succeed in helping its charges, the ratio of staff members to students must be high.

Only girls with an IQ of 84 or above (that's nearly not too far below average) are admitted, because, with a waiting list, the school must be selective. It takes only those it believes it can help.

Mrs. Hahn, in explaining the women peace officer's interest in building a pool, said she hopes every community in Los Angeles County will have a part in the project, since Las Palmas cares for girls from every area of the county.

She believes the fact that law enforcement women are sponsoring the drive will make it clear to the public the importance of the pool as a therapeutic device.

Its expected cost will be announced before the committee group at the Friday luncheon.

Congratulating the peace officers on their choice of a project, Mrs. Kirby said:

"At Las Palmas, we are working with deeply troubled adolescent girls. They tend to be tense, nervous, motoric, hostile and often aggressive. A swimming pool is seen as a highly therapeutic treatment tool in working with these youngsters. "Swimming is a very relaxing activity. It serves to tire them so that they can rest and sleep."

"For some, when they learn to swim, it marks their first experience in successful achievement and, therefore, is highly meaningful. Swimming is an excellent disciplinary tool, too, because it teaches the girls to follow directions and exert self control."

Donations to the Las Palmas Swimming Pool Fund can be made to, Maxine Hahn, Policewoman, Torrance Police Department, 3131 Torrance Blvd., Torrance, Calif.

'Dateline '62' For Journalism Students Friday

"Dateline '62," the first reunion in the 15-year history of El Camino College for former students of journalism, will be staged Friday, June 29.

Setting for the semi-formal dinner-dance will be the Redondo Beach Elks Club, 315 Esplanade, Redondo Beach.

Social hour will begin the evening at 7 p.m. with a choice dinner of swordfish or New York steak to be served at 7:30 p.m.

College journalism instructors, former students and their guests have been invited.

Master of ceremonies will be W. A. Kamrath, coordinator of public relations at El Camino College and adviser to the college newspaper.

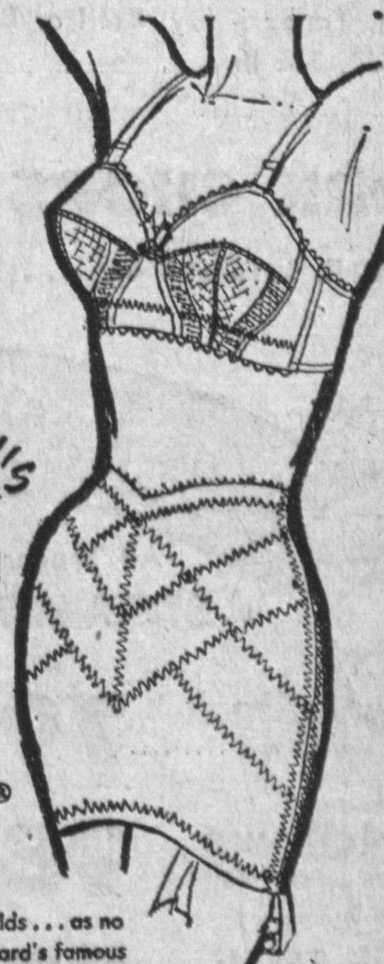
Dancing will conclude the program.

FIRST EXPORT

First product shipped from the New World to England was clapboards made in Virginia from pine. Today most of the 40 billion feet of lumber cut in this country are needed to build new homes, schools and churches as well as farm structures for a growing nation.

IT'S
HERE!

Gossard's
guaranteed
answer
in
LYCRA®



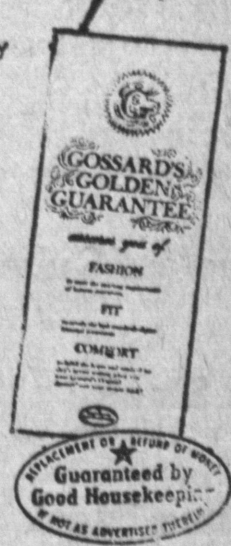
Holds... holds... holds... as no other girdle can. Gossard's famous inner band design—now fashioned with Lycra power net—is so incredibly strong it will give you the same astonishing support months from the first day you put it on.

White, sizes 24 to 34 **13.50**

Answer-bra with five-section cup adapts to individual figure changes. Cotton and Dacron polyester with Lycra® inserts that assure "no bind" comfort. White A 32-36, B and C 32-40

Phylon, rayon and Lycra Spandex **2.50**

A written guarantee comes with Answer. Wear it 10 days—be satisfied—or we will refund your money.



Sam Levy Department Store

Since 1910

1311 Sartori Avenue

Torrance