

Parents Aided by Health Department in Choosing Children's Camp

Summer vacation will soon be here, and many eager youngsters are already planning to spend a week or more in a children's camp. Altogether there are some 60 such organized camps in Los Angeles County, and part of the fun is choosing the one that seems to be most suitable. It is a good idea for parents to get in touch with the proper agency early in the season, since the number of children that want to go to camp is generally more than can be accommodated.

Many camps are surprisingly inexpensive, the average cost being in the neighborhood of \$35 per week. Moreover, a number of "camperships" are available which are provided by church, civic, and youth groups and the like, and these enable a child to attend camp without cost to parents.

A small number of special camps are available for children with physical or emotional handicaps, and these include camps for blind or diabetic youngsters. Some of these camps charge a weekly rate, others are free or the fees are set according to the parents' ability to pay.

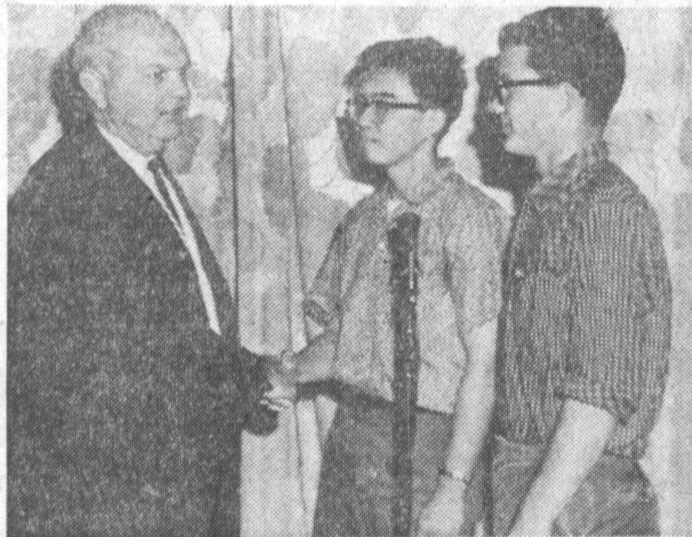
All of these youngsters are closely supervised, and necessary medical attention is provided.

DELUXE

A few of the camps are "de luxe." These facilities are privately operated for those children whose parents can afford the cost, which may run from \$600 to \$800 for a 10 week period.

All children's camps are inspected by sanitarians from the local health department, for, on a small scale, camps have all the sanitation problems of a small community. Most of the camps in Los Angeles County are inspected by the sanitarians of the Mountain and Rural Section of the Los Angeles County Health Department, and sanitary supervision of these camps forms an important part of their duties.

Parents can be assured that their children will receive safe food served on clean dishes, that they will be supplied with safe drinking water, that swimming pools and swimming areas will be regularly inspected and the water sampled for bacteriological content, and that all camp waste will be disposed of properly. In short, the camp environment



CONGRATULATIONS — B. J. Donohue, principal of Banning High School, here congratulates Yukio Kahuda for his first place effort in Banning's annual History Bee. Winner is flanked by Bill Cantrell, runner-up.

will be free of health hazards.

Starting this year, camp operators must also notify the local health officer of the city or county wherein the camp is located of the proposed camp occupancy for the current calendar year. This must be done at least 30 days prior to the opening of the camp, so that time is allowed for inspection of the facilities and for the making of any improvements that may be required.

Approval of camp permits by the local health department is needed before camps are permitted to open. Each camp must also have a business license, which may be obtained from the office of the Los Angeles County Tax Collector, Room 111, Hall of Administration, 500 West Temple Street, Los Angeles 12.

Information on all camps in Los Angeles County is to be found in a small publication called "The Directory of Camps Serving Southern California" which may be obtained without charge from the Camp Bureau of the Welfare Planning Council, 733 1/2 S. Hope

Torrance Youth Graduates From Culver Academy

Richard T. Trimble of Torrance graduated at the 68th annual commencement exercises of Culver Military Academy yesterday.

He is the son of Lt. Col. and Mrs. Harry W. Trimble, 1304 Cranbrook Dr.

Youth attended Culver four years and was active in intramural football, rifle, crew, baseball, and volleyball.

Culver is a college preparatory for 850 boys in grades eight through 12. There are 192 candidates for graduation June 5.

St. Los Angeles 17 (Madison 1-1231). Copies are usually available for consultation in libraries and chambers of commerce, but a personal copy is preferable since a great deal of information on the requirements of the various camps and on available "camperships" is included.

Youngsters generally find their experience at a children's camp wholly delightful. It is a splendid opportunity for a safe and pleasant vacation that should not be missed.

TERRIFIC BUYS NOW
WINDOW & DOOR SCREENS

SCREEN DOOR SPECIALS:

All Include Air Closure and Locking Latch

11/16 x 2 x .032 Gauge with Diamond Grill. **\$10⁸⁸**
This is the door other ads call a "\$21.95 value." We just say:
OUR PRICE IS.....

3/4 x 2 1/4 x .040 Gauge. Roll form anodized. **\$15⁸⁸**
8 1/2-inch kick-plate.
COMPLETE.....

3/4 x 2 x .050 gauge. Extruded... anodized. **\$19⁸⁸**
11-inch kick-plate.
COMPLETE.....

1 x 2 1/2 x .062 Gauge. Extruded... anodized. **\$28⁸⁸**
14-inch kick-plate.
THIS IS TOPS.....

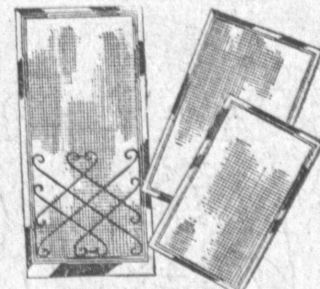
EXTRAS FOR DOORS

ALUMINUM GRILLS 49c up	ANODIZED GRILLS \$2.75 up	SPECIAL SIZE DOORS \$1.50 up
---------------------------	------------------------------	---------------------------------

TORRANCE SCREEN AND GLASS

Formerly, 2113 Torrance Blvd.

Doors • Windows • Louvers • Rescreening • Glazing • Mirrors



WINDOW SCREENS

Full Aluminum Frame
1/2 x 3/4 x .025

• Baked Enamel Finish
• Choice of Colors
This frame will resist sea-coast atmospheres.
We measure each window four ways and make each screen to fit. Satisfaction guaranteed!

Call for Free Estimate

Average cost for entire home, installed..... **\$60**

MAYFLOWER DRESS SHOP

The one and only object of this sale is the Final, Definite and Complete Disposal of this Entire Stock, and Fixtures... In the Shortest Possible Time.

After careful thought and serious deliberation and taking into consideration THE GREAT LOSS THAT MAY HAVE TO BE INCURRED in Closing Out and Winding up this business,

we have decided there is only one logical, sensible thing to do. Place the Entire Stock on Sale... To the people of this community... At EXTREMELY DRASTIC PRICE REDUCTIONS... At prices so low, the stock should Sell and Sell QUICKLY... Let the merchandise bring what it will and the loss be what it may.

LADIES' Dresses

A large group from our regular stock priced at ridiculous low prices! Square dance styles included! Sizes 8-10. Reg. 5.99. WE QUIT!

\$1⁵⁹

Ladies' Summer Blouses

Assorted styles and colors... 100% cotton... washable... Values to 2.99.

88c

LADIES' BETTER BLOUSES

Roll-up sleeves... assorted prints and solids, too. Sizes 32-38... Values to 3.99.

\$1⁵⁹ 2 FOR \$3⁰⁰

LADIES' CORD CAPRIS

Continental styling... black only... Sizes 8 to 14. Regularly 1.99. WE QUIT!

99c

LADIES' CAPRI SETS

From famous Calif. manufacturer. The latest styles and colors. Values to 6.99. From...

\$4.50

LADIES' JAMAICA SETS

Choose from assortment of prints and colors. They're all fine, washable cotton. Sizes 8-18.

\$4.95 Value \$1.99

FUR BLEND SWEATERS

The most sought-after styles and colors... Full fashioned. Sizes 34-40—Reg. 9.99. Save 50%—WE QUIT!

\$4.88

SWIM SUITS

Nationally advertised. Choose from the latest styles and colors—A full run of sizes—We can't mention the name.

Values to 19.95 **\$3.29**

WE QUIT.....

100% CASHMERE COATS

Elegant luxury cashmere coats at this fantastic quitting business price. Good selection of styles and colors. Beautifully hand detailed.

Regular **\$85. Save Over 50% \$33.88**

Orlon & Banlon Ladies' Sweaters

Marvelously care-free cardigans and slip-over styles. In the latest spring shades... Values to 4.99. WE QUIT!

\$1.88

SUMMER DRESSES

Cool and care-free sun-seeking cottons in prints and solids with whirly skirts and sheaths. Sunback and spaghetti straps. Values to 10.99.

From **\$3.99**

COTTON SUMMER SKIRTS

Just right for warm days ahead. Assorted styles and colors. Values to 5.99... **\$2.99**

100% WOOL SKIRTS

Special group of slim-line with seat lining. Assorted styles and colors. Sizes 8-18. Reg. 6.99. **\$3.00**

LADIES' SHORTS

100% cotton. American made. Assorted colors. Regular 1.99—WE QUIT! **88c**

LADIES' MUU-MUUS

Beautiful new prints in the most wanted colors. 100% drip dry cotton. You'll want several at this price. Regularly 2.99. WE QUIT! **1.59**

SPRING WOOL TOPPERS

All wools, some laminated, novelty fabrics... Spring lightweights. All Sizes. Come and get 'em. Values to 29.95. FROM **\$6.88**

100% NYLON HALF SLIPS

Trimmed with lace... styled with an elastic waist... white and pastels... Sizes S-M-L. Reg. 1.99—WE QUIT. **77c**

BETTER DRESSES

Large group of better dresses in cotton, silks, and novelty fabrics. Assorted styles... All nationally advertised... You'll recognize the label. Values to 39.95. Sizes 5-15, 8-20 and 14-16. 24 1/2 WE QUIT!

From **\$8.00**

TERRY BEACH ROBES

And Muu-Muus. Perfect for pool or beach—assorted styles and colors. Values to 10.99. **\$3.97**

100% WOOL CAPRIS

In the latest spring shades—Waist band and high rise styles. Reg. 5.99. **\$2.99**

SKIRT AND BLOUSE SETS

Nationally advertised names... some with full skirts... Sizes 8-16. Vals. to 10.99. **\$3.59**

LADIES' WOOL COATS

This is sensational! Don't stop for anything. Be here when the doors open. Full length custom coats. Fully lined, at this unheard of price. One Group Val. to 39.95. SALE PRICE **\$10.00**

Children's Skirts, Shorts, Blouses, Bermuda Shorts

A colorful assortment of current styles. Reg. 1.99—Broken sizes. **77c**

3-PC. P.J. AND ROBE SETS

100% cotton. Guaranteed washable. Regular 8.99. WE QUIT! **\$4.99**

LADIES' SUITS

Lovely suits in a wide variety of fabrics, colors and styles. Some 3-piece. Values to 29.95. Sizes 8-16. Priced from **\$4.49**

GIRLS' SWIM SUITS

\$1.88 Values to 3.99

Nationally Advertised

Silk-Skin Bras and Girdles

UP TO **20% OFF**

Mayflower Dress Shop

ALL SALES FINAL!

1323 El Prado
(Next to McCown's)
Downtown Torrance

