

TORRANCE PRESS

EDITORIAL PAGE

W. R. ZAPPAS, Publisher

W. E. EDMOND, Managing Editor

City Owes Debt to Watchful Attorney

The city of Torrance owes a debt of gratitude to an alert local attorney who first spotted the obvious errors in tallying one precinct in the recent municipal elections.

David K. Lyman, a defeated candidate for city council in the election, forced the issue to recount of the precinct's ballots even though he knew that it would not possibly effect his chances.

This single-minded belief in the integrity of our institutions and determination to root out any planned or inadvertent errors in our procedures is a vital and necessary thing in a progressive community.

INNOVATIONS

Recount of ballots in the suspect precinct has led to several necessary innovations in our election procedure.

Noting that the tally of votes was off by some 65 percent, City Clerk Vernon Coil has stated that he will institute classes for election board personnel, which will demonstrate graphically the correct procedure to follow.

It means, too, that in elections to follow Torrance citizens will keep a critical eye on the results from each precinct.

The right to vote, and have your vote counted, belongs to every citizen.

As long as young men like Dave Lyman are around to keep a wary eye on these procedures, our rights will be protected.

Supervisor Leads Fight To Trim County's Budget

Supervisor Kenneth Hahn, who is leading a concentrated effort by Board of Supervisors to trim the huge \$781 million preliminary county budget and hold the tax rate despite increased costs and government spending.

Hahn's motion that the Chief Administrative Officer reevaluate his request for 2,043 new employees included in the 1962-63 budget and eliminate 500 of those positions gained instant and unanimous support from the board.

The move is designed to save approximately \$2,500,000.

In presenting the motion, Hahn pointed out that although the population of the County of Los Angeles has increased only 49.97 percent since 1951, the number of county employees has increased 68.71 per cent and the budget has increased 143.30 per cent.

"We have added an average of 1,500 new employees a year," Supervisor Hahn said. "I can see no reason why we should not hold that average this year, especially since we face an added tax burden of 12 cents per \$100 assessed valuation if the preliminary budget is adopted."

Hahn's stand was immediately supported by his colleagues on the board.

Supervisor Burton Chace stressed that the request for new employees should be granted only in areas which affect the safety and health of the citizens. He suggested that possibly as many as 1,000 of the request-

ed 2,043 new positions might be eliminated.

Supervisor Frank Bonelli also favored trying to cut the employee request in half, and emphasized that the Board of Supervisors pledged in December, 1961, to hold the tax rate this year.

Supervisor Warren Dorn said that the budget must be trimmed and Hahn's program is a logical step toward that end.

Supervisor Ernest Debs endorsed Hahn's motion and asked the CAO to submit a breakdown of employee requests from each department, giving a solid reason of need for each position.

"By working together and devoting all our time to cutting the budget, the Board of Supervisors can keep its pledge," Supervisor Hahn said.

He emphasized that his suggestion to eliminate some 500 proposed positions in County government would not interfere with the orderly operation of government or limit any essential services.

"Millions of dollars have been spent in the last few years for electronic computing and clerical machines designed to cut the work load of personnel and stop the shocking increase of employees," Hahn said.

"Yet, even with the addition of these costly machines, the requests pour in for still more employees."

"Now it's time to ask all department heads to tighten their belts and demand strict economy in an effort not to

South Bay Jewish Veteran's Post Installs Saturday

Irwin J. Kaplan, senior vice commander, Department of California JWV will install new officers of South Bay Post 777, of which he is life member, on Saturday night at Gable House Bowl private dining room, Hawthorne and Sepulveda Bldgs., with a social hour at 7:30 p.m. and dinner at 8:30 p.m.

New officers are Clarence A. Meyers, commander; Ike Mizrahi, senior vice commander; Howard Friedman, Jr., vice commander; Oscar Lasater, adjutant; Aaron Fischel, quartermaster; Eser Bluestein, judge advocate; and Rabbi Henri E. Front as chaplain.

Reservations can be made by telephoning the chairman, Ike Mizrahi, at FRontier 5-6591.

Also invited is department Commander Steve Rosmarin who will greet the members. Dr. William Nussbaum, member and South Bay Area chairman for the United Jewish Welfare Fund will present the post with a plaque for the work performed and monies raised by its committees.

Two weeks following the installation, June 1, 2 and 3, there will be a JWV department convention held in Monterey at the San Carlos Hotel at which time local member Irwin J. Kaplan will seek the office of Department Commander.

Note Increase in Factory Workers' Weekly Earnings

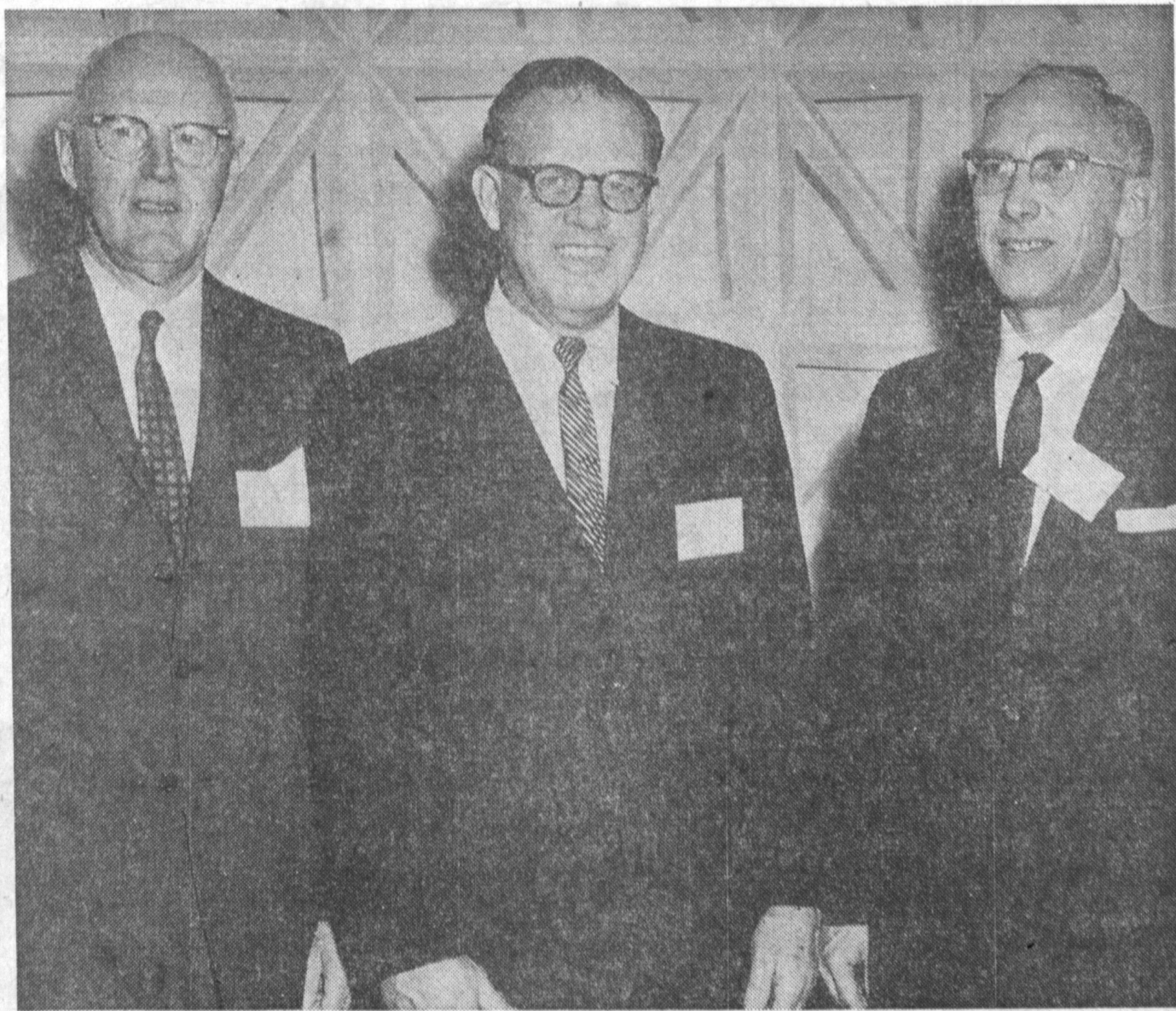
Average weekly earnings of factory workers in the Los Angeles-Long Beach Metropolitan Area rose by 5.4 percent between March 1961 and March 1962, John F. Henning, California Director of Industrial Relations, announced today. Henning noted that after allowing for Federal and State taxes and an increase in consumer prices over the year, the purchasing power of these earnings increased by 3.6 percent.

Grass weekly earnings of manufacturing production workers in the area averaged \$110.43 in March up by \$5.62 per week from March of last year.

Henning said the factory workweek averaged 40.6 hours in March, almost a full hour more than that of the previous March. Increased overtime in primary metals, paper, autos, aircraft, and machinery played a vital role in this over-the-year advance in working time.

Hourly earnings averaged \$2.72, a gain of 1 cent from February and 8 cents or 3.0 percent, from March 1961.

"Add new employees except where vitally necessary," Supervisor Hahn concluded.



VISITING DIGNITARIES — More than 250 guests were on hand last Thursday for the open house at Laboratory for Electronics regional headquarters on Lomita Blvd. When completed facility is expected to cover some 10 acres. Shown above at the opening ceremony are Paul Green, sales manager, Automatic Signal Division; Eugene Stirlen, vice president of L.F.E., Inc., and president of Eastern Industries; and John Barker, president of the Automatic Signal Division.

Top Officials Attend Open House for New Eastern Industries' Regional H. Q.

Over 250 guests and friends of Laboratory for Electronics, Incorporated joined company officers and employees at an open house launching LFE's new Western Regional headquarters in Torrance on Thursday, May 10, 1962. The 20,000 square foot building, fronting a 10 acre tract on West Lomita Blvd., will house the following divisions:

Automatic Signal, Eastern Industries, LFE Electronics, Computer Products and Tracerlab.

In addition to housing the Western Regional Sales Staffs of the various divisions, manufacturing operations will be carried on by the Automatic Signal Division, producers of vehicle actuated traffic control equipment.

James F. Rea district sales manager for Eastern Industries Division will serve as facility manager. Also located there will be W. E. de Young, district sales manager and Robert E. Schmidt, assistant district sales manager, automatic signal; Nelson Praigg, regional sales manager, L.F.E. Electronics; James Buzzell, district sales manager, Computer Products; and Moss Warren, Regional sales manager, Tracerlab.

Upswing Noted In Employment For LA County

The employment uptrend that was evident in the Los Angeles-Long Beach-Orange County area during the first quarter of 1962 continued into April, Irving H. Perluss, Director of Employment, announced today. The number of persons at work in the two-county area increased by 17,100 between March and April to reach 2,843,900. The outstanding development of the period was the establishment of a new record in manufacturing employment. Unemployment fell to a two-year low of 155,000, representing 5.2 percent of the total civilian labor force.

Employment uprends were throughout the economy during the past month. A strong showing in manufacturing, led by electronics and aircraft, raised factory employment to 837,300, compared with the previous high of 832,900 recorded in October 1959. In addition, sizable seasonal gains occurred in the trade, service and construction industries. The current employment total, which included new highs in the finance, service and government groups, as well as in manufacturing, reflected a gain of 111,600 workers from the 2,732,300 reported in April 1961.

Unemployment declined from 179,800 in March to 155,000 in April. The rate from 6.0 to 5.2 percent. By comparison, the unemployed of unemployment dropped last April numbered 203,100, and comprised 6.9 percent of the labor force. The over-the-year decrease in the volume of jobless workers amounted to nearly 24 percent.

Why Pay Rent? Why Maintain a Home?

Have the Freedom of An Apartment Resident and the Benefits of Home Ownership in the New

DEL AMO PACIFIC COOPERATIVE APARTMENT HOMES



To Be Built Under a Share Ownership Plan.

Features include a large, heated pool, individual private patio or sundeck, tropical landscaping, recreation room. Putting greens in adult units or children's play areas in family units.

FULL PRICE OF SHARE from \$475.00 (Includes 10% Selling Cost)

Monthly payments start at \$109.50 and include mortgage equity and interest (5 1/4% loan anticipated), maintenance, gardener and janitor service, pool upkeep, insurance, property taxes, repairs and reserve funds.

LOWER YOUR INCOME TAXES!

Deductions for interest and property taxes, which can be made on income tax returns in the opinion of counsel, reduce the actual monthly cost to the share owner-resident.

\$120 Reserves Any Apartment

Sales Office Open Daily Saturday and Sunday Included 9 a.m. to 9 p.m.

Sovereign Development Co.

3300 Carson Street, Torrance
Call FA 0-3152 or SP 5-2591

Bond Issue on June 5 Ballot to Boost Expansion Plans for Area's LA Schools

Overcrowded junior and senior high school facilities in the harbor and south areas are in line for considerable expansion under projects scheduled in school bond Propositions A and B on the June 5 ballot, according to Superintendent Jack P. Crowther.

A detailed description of school work scheduled for this area's junior and senior highs to be built with funds from the \$128,800,000 school bond issue was reported this week by the superintendent.

"Junior and senior high schools in our system face their greatest crises in many decades as a result of the unprecedented rise in local birth rates and continued migration to this area," Crowther stated.

"Since 1945 when the first crop of World War II babies arrived at our doors, our elementary schools have been filled to overflowing by an ever increasing number of children."

"Elementary school enrollment throughout the south and harbor areas are now

at all-time record highs with schools being forced to accommodate youngsters on half day basis because of the lack of classrooms.

"In a very few years these elementary school youngsters will be overflowing into our local junior and senior high schools and these schools must be prepared to provide for these pupils."

A total of 14 projects are scheduled for the harbor and south areas including one new school, expansion of another site, and 13 additional projects at existing junior and senior high schools.

Main project scheduled for this area is the new South Central City High School, which will be constructed at 325 E. 111th St. Estimated cost for the new plant is \$5,300,000.

LOCAL PROJECTS

The projects which will be constructed in the harbor and south areas are part of the \$60,400,000 which are specifically earmarked for secondary school construction throughout the system. In accordance with state

laws, two separate propositions will be placed on the June 5 ballot. The secondary school portion of the bond program is part of the \$104,800,000 unified district program which will appear on the ballot as Proposition A. This includes all elementary, junior high, and senior high school construction projects. Proposition B for colleges totals \$24,000,000.

A total of 1784 classrooms to house nearly 90,000 students will be built with the School System voters are being asked to approve in Propositions A and B.

"We have carefully weighed the value of every project in this proposal," stated Superintendent Crowther. "All projects which are in the program have met these criteria: absolute need for enrollment growth; continuing mandatory programs controlled by health, fire and safety codes; essential and necessary projects to maintain the educational program at existing schools; and rehabilitation of old buildings based on structural strengthening findings."