



TORRANCE PRESS

EDITORIAL PAGE

W. R. ZAPPAS, Publisher

W. E. EDMOND, Managing Editor

Election's Over... It's Time To Build A Better Torrance

The blazing hot election period is now behind us, the voters of Torrance have selected a mayor, three councilmen, a city clerk and a city treasurer to represent them for the next four years, and it is time to settle down and start building a bigger and better Torrance.

Factional disputes that developed between the supporters of various candidates for city offices should be forgotten, now that the voters have made their choice, and a unified effort should be made to get back to peaceful, constructive procedures.

In the newspaper business there is a meaningful phrase that says, "There's nothing deader than yesterday's news."

This could be paraphrased to say "There's nothing emptier than yesterday's political battles."

VOTES ARE COUNTED

All the points have been won, all the marbles have been picked up, all the candidates that are going to win have

won, and it's time to go back to work.

The hassles that develop in the political arena are a wonderful thing... and pure Americans.

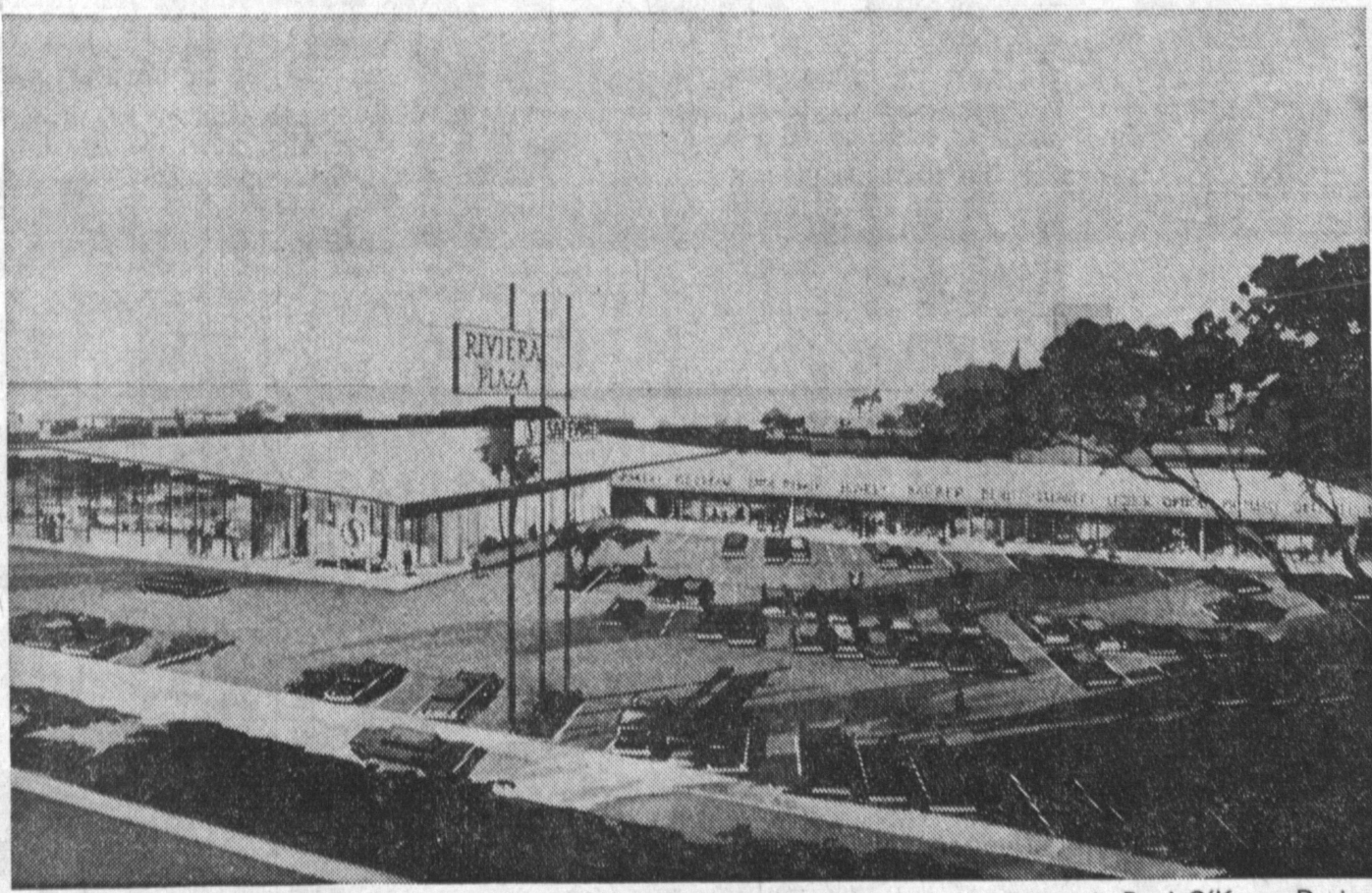
The hard-fought battle, whether on the football field or the political arena is in our best tradition.

The no-holds-barred exposure of a candidate's voting record, character quirks, relationships with other elements in the community, by the opposition is the only method by which the voter can appraise the qualifications of the man for whom he is voting.

Without this time-tested method of showing the qualifications of a candidate the voter, who possibly never met him, would be left to make his choice on pure emotion.

But its all over now. The smoke of battle is clearing away and the final vote count has been tallied.

It's time to get behind the chosen candidates and build a bigger and better city.



RIVIERA PLAZA UNDERWAY — An ultramodern Safeway Store will be the key commercial facility in the new Riviera Plaza Shopping Center now under construction by Ernest W. Kahn, Inc., in Hollywood Riviera.

Developer of the project is Paul O'Kane. Design is by Novikoff Engineers. Completion is set for July of this year.

Groundbreaking Scheduled for Harbor JC Bldg.

Members of the State Board of Education will participate in a groundbreaking ceremony for new buildings at Harbor College when they meet on the Wilmington campus, tomorrow and Friday.

Groundbreaking will be for a new administration building, first unit in a \$2,464,390 construction program. Other buildings to be constructed with money provided for by a 1960 bond election are a business building, life science building, planetarium, student center and service building.

Roy E. Simpson, state superintendent of education, and Dr. Ralph Richardson, president of the Los Angeles City Board of Education will be present at the event.

Construction contract for the new buildings was awarded to C. V. Holder Inc. and Norman C. Toombs Inc. State Board of Education is meeting on the Harbor Campus at the invitation of Benjamin N. Scott, board

New Safeway Store Will Be Basic Unit Of \$1,200,000 Riviera Plaza Center

One of Safeway Stores' most modern supermarkets will be the featured unit in the \$1,200,000 Riviera Plaza Shopping Center now under construction in Hollywood Riviera.

The Safeway will have a unique styling, combining a gabled roof with liberal ceiling height front glass areas and an eight foot portico to present a "residential-style" market which will blend in with surrounding homes.

The 22,500 sq. ft. market structure is the central store in the two acre Riviera Plaza center, which will provide complete one-stop shopping for residents of Hollywood Riviera, Torrance and Redondo Beach.

Located between Palos Verdes Drive North and Pacific Coast Highway, the Plaza will ultimately house 35,000 sq. ft. of modern stores and provide off-street parking for 127 cars.

Paul O'Kane is the developer of the entire project,

which has been designed by Novikoff Engineers. The Safeway is being built by Ernest W. Hahn, Inc., general contractor, with the remainder of the stores to be constructed by the O'Kane Construction Co.

Auxiliary stores will include:

A \$60,000 coin-operated Riviera Laundry & Cleaners which will feature television and hair dryers for

customers; A complete beverage store operated by Paul DeSpain, total cost of which will exceed \$40,000;

Crowning Glory, an ultra-modern, air-conditioned beauty salon; Sansum Barber Shop; and the South Bay Optical prescription house.

Completion of the project is scheduled for July of this year.

Red Cross Volunteers In Last Phase of Drive

Red Cross volunteers, under the direction of Ken Miller, Torrance fund chairman, are putting forth extra effort to wind up the drive in this area.

"We've got a lot of work to do before we adequately meet our share of the support needed if Red Cross is to continue to serve this community," Miller said in announcing that only 50 percent of Torrance's \$11,400 goal has been made.

Although presently trailing the other areas included in the Southern region of the Los Angeles American Red Cross Chapter, Torrance fund leaders feel their final results for the 1962 drive will improve.

Miller says many workers have yet to complete their assignments and turn in their kits. Additional contests must be made to clean up the campaigning among past givers classified as special prospects in the residential and business phases of the drive.

With additional money expected, business drive leaders, Robert Lewellen and Mary and Jackie Pagac report 73 percent of their goal is in.

53 PERCENT

The house-to-house solicitation, under the direction

El Camino Club Wins National Honors for '61

Circle K International, one of whose clubs serves the campus of El Camino College, has been awarded the George Washington Honor Medal for its college campus citizenship program in 1961, it was announced today by Chapter President Rel James.

This is the second consecutive year that Circle K International has been honored by the Freedoms Foundation.

Specifically, Circle K's work in promoting active citizenship by participating in service projects on the campus was singled out for praise by the Freedoms Foundation.

A Freedoms Foundation award enjoys the same prestige and significance in the community service field that the "Oscar" does in the motion picture industry and the "Emmy" of the television world.

Through Circle K International is a relatively new organization—now in its seventh year—it already numbers more than 7,500 members on about 385 college campuses in the United States and Canada. Circle K is the fastest growing service organization on college campuses. Seventy-five new clubs were chartered during 1961.

Circle K is a service club sponsored by a local Kiwanis club which voluntarily assumes the leadership responsibilities in its respective college and host community.

Recreation Dept. Plans Trip to Ramona Pageant

The Theatre Bus of the Torrance Recreation Department will go to the Ramona Pageant on Saturday, April 28. Buses will leave from the Torrance City Hall, 3031 Torrance Blvd., at 10 a.m. On the way, there will be a stop at the park in Homot to eat picnic lunches.

Buses will return about 9 p.m. Reservations for the trip may be made by calling the Torrance Recreation Department FA 8-5310, Ext. 263. The \$5.50 fee which includes the ticket for the pageant (center section), bus fare and trip insurance must be paid by April 20.

"Ramona" is a romantic drama of Old California played in a natural amphitheater with an entire mountainside as a backdrop and stage.

Cast of "Ramona" is made up of 350 amateurs from Homot and San Jacinto, the twin cities at the foot of Mount San Jacinto where the drama has been performed for 35 consecutive years.

A trip to the Ice-Capades is planned for May 10, with two prices in tickets: \$3.75 and \$4.75. Reservations are also being accepted for this trip.

Use Press classified ads to buy, rent or sell. Phone DA 5-1515

TORRANCE SLOW

"While some areas, such as Torrance, are slow in raising their goals, others, such as Palos Verdes, are over the top and still going strong," Miller says.

The Palos Verdes area campaign, under the direction of Mrs. Ernst G. Timmer Jr., has netted \$7,115.65 for 106 percent of its quota.

Miller reminds area residents that Red Cross is financed only by the people themselves, although it is chartered by an act of Congress to carry on a program of services to the armed forces, to provide disaster relief and to help America be prepared for disasters. "It is in reality our own organization, our Red Cross, and what we do about it will give the answer to how well we help America be prepared," he concludes.

TRAFFIC DEATHS

During 1961, some 3,839 persons died in accidents on California highways. Of these, 1,832 were drivers, 1,154 were passengers, 804 were pedestrians and 48 were bicyclists, the California Highway Patrol reports.

Use Press classified ads to buy, rent or sell. Phone DA 5-1515

TORRANCE PRESS

W. R. Zappas, Publisher
William Edmond, Managing Editor
Larry Robertson, Circulation Manager
Walter Wehr, Mechanical Superintendent
Joy DeLany, Classified Manager
Established April 15, 1949
Published Semi-Weekly, Wednesday and Sunday. Entered as second class matter Oct. 8, 1957 at Post Office, Torrance, California, under act of March 3, 1879. Adjudicated a legal newspaper by Superior Court, Los Angeles County, Calif. Adjudicated Decree No. LB-C-23368, April 9, 1958.

Offices and Plant:
2238 W. Sepulveda Blvd.
Torrance, California
Telephone: DA 5-1515

Subscription Rates
(Payable in advance)
Carrier Delivery 25c per month
Local and Out-of-Town, per year \$12.00
All manuscripts submitted at owner's risk. The Torrance Press can accept no responsibility for their return.



DRIVING IS NEVER A PROBLEM

PARKING IS NEVER A CARE

M-T-A SAVES YOU MONEY

AND M-T-A GETS YOU THERE

LINE N. 51 (Connecting Palos Verdes, Redondo, Manhattan, Hermosa, El Segundo, Playa del Rey, Westchester, The New International Airport, Culver City and Los Angeles.)

Also service throughout all South Bay cities.)

For Information
Call Osborne 5-4461

Traffic Fatality Figures Increase In City Areas

Traffic fatalities in the state of California for the first three months decreased sharply in rural areas, but showed a marked increase in cities compared with last year, the California Highway Patrol reported.

Inspector Herbert W. Null, acting commander of the CHP's Los Angeles Office, said 890 fatalities were reported during the first quarter—six less than the same period in 1961.

However, fatalities in rural areas were down 13.09 percent; 458 compared to 527 recorded last year. Incorporated areas reported 432 fatalities compared with 369 in 1961 for a 17.07 percent increase, the Inspector stated.

Int'l. Airport Offers Special Easter Tour

Due to popular demand, a special Easter vacation week schedule will be offered for the public observation deck atop the futuristic Theme Building at Los Angeles International Airport, and for the glass-domed sightseeing trams that tour the new jet age terminal and other airport facilities.

During Easter vacation week, the observation deck will be open from 12 noon to 7 p.m. daily, with the usual fee of .10 cents per person, and children under seven are admitted free. The sightseeing trams, which pick up passengers every half hour in front of the Theme Building, will operate daily from 12 noon to 6 p.m. Fare is .50 cents for adults and .25 cents for children.

announcing

NEW DENTAL OFFICE
CREDIT TERMS

DENTAL PLATES

REPAIRS WHILE YOU WAIT
COMPLETE DENTAL SERVICE

EASY CREDIT TERMS

UP TO 36 MONTHS TO PAY!

Difficult Cases Welcomed
Always Low Prices
PENSIONERS WELCOME

- EXTRACTIONS
- FILLINGS
- PYORRHEA TREATED
- ROOFLESS DENTURES
- DENTAL PLATES RELINED
- TEETH EXTRACTED — PLATES INSERTED SAME DAY

NO APPOINTMENT NECESSARY

PHONE

Fairfax
8-0250

Se Habla Espanol

☆ SODIUM PENTOTHAL FOR EXTRACTIONS and FILLINGS
Also Dentistry for Children

DR. TARR

2418 TORRANCE BLVD., TORRANCE

NEAR CRENSHAW—GROUND FLOOR—MODERN, AIR-CONDITIONED OFFICE

TORRANCE FAMILY CREDIT DENTIST