

Torrance Builder Active in Three Area Projects

Realtor Al McBride, co-owner of Manhattan Realty Company, is a man who wears three hats.

As proprietor of one of the area's most progressive realtor organizations he has actively participated in the growth and development of Torrance as a home-town community and as an industrial center.

Member of both the Torrance-Lomita Board of Realtors and the South Bay Board of Realtors he currently operates three offices, at Palos Verdes-Monoco, at 22513 Crenshaw Blvd. in Torrance, and at 208 Ave. "I," Redondo Beach.

New Torrance office, which is located in the Sellaan Shopping and Professional Center, corner Crenshaw and Sepulveda, will head up the new Industrial Division of the Manhattan Realty Company.

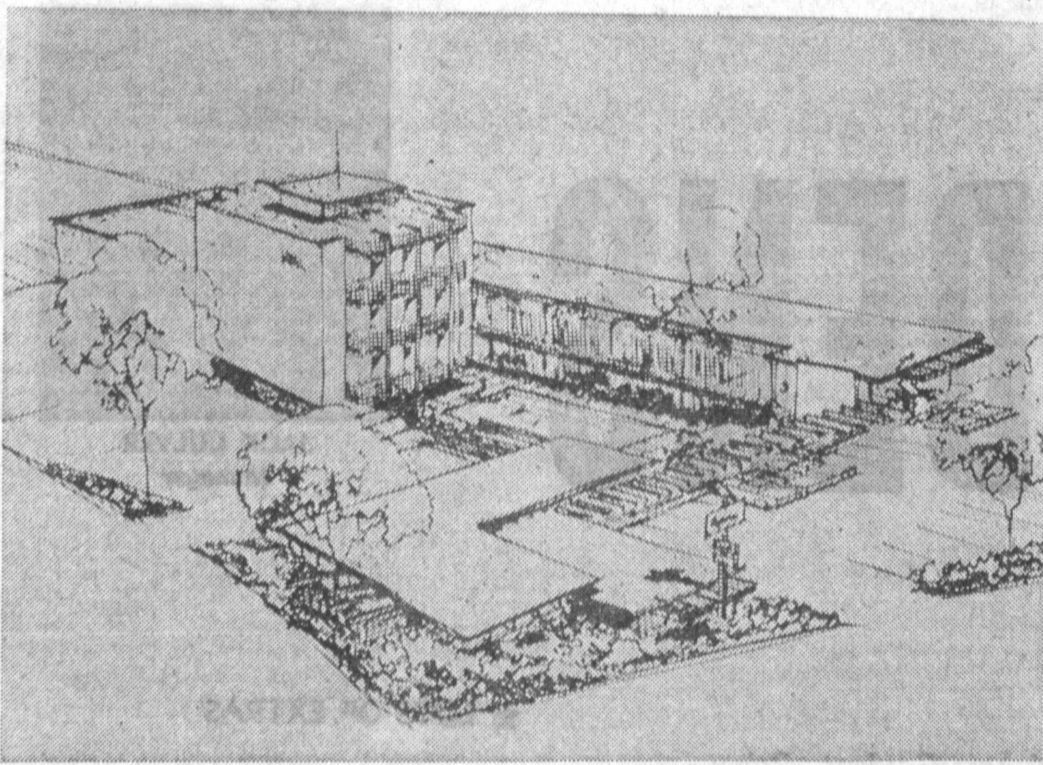
Sellaan Center, its operation and construction, is the second hat that McBride wears.

As a co-developer of the project he reports that the north wing of the huge building has been completed and that work on the expansive and beautiful west wing will start within 10 days.

New wing will house ten retail stores plus professional offices. Professional offices alone will encompass 11,000 square feet of space. Third hat that McBride wears is as co-owner of the multi-million dollar Caesars Motor Hotel, which will be built on Pacific Coast Highway between Crenshaw and Hawthorne Blvd.

Groundbreaking for the huge hotel will be held in mid-April. Five story structure, plus adjoining buildings will make this the first of the moderate high-rise buildings in Torrance.

Hotel will feature two penthouses atop the five story building. All modern, the building will feature beautiful design and interior decorating, elevators, unlimited view apartments and rooms and a Swedish Health Center, restaurant, bar, and small auditorium seating 300 people in the basement area.



TORRANCE LANDMARK — Ground-breaking for a new five-story motor hotel on Pacific Coast Hwy., between Crenshaw and Hawthorne, will be held in mid-April, it was reported this

week by Al McBride, co-owner. To be known as Caesar's Motor Hotel, the beautiful structure will be one of the first moderate high rise buildings in Torrance.

Torrance Douglas Facility Now Employs More Than 3100 Space Age Specialists

Employment at the Torrance facility, an integral part of Douglas Company's Aircraft Division, has risen to more than 3100 employees, according to Production Manager J.B. Gwaltney.

"In recent years, diversification of the facility's activities has placed the plant in a significant position to undertake production for both military and commercial aircraft," Gwaltney said. The company's Missiles and Space Division has assigned specialized work to the facility, the production manager said, but its nature cannot be revealed for security reasons.

After integration of all aircraft production into one division, the Torrance facility has increased in importance by acquiring fabrication work for the A4D Skyhawk which the company builds for the U.S. Navy.

McBride said that the hotel, which have more than 120 rooms, will be one of the showplaces of Torrance when completed.

SKYHAWK

The Skyhawk, in production since 1956, is a prime example of a modern weapons system which can be rushed into combat today in large numbers.

The latest version, the A4D-5, is equipped with a Pratt and Whitney Aircraft J-52 engine. This is a new high performance turbojet engine. The new Skyhawk is equipped with radar, autopilot and five multi-use external store stations. It has a modern fire control system for accurate delivery of all types of weapons under limited war and all-out war conditions.

Design features incorporated in the Skyhawk are the result of military requirements generated by the Korean War. In recent exercises both Navy and Marine Corps pilots have demonstrated its versatile weapon delivery capability, and the excellent availability of the airplane under simulated wartime conditions. The A4D is used by the Marines for air support missions in

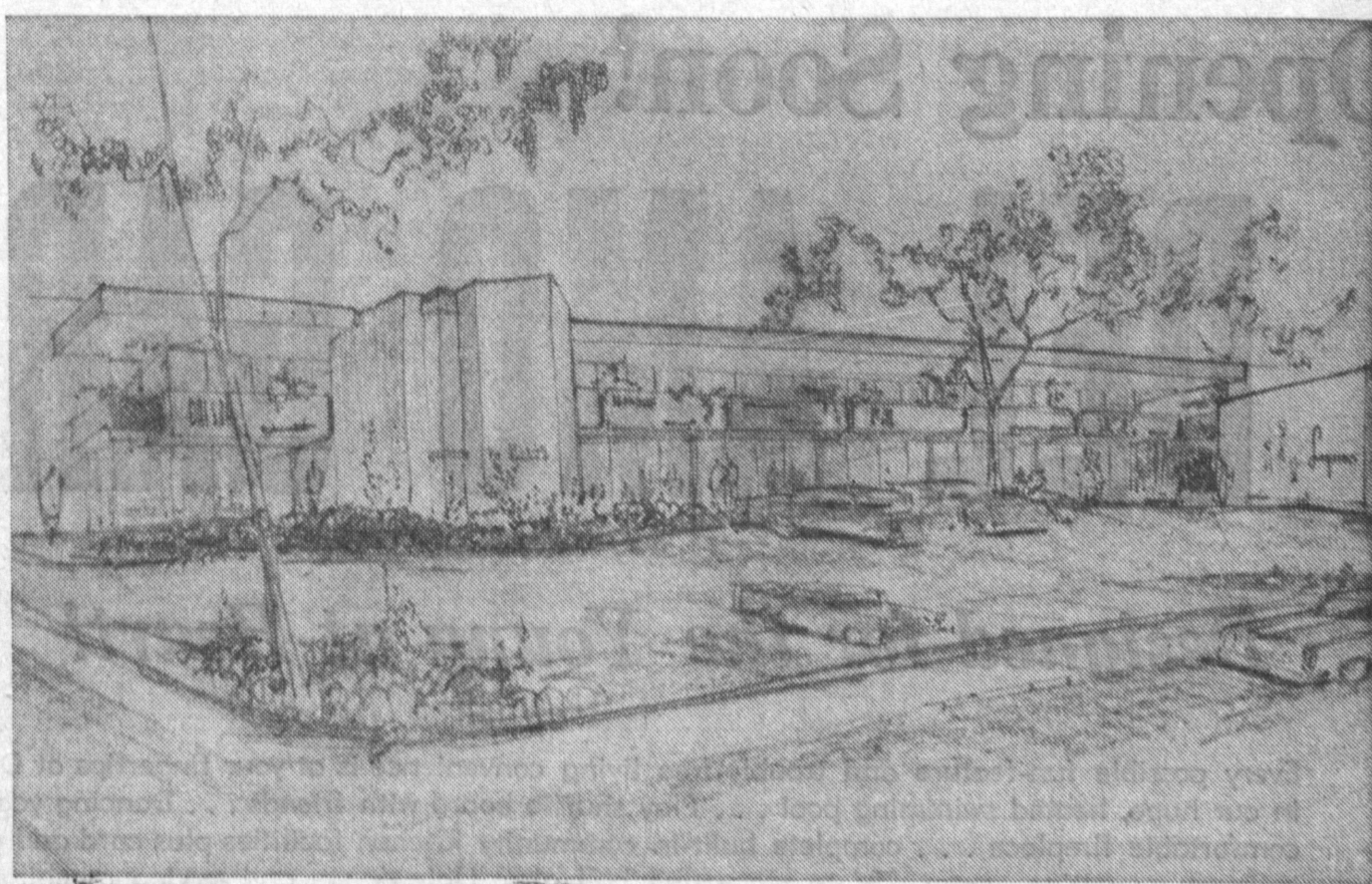
close proximity to ground troops.

EXTEND RANGE

External fuel can be carried to extend the range or to provide "hold time" on station. Air-to-ground missiles are provided for use against heavily defended "hot spots" where stand-off capability is required. When critical targets are knocked out with Bullpup, the Skyhawk's conventional low cost bombs, rockets and guns can be used to eliminate close-in targets.

Over a thousand A4D's have been produced by Douglas. Hundreds of the early model Skyhawks are now in service in the Mediterranean and Southeast Asia theatres operating daily patrols in the vicinity of brush fire areas.

Although most of the production for the DC-8 Jetliner is accomplished at Long Beach, an increasing flow of work has been transferred to Torrance because of the availability of modern and specialized tools. A total of 20 of the world's



NEW ADDITION — North wing of Sellaan Center, located at the corner of Crenshaw and Sepulveda, has been completed, reported developer Al McBride, and the west will be started within 10 days. Ten retail stores

plus professional offices will be located in the center when it is completed. Professional offices alone will occupy 11,000 square feet of floor space, McBride said.

leading airlines have purchased the big jet. With aerodynamic improvements to the wing, and powerful turbofan engines, the newest DC-8's are setting speed and distance records throughout the world.

634 MPH

The big DC-8, the Pacific Pacer, averaged 634 miles per hour on its 13 hour, 52 minute flight to Florida.

Distance traveled by the intercontinental DC-8 extended approximately one-third of the way around the globe and exceeded by al-

most 1,700 miles the previous non-stop flight record for commercial airliners. Established early in February, the prior mark was 7,023 miles from Seattle, Washington, to Beirut, Lebanon.

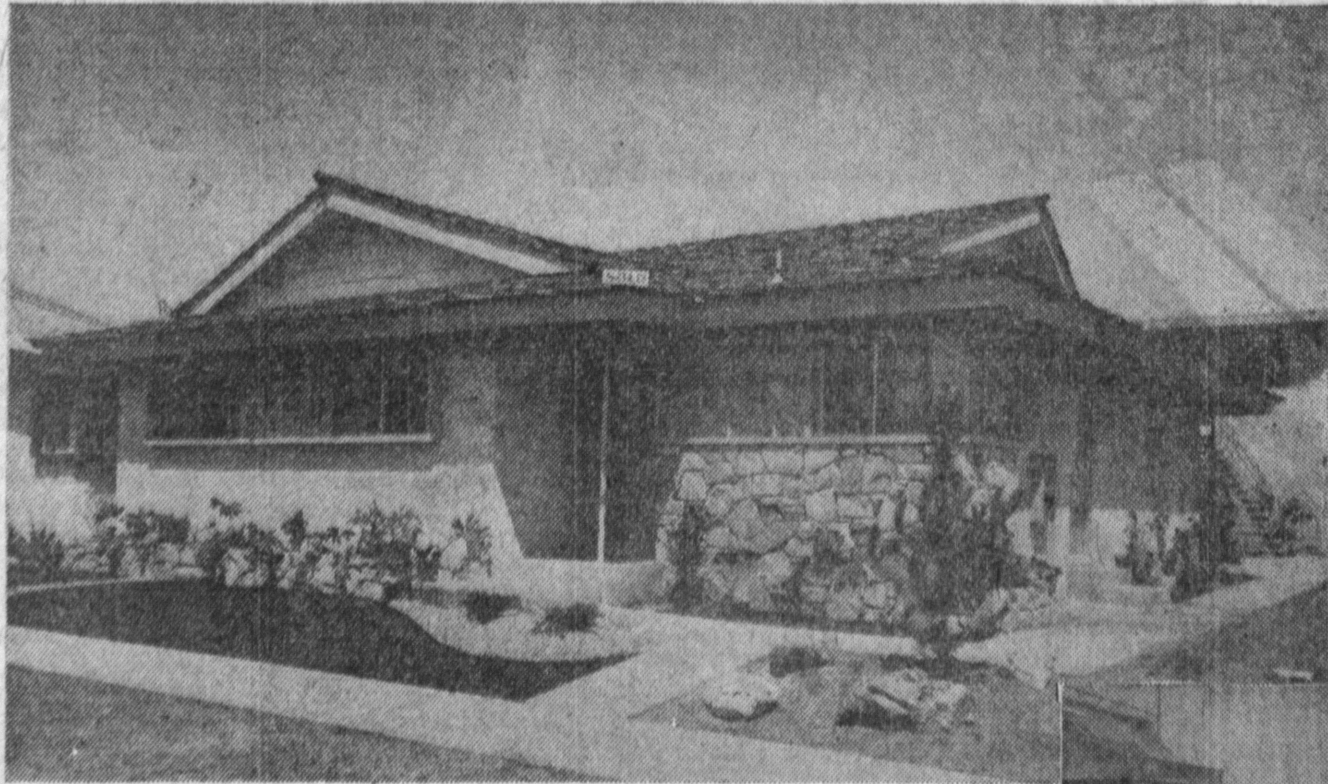
Top speed during the record-breaking flight was 790 miles per hour, reached when the Jetliner was about

2½ hours out of Tokyo. Aboard the DC-8 were 49 passengers, including crew members, airline executives and Douglas officials.

As production expands within the Aircraft Division, the Torrance facility will share the work with the Long Beach facility.



Welcome to the Newest Concept in Gracious Living!

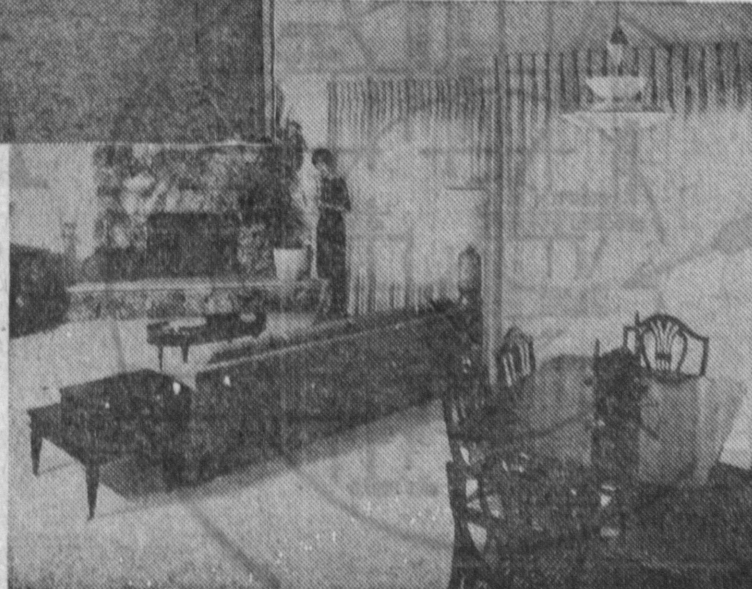


DISTINGUISHING FEATURES . . .

3 Large Bedrooms and Family Room in Owner's Residence, with Two Customized Designed Baths . . . Deluxe 2 Bedroom, Two Bath Income Unit, Detached Except for Roofed Breezeway, from Owner's Residence . . . Two Oversize One-Bedroom Income Units Over Garage Area . . . Five Garages with Extra Depth and Large Locked Storage Areas Off of Rear Private Roadway . . . All Outside Walls and Ceilings Fully Insulated for Maximum Privacy, Sound Acoustics, and Temperature Control.

- Gold Medallion Throughout.
- G.E. Built-in Ranges and Ovens.
- Dishwashers.
- Quick Recovery Water Heaters.
- Disposals.
- Ceiling Radiant Heat.
- Each Room Thermostatically Controlled.
- Genuine Lath and Plaster Construction.
- Heavy Hand-Split Cedar Shake Roof.
- Built-in P.M. Background Music.
- New Tone Mix Centers.

- Genuine Formica and Ceramic Tile.
- Large Stone Fireplaces.
- Glass Enclosed Shower Areas.
- Ash Paneling.
- Slate Entry Hall.
- Deluxe Mirrored Baths, Colored Fixtures.
- Large Wardrobe Closets with Full Folding Doors.
- Continuous Filament Nylon Carpeting.
- Sliding Glass Doors to Patio Area.
- Fully Landscaped.



a GILBERT D. SELLAN development

General Information:

Price . . . \$59,950.00

Suggested Down Payment . . . \$15,000



EXCLUSIVE OFFERING BY REALTOR

Al McBride and Associates

DBA MANHATTAN REALTY CO.

REDONDO OFFICE
208 AVENUE "I," REDONDO BEACH
Frontier 5-0088 Frontier 8-8288

TORRANCE OFFICE
22513 CRENSHAW, TORRANCE
DAvenport 5-3660