

TORRANCE PRESS

3238 SEPULVEDA BLVD., TORRANCE, CALIFORNIA

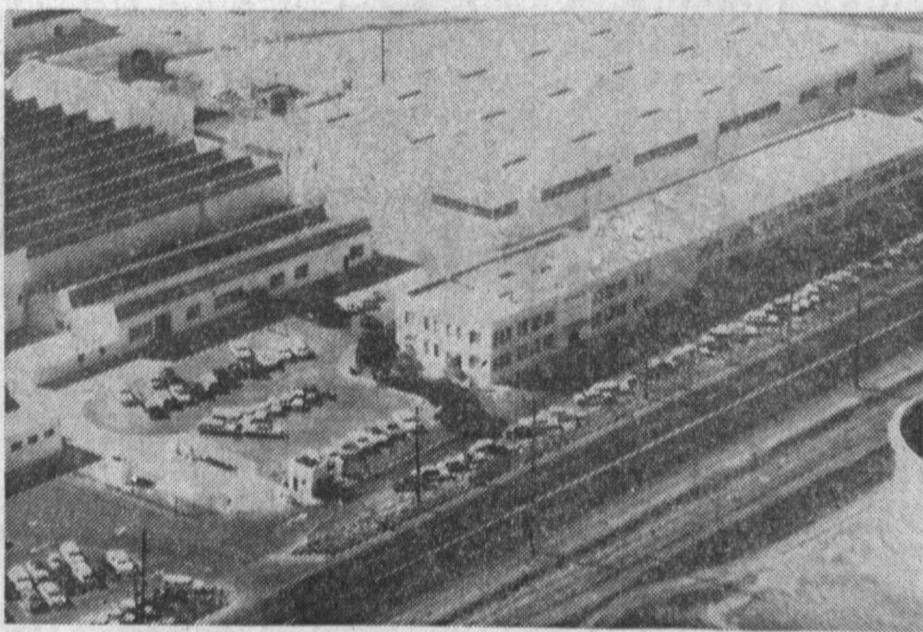
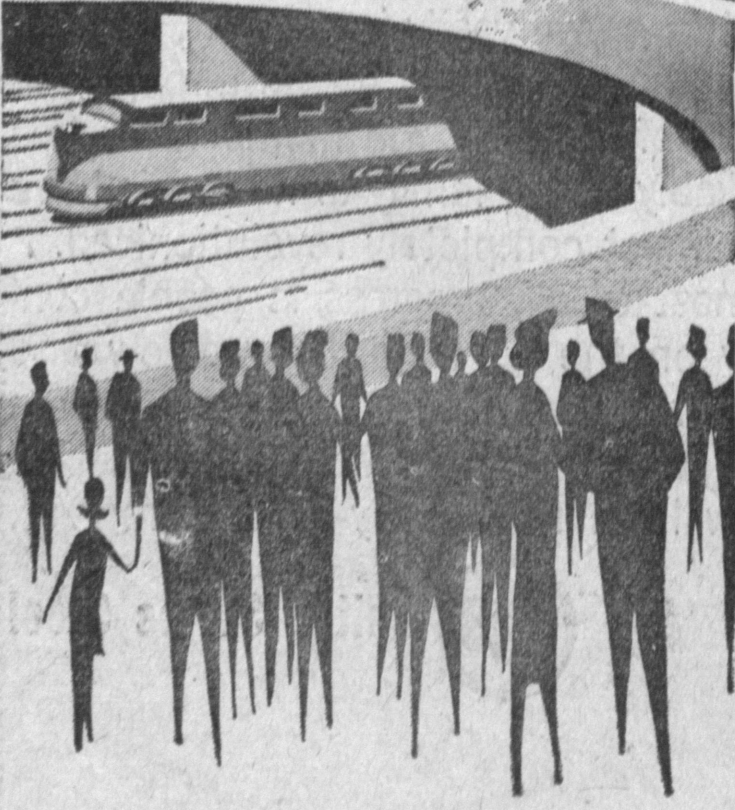
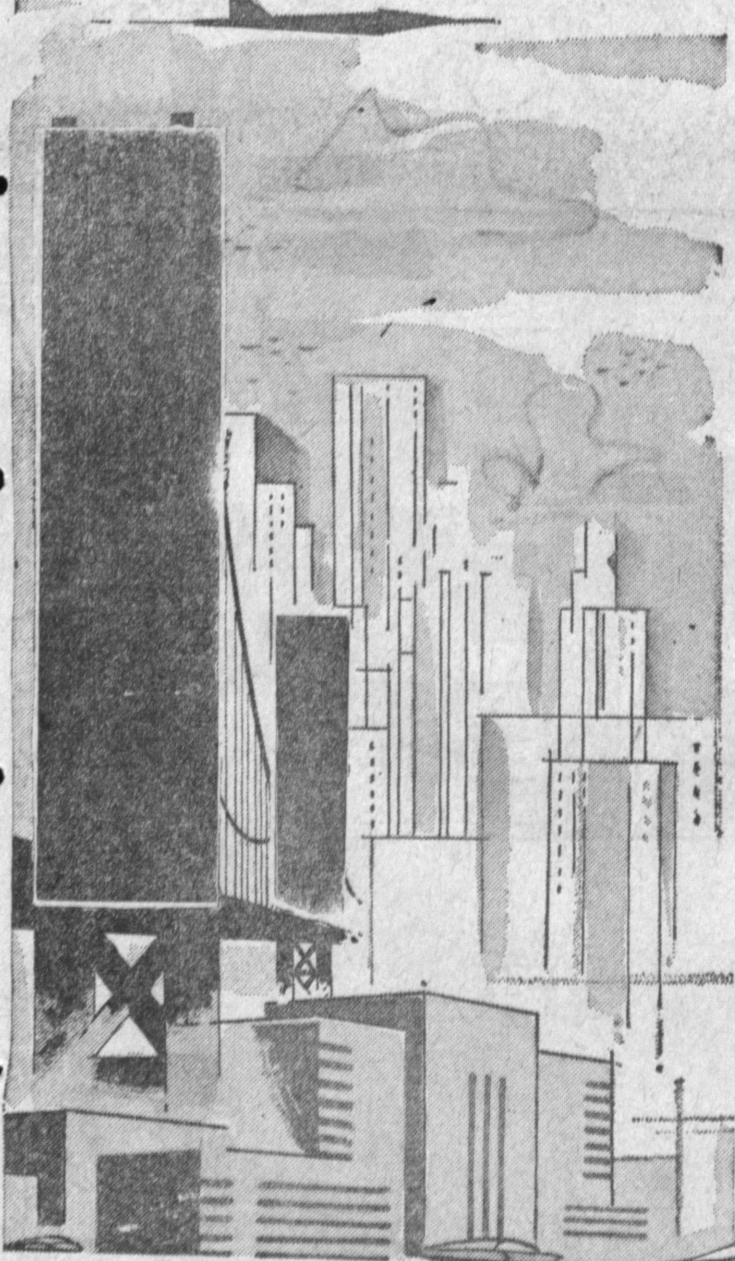
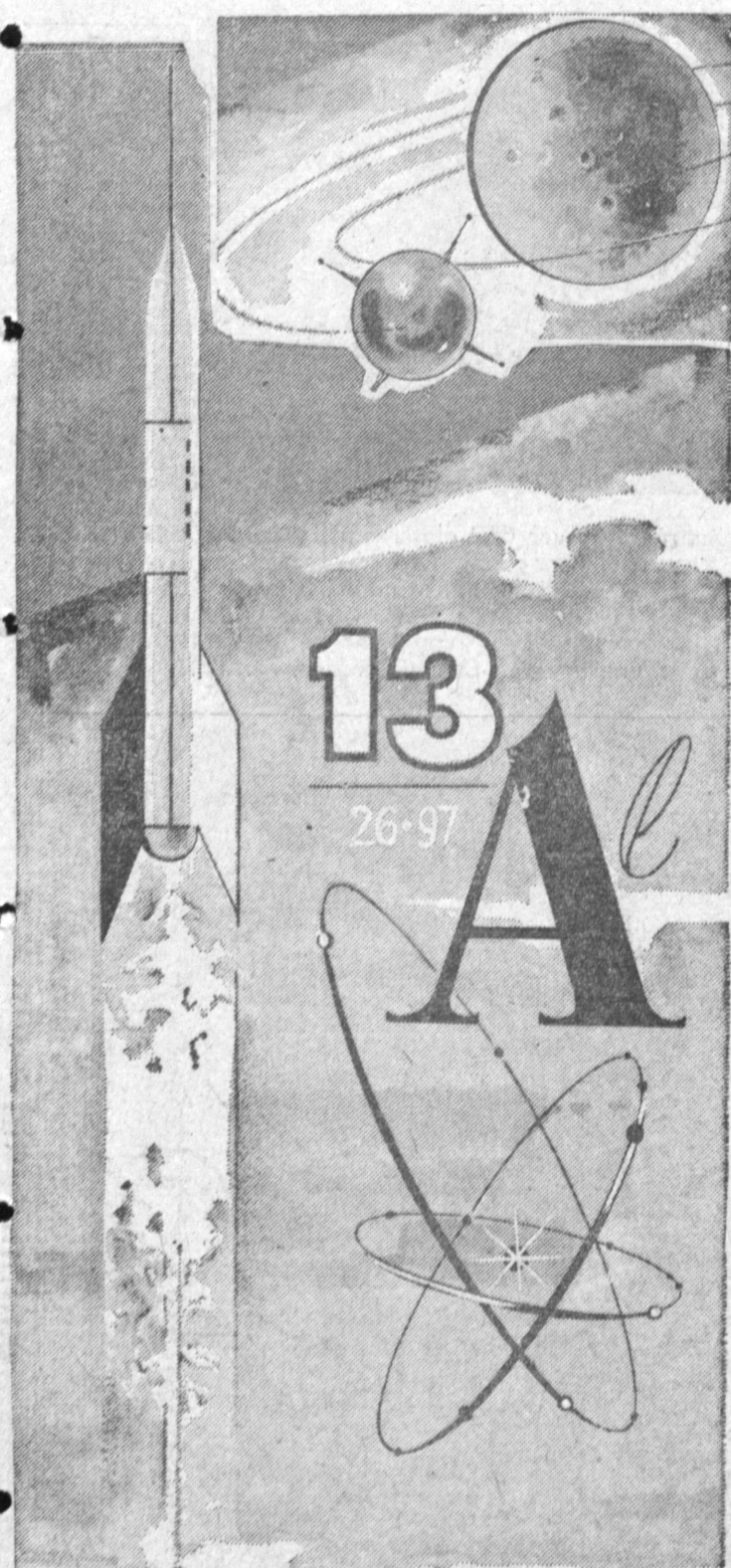
VOLUME XIII, NUMBER 97

SUNDAY, MARCH 25, 1962

10c A COPY

TORRANCE...

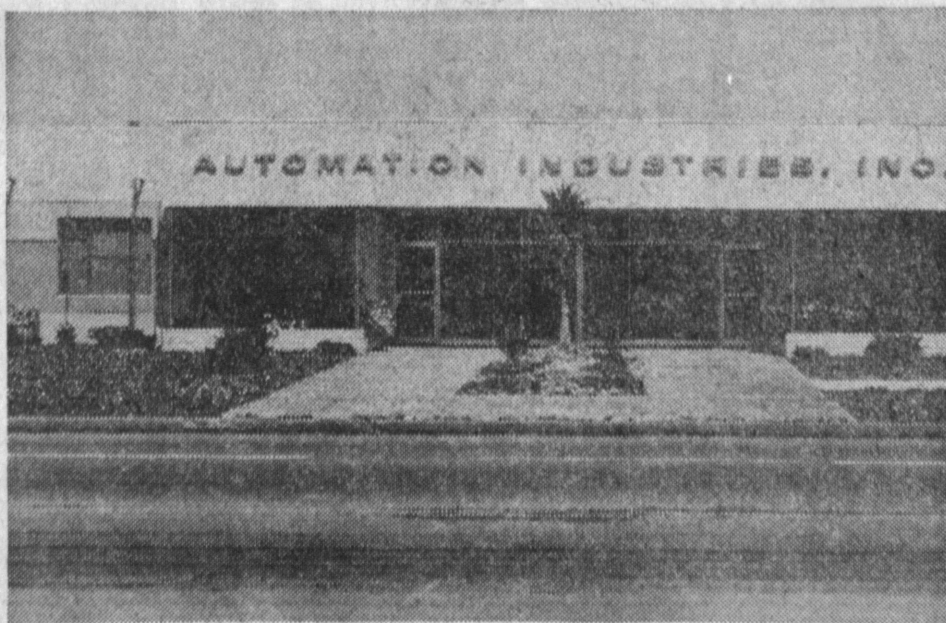
SPACE AGE CITY OF THE FUTURE



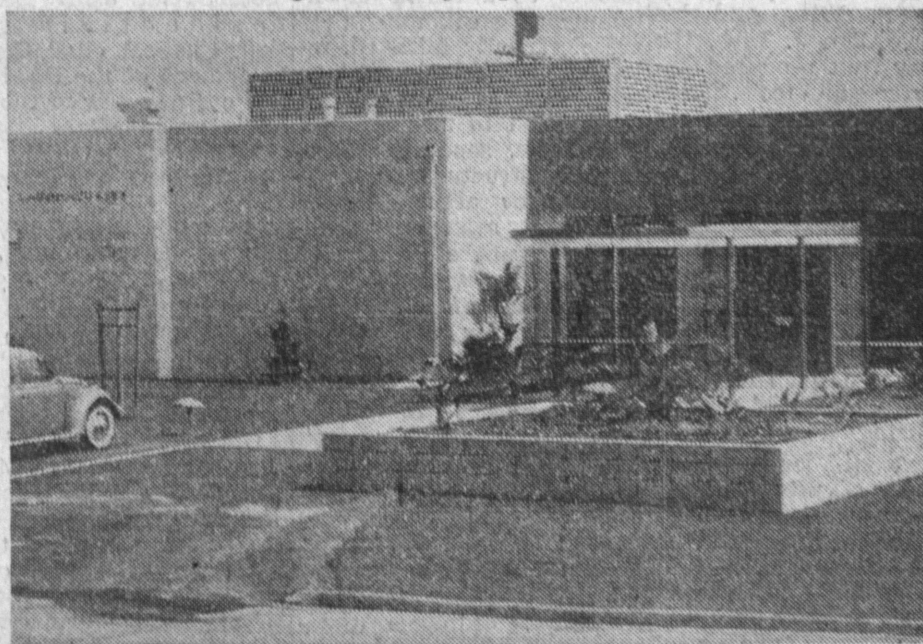
RYAN AIRCRAFT, 2750 W. Lomita Blvd., is one of the nation's oldest firms specializing in air research. Outstanding work done here has contributed immensely to past and future space probes.



VICKERS, INCORPORATED, 3201 Lomita Blvd., is currently contributing hugely in the race toward space. Portion of capsule that carried Col. John Glenn on globe-circling flight was made here.



AUTOMATION INDUSTRIES, 3501 Lomita Blvd., is leading the way in the field of electronics and missile guidance. A pioneer in the field, its contributions are outstanding.



MARSHALL LABORATORIES, 2008 W. Carson St., is a key contributor in the nation's drive toward space. Immensely important experiments are conducted here, key experiments in the field of scientific research.



GARRETT CORP., 2525 W. 190th St., has long been known as a pioneer in the field of air research. Its trained technicians now contribute to the field of space research and mechanics.



BASIC STEPS TOWARD OUTER SPACE are taking place in local Douglas Aircraft plants. Experiments that will some day lead to the stars are under way here.