

Sally Mason Featured in Play Being Presented Saturday

The California Western University Players of San Diego will bring a tense, modern religious drama, "Between Two Thieves," to the First Methodist Church in Torrance, Saturday, March 24, at 7 p.m.

The play will be open to the public.

The university group produced the provocative play in the campus theater for a highly-touted San Diego run three nights. The players will be touring churches in Southern California with the drama during March and April as a University service. The churches and the university are affiliated with

LEGAL NOTICES

CERTIFICATE OF BUSINESS, FICTITIOUS NAME
The undersigned do certify they are conducting a business at 21124 Hawthorne Blvd., Torrance, California, under the fictitious firm name of ROYALTY REALTY and that said firm is composed of the following persons, whose names in full and places of residence are as follows: LEWIS E. SMITH, 607-L Esplanade, Redondo Beach, California and PHYLLIS R. WARD, 5111 Lee Street, California. Dated March 5, 1962.

State of California, Los Angeles County:
On March 5, 1962, before me, a Notary Public in and for said State, personally appeared LEWIS E. SMITH and PHYLLIS R. WARD known to me to be the persons whose names are subscribed to the within instrument and acknowledged they executed the same.

RUTH H. PETERSON,
Notary Public
My Commission Expires June 6, 1965

Torrance Press, Wednesday, March 7, 14, 21, 28, 1962.

the Southern California-Arizona Methodist Conference. "Between Two Thieves" is the work of Italian playwright Diego Fabbri. Since its original presentation in 1955 in Italy, the play has been produced in France 900 times.

The drama revolves around a group of Jewish wanderers placed on a stark stage in contemporary dress. The actors spontaneously re-enact the Crucifixion, while attempting a modern interpretation of the age-old question "Who is guilty?"

The play was termed "a theatrical miracle" by New York Times critic Brooks Atkinson when it was presented in New York. Warner LeRoy's translation and adaptation for the Off-Broadway production is being used by the California Western University Players.

Donald L. Barbe, Fine Arts Division chairman at the university, is directing the unusual drama, and cast members include both faculty and students at the university. Sally Mason, a California Western University student from Torrance, is featured in the production.

Use classified. DA 5-1515

Rev. L. K. Parker Lectures Tomorrow

To better acquaint the public with the evils of the Communist menace, the third in a series of lectures is being held tomorrow night at 8 p.m. in Nativity Parish auditorium, corner Engracia and Arlington Avenues in Torrance.

The speaker will be Rev. L. K. Parker, O. Praem. Superior of the Norbertine Fathers and Rector of St. Michael's Seminary. Father Parker was born and reared in Hungary. He received a doctorate degree in theology from the Gregorian University in Rome in 1943 after which he returned to Hungary to teach philosophy and theology.

After five years under Russian occupation, Father Parker and six other Nor-

bertine Fathers cut their way through the iron curtain in July 1950. Father Parker's topic will be "Is Life Worth Living Under the Communist System and Rule?"

The public is invited in order to become more informed on this most pressing problem. There is no admission charge.

PROJECTION LIFE

The projection life of a color slide depends upon the amount of heat and light from the projection lamp falling upon the slide—as well as upon the total continuous and intermittent projection time. Slides can be shown many hundreds of times without much change, but over-long projection with high wattage lamps

'Creative Skeptics' Series Is Continued at Unitarian Church

"Creative Skeptics," a series of sermons by Richard Seebode, minister of Pacific Unitarian Church, began Sunday, March 11 with "Skeptics and Heretics." As introduction to this series, Mr. Seebode pointed out heresy is a set of opinions "at variance with established or generally received principles." In this sense, heresy is the price of all originality and innovation.

The sermon series is composed of the following: March 18, "Ikhnaton, the Egyptian;" March 25, "Buddha, the Indian;" April 1,

will damage them. Projection times longer than one minute should be avoided, and a lamp of higher wattage than recommended for the projector should never be used.

The heat-absorbing glass should never be removed.

On Thursday, March 22, the Liberal Arts Seminar on "Current Political and Social Issues" will present its second session. John Titus and John Young will speak on "The Impact of Science and Technology." Meetings are 8 p.m. at Waleria Park. The Fourth Annual Church Banquet will be held Sunday evening, March 25, at the Retail Clerk's Union Hall in Harbor City.

"I like my husband's job... it makes us eligible for..."

Certi-Bond

CERTI-BOND CHARTER MEMBERSHIP
LIFETIME REGISTRATION — NON-TRANSFERABLE
1962

JOIN CERTI-BOND NOW . . .

MEMBERSHIP DEPT. STORE WITH COMPLETE SUPERMARKET

MEMBERSHIP IS FREE!

ARE YOU ONE OF US?

If you need to fill a prescription, buy a can of peas, a choice steak, or a houseful of furniture—you'll save more every day in every way, in Certi-Bond's 40 Big Departments! Over 100,000 members make fantastic savings possible on 70,000 items. Why not join Certi-Bond today? Membership is free.

YOU MAY QUALIFY FOR CERTI-BOND MEMBERSHIP UNDER ANY OF THESE QUALIFICATIONS:

- Union Members
- Government Employees: Federal, City, County, State
- Employees of Firms Holding a Government Contract
- Employees of Non-Profit Religious, Charitable or Educational Institutions
- Employees or Public Utility Companies
- Members of the U.S. Armed Forces or Veterans of the U.S. Armed Forces
- Persons Getting a Government Pension or Social Security

Weekend Bonus Values!

GOLDEN VIGORO 40-LB. BAG	\$2.69	1.19 SIZE HALO SHAMPOO	79c
DICHONDRA FOOD, 60-lb. Bag	\$3.98	83c FAMILY SIZE COLGATE TOOTH PASTE	55c
MORRELL'S E-Z CUT FULLY COOKED HAM WHOLE OR SHANK HALF	49c	69c ECONOMY SIZE TUBE CREST TOOTH PASTE	46c
FARMER JOHN'S LINK SAUSAGE 1/2-LB. PKG.	23c	59c AEROSOL CAN REG. OR MENTHOL BURMA SHAVE CREAM	32c
OL' HICKORY SUGAR CURED SLICED BACON 1-LB. PKG.	49c		



MEMBERSHIP DEPARTMENT STORE WITH COMPLETE SUPERMARKET

501 S. Arlington, Torrance, Calif.

KEEP YOUR CITY GREAT

Councilman Jay Beasley
ENJOYS REPRESENTING
Citizens of Torrance
4 Years on City Council
8 Years on City Commissions
Sponsored by Friends of J. A. Beasley



Let's Put Torrance in the Green Zone!



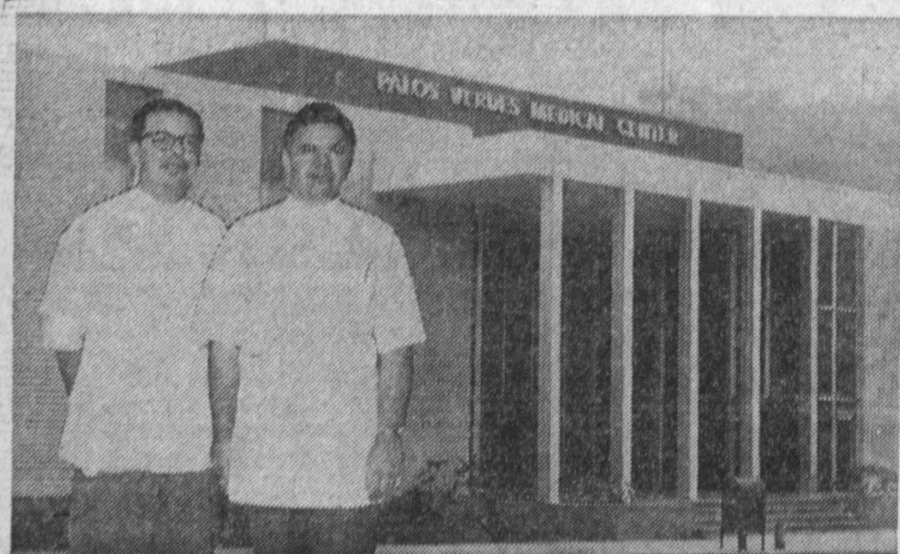
- A: Establish City Beautification Commission
- B: Encourage citizen participation
- C: Hire a municipal landscape architect
- D Start now . . . plant greenery on Hawthorne Boulevard

ELECT TO CITY COUNCIL

JOHN J. BARTON ☒

A MAN WITH CONSTRUCTIVE IDEAS

"WHO'S WHO" BUSINESS INDEX



THREE OFFICES—South Bay Optical combines 22 years of highly specialized optical services to the public. In Hollywood Riviera, the address is 1712 1/2 S. Catalina; Manhattan Beach, 845 Manhattan Beach Blvd.; and their newest office is in the Palos Verdes Medical Center, 27927 Deep Valley Road in the Peninsula Shopping Center. Friendly, expert service is provided when having eye physicians' prescriptions filled; lenses, frames, repairs; contact lenses fitted and complimentary adjustments made on your glasses.

ARCHITECTURAL DESIGNING **W. A. POLLOCK & ASSOCIATES**
VA and FHA Subdivisions, Apartment House Projects and Custom Homes Design.
23810 Hawthorne Blvd., Torrance 375-2509

BAKERIES **RANCHO BAKERY**
Complete Line of Bakery Goods. Specializing in Birthday, Anniversary and Wedding Cakes. Special Orders Can Be Filled in One Day!
17222 Hawthorne Blvd., Torrance 371-9593

BEAR WHEEL ALIGNMENT SERVICE GARAGE
HERBORN'S ALIGNMENT SERVICE
Official Bear Alignment Service—Brake—Balancing—Tire-Turning
Complete Front End Rebuilding and Alignment—Free Pick-up and Delivery
Ron Palmer — Manager
20555 Hawthorne Blvd., Torrance FR 1-4451

OFFICE SUPPLIES **STATE OFFICE SUPPLY**
Complete Line of Office Machines, Photocopy and Duplicating Machines.
Lease and Rent All Types of Machines, Office Furniture, Files and Supplies.
24202 Crenshaw Blvd. at Lomita, Torrance DA 5-1655



ARCHITECTURAL DESIGNING — And aracting for commercial development is part of the work performed by W. A. Pollock and Associates. The firm makes its headquarters at 23810 Hawthorne Blvd. in Torrance. Pollock specializes in Veteran's Administration and Federal Housing Administration subdivisions, apartment house projects and custom home designing. Pollock is a member of the Waleria Kiwanis Club and the Young Home Builder's Association. He is also a member of the American Institute of Building Design. So if you are looking for help in designing a new home, give Pollock's a thought. Telephone is FR 5-2509. Address again is 23810 Hawthorne.

RESTAURANT **HOUSE OF SWEDEN**
Smorgasbord; 16 Dishes for Lunch, \$1.10. Tuesday, Wednesday, Thursday, Friday, 11:30 a.m. to 4 p.m. 25 Dishes for Dinner for \$1.65. Tuesday, Wednesday, Thursday, Friday, 4 p.m. to 9:30 p.m. Dinner from 11:30 a.m. to 9:30 p.m. Saturday and Sunday Closed Monday.
305 Avenue "G" at Pacific Coast Hwy., Redondo Beach FR 5-0089

GOLDEN GATE TAVERN
117 Bond St., Redondo Beach 374-9655
Finest New Orleans style jazz band, every Fri. and Sat. night from 9 p.m. to 1 a.m. Across from Fisherman's Wharf. Ample parking. Open daily from 10 a.m. to 2 a.m. Closed Monday

TRAILERS **GEO. W. FRY, INC.**
New and Used Trailers. Factory Distributor for Paramount, Angelus, Mayflower, Double Wide, Great Lakes, Ken-Skill, Travel-Ease, Shasta and Riviera.
Will Take Cars, Real Estate, Etc. in Trade.
2117 Pacific Coast Hwy., Lomita DA 6-2200



H AND H FEED STORE—From pigeon feed to concrete blocks is the line of equipment carried by H and H Feed Store, 2755 Arlington Ave., Torrance. Owner of the store is Roy Hutsler. The store, which has been owned by Hutsler's family for nine years, is presently undergoing remodeling, so that more service can be offered. H and H carries all types of feed for pets and gardening. Tools, fertilizers for plants and insecticides are only a few of the supplies. In addition birds, hamsters, tropical fish and goldfish are carried. The shop is open from 8 a.m. to 5:30 p.m. Monday through Saturday and from 9 a.m. until 4 p.m. Sunday. Telephone is FA 8-1714, and that address, again, is 2755 Arlington Ave., Torrance. Give H and H a call. You'll be glad you did.

DISPENSING OPTICIANS **SOUTH BAY OPTICAL COMPANY**
Eye Physicians Prescriptions Filled — Lenses — Frames — Repairs — Contact Lenses Filled
Complimentary Adjustments Made on Your Glasses.
TWO LOCATIONS TO SERVE YOU
EDWARD C. PRICE — Hollywood Riviera — 1712 1/2 S. Catalina Avenue FR 5-7460
CLIFFORD C. VALENTINE — Manhattan Beach — 845 Manhattan Beach Boulevard FR 4-0485

DRAPERIES **MARTIN'S DRAPERIES**
Specializing in Draperies, Bedspreads, Slip Covers, Shades and Shutters. Only Beauti Pleat Dealer in Area. Drapery Cleaning, Hardware Removing and Installing.
Free Estimates on Problem Windows.
3776 Pacific Coast Hwy., Redondo Beach 375-1911

FEED—TROPICAL FISH—PET SUPPLIES **H & H FEED STORE**
Concrete Block - Sand - Gravel - Cement - Garden Supplies - Birds - Hamsters - Goldfish - Tropical Fish and Supplies. FREE GOLD FISH with this ad (expires Mar. 18). Visitors always welcome. Hours: 8 a.m. to 5:30 p.m.—Sunday, 9 a.m. to 4 p.m.
2755 Arlington corner Sepulveda — Torrance FA 8-1714
Roy and Marion Hutsler — Props.