

New Concepts, Ideas Proposed During Campaign Season

Election year is a noisy time in most communities. Campaign promises fly like the wind and the virtues and drawbacks of various platforms are the major topic of conversation.

All of these planks in campaign platforms are honest, needed improvements in the community. But, in all honesty, most of these planks are identical; differently worded but identical.

Now and then a new concept is advanced, an idea that will save the taxpayers money or will improve usage of facilities already available.

These ideas are well worth waiting for.

One such idea has already been advanced during the campaign. A candidate for the city council has pointed out that the recreational facilities of Torrance, provided at great expense, are not utilized to the fullest extent.

YEAR-ROUND USE

Noting that the community plunge at the corner of Torrance and Madrona is an outdoor pool he is advocating covering the facility so that it can be used all year round instead of the warm months.

He also points to the sad fact that parks and city-provided recreational facilities are not well patronized, either by youngsters or adults.

He is advocating a stepped-up promotional campaign aimed at increasing the usage of these facilities which represent a great investment by the taxpayer.

This, and similar, ideas are the great points of a local level election. This is the time when new concepts are broached, explained and analyzed.

Everyone, especially the taxpayer, benefits from this uniquely American approach to basic community problems.

Phone Company Will Spend \$3 Billion Before 1970

Pacific Telephone expects to spend some \$3 billion between now and 1970 to meet growing California-Nevada telephone needs, President Carl O. Lindeman announced in his annual report to shareholders.

Lindeman said "it seems clear that significant growth is bound to continue. By 1970 it is expected that there will be over 21 million people in California and Nevada, as compared with 17 million today. By then, we estimate we will be serving nearly 11 million telephones."

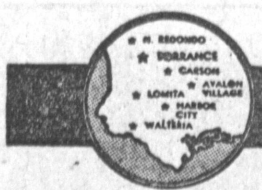
The company serves some 6,757,000 phones in its territory today, an all-time high.

Lindeman reported the company's earnings were \$1.43 per share in 1961, the same as in 1960.

REVENUE

In its operations in California and Nevada, which is the territory now served by Pacific Telephone Company, operating revenues were up from \$914,700,000 in 1960 to \$984,672,000 in 1961, while total expenses went from \$769,439,000 in 1960 to \$825,984,000 last year. Taxes alone increased from \$215,692,000 in 1960 to \$238,485,000 in 1961.

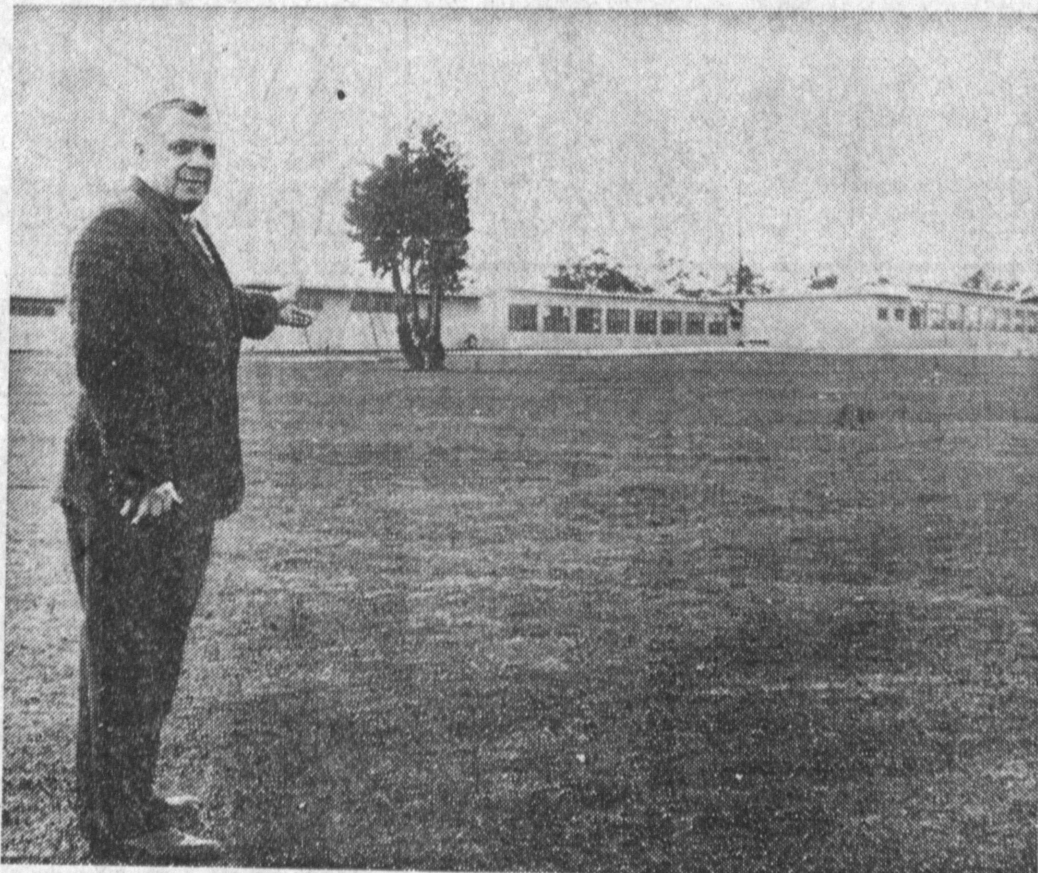
Construction outlays for 1961 rounded out at \$327 million — averaging more than a million dollars for every working day.


TORRANCE PRESS

EDITORIAL PAGE

W. R. ZAPPAS, Publisher

W. E. EDMOND, Managing Editor



NOT IN USE — Playground and recreational facilities in Torrance are not being used to their fullest extent, contends Ross Sciarrotta, candidate for city council. Sciarrotta advocates promotional campaign aimed at in-

forming residents of recreational activities available at city parks and playgrounds. Issue will be one of the major planks in Sciarrotta's campaign for election to the top city post.

Probation Department, Soon in Torrance, Acquires First Youth Research Expert

Faced with a rising crime rate, particularly in the area of juvenile delinquency, the Los Angeles County Probation Department has acquired its own research expert for the first time in its more than fifty years of operation.

Dr. Stuart Adams, who for the past three years has been engaged in research projects for the California Youth Authority in Sacramento, starts work here today as research director, it was announced by Chief Probation Officer Karl Hol-

ton. "We've got to take a critical look at what we are accomplishing," Holton said. "A full-time research team will help us to gear our work to the best criminological knowledge available and help us find still better means of crime prevention and control."

Largest in the world, the County Probation Department handles more than 17,000 juveniles and 25,000 adults in its annual caseloads. Courts and probation agencies around the world

have recently sent their representatives here to study and emulate our methods. Several foreign nations have remodeled their systems after that of this county, with Japan currently in the pro-

cess of effecting the change. Today, the probation and correctional agencies of many states of the Union, are headed by former Los Angeles County probation staff members.

Letters

Our way of life is such that we must now take steps to assure the peoples of this State that we are doing everything in our power to keep "Safety" the word to live by. New highways and freeways are being built to insure the peoples of this State the best and safest ever built by man. We must project the word "Safety" beyond our wildest dreams.

Our law enforcement agencies are doing everything possible to keep them safe. Highway commissions and engineers put the latest safety configurations into their plans. They hope to make and keep this the "Safest" state in the world. Now, we the people must help them.

Let us: 1. Travel at the posted speed limits. A little less speed makes for a safe arrival.

2. Install street signs so they can be easily identified.

3. Give the public every consideration in "Safety" measures.

4. Introduce legislation compelling all cars traveling on our highways be "State Inspected" by official State inspection stations. This means that all cars are functioning properly; brakes, lights, wipers perfect. No worn king pins, or shocks. No toe in or out. Emergency brake perfect.

These are a must for 1962. Cars sold on used car lots, and new ones, would then be put on our roads in perfect condition.

Our very lives are at stake. Let us resolve to do everything possible to sustain it.

We want official state inspection.

Respectfully Submitted,
Charles W. Pavlu
1006 E. Spicer St.

Supervisors Urge Freeway Routes for Rapid Transit

Supervisors this week stepped up the drive to convince the Metropolitan Transit Authority to use existing, publicly owned rights-of-way as routes for a proposed mass rapid transit system, such as a monorail system along the freeways.

They also were sharply critical of what was termed "engineering stupidity" in respect to letting rights-of-way which might have been improved for rapid transit slip from the hands of the public.

Board of Supervisors has urged that a mass rapid transit system serving Los Angeles International Airport be constructed as soon as possible.

Clerk of the Board Gordon Nesvig was instructed to send a letter containing the Board's action to the California Congressional delegation, Senators Thomas Kuchel and Clair Engle and Senator Harrison Williams, chairman of the Senate's Transportation Committee.

MONORAIL

Supervisor Kenneth Hahn suggested a monorail route could run along the Harbor Freeway to San Pedro—on publicly owned right of way—with a connecting line running west on Imperial or Century Boulevard to the airport.

"Seven million persons a year use the airport, but they have no rapid transit system serving it," Supervisor Hahn observed. "The public is not being properly served when it takes longer

to get to the airport from some points within the city than it does to get from one state to another," he said.

"It would be a sound, practical and economical approach to use the right of way of the existing freeway system for mass rapid transit," Supervisor Hahn said. "The system could be built along the side of the freeways or in some cases where the median section is wide enough, such as along the San Bernardino Freeway, the median strip should be used."

He pointed out that since freeway rights of way are already publicly owned they are logical rapid transit routes and could account for saving millions of dollars needed to buy costly right of way.

Pointing to a shift in MTA opinion which favors using an abandoned Pacific Electric right-of-way on Long Beach Boulevard as a rapid transit route, Supervisor Hahn observed:

"What a price we're paying for engineering stupidity. Eventually, we are going to have to spend millions to use routes established in 1905."

X-RAYS

Sick and suffering people now have the advantage of X-rays in the control of tuberculosis and other diseases. CARE has rolling mobile clinics which take such aid to long suffering victims in newly developing areas.

TORRANCE PRESS

W. R. Zappas, Publisher
William Edmond, Managing Editor
Al Frazier, Circulation Manager
Walter Wehr, Mechanical Superintendent
Jay DeLany, Classified Manager

Established April 15, 1949
Published Semi-Weekly, Wednesday and Sunday. Entered as second class matter Oct. 8, 1957, at Post Office, Torrance, California, under act of March 3, 1879. Adjudicated a legal newspaper by Superior Court, Los Angeles County, Calif. Adjudicated Decree No. LB-C-23348, April 6, 1958.

Offices and Plant:
3225 W. Semple Blvd.
Torrance, California
Telephone: DA 5-1515

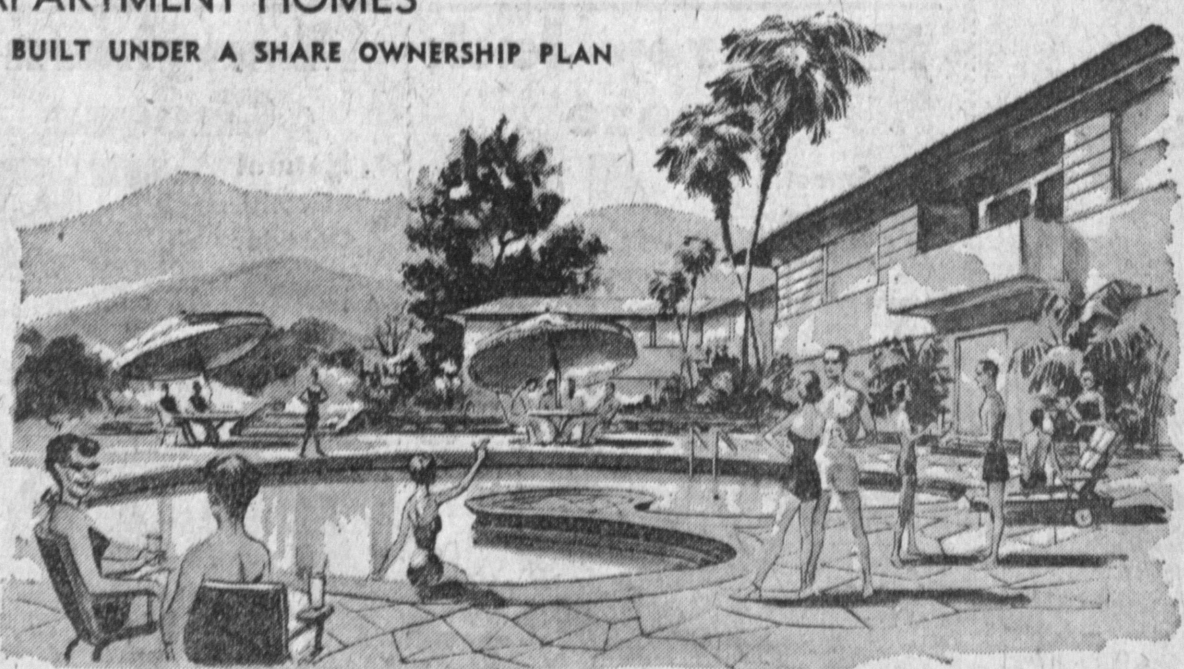
Subscription Rates
(Payable in advance)
Carrier Delivery..... 45¢ per Month
Local and Out-of-Town, per year... \$12.00
All manuscripts submitted at owner's risk. The Torrance Press can accept no responsibility for their return.

WHY PAY RENT? WHY MAINTAIN A HOME?

HAVE THE FREEDOM OF AN APARTMENT RESIDENT AND THE BENEFITS OF HOME OWNERSHIP IN THE NEW

DEL AMO PACIFIC COOPERATIVE
APARTMENT HOMES

TO BE BUILT UNDER A SHARE OWNERSHIP PLAN



Features include a large, heated pool, individual private patio or sundeck, tropical landscaping, recreation room. Putting greens in adult units or children's play areas in family units . . .

**\$120 Reserves
Any Apartment**

FULL PRICE OF SHARE from \$475.00
(Includes 10% Selling Cost)

Monthly payments start at \$109.50 and include mortgage equity and interest (5 1/4% loan anticipated), maintenance, gardener and janitor service, pool upkeep, insurance, property taxes, repairs and reserve funds.

LOWER YOUR INCOME TAXES!

Deductions for interest and property taxes, which can be made on income tax returns in the opinion of counsel, reduces the actual monthly cost to the share owner-resident.

SOVEREIGN DEVELOPMENT CO.

CALL
FA 0-3152

3300 CARSON STREET
TORRANCE

CALL
SP 5-2591

1ST IN SOUTHERN CALIFORNIA GAS DRYERS

1st in Sales—Actual sales figures show that more Southern Californians buy gas dryers than any other kind.

1st in Installation Savings—Gas dryers require no expensive wiring.

1st in Speed—Automatic gas dryers work up to 4 times faster.

1st in Savings—Fluff-dry a week's wash for 1/4 the cost.

1st in Trouble-free Performance
Gas dryers have no costly coils to burn out; lifetime gas burner.

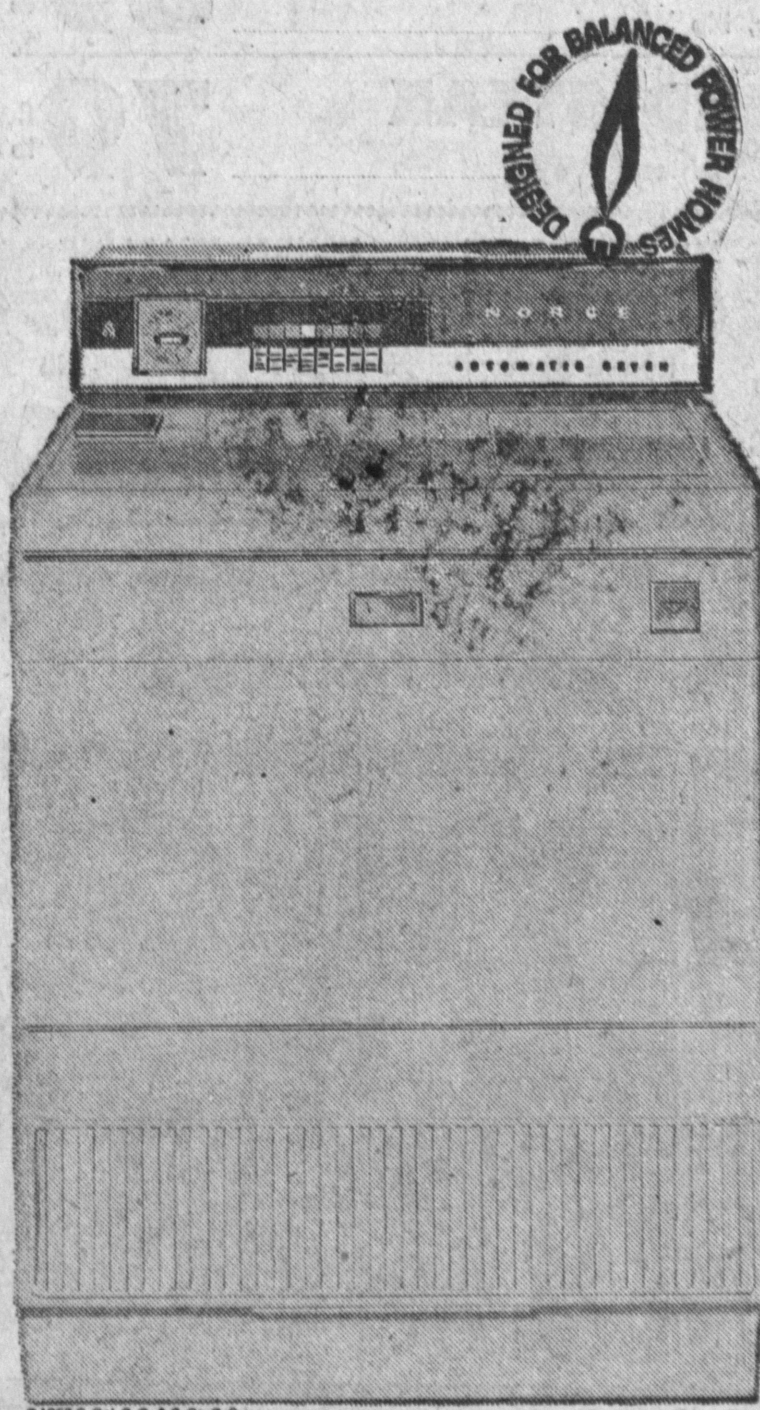
1st in Self-service Laundries
Almost 100% of all self-service laundries in Southern California use gas dryers exclusively.

1st in Commercial Laundries
Almost 100% of all commercial laundries in Southern California use gas dryers exclusively.

**BUY NOW—WHILE DEALERS ARE
FEATURING AUTOMATIC GAS DRYERS**

SEE THE NEW MODEL AUTOMATIC GAS DRYERS AT NEAR-BY GAS APPLIANCE DEALER OR GAS COMPANY SHOWROOM. SELECT FROM THESE FAMOUS-NAME MAKES: RCA WHIRLPOOL, NORGE, MAYTAG, FRIGIDAIRE, KELVINATOR, HAMILTON, EASY SPEED QUEEN, BLACKSTONE, PHILCO-BENDIX, DURACREST

SOUTHERN CALIFORNIA GAS COMPANY



© 1962 S. Cal. G. & S. Co. G.C.