



**APARTMENT ATTRACTION** — The all-electric furnished model apartment (shown above) gives visitors a small sample of what is available at the Del Amo Pacific cooperative own

your own apartments being constructed at 3300 Carson St. The attractive units are a Sovereign Development Company project.

## High School Students Will Model for Two Fashion Shows

A fashion show will be presented by Elizabeth Stewart's Swimwear for North High School's Girls' League on Feb. 20, according to Mrs. Barbara Pegg, Girls' League sponsor.

Fifteen North High girls will be chosen to model swimwear, sportswear and dresses. Each model must be at least 5 feet 6 inches tall or more, and wear a size 12. They will model five outfits each.

Elizabeth Beck, design director for Elizabeth Stewart Swimwear, will speak on the California fashion industry, history, opportunities, and present success stories.

Prudence Michaels, fashion director for the Associated Merchandizing Corporation, and Margi Wilson, hair stylist at Patty Woodward's will also give fashion and hair styling hints.

### NARBONNE

Another fashion show will be the highlight of the Narbonne PTA association meeting to be held in the multipurpose room Tuesday, Feb. 20 at 1:30 p.m. Students will model their own creations and will be assisted by members of the faculty.

Past presidents of the as-

sociation since its founding will be the guests of honor. Many will travel great distances to renew old friendships.

The nominating committee for officers for the 1962-63 year will be elected and delegates to represent the association at the council and district elections will be chosen.

Mrs. Joseph Butler, presi-

dent, urges the new B10 mothers to attend this association meeting to acquaint themselves with the school and the PTA. Mrs. Butler will present to the association an award recently received from 10th district in recognition of achievement in parent education. The class held was entitled "Discipline in School."

## Torrance Toastmaster Presents Speech, 'Squeeze That Dollar'

The South Bay Toastmaster Club 280 is conducting a weekly speaking contest between members during February and early March. The final winner will represent the club in the area speak-off on March 28.

The contests at club, area, district and national levels are preliminary to the international contest later in the year for the Toastmasters Speaking Championship of the World.

Club president, Thomas Eadie, Hollywood Riviera, announced that the public is invited to attend the speech competitions held every Wednesday evening at 6:45 p.m. at the Redondo Beach Elks Club.

### FORMAL SPEECHES

A recent meeting of the

club featured a program of formal speeches of considerable variety.

Fred Strible, Manhattan Beach, spoke on "The Moon Man." Stanley Levenson, Manhattan Beach delivered a talk on "Support Your Schools."

Donald Payne, Torrance presented a speech on "Squeeze That Dollar." A humorous talk was given by James Coyle, Hermosa Beach, with a description of "A merican Drinking Habits."

The speakers of the evening were so well matched that a winner could not be determined.

Men in the Torrance area interested in speech training call FRontier 2-9347 for further information.

### AIR CONDITIONING

An inexpensive way to keep you home cool in summer is to have extra wide roof overhang.

### Cash and Carry



**MILK** **21¢**  
**Palos Verdes View Dairy**  
22845 Hawthorne Bl.  
FR 5-8615  
Torrance's Drive-in Dairy



R. S. Pyle, your Telephone Manager in Torrance

## WHAT'S DOING

### Umbrellas or Sun Glasses?

Now you can keep informed on current weather conditions by just dialing 554-1212. That's the number of Pacific Telephone's "Weather Service," which reports forecast information received direct from the U. S. Department of Commerce weather bureau at International Airport. The reports cover Los Angeles and vicinity from the beach cities inland through the San Fernando and San Gabriel valleys.

The charge for a weather call is the same as for a call to any MAdison number in downtown Los Angeles.



Imagine spending 8,760 hours on the phone. It might seem impossible (to anyone but a teenager). Yet a survey shows that's how many hours the average man in his lifetime spends telephoning.

This in itself is a good case for having extension phones wherever you need them to save steps.

So if you want to make your telephone hours more enjoyable, find out about extension phones—in colors and different styles—for your home or office. Call your business office or ask your telephone service man.

Another question I've been asked is why do so many men who work for the phone company wear glasses? Fact is, they may have perfect vision, and we want to keep it just that way.

The glasses telephone men wear on the job are individually fitted safety glasses. They look like ordinary ones, but they're specially made so they won't shatter.

Protective glasses may not seem like a very dramatic safety feature. But they can be every bit as important as a lineman's safety belt to the men who bring you telephone service.

Pacific Telephone

## Festival of Arts Shared by Members of Women's Clubs

The annual Fine Arts Festival of the Marina District 18, California Federation of Women's Clubs, will be held Thursday, Feb. 22, at the Neptunian Club, 920 Highland Ave., Manhattan Beach.

Mrs. Harry Pawling of Santa Monica will have an art exhibition and contest during the day, the winning painting will be sent on to the state division of the contest. Mrs. Pawling is district art chairman.

### ARTS AND CRAFTS

Also on display during the festival will be many arts and crafts entered by the clubs of the district.

The morning program, under the direction of Mrs. J. A. Brooks of Pacific Palisades will have the following:

Light opera by the Edna Hull Group, Mar Vista Woman's Club; piano solo by Mrs. C. D. Corbin, Loyola Village Woman's Club; songs, Mrs. Chester Sheff, Woman's City Club of Venice; singing group led by Helen Moore Williams, Neptunian Club; patriotic songs

by Marina Chorus, with Mrs. Eugene Hatfield, soloist, Mrs. J. A. Brooks, director, and Anna Croft, accompanist.

### MORE PRESENTATIONS

Other presentations will be popular piano duets by Mrs. Katherine Shive, Mrs. Shirley Sanders; barbershop quartet, Pacific Palisades Woman's Club; pastel art demonstration by Ellen Bast, Hawthorne; short talk by Nina Buss, El Segundo "Meet Dewy"; original poems by Mrs. John Rourke of Santa Monica; and skit "Between 5 and 5:20" by the California Past Presidents Club.

### DUET

Also there will be a duet by Gertrude Richardson and Nita Barry of Redondo Beach; Mrs. Godfrey Nelson will read an original essay, "Between Heaven and Earth"; and Mrs. L. P. Mathews, Pacific Palisades, will read several original poems.

Following luncheon, Mrs. John Wentworth will present the entrants in the General Federation Vogue Sewing Contest. This will in-

## ECC Instructor In Television Science Series

James Campbell, El Camino College chemistry instructor, is currently appearing in a new science program, "Guidepost to Understanding Science."

In a series, which made its debut last week, Campbell presents 17 shows with Arthur Schecter, an instructor at Pasadena City College.

The half-hour shows will be viewed three times weekly, Tuesday and Thursday at 8:30 a.m. on channel 13 (KCOP), and Saturday at 8:30 a.m. on channel 5 (KTLA).

The program is produced under the auspices of the audio-visual division of the Office of the Los Angeles County Superintendent of Schools.

The "Understanding Science" series will review the basic chemical and physical concepts necessary for an understanding of modern biological principles.

The McIntyre show will continue through March 4. Gallery hours are 10 a. m. to 6 p. m. Tuesday through Saturday, 1 p. m. to 7 p. m. Sundays.

## Seascapes Shown At Co-Op Gallery

Seascapes by Howard McIntyre, widely known California artist, are currently on view in a one-man show at the Artist Co-op Gallery in Rolling Hills.

McIntyre, who has painted Pacific scenes from Oregon to Mexico in a long artistic career, is presenting recent oils in the show. The gallery's permanent collection is also open to the public.

The Artist Co-op Gallery, located on the ridge of the Palos Verdes peninsula near Crenshaw and Silver Spur Road, is operated cooperatively by 30 South Bay painters, sculptors and graphic artists. In addition to its gallery program, the group also sponsors and conducts public workshops in drawing, painting, sculpture and serigraphy for children and adults.

The McIntyre show will continue through March 4. Gallery hours are 10 a. m. to 6 p. m. Tuesday through Saturday, 1 p. m. to 7 p. m. Sundays.

Use classified. DA 5-1515

## March of Dimes Clinic Held at Sepulveda School

Torrance families who have not yet received their polio shots will be interested in the March of Dimes Polio Clinic which will be held at Sepulveda School, 4500 Merrill St., Torrance, Friday, Feb. 16, between the hours of 7 and 9 p.m.

A suggested spacing of shots: two to four weeks between first and second; four weeks between second and third. A booster should be taken each year.

Unmarried persons under 21 years of age must be accompanied by a parent or guardian or bring a signed consent slip.

No minor or adult shall be admitted to any public or private elementary or secondary school unless they have first been immunized against poliomyelitis in a manner meeting with the approval of the State Dept. of Public Health.

# "WHO'S WHO" BUSINESS INDEX

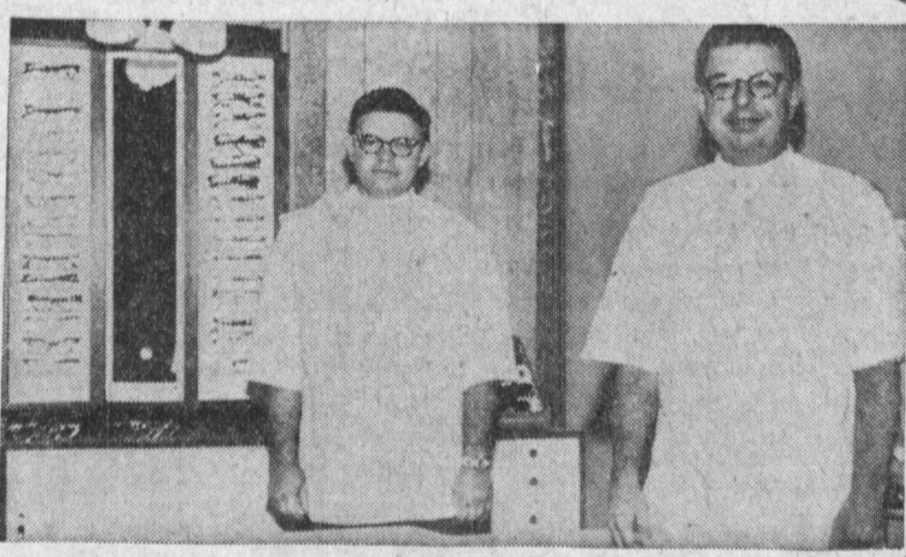


**ARCHITECTURAL DESIGNING** — And drafting for commercial development is part of the work performed by W. A. Pollock and Associates. The firm makes its headquarters at 23810 Hawthorne Blvd. in Torrance. Pollock specializes in Veteran's Administration and Federal Housing Administration subdivisions, apartment house projects and custom home designing. Pollock is a member of the Walteria Kiwanis Club and the Young Home Builder's Association. He is also a member of the American Institute of Building Design. So if you are looking for help in designing a new home, give Pollock's a thought. Telephone is FR 5-2509. Address again is 23810 Hawthorne.

**ARCHITECTURAL DESIGNING** **W. A. POLLOCK & ASSOCIATES**  
VA and FHA Subdivisions, Apartment House Projects and Custom Homes Design.  
VA and FHA Subdivisions, Apartment House Projects and Custom Homes Design.  
23810 Hawthorne Blvd., Torrance 375-2509

**BAKERIES** **RANCHO BAKERY**  
Complete Line of Bakery Goods. Specializing in Birthday, Anniversary and Wedding Cakes. Special Orders Can Be Filled in One day!  
17222 Hawthorne Blvd., Torrance 371-9593

**BEAR WHEEL ALIGNMENT SERVICE GARAGE** **HERBORN'S ALIGNMENT SERVICE**  
Official Bear Alignment Service—Brake—Balancing—Tire-Truing  
Complete Front End Rebuilding and Alignment—Free Pick-up and Delivery  
Ron Palmer — Manager  
20555 Hawthorne Blvd., Torrance FR 1-4451



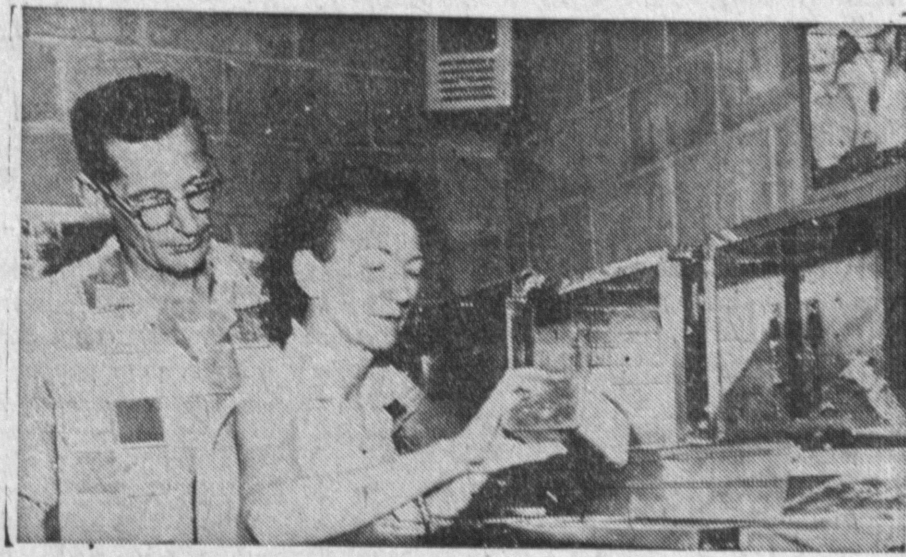
**TIRED OF YOUR OLD GLASS FRAMES?** Have you recently had your eyes examined and had a new lens prescription given you? Or have you decided you want to try contact lenses? If you have need of these services, go to South Bay Optical, located at 1712 1/2 S. Catalina Ave., Redondo Beach, and you will find friendly, expert service from the two owners, Edward Price and Clifford Valentine. The pair are dispensing opticians and take care of filling prescriptions for lenses given by eye doctors. They carry a stock of several hundred glass frames, designed to suit all tastes. In addition they fit contact lenses and carry solutions for them. They have been in the business 22 years. The Redondo store opened in August and a second store opened in October in Palos Verdes. Phone is FR 5-7660.

**OFFICE SUPPLIES** **STATE OFFICE SUPPLY**  
Complete Line of Office Machines, Photocopy and Duplicating Machines.  
Lease and Rent All Types of Machines, Office Furniture, Files and Supplies.  
24202 Crenshaw Blvd. at Lomita, Torrance DA 5-1655

**RESTAURANT** **HOUSE OF SWEDEN**  
Smorgasbord; 16 Dishes for Lunch, \$1.10. Tuesday, Wednesday, Thursday, Friday, 11:30 a.m. to 4 p.m. 25 Dishes for Dinner for \$1.65. Tuesday, Wednesday, Thursday, Friday, 4 p.m. to 9:30 p.m. Dinner from 11:30 a.m. to 9:30 p.m. Saturday and Sunday Closed Monday.  
305 Avenue "G" at Pacific Coast Hwy., Redondo Beach FR 5-0089

**GOLDEN GATE TAVERN**  
117 Bond St., Redondo Beach 374-9655  
Finest New Orleans style jazz band, every Fri. and Sat. night from 9 p.m. to 1 a.m. Across from Fisherman's Wharf. Ample parking. Open daily from 10 a.m. to 2 a.m. Closed Monday

**GEO. W. FRY, INC.**  
New and Used Trailers. Factory Distributor for Paramount, Angelus, Mayflower, Double Wide, Great Lakes, Ken-Skill, Travel-Ease, Shasta and Riviera.  
Will Take Cars, Real Estate, Etc. in Trade.  
2117 Pacific Coast Hwy., Lomita DA 6-2200



**H AND H FEED STORE**—From pigeon feed to concrete blocks is the line of equipment carried by H and H Feed Store, 2755 Arlington Ave., Torrance. Owner of the store is Roy Hutslar. The store, which has been owned by Hutslar's family for nine years, is presently undergoing remodeling, so that more service can be offered. H and H carries all types of feed for pets and gardening. Tools, fertilizers for plants and insecticides are only a few of the supplies. In addition birds, hamsters, tropical fish and goldfish are carried. The shop is open from 8 a.m. to 5:30 p.m. Monday through Saturday and from 9 a.m. until 4 p.m. Sunday. Telephone is FA 8-1714, and that address, again, is 2755 Arlington Ave., Torrance. Give H and H a call. You'll be glad you did.

**DISPENSING OPTICIANS** **SOUTH BAY OPTICAL COMPANY**  
Eye Physicians Prescriptions Filled — Lenses — Frames — Repairs — Contact Lenses Filled  
Complimentary Adjustments Made on Your Glasses.  
TWO LOCATIONS TO SERVE YOU  
EDWARD C. PRICE — Hollywood Riviera — 1712 1/2 S. Catalina Avenue FR 5-7660  
CLIFFORD C. VALENTINE — Manhattan Beach — 845 Manhattan Beach Boulevard FR 4-0485

**DRAPERIES** **MARTIN'S DRAPERIES**  
Specializing in Draperies, Bedspreads, Slip Covers, Shades and Shutters. Only Beautiful Pleat Dealer in Area. Drapery Cleaning, Hardware Removing and Installing.  
Free Estimates on Problem Windows.  
3776 Pacific Coast Hwy., Redondo Beach 375-1911

**FEED—TROPICAL FISH—PET SUPPLIES** **H & H FEED STORE**  
Concrete Block - Sand - Gravel - Cement - Garden Supplies - Birds - Hamsters - Goldfish - Tropical Fish and Supplies. Come and see our Christmas Specials. We have a Layaway Plan.  
Hours: 8:00 a.m. to 5:30 p.m.—Sunday 9 a.m. to 4 p.m.  
2755 Arlington corner Sepulveda — Torrance FA 8-1714  
Roy and Marion Hutslar — Props.