

Record Rain Brings Area Evacuation



WALTERIA TRAFFIC PROBLEM—Rising flood waters in Walteria caused, for a while, the closing of Pacific Coast Highway. In some areas water rose level with the center divider and drivers were forced to inch cau-

tiously along on their way home. Storm, which gathered Thursday, caused millions of dollars damage throughout the county, with Gardena, Redondo Beach and the general Torrance area being the hardest hit.



NORTH OF TORRANCE—Flooding of areas north and east of Torrance during the weekend rains cause evacuation of homes threatened with flooding. Some homeowners stayed and vainly attempted to keep the water

out of their living rooms by the use of sandbags and hastily shoveled dykes. County firemen and police aided evacuees in getting out of their homes, even helping stack furniture out of the reach of rising waters.

Students from Torrance High Schools on Teams

Selections of high school student-teacher teams to participate in the First International Women's Space Symposium at the Ambassador Hotel in Los Angeles Feb. 22 was announced today by Shirley Thomas, aerospace author and symposium chairman.

Representing North High School will be student Pamela Schummer, teacher Paul Hawkins, and administrator Dr. W. Bruce Wagner Jr.

Representing South High School will be student Ann Coulter, teacher Miss Carmelita Rous, and administrator Lysle Albino.

Representing Torrance High School will be student Miss Melinda Capp, teacher John S. Knapp.

They will join other students and educators from 125 Southern California senior high schools in the all-day sessions to be addressed by national space officials, women scientists, educators, pilots and aerospace industry leaders.

The symposium will spearhead a nationwide movement to encourage high school girls to enter scientific careers in the space age. Speakers will include Maxwell W. Hunter, aerospace consultant to the National Aeronautics and Space Council, A. Scott Crossfield, X-15 test pilot, Jerrie Cobb, woman astronaut trainee, and Capt. R. C. Truax, USN (Ret.) past national president of the American Rocket Society.

Torrance Employers Must File

Income tax information return forms have been mailed to all employers who filed last year or who have recently requested Forms 599 and 596, according to State Controller Alan Cranston.

Employers who paid \$1,500 or more to a single person or \$3,000 or more to a married person during 1961 are required to file a Form 599 to report such payments to the State by February 28.

Forms and information concerning them may be obtained from the Franchise Tax Board, 1025 P Street, Sacramento 14.

H. Rogers Brown Resigns Property Manager Post

County Supervisor Burton W. Chace recently announced the resignation of Marina del Rey Property Manager H. Rogers Brown, 39.

Brown, a resident of Palos Verdes Estates, said he is quitting his job "to accept a high executive position with private industry in a related field." It had been rumored that his services are being sought by one of California's major banks.

Learning of his resignation, the Board of Supervisors ordered preparation of a scroll thanking him for being a "key figure" in the development of an adequate leasing program for "the World's largest small boat harbor."

ASSISTANT

Before joining County service, Brown was an Administrative Assistant for the City of Los Angeles and for several years was the Assistant Real Estate Manager for the Port of Los Angeles.

He was prominent in the organization of the International Military Tribunal in Nuremberg, Germany in 1946, and upon leaving the service, completed his BS degree at the University of Southern California.

During the Korean War he was chief of one of the operational subsections of the Counter-intelligence Corps in Tokyo, Japan.

Use classified. DA 5-1515

CHARTERED AND SUPERVISED BY THE UNITED STATES GOVERNMENT

Marina Federal Savings
AND LOAN ASSOCIATION

R. C. CHASE
President • Chairman of the Board

WESTCHESTER OFFICE: 8750 SO. SEPULVEDA BLVD., L.A. 45, CALIF. • MAIN OFFICE • OR 0-0150 • SP 6-0290
DEL AMO OFFICE: 22200 HAWTHORNE BLVD., TORRANCE, CALIF. • FRONTIER 8-1226
SOUTH BAY OFFICE: 17008 HAWTHORNE BLVD., LAWDALE, CALIF. • 371-4613 • SP 2-4252

EARNINGS PAID QUARTERLY

Use Classified. Call DA 5-1515

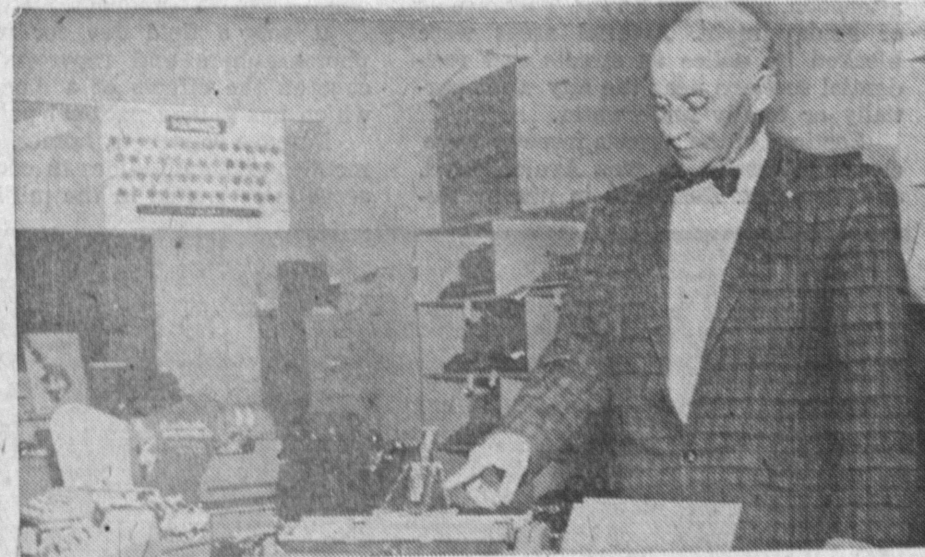
"WHO'S WHO" BUSINESS INDEX



PLANNING TO REDECORATE? — Then Martin's Drapery store, located at 3776 Pacific Coast Hwy., Torrance, is the place to visit. The store, formerly located at 1771 S. Elena, Redondo Beach, is owned by Mr. and Mrs. Martin. The shop is the only dealer in this area for Beauty-Pleat. All work is done in the work-room on the premises. Martin's stock draperies, bedspreads, shades, slipcovers, shutters and drapery hardware. In addition Martin's does cleaning of draperies. They will even remove your old draperies and install new ones. They will help you decide the best way to take care of "problem windows," which can be the most difficult part of decorating. Martin's offers free estimates on your decorating problems. Call 375-1911 for information about decorating.



WILLIAM McKANE — Owner of Rancho Bakery, located at 17222 Hawthorne Blvd., comes from a long line of bakers. He has had 42 years of experience in the bakery business. Rancho Bakery has a complete line of baked goods. A specialty is decorated cakes for birthdays, anniversaries and weddings. One day service is offered even for special orders. McKane is known far and wide for his Danish pastries. The bakery is located in Rancho Market on Hawthorne Blvd. between Redondo Beach Blvd. and 174th St., Torrance. The store is open from 9 a.m. until 10 p.m. McKane is a member of the Masonic Lodge and Odd Fellows. He has previously served the public with his baked delicacies in the Farmer's Market. Give your sweet tooth a treat and visit the bakery, or call 371-9593 to place an order.



ALL YOU COULD ASK FOR — In office equipment is available at State Office Supply, located at 24202 S. Crenshaw Blvd. at Lomita in Torrance. The company is owned by Preston L. "Ernie" Ellis, who is past president of the Rotary Club. State Office Supply is a franchise dealer for Olympia typewriters and Smith-Corona typewriters, adding machines and cash registers. In addition the store stocks Ohndner adding machines and Facit typewriters and calculators. Hermes typewriter and Addo-X adding machines are also sold. Other products include Clary, Underwood, Speed-O-Print and Nord. The last two are photocopy and duplicating supplies. State Office leases, rents and repairs all types of machines, office furniture, files and supplies. Give them a call at the store or telephone DA 5-1655 for information.

ARCHITECTURAL DESIGNING **W. A. POLLOCK & ASSOCIATES**
VA and FHA Subdivisions, Apartment House Projects and Custom Homes Design.
VA and FHA Subdivisions, Apartment House Products and Custom Homes Design.
23810 Hawthorne Blvd., Torrance 375-2509

BAKERIES **RANCHO BAKERY**
Complete Line of Bakery Goods. Specializing in Birthday, Anniversary and Wedding Cakes. Special Orders Can Be Filled in One Day!
17222 Hawthorne Blvd., Torrance 371-9593

BEAR WHEEL ALIGNMENT SERVICE GARAGE
HERBORN'S ALIGNMENT SERVICE
Official Bear Alignment Service—Brake—Balancing—Tire-Truing
Complete Front End Rebuilding and Alignment—Free Pick-up and Delivery
Ron Palmer — Manager
20555 Hawthorne Blvd., Torrance FR 1-4451

OFFICE SUPPLIES **STATE OFFICE SUPPLY**
Complete Line of Office Machines, Photocopy and Duplicating Machines.
Lease and Rent All Types of Machines, Office Furniture, Files and Supplies.
24202 Crenshaw Blvd. at Lomita, Torrance DA 5-1655

RESTAURANT **HOUSE OF SWEDEN**
Smorgasbord; 16 Dishes for Lunch, \$1.10, Tuesday, Wednesday, Thursday, Friday, 11:30 a.m. to 4 p.m. 25 Dishes for Dinner for \$1.65, Tuesday, Wednesday, Thursday, Friday, 4 p.m. to 9:30 p.m. Dinner from 11:30 a.m. to 9:30 p.m. Saturday and Sunday Closed Monday.
305 Avenue "G" at Pacific Coast Hwy., Redondo Beach FR 5-0089

GOLDEN GATE TAVERN
117 Bond St., Redondo Beach 374-9655
Finest New Orleans style jazz band, every Fri. and Sat. night from 9 p.m. to 1 a.m. Across from Fisherman's Wharf. Ample parking. Open daily from 10 a.m. to 2 a.m. Closed Monday

GEO. W. FRY, INC.
New and Used Trailers. Factory Distributor for Paramount, Angelus, Mayflower, Double Wide, Great Lakes, Ken-Skill, Travel-Ease, Shasta and Riviera.
Will Take Cars, Real Estate, Etc. in Trade.
2117 Pacific Coast Hwy., Lomita DA 6-2200

DISPENSING OPTICIANS **SOUTH BAY OPTICAL COMPANY**
Eye Physicians Prescriptions Filled — Lenses — Frames — Repairs — Contact Lenses Filled
Complimentary Adjustments Made on Your Glasses.
TWO LOCATIONS TO SERVE YOU
EDWARD C. PRICE — Hollywood Riviera — 17151 S. Catalina Avenue FR 5-7440
CLIFFORD C. VALENTINE — Manhattan Beach — 445 Manhattan Beach Boulevard FR 4-4485

DRAPERIES **MARTIN'S DRAPERIES**
Specializing in Draperies, Bedspreads, Slip Covers, Shades and Shutters. Only Beauty Pleat Dealer in Area. Drapery Cleaning, Hardware Removing and Installing. Free Estimates on Problem Windows.
3776 Pacific Coast Hwy., Redondo Beach 375-1911

FEED—TROPICAL FISH—PET SUPPLIES **H & H FEED STORE**
Concrete Block - Sand - Gravel - Cement - Garden Supplies - Birds - Hamsters - Goldfish - Tropical Fish and Supplies. Come and see our Christmas Specials. We have a Layaway Plan.
Hours: 8:00 a.m. to 5:30 p.m.—Sunday 9 a.m. to 4 p.m.
2755 Arlington corner Sepulveda — Torrance FA 8-1714
Roy and Marion Hutslar — Props.