

North High School Wins Third Scholastic Award

North High School is the University of California during the three year period, recipient of the third straight year of the award of 1958-1961, according to Richard D. Guengerich, principal, based upon the cumulative scholarship record of graduates who entered the

board of admissions and registrations based these annual awards on the first semester scholarship records of freshmen entering the University in the most recent academic year.

Frank L. Kidner, University Dean of Educational Relations stated that beginning this year however, the awards are based on cumulative three-year periods.

Accordingly the divisions in which the awards are offered have also been changed as follows: Division I, 100 or more entrants to U.C. in a three-year period; Division II, 60-99 in a three-year period; Division III, 30-59 in a three-year period; Division IV, 20-29 in a three-year period; Division V, 10-19 in a three-year period; Division VI, new schools (having had graduates for

FILM AVAILABLE

The Los Angeles Angels have available the 16 mm. color motion picture of the 1961 World Series, in which the New York Yankees defeated the Cincinnati Reds, four games to one. Also available on request is the Angels first club film, "The Los Angeles Angels Story," a 16 mm. black-and-white 22-minute production which tells the story of the Angels from their founding through their first season in the American League.

less than three years). North High School has won an award in Division IV. A certificate of merit will be presented to North High in the near future.

MAIL CONTRACTS

With the holiday season out of the way, Los Angeles Angels General Manager Fred Haney cleared the decks for action today by mailing out contracts to the 39 men on the Angels roster. In sending out the pacts,

Haney said that he "didn't expect any difficulties with any of the players. We feel that we have treated all of our men fairly and have rewarded them accordingly."

Use classified ads for quick results. DA 5-1515.



DENTURES

- IMMEDIATE DENTURES • REPAIRS, RELINES
- MAGNETIC DENTURES • DIFFICULT CASES

Extractions with Sleep
SAME LOW PRICES
(We Arrange)

Open Evenings
and Saturdays

DR. WHARTON
Member American
Academy of Dentists

No Money
Down
24 MONTHS
TO PAY

DR. WHARTON

1308 Sartori in Downtown Torrance
Above McMahon's Furniture

FA
0-0707
FOR PRICES
IN ADVANCE

NEW CAR DIRECTORY

G.M.C. TRUCKS
OLDSMOBILE - CADILLAC

CECIL L. THOMAS & SONS
PACIFIC COAST HWY. AT VERMONT—HARBOR CITY

STUDEBAKER OREGON 8-4005

Dealer Authorized by Studebaker Corporation
to Service the Torrance Area

FRANK H. AFTON CO.

240 N. MARKET, INGLEWOOD

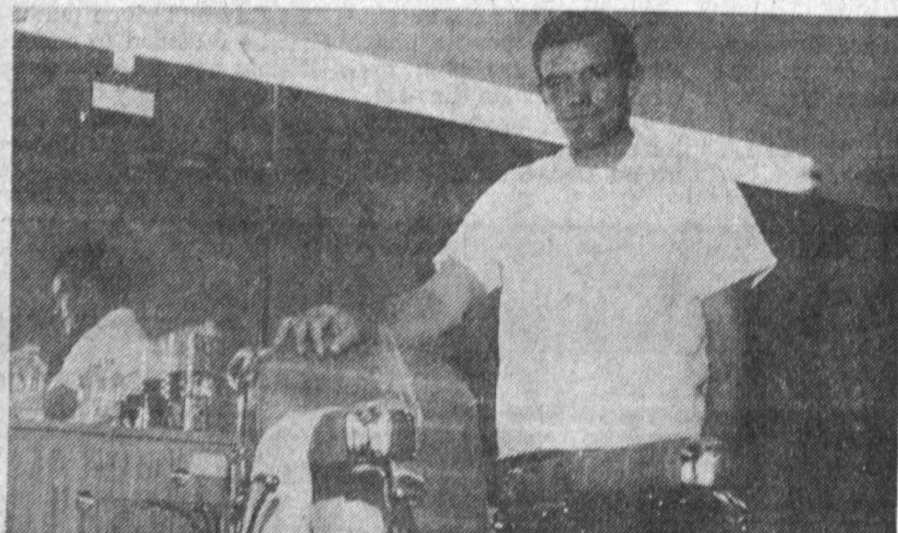
PLUSH PONY

WE
NEVER,
NEVER
CLOSE

- RESTAURANT
- COFFEE SHOP

Right in Front of the
Plush Horse Inn
1716 SOUTH PACIFIC
COAST HWY.
FR 8-8414

"WHO'S WHO" BUSINESS INDEX



SPURRED BY SUCCESS, Ellis Albertson, owner of Park Barber Shop, now with two locations recently installed the second shop at 2756 Sepulveda Blvd., Torrance. Before the opening date of his second shop two months ago, Albertson was proprietor of a Park Shop at 23645 Arlington at the intersection of 237th St. Open seven days, from 9 a.m. to 7 p.m. on weekdays and 9 a.m. to 3 p.m. on Sundays, the Park locations offer a complete barber service. Rates, lowest in town, are \$1.50 for adults and only \$1.05 for boys under 12 years of age. All cuts are \$1.50 on Saturdays and Sundays. Albertson's first shop, which was opened a year ago in March, because of expert workmanship and reduced prices, grew to have such a clientele that Albertson was encouraged to open another Park Barber Shop. Now he has two locations, 2756 Sepulveda Blvd. and 23645 Arlington, where he offers these reduced prices along with expert workmanship.



ONCE UPON A TIME there was an unhappy family. Father, Mother, Big Brother, Big Sister, Little Brother and Little Sister hadn't had any fun for a long time. There just wasn't enough money for the whole family to go out together. But one day Father said, "Come Family, I have a surprise for you." They all climbed into the family car, and Father drove them to the Harbor Drive-in Theater. At the ticket office Father gave the man just \$1.50 for the whole car full. The family saw some fine pictures which Les Wuestwald, manager and part owner of the Harbor Drive-in Theater, had chosen for families just like theirs. Your family can have fun together, too. Harbor Drive-in Theater, 2332 South Vermont, near Sepulveda, is open seven days a week. It has a 730-car capacity. All of the speakers have just been rewired. The box office opens at 6 p.m. and the show starts at 6:30 p.m. For the program, just call TE 4-8501.



EXPERIENCE AND ABILITY or equalifications which are absolutely necessary in the auto reconstruction field. The quality of work done on a car will determine its value. Pete Salmon, owner of Torrance Auto Body, 1766 W. Carson, Torrance, his shop manager, Rico, and his staff of expert metalmen and painters have years of experience as well as innate ability in the auto reconstruction field. They have been in the South Bay area for many years, but recently opened their shop in Torrance. Their new shop is modern in every detail. At their new shop, custom painting as well as complete auto reconstruction work can be completed. Both domestic and sports cars are handled with equal care and ease at Torrance Auto Body Shop. No job is too large or too small for them to handle. Torrance Auto Body is approved by leading insurance companies, so drive in for a free estimate. Loan cars are available free of charge. For fast, courteous service, go to Torrance Auto Body, 1766 W. Carson, Torrance, or call FA 8-9080 or FA 8-9081.

ARCHITECTURAL DESIGNING

W. A. POLLOCK & ASSOCIATES
VA and FHA Subdivisions, Apartment House Projects and Custom Homes Design.
VA and FHA Subdivisions, Apartment House Products and Custom Homes Design.
23810 Hawthorne Blvd., Torrance 375-2509

APPAREL—WOMEN'S

DORÉE-ANN STYLE SHOP
"Style Plus—Minus Prices." Everything in Ladies' Wear—Sports Wear, Dresses, Sweaters, Lingerie, Hosiery, Blouses, Costume Jewelry, Alterations.
2607 Pacific Coast Highway, Rolling Hills Plaza DA 5-3133

AUTO BODY REPAIR

TORRANCE AUTO BODY
Sports Car Specialists — Featuring the Finest Workmanship on All Makes
Custom Painting — Insurance Approved — Free Loan Cars
1766 W. CARSON TORRANCE FA 8-9080

BAKERIES

RANCHO BAKERY
Complete Line of Bakery Goods. Specializing in Birthday, Anniversary and Wedding Cakes. Special Orders Can Be Filled in One Day!
17222 Hawthorne Blvd., Torrance 371-9593

BARBER SHOP

PARK BARBER SHOP
Open 7 Days—"Personalized Hair Styling"—Boys Under 12, \$1.05—Adults, \$1.50
Saturday and Sunday, All Cuts \$1.50 — Two Locations
2756 Sepulveda, Torrance — 23645 Arlington, Torrance—DA 6-9877—DA 6-9833

BEAR WHEEL ALIGNMENT SERVICE GARAGE

HERBORN'S ALIGNMENT SERVICE
Official Bear Alignment Service—Brake—Balancing—Tire-Truing
Complete Front End Rebuilding and Alignment—Free Pickup and Delivery
Ron Palmer — Manager
20555 Hawthorne Blvd., Torrance FR 1-4451

CLEANER

BELFAIR DRY CLEANING SPECIALISTS
Dry Cleaning Specialists—We Specialize and Take Pride in our Quality Workmanship
of Your Finest Attire—Try Us and Be Convinced
2060 W. Carson Torrance FA 8-8041

COCKTAIL LOUNGE

SERENATA—YOUR NEIGHBORHOOD BAR
Cocktail Hour 5 p.m. to 8 p.m.—Dancing Nightly Until 2 a.m.
Your Hosts Al and Bob Close
1831 Pacific Coast Hwy.—DA 6-5503—2 Blocks West of Western Ave., Lomita

CONCRETE BLOCKS

FRED-LITE BLOCKS, INC.
Precision—Quality—Durability—Specializing Complete Line of Lightweight Precision
Concrete Building Blocks—472 Different Sizes and Shapes in Pink, Gray, Tan.
252 E. Redondo Beach Blvd., Gardena FA 1-1481 — Wholesale to Dealer

DISPENSING OPTICIANS

SOUTH BAY OPTICAL COMPANY
Eye Physicians Prescriptions Filled — Lenses — Frames — Repairs — Contact Lenses Filled
Complimentary Adjustments Made on Your Glasses.
TWO LOCATIONS TO SERVE YOU
EDWARD C. PRICE — Hollywood Riviera — 17125 S. Catalina Avenue FR 5-7666
CLIFFORD C. VALENTINE — Manhattan Beach — 645 Manhattan Beach Boulevard FR 4-0857

DRAPERIES

MARTIN'S DRAPERIES
Specializing in Draperies, Bedspreads, Slip Covers, Shades and Shutters. Only
Beautiful Dealer in Area. Drapery Cleaning, Hardware Removing and Installing.
Free Estimates on Problem Windows.
3776 Pacific Coast Hwy., Redondo Beach 375-1911

FEED—TROPICAL FISH—PET SUPPLIES

H & H FEED STORE
Concrete Block — Sand — Gravel — Cement — Garden Supplies — Birds — Hamsters —
Goldfish — Tropical Fish and Supplies. Come and see our Christmas Specials. We
have a Layaway Plan. Hours: 8:00 a.m. to 5:30 p.m.—Sunday 9 a.m. to 4 p.m.
3755 Arlington corner Sepulveda — Torrance FA 8-1714
Roy and Marion Hulsler — Props.

JEWELERS

SHEARER JEWELERS—Your Torrance Jewelers
Your Torrance Jewelers—Fine Jewelry—Watches—Diamonds—Featuring Omega,
Tissot, Elgin, Longines—Diamond Mounting and Setting—Master Watchmaker
2597 Pacific Coast Hwy., Torrance DA 5-3933

KARTS—MOTORCYCLES

HANNA CYCLE SERVICE
Go-Karts — Motorcycles — McCulloch Dealer — Repairs — Service on All Makes & Models
Small Engines Rebuilt—Open 9 a.m.-9 p.m. 7 Days a Week
1931 W. Redondo Beach Blvd., Gardena DA 3-1883

LAMPS

B'S IMPORT LAMPS
Lamps — Lamps — Lamps. We specialize in custom made lamps. Your choice of color
material, and your price range. Small collection of one of a kind antiques.
1705 1/2 S. Catalina, Redondo Beach FR 8-3093

LUMBER

LUMBER—CUSTOM MILLING
From Mill Ends to Car Loads — Fencing Material — Mouldings — Hardware — Roofing
Supply—Sash—Doors—Mahogany Cut to Size
24850 Wilmington Ave., Near Lomita Blvd. TE 4-0282

MARKET

NORLEY'S MARKET
Complete Line of Quality Meats, Groceries, Fruits & Vegetables, Beer and Wine.
Meat Cut & Wrapper for Freezers — Open 9-9 Mon. & Fri., 9-7 Tues., Wed., Thurs.
1330 El Prado Downtown Torrance FA 0-3112

MOTEL

DRIFTWOOD MOTEL—Heated Pool—Cabana
Complimentary Coffee and Paper—Kitchens—Television — Room Phones
Lounge Suites—Modern—Tropical—Adjacent to Fine Restaurant
3960 Pacific Coast Hwy., Torrance FR 5-0511

MUFFLER SHOP

CARSON MUFFLER CENTER
Custom exhaust work—All makes and Models—Foreign Cars—Free Installation
Stock and Duals — Shock Absorbers — Now Corvair Dual Exhaust Sets for '60 and '61
415 E. Carson, Torrance TE 5-9156

OFFICE SUPPLIES

STATE OFFICE SUPPLY
Complete Line of Office Machines, Photocopy and Duplicating Machines.
Lease and Rent All Types of Machines, Office Furniture, Files and Supplies.
24202 Crenshaw Blvd. at Lomita, Torrance DA 5-1655

ORGANS—PIANOS

NIKL MUSIC STUDIOS
Headquarters for Conn Organs — Gulbransen Pianos — Easy Terms — 36 Months to Pay
See Our Mile o' Music for All Makes of Organs
3820 Sepulveda, Torrance (Across from Sears) FR 5-2591

PAINT

PUNT'S PAINT CRIB
FEATURING A COMPLETE LINE OF GLIDDEN PAINT...
CUSTOM MIXED COLORS WHILE YOU WAIT
22841 South Figueroa Street, Torrance Phone TE 5-9525

PET SHOP

CARSON PET SHOP
Tropical Fish and Aquariums — Pumps — Filters — Plants — Complete Line of Pet Food
Dog Accessories—Dogs, Cats, Birds Boarded—We Cater to Amateur Hobbyists
249 E. Carson, Torrance Open 12-8 Weekday, 9-6 Saturday TE 4-2915

PLYWOOD

BOULEVARD PLYWOOD
Do It Yourself Materials — Custom Made Cabinets — Formica Counter Tops Made to
Order—Aluminum Screens—Stains & Finishes—Hardware—"We Cut to Size"
1924 W. Lomita Blvd., Lomita DA 6-1760

RADIATOR SERVICE

WALTERIA RADIATOR SERVICE
Shaw Eggers, Owner—New and Used Radiators—Cleaning—Repairing—Recoring
— Free Pickup and Delivery
24424 Hawthorne Blvd., Walteria FR 8-5085

RESTAURANT

THE COUNTRY BURGER DRIVE-IN — FOOD TO GO
Country Burgers — A Meal on a Bun! — Barbecued Sandwiches — Tacos —
Tostadas — Chili — Fried Beans — Tamales — Coffee — Cold Drinks — Shakes
Corner Torrance and Hawthorne Blvds., Torrance FR 1-9083

DIXIE CAL'S STEAK AND BAR-B-Q HOUSE

Food to Go—Special T-Bone Steak, 1.95—Bar-B-Q Dinners from 2.00
Luncheons Daily, 1.05—Open Daily 11 to 11—Open Until 2 a.m. Weekends
23814 Hawthorne Blvd., Torrance FR 8-5003

HOUSE OF SWEDEN

Smorgasbord; 16 Dishes for Lunch, \$1.10. Tuesday, Wednesday, Thursday, Friday,
11:30 a.m. to 4 p.m. 25 Dishes for Dinner for \$1.65. Tuesday, Wednesday, Thursday,
Friday, 4 p.m. to 9:30 p.m. Dinner from 11:30 a.m. to 9:30 p.m. Saturday and Sunday
Closed Monday.
305 Avenue "G" at Pacific Coast Hwy., Redondo Beach FR 5-0089

GOLDEN GATE TAVERN

117 Bond St., Redondo Beach 374-9655
Finest New Orleans style jazz band, every Fri. and Sat. night from 9 p.m. to 1 a.m.
Across from Fisherman's Wharf. Ample parking. Open daily from 10 a.m. to 2 a.m.
Closed Monday

RUG CLEANERS

BYRD RUG AND UPHOLSTERY CLEANERS
All Work Our Plant or Your Home—Our Specialty Wall-to-Wall Carpet Cleaning
Serging and Binding—Sewing and Repairing — Tinting and Dyeing
1931 W. Artesia, Gardena FR 2-5163 — DA 4-2403

SERVICE STATION

BEN BENDA CHEVRON SERVICE STATION
Brake Service—Wheel Balancing—Road Service—Towing—Tires, Tubes, Batteries
BEST BUYS IN USED CARS
21703 S. Avalon, Torrance TE 4-7420

SERVICE STATION

GEORGE PHILLIPS CHEVRON SERVICE
Service With a Smile — Tune Ups — Brake Service — Wheel Balancing — Electrical
Service — Free Pickup and Delivery.
4605 Torrance Blvd., Torrance FR 1-6901

SERVICE STATION

CRAVENS ST. RICHFIELD SERVICE
J. W. Alcock, Proprietor — One Stop Service — Tune-up — Brake — Wheel Balancing
Tire Service—Blue Chip Stamps
1529 Cravens, Downtown Torrance FA 8-9670

TELEPHONE ANSWERING SERVICE

BAY CITIES ANSWERING SERVICE
Margaret Marsha's 24-Hour Personalized Service—Business—Professional
"Let Us Be Your Choice With a Smile in Our Voice"
23912 Crenshaw Blvd., Lomita DA 5-4100

THEATERS—DRIVE-IN

HARBOR DRIVE-IN THEATER
Lee Wuestwald, Mgr.—The Place to Take the Family—\$1.50 Per Car
No Baby-Sitting Problem Here—Starts at Dusk—Open 7 Days a Week
23322 So. Vermont Ave. Vermont at Sepulveda TE 4-8501

GEO. W. FRY, INC.

New and Used Trailers. Factory Distributor for Paramount, Angelus, Mayflower,
Double Wide, Great Lakes, Ken-Skill, Travel-Ease, Shasta and Riviera.
Will Take Cars, Real Estate, Etc. in Trade.
2117 Pacific Coast Hwy., Lomita DA 6-2200

TRANSMISSIONS

CROWN TRANSMISSION EXCHANGE
Wholesale Service to garages & gas stations—Repaired, Rebuilt, Exchanged—Any
type, model or year. Complete line of new and used parts—Pickup and Delivery
1838 W. Redondo Beach Blvd., Gardena DA 3-8366