



WORSHIP AT THE CHURCH OF YOUR CHOICE

MORE THINGS ARE
WROUGHT BY PRAYER
THAN THIS WORLD
DREAMS OF

CHURCH OF CHRIST—3520 Emerald St. in Torrance. Schedule of services: Sunday 9:45 a.m. Bible Study, 10:45 a.m. Worship service, Young People's meeting 6:00 p.m. Sunday and Wednesday evening worship 7:00 p.m. Ladies Bible class 10 a.m. Wednesday. Torrance. Duane McCampbell, FR 1-0889, Office, FR 1-4000.

DEL AMO SOUTHERN BAPTIST CHURCH—317 So. Broadway Ave., Redondo Beach. (Permanent location—22th St. at Ocean, Del Amo Center) Sunday School, 9:45 a.m.; Training Union, 6 p.m.; Mid-Week Service, Thursday, 7:30 p.m.; Worship Services, 11 a.m.; 7 p.m.; Pastor Daniel B. Weaver Jr., FR 1-3925

FIRST CHURCH OF CHRIST, SCIENTIST—218th St. and Manuel Ave., Torrance. Church services—11 a.m.; Wednesday evening meetings, 8 p.m.; Sunday school, 9:15 a.m. and 11 a.m. Children under 10 years of age must be accompanied by parents or guardian for enrollment. Reading room, 1400 Cravens. Open 10 a.m. to 5 p.m. daily except Sunday and holidays; also 7 to 9 Monday and Friday evenings. All are welcome to attend our services and to use our Reading Room.

FIRST BAPTIST CHURCH—Carson at Manuel, Rev. Morgan Gates, pastor, Robt. Dahn, assistant minister. Church phone, FA 8-3030; 9:15 and 10:45 morning worship; 9:15 Nursery through 6th grade; 10:45 Jr. High through Adult Sunday School; 6:30 p.m. Training Union; 7:30 p.m. Evangelistic service; Wednesday 7:30 p.m. mid-week service. Nursery for every service.

FIRST BAPTIST CHURCH—Park and Newton Sts. in Waverly, Rev. L. P. Hustad, pastor, FR 5-1047 or DA 6-6101. Sunday school, 9:30 a.m.; Morning worship, 11 a.m. Nursery care provided for both sessions. Inspirational Gospel Hour at 7 p.m. Wednesday 7:30 p.m. Bible exposition and prayer.

FIRST LUTHERAN CHURCH—Located on Carson St. and Flower Ave. in Torrance. Wm. J. Rieder, pastor. Residence, 2550 El Dorado. Phone FA 8-3249. Church office, 1725 Flower Ave. FA 8-5884. First Church worship 8 a.m.; Sunday School, 9:45 a.m. and 9:45 a.m.; second morning worship, 10:45 a.m. Gerald Pierson, Intern.

FIRST PRESBYTERIAN CHURCH OF GARDENA—1957 W. Redondo Beach Blvd. Davis 4-1064. Rev. R. Murray Jones, minister, 1492 W. 125th St., Gardena. DA 3-1215. Sunday School—1957 Redondo Beach Blvd., 9:30 a.m. Sunday Worship—1957 Redondo Beach Blvd. 11:00 a.m. (nursery care provided). Youth Fellowship—1957 Redondo Beach Blvd. Sunday—7:00 p.m.

FOUR SQUARE CHURCH—Corner of Arlington and Sepulveda, Telephone, DA 6-2072. Rev. and Mrs. James P. Lowen, pastors. Sunday, 9:30 a.m.; Morning worship, 10:45 a.m.; group services, 6:00 p.m.; Y.P. Cadets (Defenders); Evangelistic, 7:15 p.m. Mid-week, Wednesday Bible study at 7:15 p.m. Public invited.

GREEK ORTHODOX—317 S. Broadway, Redondo Beach, Phone FR 5-8931. Divine Liturgy, 11 a.m. to 12 noon every Sunday. Rev. Nilsisto, Sunday school classes at 10:30 a.m. Greek school and Bible classes every Tuesday, Thursday, 7:30 p.m.

GREYFRIARS MEMORIAL PRESBYTERIAN CHURCH (Fundamental Orthodox) 22311 South Figueroa, Torrance. Formerly of Los Angeles. Worship hours 11 a.m. and 7 p.m. every Sunday. Sunday school beginning as usual at 9:45 a.m. Bring your children (nursery). Young People's Fellowship at 6:15 p.m. Prayer Meeting every Wednesday at 7 p.m. Dr. David Calderwood, pastor. Mr. Richard Gorman, Supr. of Sunday School. Mr. Will Power, Director of Choir. Dr. David Calderwood will preach.

IMMANUEL LUTHERAN CHURCH (Missouri Synod)—705 Knob Hill Ave., Redondo Beach, near Southwood Park, west of Hawthorne, south of Sepulveda. Sunday School, 9:45 a.m. Worship services, 8:30 and 11 a.m. Pastor A. L. Scheutz, FR 5-9335 or 5-7533.

REDONDO-TORRANCE CHURCH OF RELIGIOUS SCIENCE—Corner Prospect and Knob Hill Aves., Redondo Beach. Worship services, 9:30 a.m. and 11 a.m. Sunday school for all ages at both services. Youth group, "Trailblazers," 6:30 Sunday evening. Minister, Dr. Earl D. Barnum. Phone FR 8-4435.

10TH BAY BAPTIST CHURCH (Conservative Baptist Association), 4565 Sharvonne Lane, Torrance. C. C. Brumfield, pastor; Mr. D. W. Weikel, Director. Visitation, Church phone, FR 5-3433; 9:30 a.m. Sunday School for all ages; 10 a.m. morning worship (children's and beginners' church); 6:00 p.m. Training Union; 7 p.m. evening service. WEDNESDAY, 7:30 p.m., prayer meeting; Bible study. Nursery care for all services.

10TH BAY CHURCH OF GOD—17661 Yukon Ave. Phone FA 1-2674. Rev. C. L. Tierney, 17615 Yukon, Torrance. First morning service 8:30 a.m.; Sunday school, 9:40 a.m.; second morning service, 11:10 a.m.; Sunday night service, 7 p.m. Mid-week services, Wednesday, 7:30 p.m.

TORRANCE SEVENTH-DAY ADVENTIST—1610 Acadia Ave., Elder Glenn L. Dr. pastor. Phone: Residence, FR 5-8731; Church office, FA 8-1540. Sabbath school, 9:30 a.m.; church services, 11 a.m.; Bible study, Wednesday, 7:30 p.m.; People's meeting, Friday, 7:30 p.m.

BETTIE THOMAS STUDIOS

A SCHOOL OF MUSIC AND DANCE

Serving the South Bay for Over Twenty-five Years

NEW CLASSES FORMING NOW!

Five Lessons Children's Aptitude Classes
\$5.00 per Course

A course of sufficient scope to truly gauge your youngster's talent and capabilities.

MUSIC DANCE

An important aid in developing growing personalities.

Phone for FREE Information or Consultation with
Our School Director—FA 8-6312

1215 CRENSHAW BLVD. TORRANCE, CALIFORNIA

Use Classified Ads—Phone DA 5-1515

Pre-Registration Set for Adult School Classes

Pre-registration for Spring Semester evening classes at Gardena Adult School will begin Monday, Jan. 15, and continue daily until Jan. 26, stated William Johnston, principal. Instruction in all day and evening Spring Semester classes will start the week of Jan. 29.

The opportunity for counseling for high school and elementary diplomas, including veterans, is available Monday through Thursday evenings, 6:30 to 9:30 for all adults from Gardena and surrounding areas. The adult school office is open from 1 to 10 p.m. to accommodate those wishing to register in advance. The school is located at 1301 W. 182nd St., between Normandie and Vermont. A detailed schedule listing all day and evening Spring Semester classes will be mailed upon request by telephoning DAVIS-2-6886.

COURSES LISTED

Academic classes offered for the Spring Semester will include High School English and Mathematics, Algebra, Geometry and Trigonometry; Life Science, Physical Science and Marine Navigation; World Affairs, Public Speaking, Psychology, United States History and Government, Language classes in Spanish and Japanese will be available. Business Education classes feature Bookkeeping, Business Machines, Shorthand, Typewriting and Office Practice. Real Estate Law, Real Estate Sales, and Real Estate Appraisal 2 will be given.



READY FOR BUSINESS—The firm of Meek, Eardley and Associates this week announced the opening of their new offices at 1611 Crenshaw Blvd. John K. Eardley, standing, a member of the Torrance Planning Commission, is the civil engineer with the firm, while Harold L. Meek, seated, handles the architectural chores.

Governor Calls for Study On Supreme Court Ruling

Governor Edmund G. Brown this week called for a report from Attorney General Stanley Mosk on the Supreme Court ruling in the Carol Lane case.

"Officials in Los Angeles have raised serious questions about the impact this decision may have on local law enforcement," the Governor said.

"I have asked General Mosk to prepare a complete report as soon as possible on its implications for law enforcement throughout the State."

The court found that a Los Angeles Municipal ordinance on "resorting" is unconstitutional on the ground that State has preempted the field of legislation public morals.

The Governor said he would have no further comment on the case until he has received a report from Mosk.

Use classified ads for quick results. DA 5-1515.

Architectural Firm Opens Torrance Office

Meek, Eardley and Associates, architects and engineers, this week announced the opening of their new offices at 1611 Crenshaw Blvd.

Harold L. Meek, is the architect of the firm, while John K. Eardley, a member of the Torrance Planning Commission, will serve as civil engineer for the organization.

Eardley attended the University of Arizona and did graduate work at USC. He has served in the capacity of civil engineer with several cities and with private organizations. A resident of Torrance, he is married and has three children. In addition to his position on the planning commission, he is active in Boy Scout work, church work and Chamber of Commerce activities.

WIDE OVERHANG

Roofs with wide overhangs add beauty to a home as well as protect siding from weathering and windows from rain streaks.

CUT THE COST
of Glamour on
Our New
"Budget Days"

Mondays and Tuesdays Only

SPECIAL PERMANENT WAVE..... \$10

Hair Cut and Styling Included

MARTIN HOUSE OF BEAUTY

23649 Arlington (Corner 237th)
Phone DA 6-4290

Orville R. Foster

INTERNATIONALLY KNOWN
HAMMOND ARTIST - COMPOSER - TEACHER

**FIRST APPEARANCE
IN OUR AREA**

INFORMAL PROGRAM OF ORGAN MUSIC
AND PLAYING TIPS

ONE PERFORMANCE ONLY

RETAIL CLERKS AUDITORIUM

25949 BELLE PORTE, HARBOR CITY

SUNDAY AFTERNOON, JAN. 7, 4:00 P.M.

* Instructive and Entertaining — Your Family and Friends are Invited.
* If starting to play the organ is in your future plans — this is an IMPORTANT PROGRAM, Mr. Foster answers many questions puzzling to the beginner — There is really no mystery to organ playing as you will see.
* You will enjoy this recital no matter what type organ you may own.
* A PROGRAM FOR ALL — THOSE who just like organ music — AND THOSE who play for fun and relaxation, AFTER SHOW REFRESHMENTS.

SPECIAL FEATURE!

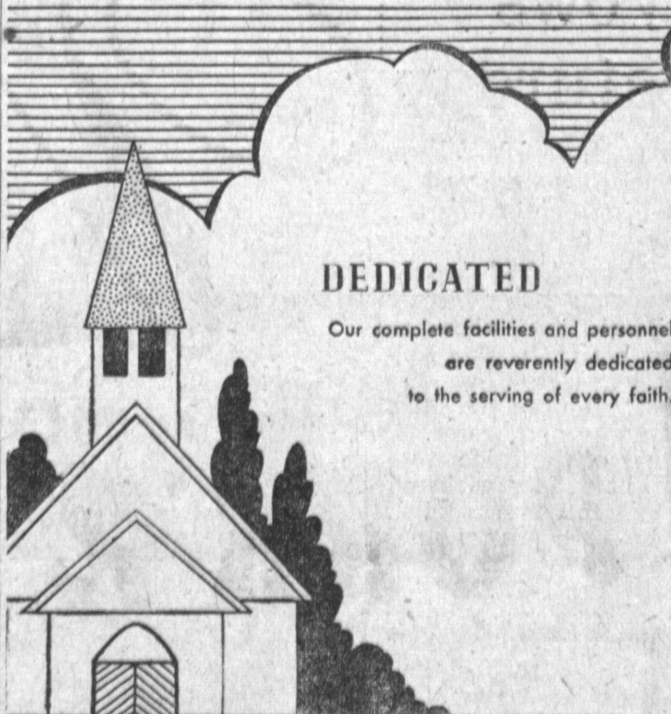
Two new HAMMOND SPINET ORGANS will be played by Mr. Foster. They are exciting new models including features that have made Hammond the world's largest selling organ.

PHONE NOW for FREE Tickets—DA 6-1131 or FA 8-6312

Hammond Organ Studios

of the South Bay—2768 Sepulveda Blvd., Torrance

A KEN CHILTON COMPANY, INC. ENTERPRISE



DEDICATED

Our complete facilities and personnel
are reverently dedicated
to the serving of every faith.

Halverson-Leavell

1223 Cravens Avenue
Downtown Torrance

Karl's SHOES

REDUCES EVERY PAIR OF SHOES IN STOCK

HERE ARE JUST A FEW OF
THE 1,000 STYLES FOR
MEN, WOMEN AND CHILDREN
TO CHOOSE FROM



PATCH STEP-IN
Sizes 4-10.

288

SPAT OXFORD
Sizes 4-10.

166

FIRST QUALITY
NYLONS
Seamless

55¢ pr.
Dress Sheers

33¢ pr.
LIMIT 3 PAIR

MEN'S SOX

3 pr. 100

BOYS' & GIRLS' SOX

3 pr. 88¢

CHILDREN'S
CONVERTIBLE STRAP PUMP
Little girl sizes 8½-3.
Infant sizes 5-8.

166

WOMEN'S, CHILDREN'S
CORDUOYS

166

MEN'S PLAIN TOE OXFORD
Goodyear welt. Sizes 6½-12.

600

Big Boys' sizes
3½-6. 5.00
Little Boys' sizes
1-3. 4.00

1281 Sartori Avenue, Torrance — FA 8-9808

5016 West 190th Street, Torrance—FR 1-9096

There are over 300 Karl's Shoe Stores in the west

JANUARY Fashion Clearance Sale

YOUR FASHION DOLLAR BUYS MORE NOW!

STARTS 10 A.M. THURSDAY, JANUARY 4

Open Friday 'til 9 p.m.

CAPRIS

Velveteen, Corduroy
and Wool.

Values
to 15.98
Now

3⁸⁷ — 5⁸⁷ — 9⁸⁷

BLOUSES
Cottons
Special Group
Values to 4.98
Now

2⁸⁷

Others Now at
3.87 4.87
5.87

Values to 10.98

SWEATERS

7⁸⁷ 8⁸⁷ 9⁸⁷ 10⁸⁷

Slipovers, Cardigan, Hooded Bulk Knits

ALL-SILK

CAPRI SETS

Flatteringly Styled in Beautiful Spring

Colors—VALUES TO 29.98

PRICED TO CLEAR AT

17⁸⁷

DRESSES, Values to 45.00

8⁸⁷ 12⁸⁷ 15⁸⁷ 19⁸⁷

Casual and After-Five Styles,
In Silk, Wool and Cotton

CAR COATS

Special Group

Values to 22.98

Now

10⁸⁷

USE YOUR BANKAMERICARD

Doree Ann Style Shop

Rolling Hills Plaza

2607 Pacific Coast Hwy, at Crenshaw, Torrance

DA 5-3133