

Torrance High Music Program At 8 p.m. Tonight

Torrance High School's Christmas program, featuring the talents of students in the music, drama, art and speech departments, will be presented at 8 p.m. this evening in the auditorium.

The program presented under the direction of Miss Bonnie Hall and Mrs. Kay Loftus features the Tartar choir and the Girls' Glee club.

Highlights of the program include the traditional Christmas songs in the spirit of Christmas, past and present. A narrative script provides continuity for the program.

"The Christmas songs, the narration and tableaux continue the tradition of fine musical programs at Christmas," Dr. Carl R. Ahee of Torrance High stated. "We hope our public will attend and support this program," Ahee concluded.

EIGHT LANGUAGES

Pamphlets on cancer in eight different languages are available without cost at your local office of the American Cancer Society.

Pleasant Garden Gives Smile to Entrance Way

Just as the gracious hostess greets her guests with a smile, so should the gardener make his entrance planting a pleasant and happy one. Be it good or bad, the approach to your home will create a lasting impression on your guests, so you'd best make it good.

Purely and simply the entrance should provide free and easy access to your front door without being bereft of plant material. Paths should be wide enough and free of overgrown shrubbery.

Trees are acceptable only if they provide head room

and don't hide the house. On the other hand, the pleasures of a arrival don't have to be visible from the street. In small gardens, an enclosed courtyard is often more appealing than a straight run from the curb. You open a gate and there before you is a hidden corner of paradise.

The California Association of Nurserymen reminds us, however, that the street side of any enclosure must be kept presentable too.

As mentioned above, trees are not for the entrance if they encroach upon the free access to the door. Trees,

however, are a real asset to the approach when they are properly used.

A low edging along the path leading to your door is most desirable. This can be a low and well trimmed bed of ivy, but you can achieve better efforts with a combination of low perennials and prostrate shrubs.

The creeping Junipers are nice at an entrance. So are such perennials as candy-

tuft or Basket-of-Gold alyssum, which create eye-catching bright spots of color.

Where the approach is along a wall, espaliered shrubs should be used unless the path is far enough from the wall to permit other shrubs.

Vines to trace an arched container shrubs such as boxwoods, dwarf conifers or ferns; flowering shrubs such as fuchsias and camellias —

Pacific Telephone Pays Record Tax

Pacific Telephone is preparing to pay a record-breaking tax bill of over \$31 million to the County of Los Angeles.

The \$31,296,529.42 property tax bill tops last year's payment by 13 per cent, R. S. Pyle Pacific Telephone's Torrance manager, said.

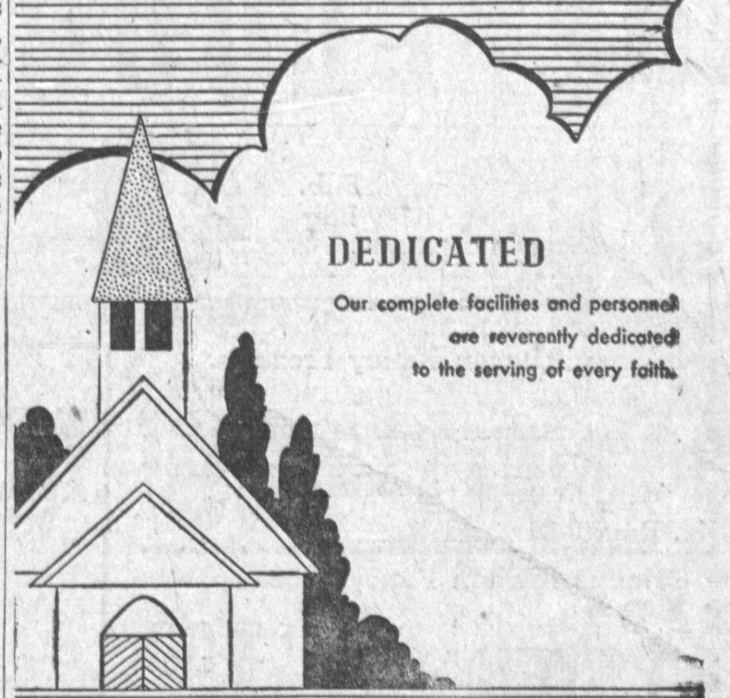
He pointed out that the figure has doubled in just five years. First installment payment of \$23,838,638.68 was made Monday. The remaining \$7,457,890.74 will be paid in the second installment next spring.

phone's Torrance manager, said.

He pointed out that the figure has doubled in just

DEDICATED

Our complete facilities and personnel are reverently dedicated to the serving of every faith.



Halverson-Leavell

1223 Cravens Avenue
Downtown Torrance

Explains Amazing Rise in Contact Lens Use

According to press reports, new-type contact lenses are taking the country by storm. Dr. J. M. Soss, optometrist at 1268 Sartori for 32 years, points out that this phenomenal surge in popularity is due to the fact that the public is realizing that perfected plastic contact lenses are a safe, economical method of correcting the vision of people in all walks of life. Because of their tiny size and almost

weightless construction, modern "contacts" can be worn comfortably for as long as 16 hours at a stretch. Dr. Soss states that those who call at his 1268 Sartori Ave. office can find out, without obligation, how easy it is to wear contact lenses. No appointment is necessary, and Dr. Soss' offices are open Friday evenings and all day Saturdays. Convenient terms. Phone FA 8-6602. Soss' offices are maintained also in Wilmington.

Hilarious Musical Entertainment
BERNIE JONES QUARTETTE
NOW in the "PORPOISE ROOM"
Enjoy dinner in our picturesque dining room.
Entertainment and Cocktails in the "Porpoise Room."
NOVEMBER 21 THROUGH DECEMBER 31
FR. 7-1547
ON THE OCEAN BETWEEN REDONDO BEACH and SAN PEDRO

MARINELAND RESTAURANT

Biggest Discounts in Town!

PRE-CHRISTMAS SALE OF BRAND NAME

CARPET REMNANTS

76 Remnants To Choose From

JUST LOOK AT THESE LOW, LOW PRICES

EASY BANK TERMS UP TO 36 MONTHS

SIZE	DESCRIPTION	COLOR	CARPET TOWN'S PRICE	SIZE	DESCRIPTION	COLOR	CARPET TOWN'S PRICE
12x6.7	Croft's Caprolan Nylon Cut-Pile	Green	\$ 39	12x10.4	Hollytex's Tycora Nylon Hi-Lo	Nutria	\$ 99
12x19	National's 100% Solution Dyed Tweed	Green	\$ 49	12x20	Callaway's Cumuloft Nylon Hi-Lo	Cocoa	\$179
12x6.8	Roxbury's Candy Stripe Wool	Multi	\$ 39	12x10.6	Berven's 100% Wool Shag	Off-White	\$119
12x20	National's 100% Nylon Tweed	Green	\$ 89	12x19	Bigelow's 100% Wool Wilton	Cocoa	\$169
15x7.3	Croft's 100% Wool Tweed	Turquoise	\$ 39	12x15.9	Leedom's 100% Wool Wilton Hi-Lo	Beige	\$ 89
12x8.4	Bigelow's 100% Wool Wilton Tweed	Green	\$ 59	12x19	World's Cotton & Rayon Tight Weave Candy Stripe		\$ 59
12x19	Berven's 100% Wool Shag	Green	\$129	7.2x14.10	Leedom's 100% Wool Wilton Hi-Lo	Beige	\$ 49
12x12.4	Hollytex's 100% Nylon Hi-Lo Tweed	Beige	\$ 79	12x10	Magee's 100% Wool Axminster Floral	Beige	\$ 89
12x7	Bigelow's Deluxe 501 Popcorn	Nutria	\$ 49	12x19	Magee's 100% Wool Axminster Floral	Beige	\$139
12x15	Bigelow's 100% Wool Block Design	Blue & Multi	\$ 89	12x16.10	Hollytex's Tycora Nylon Shadow Tweed	Cocoa	\$159
12x21.9	Doerr's 70% Wool-30% Nylon Popcorn	Beige	\$119	12x11.8	Coronet's Cumuloft Nylon Tweed	Cocoa	\$ 79
12x19	Doerr's 70% Wool-30% Nylon Popcorn	Beige	\$ 99	12x11	Bigelow's '501' Nylon Popcorn	Cocoa	\$ 99
6x19.10	Leedom's 100% Wool Carved Wilton	Green	\$ 49	12x17	Barwick's Cumuloft Nylon Hi-Lo	Blue	\$149
12x11.5	Croft's 100% Wool Hard Finish	Nutria	\$ 49	12x15	Pierce's 100% Cotton Tweed	Cocoa	\$ 59
12x6.8	Berven's 100% Hi-Lo Tweed	Beige	\$ 29	12x18.9	World's 50% Wool-50% Nylon Tweed	Beige	\$ 79
12x11.2	National's 100% Nylon Tweed	Nutria	\$ 49	9x12	Approx. (3 only) Cotton & Fiber Rugs	Grey or Cocoa	\$ 19
12x15	National's 100% Solution-Dyed Hi-Lo Tweed	Cocoa	\$ 59	12x17	World's 50% Wool, 50% Nylon Tweed	Beige	\$ 69
12x11.3	Magee's 100% Wool Knitted Tweed	Red & Cocoa	\$119	15x13.10	Coronet's 100% Cumuloft Nylon Hi-Lo	Cocoa	\$139
12x7.9	Barwick's Cumuloft Nylon Hi-Lo	Lavender	\$ 59	12x10	Pierce's 100% Cotton Hardfinish Tweed	Cocoa	\$ 39
12x7.10	Berven's 100% Nylon Hi-Lo Tweed	Nutria	\$ 39	12x13.7	Coronet's 100% Nylon Cumuloft Hi-Lo	Turquoise	\$ 89
12x17.4	Magee's 70% Wool-30% Nylon Sculpture	Champagne	\$139	12x17	World's 100% Nylon Plush Cut-Pile	Pink	\$ 99
12x6.5	Berven's 100% Nylon Popcorn	Champagne	\$ 29	12x19	Coronet's 100% Nylon Cumuloft Hi-Lo	Beige	\$129
12x19	Leedom's 100% Wool Wilton Tweed	Cocoa	\$129	12x19	National's 50% Wool, 50% Nylon	Candy Stripe	\$ 79
12x19	Bigelow's 100% Wool Wilton Hi-Lo Tweed	Cocoa	\$149	12x18	World's Cotton & Rayon Tight Weave	Candy Stripe	\$ 69
12x14	Berven's 100% Nylon Hi-Lo Tweed	Beige	\$ 69	12.7x10.2	Leedom's 100% Wool Wilton Popcorn	Martini	\$ 69
12x16	Pierce's 100% Foam Back Tweed	Earth	\$ 59	12x14.4	Coronet's 100% Nylon Cumuloft Hi-Lo	Lavender	\$ 99
12x10	Hollytex's 100% Wool Hi-Lo	Gold	\$ 69	12x19	National's 50% Wool, 50% Nylon	Candy Stripe	\$ 99
12x18.5	Doerr's 100% Wool Hi-Lo	Beige	\$ 99	12x24	Croft's 100% Wool Boucle	Off-White	\$129
15x14	Bigelow's '01' Nylon Modern Curve	Sandalwood	\$189	12x11	Bigelow's 501 Nylon Popcorn	Cocoa	\$ 99
12x11.4	Croft's 100% Wool Popcorn Tweed	Cocoa	\$ 79	12x16	Bigelow's 100% 501 Nylon Sculpture	Turquoise	\$129
12x20	Pierce's 100% Nylon Popcorn	Beige	\$109	12x13.8	World's 100% Cotton Plush Cut-Pile	Blue	\$ 69
12x14.2	Magee's 100% Wool Wilton Tweed	Black & White	\$ 99	12x11.3	National's 100% Solution Dyed Tweed	Nutria	\$ 49
12x19.8	Pierce's 100% Nylon Hard Finish	Nutria	\$109	12x23	Leedom's 100% Wool Wilton Hi-Lo	Sandalwood	\$119
12x20.10	Pierce's 100% Nylon Tweed	Green & Ch'coal	\$119	12x7.4	Coronet's 100% Cumuloft Nylon	Green	\$ 49
12x6.5	National's 100% Wool Hard Finish	Beige	\$ 29	12x13.8	Bigelow's '501' Nylon Ti-Lo Tweed	Cocoa	\$159
12x8	World's Tycora Nylon Hi-Lo	Cocoa	\$ 69	12x14	Bigelow's '501' Nylon Ti-Lo Tweed	Green	\$159
12x10.4	Callaway's Cumuloft Nylon Tweed	Beige	\$ 99	12x14	World's 100% Nylon Hi-Lo Tweed	Aqua	\$ 89
				12x8	Magee's 100% Wool Hi-Lo Wilton	Martini	\$ 69

... FROM THE FOLLOWING FAMOUS CARPET MAKERS ...



MAGEE .. BIGELOW .. PIERCE .. ROXBURY .. CALLAWAY
HOLLYTEX .. NATIONAL .. DOERR .. BERVEN .. CROFT
CORONET .. WORLD .. LEEDOM .. BARWICK

MODERAMA 9'x12' RUGS

AVAILABLE IN BEAUTIFUL DECORATOR SPACE DYED TWEED COLORS

MADE OF EASY TO CLEAN, 100% RAYON YARNS

\$39

ONLY

THICK FOAM RUBBER CUSHION

OPEN

WEEK DAYS

9 a.m. to 9 p.m.

SUNDAYS

10 a.m. to 5 p.m.

SATURDAY

9 a.m. to 6 p.m.

EARLY AMERICAN ROOM SIZE OVAL BRAIDED RUGS

WOOL 9x12 Foot Size

* Approx. Sizes

\$39

Reversible

Assorted Color Mixes
NEW ENGLAND PATTERNS

SAVE ON THESE OTHER SIZES

• 2x4-ft. \$4	• 8x10-ft. \$29
• 3x5-ft. \$6	• 10x14-ft. \$49
• 4x6-ft. \$9	• 2x9-ft. \$12
• 6x9-ft. \$19	



Del Amo Center Annex

Across from Sears and Broadway at Hawthorne Blvd.

3822 Sepulveda Blvd.

Torrance • FR. 5-0518

REMNANT RIOT!

WOOLS • NYLONS • COTTONS

Ideal for
• Halls • Autos • Baths
• Area Rugs
• Trailer Homes
Values to \$11.95

SIZES UP TO 12x5 ft.

\$ 92

Sq. Yd.

SALE Priced!