

# Realtors Open New Headquarters



**HOUSE WARMING**—Open House at the expanded facilities of the Torrance-Lomita Board of Realtors, attracted more than 200 visitors Wednesday night. In top photo, Pres. elect Jack Schmidt chats quietly with new V. P. George Hanback. Center, ladies of the Women's Division, serving as hostesses for the opening, serve refreshments. Below, hostesses show off new kitchen facilities at the board's headquarters.

More than two hundred guests and well-wishers attended the open house at the expanded and refurbished offices of the Torrance-Lomita Board of Realtors, 22833 Arlington St.

Construction work on the building, which almost doubled the available floor space, cost approximately \$48,000.

Visitors also took the opportunity to congratulate

newly elected officers to the board, to be installed December 16.

New officers, who will serve the board for the next year, are Jack Schmidt, president elect, George Han-

back, vice president elect, Fred M. Hansen, secretary elect, and Alvin Grancell, treasurer elect.

Schmidt will replace outgoing president Del Vaughn in the board's top post.

**TORRANCE**  
Refrigeration Co.  
Commercial  
&  
Domestic Service  
Torrance  
2107 237th St. FA 8-8800  
Lomita  
24339 Narbonne DA 6-6290

## palley's

**BRASS GIFT SELECTION**  
A WONDERFUL WAY TO SAY MERRY CHRISTMAS

**SILENT BUTLER (A)**

An elegant touch for the fastidious hostess... hand engraved bowl and lid... 4" diameter... walnut wood handle... No. G1127

**1.48**

**MAPLE LEAF CANDLE HOLDER (B)**

Contemporary charm in a hand engraved candle holder with carrying handle... the candle bowl rests on a lifelike brass maple leaf, 5 1/2" long. No. G1273

**1.88**

**BRASS CIGARETTE JAR (C)**

Even the choice of a cigarette can become a moment of delight when they're kept in this hand engraved brass jar, 4" high x 3" diameter. No. G1098

**1.48**

**BON BON DISH (D)**

Just imagine serving sweets in an inverted brass umbrella! Gay and attractively decorated. Removable handle, 6 1/2" diameter. 6 1/2" high. No. G1133

**1.88**

**BRASS SALT & PEPPER SHAKERS (E)**

Elegant hand engraved brass salt and pepper shakers. 3" high. Threaded tops make easy trouble-free filling possible. No. G683

**1.29 PER SET**

**FOR A WOMAN WITH TASTE...**

**KASHMIRI BRASS TABLES**

Exquisite examples of hand engraved brass... elegant exciting tables... for distinctive rooms... sure to please the most discriminating woman... oval or round with teakwood bases...

OVAL 22"x15" **19.88**

OVAL 34"x22" **27.88**

ROUND 22" **20.88**

ROUND 40" **53.88**

**BRASS TRAYS ONLY...**

Use as serving trays or wall plaques...

OVAL 22"x15" **10.88**

OVAL 34"x22" **18.88**

ROUND 22" **12.88**

ROUND 40" **44.88**

**ROUND HIBACHI**

An Oriental tete-a-tete for two... or more... glowing coals... succulent tidbits on tiny skewers... delicately broiled by delighted guests... Japanese portable cookers... a high spot on the holiday social calendar... sand cast iron with wooden base and handles... 10" diameter...

**NOW ONLY 3.88 EACH**

**BRASS ORIENTAL CHARACTERS**

Use your own ideas in creating striking and meaningful wall decorations with these brass wall plaques, or use as gifts and get the message of your good wishes over in a unique way. Height, between 8" and 9". Choose from 8 different characters... (Shown) LIFE.

**1.68 EACH**



**4 SEASON SCROLLS**

... exquisite landscape scenes... representing the Four Seasons... 4 lovely scrolls... painted in soft colors on heavy stock with white background... each scroll, 11 1/2" wide x 34" long... with gold tipped rollers for hanging. PALLEY PRICE

**1.88 SET OF 4**

**GOOD LUCK TI LOG**

Legend has it that the lush green Ti plant is a lucky charm... grow your own from this Ti Log... it sprouts an emerald green house plant to bring luck and charm to your home...

will grow to 30" ht.  
no mail orders, please

**12'**



**FOR THE COLLECTOR**

**KABUKI DOLLS**

Cultivate an ORIENTAL AWARENESS of beauty... by collecting these exquisite Kabuki Dolls authentically dressed in richly colored, fine-textured fabrics... each one portraying a different facet of Oriental life... shown are only 2 out of 18 richly costumed dolls... from which to choose...

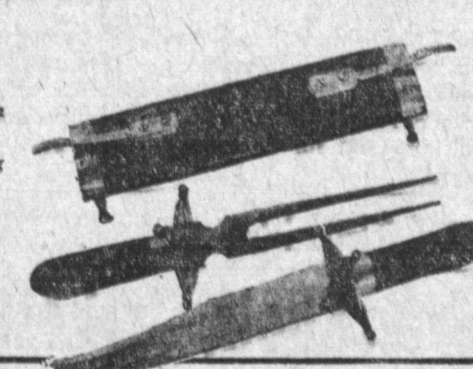
**YOUR CHOICE**

**5.88**

**INDIA CARVING SET**

A walnut and brass combination of impressive elegance, painstakingly crafted in India. Set includes 13" walnut handled carving knife, 11" walnut handled fork, 8 1/2" walnut scabbard with brass trimmings.

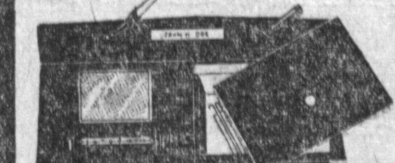
**3.88 PER SET**



**FOR THE MAN IN YOUR LIFE**  
**RADIO AND PEN DESK COMBINATION**

It's new to get the news at your desk! Catch the world series! You get a 7-transistor radio with 4 batteries and earphone... covered cigarette box... swivel pen base (pens not included). Complete combination measures 12" long, 2 1/8" high x 6 1/4" wide.

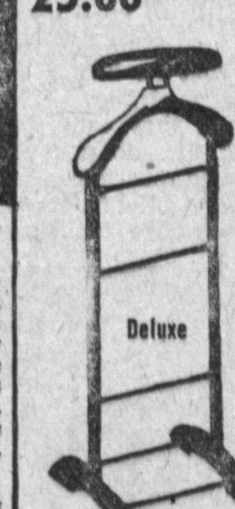
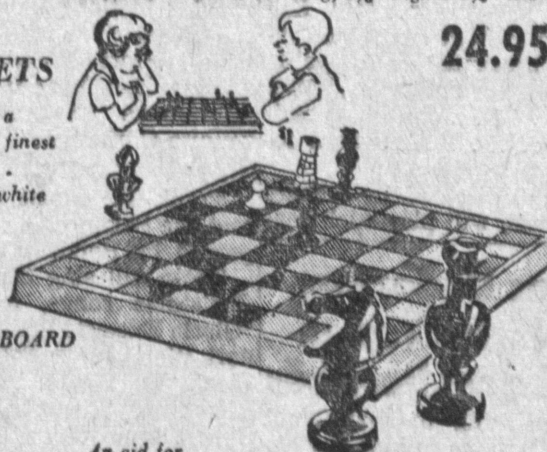
**24.95**



**ALABASTER CHESS SETS**

For collectors... or everyday use a handsome chess set... made of the finest Italian alabaster... gleaming... polished... ebony black and china white... board of inlaid black and white marble... 13 1/2" x 13 1/2"... a magnificently beautiful set for gift giving...

**25.88 COMPLETE SET WITH BOARD**



An aid for good grooming.

**HARDWOOD VALETS**

... for your home or maybe your office... space saver and sturdy... does the job silently... made of walnut smoothly rubbed... for the master bedroom... special this Christmas... in walnut... REG. \$95 VALUE

**5.88**

**GIFTS FOR THE HOME**

**GIANT BRASS PLANTER**

Only the most elegant plant will be at home in this striking brass masterpiece with its own rosewood stand. Of heirloom quality it is in the \$75.00 category in most decorator shops. No. G1196—Hammered Finish—Rosewood Stand 12" diameter x 17" high. No. G1197—Engraved Finish—Rosewood Stand 12" diameter x 17" high.

**16.88 WITH STAND**



Hammered or Engraved finish  
no mail orders, please

**4 1/2%** current rate per annum

**Paid Quarterly**

• each account insured up to \$10,000  
• funds received by the 10th of the month earn from the 1st  
• save a trip—save by mail

**Southwest Savings**  
AND LOAN ASSOCIATION

INGLEWOOD 2700 W. Manchester—at 6th Ave. Pleasant 3-2164  
TORRANCE 1603 Cravens—at Marcalina FAirfax 8-6111

**TORRANCE PRESS**

and  
**CARSON PRESS**  
W. R. Zappas, Publisher  
Established April 15, 1949  
Published Semi-Weekly, Wednesday and Sunday. Entered as second class matter Oct. 8, 1957 at Post Office, Torrance, California, under act of March 3, 1879. Adjudicated a legal newspaper by Superior Court, Los Angeles County, Calif. Adjudicated Decree No. LB-C-23368, April 9, 1958.

Subscription Rates (Payable in advance)  
Carrier Delivery... 45c per Month  
Local and Out-of-Town, per year... \$12.00  
All manuscripts submitted at owner's risk. The Torrance Press can accept no responsibility for their return.