

El Camino Schedules Annual Yule Concert

El Camino College will present two performances of its annual Christmas Concert at 8:30 p.m. December 9 and at 3:30 p.m. December 10. Admission is free.

The major work to be presented at the concert will be Antonio Vivaldi's "Gloria."

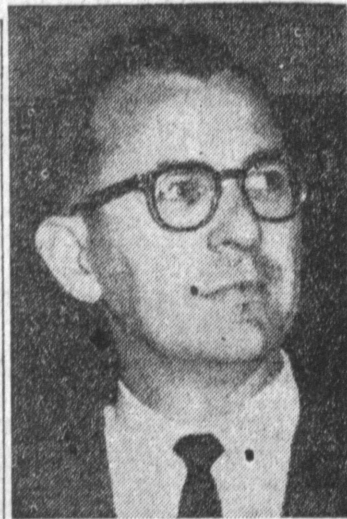
With Kay Grantham at the piano, the combined voices of the a cappella choir and the college community choir will be directed by Crist Mikkelsen at the December 9 performance and by R. Neil the following afternoon.

Soloists will be Charlotte McComas and Elinor Jackson, sopranos, and Marilyn Miller and Marilyn Nitz, altos.

CAROLS

The college community choir, directed by Mikkelsen, will present Benjamin Britten's "Ceremony of Carols." This group of carols includes such songs as "There Is No Rose," "As Dew in April," and "This Little Babe."

Britten wrote this medley of songs in 1942 but managed to give a medieval quality with his clear, vigorous and picturesque style.



CRIST MIKKELSEN
... directs college singers

The Folksingers Ensemble, under the direction of Neil Hill, will sing "Exultate Deo," "Mary, Mary, Where Is Your Baby," and "Gloucestershire Wassail."

The Women's Trio will sing "When Christ Was But A Little Child" by Tchaikovsky, and Mac Gimsey's "Sweet Little Jesus Boy" will be presented by the Men's Quartet.

Call classified, DA 5-1515.

Californians for Goldwater Set Special Meet for Tomorrow Night

A banquet will be held tomorrow at 7 p.m., at Shith Bros. Fish Shanty, 4020 Pacific Coast Highway, to honor the outgoing officers of the South Bay Chapter, Californians For Goldwater. Special honored guests of the evening will be Dr. and Mrs. Thomas Ross, daughter and son-in-law of Senator Barry Goldwater.

Retiring officers are: president, Bill Wilbur; first vice president, Phil Le Feuvre; second vice president, Jim Rea; secretary, Kristin Stevenson and treasurer, Joey Murphy. Election held at a recent meeting named officers for 1962 as: president, Bob Loft; first vice president, Bill Wilbur; second vice president, Dick Wade; secretary, Nan Reilly; and treasurer, Joey Murphy.

Following dinner a tape recording of Senator Goldwater's speech at El Camino College last August will be heard. Dinner reservations must be made immediately.

LEADS NATION

California leads the Nation in public elementary and secondary students with more than 3,500,000 enrolled. New York is second with 2,892,000.

through Mrs. Virginia Jones at DA 7-0962. Members of the organization will join with the Peninsula Men's Republican Club later in the evening to hear William Teague, vice president of Peppeddine College, speak. The public is welcome and there is no charge.

OK Agreement For Oil Pact At Harbor Park

The Los Angeles City Recreation and Park Commission last week approved a resolution prepared by the city attorney under provisions of which the recreation and park department would enter into a joint power agreement with the board of education and the department of water and power for entering into an oil lease at Harbor Park, Wilmington, and adjacent property under jurisdiction of the other two agencies. Area involved is in the 15th District.

The proposed lease would deal with Harbor Park land occupied by Harbor Junior College and land used for a department of water and power pumping plant.

County Traffic Control Officers Okay Operation of Two New Signals on Avalon in Victoria Park Area

Two new traffic control signals recently installed at two intersections on avalon boulevard in the Victoria Park area have now been tested and placed in operation, Supervisor Kenneth Hahn reported this week.

The new signals were installed at Supervisor Hahn's request to provide maximum traffic safety in the vicinity of the Towne avenue

school and to provide a smoother, safer flow of traffic on Avalon.

The new signals were installed at 189th and 190th streets.

Installed along with the signals were new highway safety lights, using powerful mercury vapor lamps.

Supervisor Hahn said the new signals are of the semi-

actuated type and are coordinated with each other.

The signals at 190th have been provided with "Walk-Don't Walk" indicators for the protection of school child pedestrians. Crossing of Avalon at 189th will be prohibited.

Supervisor Hahn urged that all children who have to cross the intersection on

190th and Avalon use the pushbutton controls on the signals and wait for the green "walk" sign before proceeding.

The new signals were provided in accordance with Supervisor Hahn's policy of improving traffic safety throughout his district, particularly in the vicinity of schools.

PURCHASING DOLLAR

When mom shops in the grocery store, how does her purchasing dollar break down? 28 per cent goes for meats, 23 per cent for fruits and vegetables, 10 per cent for dairy foods, 16 per cent for bakery and cereal products, 8 per cent for poultry and eggs, and 8 per cent miscellaneous.

VOTERS APATHETIC

Less than two out of five U.S. voters showed sufficient interest in school bond and tax elections to go to the polls and vote during the 12 years prior to 1960, a Stanford University survey revealed.

Use classified, DA 5-1515

Hilarious Musical Entertainment
BERNIE JONES QUARTETTE
NOW in the "PORPOISE ROOM"
Enjoy dinner in our picturesque dining room.
Entertainment and Cocktails in the "Porpoise Room."
NOVEMBER 21 THROUGH DECEMBER 31
FR. 7-1547
ON THE OCEAN BETWEEN REDONDO BEACH and SAN PEDRO

Ready for Final Drive in Current Chest Campaign

Community Chest volunteers in Torrance are bracing for a final effort to reach their goal as the city's campaign nears an end.

William B. Jameson, city chairman, said today the city is nearing its goal, too, but to close the gap to reach its quota is most difficult.

"If only those who have not been asked to give could mail \$1 to Chest Headquarters, 200 E. Anaheim, Wilmington, we would reach our quota, meeting our community responsibility also," Jameson said.

To date Torrance has raised \$23,333 or nearly 90 per cent of its quota in the drive.

The combined total for the Harbor Area cities now stands at \$8,299 per cent of the \$10,770 goal set for the area.

HEN OUTPUT

In the past 25 years, the hen has increased her output from an average of 118 to 200 eggs per year; many hens now produce 300 and more.

BOWLING
AT ITS BEST
AT THE BEST
GABLE HOUSE BOWL
FR 8-2265
★ ★ ★ ★
Special Events

MONDAY LADIES' DAY

SATURDAY MOONLIGHT BOWL

SUNDAY 7 A.M. - 11 A.M.
RENT LANE
Per Hour \$1.00
No Limit to Number of Persons

Open Bowling EVERY NIGHT
CALL FOR RESERVATIONS
ENTERTAINMENT in the
RIK-SHA ROOM
Darius and Johnson
Dancing Instructors
Dancing Lessons
Free Baby Sitting
Great Food

GABLE HOUSE
22501 Hawthorne Blvd.
at Sepulveda
Across from Sears
For Info., Call FR 8-2265



PUT MORE EARNING POWER IN YOUR SAVINGS AT GLENDALE FEDERAL!

When your automobile goes out of style, loses its power, you trade it in on a newer model. Like an automobile, a savings account can go out of style, too. Yours is out of style if it is only earning 3% a year. Now is the time to trade it in for a high-earning savings account at Glendale Federal.

YOU WON'T LOSE A PENNY OF CURRENT EARNINGS! Glendale Federal Savings will take care of all the details of transferring your account. Let our New Accounts Department make arrangements right now to put more earning power in your insured savings — and you won't lose a penny of current earnings!

And... you save with safety. Savings accounts are insured to \$10,000 by the Federal Savings and Loan Insurance Corporation, a permanent agency of the United States Government.

Don't put it off. Trade in your old-style 3% account at any one of Glendale Federal's eleven convenient offices. Trade up to a more profitable, more powerful insured savings account, today.

SAN PEDRO OFFICE
556 West Ninth Street
Terminal 2-5321

DEL AMO OFFICE
3832 Sepulveda Boulevard
Frontier 8-8351

Accounts opened by the 10th of any month earn from the 1st.



OFFICES IN: ARCADIA, 100 S. First Ave. • CANOGA PARK, 22021 Sherman Way • DEL AMO, 3832 Sepulveda Blvd. • EL MONTE, 112 W. Valley Blvd. • FULLERTON, 320 N. Harbor Blvd. • GLENDALE, 401 N. Brand Blvd. • MONTROSE, 2350 Honolulu Ave. • PACIFIC PALISADES, 15215 Sunset Blvd. • SAN PEDRO, 556 W. Ninth St. • STUDIO CITY, 12191 Ventura Blvd. • WESTWOOD VILLAGE, 1090 Westwood Blvd.

Current annual rate
Earnings Paid 4 Times A Year
A \$400 Million Savings Institution