



SANTA CLAUS (Jim Evans) and Sharon Wiley, who has been selected queen of the first annual Santa's Wonderland—to be held through Dec. 24 at Pan Pacific Auditorium—look over some of the models of Santa's Workshop and the North Pole, which will be among the colorful displays at the forthcoming month-long Holiday Gift Mart.

Toastmistress Tells Men Women Judge Speaking

"Women are excellent judges of male speakers," Helen Anderson of Hawthorne said in a talk presented at a recent meeting of South Bay Toastmasters Club 280, held at Redondo Beach Elks Club.

Miss Anderson cautioned all male audience that women judge men speakers by four basic impressions.

These are: physical appearance, the voice, the language they use, and their ability to hold the interest of their listeners.

The unusual interest displayed by guests attending the course on "Effective Speaking and Presentation," now being held each Wednesday evening at 6:45 p.m. prompted President Thomas Eadie to announce an added attraction which will feature a talk on "Overcoming Your Fear of The Audience."

James McDonald, a resident of Manhattan Beach,

has been selected to speak on this subject.

Fred Strible of Manhattan Beach won the formal speech session with a talk on "Is Pressure Our Heritage." Second place went to Don Edwards of Redondo Beach for his speech on "More Money and More For It."

Explains Amazing Rise in Contact Lens Use

According to press reports, new-type contact lenses are taking the country by storm. Dr. J. M. Soss, optometrist at 1268 Sartori for 32 years, points out that this phenomenal surge in popularity is due to the fact that the public is realizing that perfect plastic contact lenses are a safe, economical method of correcting the vision of people in all walks of life. Because of their tiny size and almost

KTTV Televises Thurmond Talk

"We Shall Not Be Buried" is the title of a speech by Sen. J. Strom Thurmond (D.S.C.) which will be televised live by KTTV, Channel 11, Thursday from 7:30 to 8:30 p.m.

The program will come from the Paladium.

Wednesday evening KTTV will broadcast the Blades game from San Francisco.

FACTORY OUTLET!

Women's Sportswear

at WHOLESALE PRICES

● CAR COATS

● KUKI COATS

Laminated Orlon Knit Jackets

Smart Vinyls

All Washable

SECONDS ALSO AVAILABLE

1842 West 169th Street, Gardena

1/2 Block West of Western

Open 7 Days a Week 10 a.m. to 4 p.m.



ROUND STEAK

U.S.D.A. GOVERNMENT GRADE "CHOICE" or Food Giant's Banquet Perfect. Sauté this beauty with onion and butter. Add can of tomato sauce, season and simmer until tender. Serve with noodles and fresh green vegetables. Don't forget hot rolls!

73^c lb.

7-BONE ROAST

The best cut for pot-roast. For a new delicious way to serve, try potato pancakes and applesauce. Make sure you have plenty of hot herbs on hand. U.S.D.A. GOVERNMENT GRADE "CHOICE" or Food Giant's Banquet Perfect.

43^c lb.

RIB ROAST

3rd, 4th, 5th RIB U.S.D.A. GOVERNMENT GRADE "CHOICE" or Food Giant's Banquet Perfect. The standing rib roast is the epitome of roasts. Just insert a clove of garlic, salt and pepper to taste and make sure the carver in your family has a very sharp knife!

79^c lb.

SIRLOIN-TIP ROAST

BONELESS You can almost smell the rich aroma of perfect beef roasting in your oven when you look at these. You'll have leftovers for hot or cold sandwiches the next day. U.S.D.A. GOVERNMENT GRADE "CHOICE" or Food Giant's Banquet Perfect.

89^c lb.

CROSS RIB ROAST

BONELESS U.S.D.A. GOVERNMENT GRADE "CHOICE" or Food Giant's Banquet Perfect. An even roast waiting for your oven. Try adding a cup of water to your roasting pan, cover and cook in very low oven (200 degrees). You can Christmas shop all afternoon, and dinner will be ready!

69^c lb.

RUMP ROAST

U.S.D.A. GOVERNMENT GRADE "CHOICE" or Food Giant's Banquet Perfect. Call for a clove of garlic, seasoning and a nice warm oven. Add your potatoes about an hour before serving. Drummings will make savory gravy for sandwiches the next day.

73^c lb.

WE GUARANTEE YOUR EVERY BITE!!

Those big, juicy, tender, succulent cuts of beef you see in your Food Giant Market were personally selected for you. Our meat director, a very particular man, looks for three things—quality, age and marbling. He selects only young, well-marbled steers. Marbling (those little white lines that appear on the side of beef) tells the story. When the beef is well-marbled, it's the finest grain-fed and the best quality you can find!! If you don't get that satisfied glow of a happy, well-fed person after you've tasted our beef—bring it right back! — Your money will be refunded if you are not completely satisfied!

RIB STEAK

Rib steaks like these juicy ones require little frying time. U.S.D.A. GOVERNMENT GRADE "CHOICE" or Food Giant's Banquet Perfect.

89^c lb.

SWISS STEAK

Here's a steak that's easy to fix and mix with noodles. U.S.D.A. GOVERNMENT GRADE "CHOICE" or Food Giant's Banquet Perfect.

73^c lb.

CHUCK STEAK

U.S.D.A. GOVERNMENT GRADE "CHOICE" or Food Giant's Banquet Perfect. Rich, tender steaks like these beg to be braised.

59^c lb.

RUMP ROAST

BONELESS. This beautiful beef was raised to please. U.S.D.A. GOVERNMENT GRADE "CHOICE" or Food Giant's Banquet Perfect.

89^c lb.

CLUB STEAK

When you serve steaks and French fries, be sure the steaks you serve are these. U.S.D.A. GOVERNMENT GRADE "CHOICE" or Food Giant's Banquet Perfect.

98^c lb.

T-BONE STEAK

U.S.D.A. GOVERNMENT GRADE "CHOICE" or Food Giant's Banquet Perfect. Dining, rare or well done, broiled or barbecued.

1⁰⁹ lb.

PORTERHOUSE

U.S.D.A. GOVERNMENT GRADE "CHOICE" or Food Giant's Banquet Perfect. Big, beautiful, thick steaks melt in your mouth.

1¹⁹ lb.

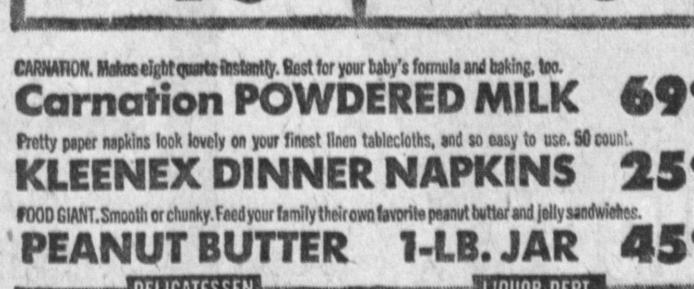
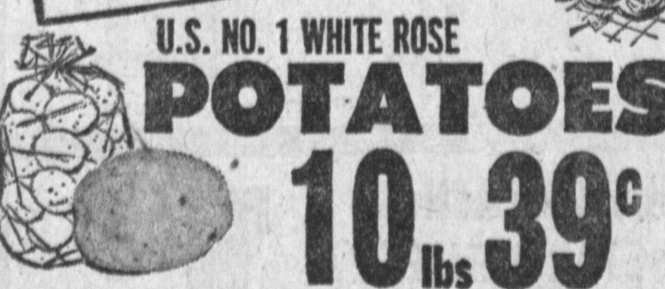
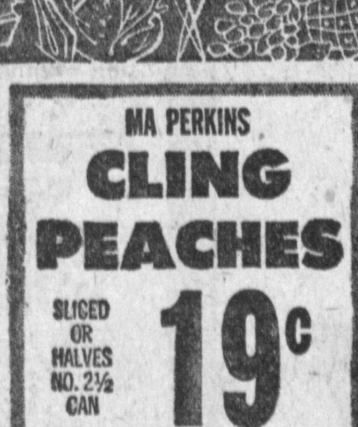
TOP SIRLOIN

BONELESS Here's a family steak. Perfect for broiling or barbecuing. U.S.D.A. GOVERNMENT GRADE "CHOICE" or Food Giant's Banquet Perfect.

1³⁹ lb.

FRESH LARGE GRADE "AA" EGGS

39^c ONE DOZ.



4 GIANT SALE DAYS, THURS.-SUN., NOVEMBER 30, DECEMBER 1-3



TWO KINDS OF RUG DIRT NEED TWO KINDS OF RUG CLEANING!

ONLY SPENCER'S EXCLUSIVE DOUBLE DEPTH CLEANING REMOVES BOTH KINDS!

Surface dirt that dulls rug beauty — Thorough dust-cleaning removes the dull gray film of surface dirt that hides rug beauty.

Ground-in dirt that shortens rug life — Particles of grit and grime — far below the surface of your rug — cut rug fibers and shorten rug life. Deep shampooing floats away these harmful particles.

Only exclusive DOUBLE DEPTH CLEANING gives rugs new beauty... gives rugs longer life!

CALL TODAY FOR FREE PICK-UP AND DELIVERY OR FOR DOUBLE DEPTH CLEANING OF WALL-TO-WALL CARPETS IN YOUR HOME.



Spencer's RUG CLEANERS

Priorities 1-4671 • 20625 HAWTHORNE BLVD., TORRANCE

SWEET, JUICY COMICE

PEARS 10^c lb.

EXTRA FANCY WASHINGTON WINESAP

APPLES 4 lb. 49^c bag



In SAN PEDRO 28849 Western Ave.
In NO. TORRANCE 4848 W. 190th at Anza

In GARDENA 14990 Crenshaw Blvd.
In HAWTHORNE 423 So. Hawthorne Blvd.

In MANHATTAN BEACH 2400 Sepulveda Blvd. at Main
In TORRANCE 3731 Pacific Coast Hwy.