

## Security Bank Discloses Changes in Management

Directors of Security First National Bank recently made major changes in the bank's management following announcements by James E. Shelton, chairman of the board, and Chester A. Rude, vice chairman of the board, of their intended retirements Jan. 31.

At the meeting of the bank's board, Shelton was named senior board chairman, with the expectation that in continuing as a member of the board after Jan. 31 he will then be designated chairman emeritus, and continue to serve as a member of the bank's Executive Committee and chairman of its Trust Committee.

Rude continues as vice chairman of the board through January, 1962, when, on retirement, he expects to continue as a member of both the bank's board and its Executive Committee.

**AUSTIN ELECTED**  
Lloyd L. Austin was elected chairman of the board.

He continues as chief executive officer of the bank, and chairman of the Managing Committee.

For the past six years, Austin has served the bank as its president.

Frederick G. Larkin Jr., was elected president and a member of the bank's Managing Committee. Larkin was formerly a senior vice president of the bank.

William E. Siegel was elected executive vice president-Banking, a newly created title, and was appointed a member of the bank's Managing Committee.

Edwin H. Corbin was elected executive vice president-trust, also a new designation.

He has recently headed and will continue in charge of the bank's Trust Department. Corbin, too, joins the Managing Committee.

Oscar T. Lawler, a senior vice president, was added to the bank's Managing Committee.

**MANAGING GROUP**  
These seven officers, along with Elden Smith, chairman of the Executive Committee, and Edmund F. Schnieders, senior vice president, presently constitute the Managing Committee.



**OUR TOWN**—Will be presented by Torrance High School seniors. Thornton Wilder's play, which uses only bare essentials for stage decorations, includes Ron Kling,

Beverly Anderson and Marvin King (left to right) in the cast. In background is Jerry Roberts, student director.

—Press Photo

## Torrance High Seniors Present 'Our Town'

Rehearsals are underway for Torrance High's senior class production of "Our Town," by Thornton Wilder.

Play will be presented in Torrance High auditorium Dec. 1 and 2 at 8 p.m. Tickets are 50 cents for students and \$1 for adults.

Directed by Vernon Ashbrook, the play is done on a bare stage with a minimum of props. The period in which it takes place is 1900-1906.

For the first time, a scrim curtain will be used in the show. A scrim is a gauze curtain that appears solid when light is not behind it, but when light is behind it, becomes transparent.

In the role of the stage manager is Jerry Roberts. Carol Echols portrays Emily Webb, and Marvin King is George Gibbs.

Other members of the cast: are Dave Mullen, Ron Heller, Larry Kulp, Carol Porterfield, Beverly Anderson, Jimmie Ruth Lawrence, Jeffrey Carpenter, Ron Kling, Tim May, Carol Steenbock, Eugene Denny, Richard Rayls, Larry Gibson,

## Kerr Constructs Fairings For Army Advent Project

Kerr Products division of Space Equipment Corporation, Torrance, has completed successful fabrication of large plastic structural fairings for Project Advent, the Army's synchronous communications repeater satellite.

The unit is a five foot long truncated cone, tapering from 85 inches at one end to 35 inches at the other.

Fabrication begins with fiberglass cloth impregnated with phenolic resin, patterned into a female mandrel.

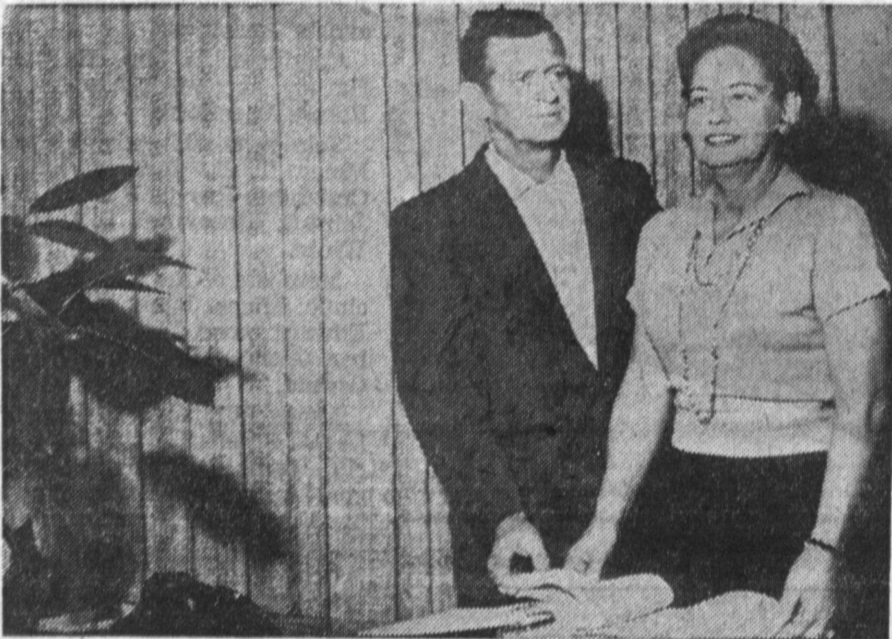
A vacuum bag is placed over the layup and mandrel and cured in an autoclave maintained at 100 psi. and at temperatures up to 330 deg. for eight hours.

After curing three hat section rings are bonded, with high temperature epoxy adhesive to the autoclaved shell and heat cured in an oven at 300 deg.

The purpose of the Advent program is to provide research and development data on the feasibility of a military microwave communication satellite system.

Advent satellites will ultimately orbit the earth once daily at a synchronous altitude and will appear to remain stationary in space.

# "WHO'S WHO" BUSINESS INDEX



**PLANNING TO REDECORATE?**—Then Martin's Drapery store, located at 3776 Pacific Coast Highway, Waverly, is the place to visit. The store, formerly located at 1771 S. Elena, Redondo Beach, is owned by Mr. and Mrs. Martin. The shop is the only dealer in this area for Beauti-Plat. All work is done in the work room on the premises. Martin's stock draperies, bedspreads, shades, slipcovers, shutters, and drapery hardware. In addition Martin's does cleaning of draperies. They will even remove your old draperies and install new ones. They will help you decide the best way to take care of "problem windows," which can be the most difficult part of decorating. Martin's offers free estimates on your decorating problems. Call 375-1911 for information about decorating.



**WILLIAM McKANE**—Owner of Rancho Bakery, located at 17222 Hawthorne Blvd., comes from a long line of bakers. He has 42 years of experience in the bakery business. Rancho Bakery has a complete line of baked goods. A specialty is decorated cakes for birthdays, anniversaries and weddings. One day service is offered even for special orders. McKane is known far and wide for his Danish pastries. The bakery is located in Rancho Market on Hawthorne Blvd. between Redondo Beach Boulevard and 174th St., Torrance. The store is open from 9 a.m. until 10 p.m. McKane is a member of the Masonic Lodge and Odd Fellows. He has previously served the public with his baked delicacies in the Farmers' Market. Give your sweet tooth a treat and visit the bakery, or call 371-9593 to place an order.



**ARCHITECTURAL DESIGNING**—And drafting for commercial development is part of the work performed by W. A. Pollock and Associates. The firm makes its headquarters at 23810 Hawthorne Blvd. in Torrance. Pollock specializes in Veteran's Administration and Federal Housing Administration subdivisions, apartment house projects and custom home designing. Pollock is a member of the Walteria Kiwanis Club and the Young Home Builder's Association. He is also a member of the American Institute of Building Design. So if you are looking for help in designing a new home, give Pollock's a thought. Telephone 5-FR-2509. Address again is 23810 Hawthorne.

**ARCHITECTURAL DESIGNING** **W. A. POLLOCK & ASSOCIATES**  
VA and FHA Subdivisions, Apartment House Projects and Custom Homes Design. VA and FHA Subdivisions, Apartment House Projects and Custom Homes Design. 23810 Hawthorne Blvd., Torrance 375-2509

**APPAREL—WOMEN'S** **DORR-ANN STYLE SHOP**  
"Style Plus—Minus Prices." Everything in Ladies' Wear—Sports Wear, Dresses, Sweaters, Lingerie, Hosiery, Blouses. Costume Jewelry. Alterations. 2607 Pacific Coast Highway, Rolling Hills Plaza DA 5-3133

**AUTO BODY REPAIR** **TORRANCE AUTO BODY**  
Sports Car Specialists — Featuring the Finest Workmanship on All Makes. Custom Painting — Insurance Approved — Free Loan Cars 1766 W. CARSON TORRANCE FA 8-9080

**BAKERIES** **RANCHO BAKERY**  
Complete Line of Bakery Goods. Specializing in Birthday, Anniversary and Wedding Cakes. Special Orders Can Be Filled in One Day! 17222 Hawthorne Blvd., Torrance 371-9593

**BARBER SHOP** **PARK BARBER SHOP**  
Open 7 Days—"Personalized Hair Styling"—Boys Under 12, \$1.05—Adults, \$1.50 Saturday and Sunday, All Cuts \$1.50 — Two Locations 2756 Sepulveda, Torrance — 23645 Arlington, Torrance—DA 6-9877—DA 6-9833

**BEAR WHEEL ALIGNMENT SERVICE GARAGE**  
**HERBORN'S ALIGNMENT SERVICE**  
Official Bear Alignment Service—Brake—Balancing—Tire-Truing Complete Front End Rebuilding and Alignment—Free Pick-up and Delivery Ron Palmer — Manager 20555 Hawthorne Blvd., Torrance FR 1-4451

**BOATS** **FRED & KEN SPORTING GOODS**  
Boat Center for the Harbor Area—Featuring FIBER GLASS BOATS Sales—Service—Parts—Complete Line of Marine Hardware and Accessories 824 W. PACIFIC COAST HIGHWAY, WILMINGTON TE 4-2350

**CLEANER** **BELFAIR DRY CLEANING SPECIALISTS**  
Dry Cleaning Specialists—We Specialize and Take Pride in our Quality Workmanship of Your Finest Attire—Try Us and Be Convinced 2060 W. Carson Torrance FA 8-8041

**COCKTAIL LOUNGE**  
**SERENATA—YOUR NEIGHBORHOOD BAR**  
Cocktail Hour 5 p.m. to 8 p.m.—Dancing Nightly Until 2 a.m. Your Hosts Al and Bob Close 1831 Pacific Coast Hwy.—DA 6-5503—2 Blocks West of Western Ave., Lomita

**CONCRETE BLOCKS** **FRED-LITE BLOCKS, INC.**  
Precision—Quality—Durability—Specializing Complete Line of Lightweight Precision Concrete Building Blocks—472 Different Sizes and Shapes in Pink, Gray, Tan. 252 E. Redondo Beach Blvd., Gardena FA 1-1481 — Wholesale to Dealer

**DISPENSING OPTICIANS** **SOUTH BAY OPTICAL COMPANY**  
Eye Physicians Prescriptions Filled — Lenses — Frames — Repairs — Contact Lenses Filled Complimentary Adjustments Made on Your Glasses. TWO LOCATIONS TO SERVE YOU 5040 C. PRICE — Hollywood Blvd. — 17125 S. Catalina Avenue FR 5-7448 CLIFFORD C. VALENTINE — Manhattan Beach — 845 Manhattan Beach Boulevard FR 4-0485

**DRAPERIES** **MARTIN'S DRAPERIES**  
Specializing in Draperies, Bedspreads, Slip Covers, Shades and Shutters. Only Beauti-Plat Dealer in Area. Drapery Cleaning, Hardware Removing and Installing. Free Estimates on Problem Windows. 776 Pacific Coast Hwy., Redondo Beach 375-1911

**FEED—TROPICAL FISH—PET SUPPLIES**  
**H & H FEED STORE**  
Concrete Block — Sand — Gravel — Cement — Garden Supplies — Birds — Hamsters — Goldfish — Tropical Fish and Supplies. Come and see our Christmas Specials. We have a Laysaw Plan. Hours: 9:00 a.m. to 5:30 p.m.—Sunday 9 a.m. to 4 p.m. 755 Arlington corner Sepulveda — Torrance FA 8-1714

**JEWELERS** **SHEARER JEWELERS—Your Torrance Jewelers**  
Your Torrance Jewelers—Fine Jewelry—Watches—Diamonds—Featuring Omega, Tissot, Elgin, Longines—Diamond Mounting and Setting—Master Watchmaker. 2597 Pacific Coast Hwy., Torrance DA 5-3933

**KARTS—MOTORCYCLES** **HANNA CYCLE SERVICE**  
Go-Karts — Motorcycles — McCulloch Dealer — Repairs — Service on All Makes & Models Small Engines Rebuilt—Open 9 a.m.-9 p.m. 7 Days a Week 1931 W. Redondo Beach Blvd., Gardena DA 3-1883

**LAMPS** **B'S IMPORT LAMPS**  
Lamps — Lamps — Lamps. We specialize in custom made lamps. Your choice of color material, and your price range. Small collection of one of a kind antiques. 1705 1/2 S. Catalina, Redondo Beach FR 8-3093

**LUMBER** **LUMBER—CUSTOM MILLING**  
From Mill Ends to Car Loads — Fencing Material — Mouldings — Hardware — Roofing Supply—Sash—Doors—Mahogany Cut to Size 24850 Wilmington Ave., Near Lomita Blvd. TE 4-0282

**MARKET** **NORLEY'S MARKET**  
Complete Line of Quality Meats, Groceries, Fruits & Vegetables, Beer and Wine. Meat Cut & Wrapped for Freezers — Open 9-9 Mon. & Fri., 9-7 Tues., Wed., Thurs. 1330 El Prado DowntownTorrance FA 0-3112

**MOTEL** **DRIFTWOOD MOTEL—Heated Pool—Cabana**  
Complimentary Coffee and Paper—Kitchenttes — Television — Room Phones Lounge Suites—Modern—Tropical—Adjacent to Fine Restaurant 3960 Pacific Coast Hwy., Torrance FR 5-0511

**MUFFLER SHOP** **CARSON MUFFLER CENTER**  
Custom exhaust work—All makes and Models—Foreign Cars—Free Installation Stock and Duals — Shock Absorbers — Now Corvair Dual Exhaust Sets for '60 and '61 415 E. Carson, Torrance TE 5-9156

**OFFICE SUPPLIES** **STATE OFFICE SUPPLY**  
Complete Line of Office Machines, Photocopy and Duplicating Machines. Lease and Rent All Types of Machines, Office Furniture, Files and Supplies. 24202 Crenshaw Blvd. at Lomita, Torrance DA 5-1655

**ORGANS—PIANOS** **NIKL MUSIC STUDIOS**  
Headquarters for Conn Organs — Gulbransen Pianos — Easy Terms — 36 Months to Pay See Our Mile o' Music for All Makes of Organs 3820 Sepulveda, Torrance (Across from Sears) FR 5-2591

**PAINT** **PUNT'S PAINT CRIB**  
FEATURING A COMPLETE LINE OF GLIDDEN PAINT... CUSTOM MIXED COLORS WHILE YOU WAIT 22841 South Figueroa Street, Torrance Phone TE 5-9525

**PET SHOP** **CARSON PET SHOP**  
Tropical Fish and Aquariums — Pumps — Filters — Plants — Complete Line of Pet Food Dog Accessories—Dogs, Cats, Birds Boarded—We Cater to Amateur Hobbyists 249 E. Carson, Torrance Open 12-8 Weekday, 9-6 Saturday TE 4-2915

**PLYWOOD** **BOULEVARD PLYWOOD**  
Do It Yourself Materials — Custom Made Cabinets — Formica Counter Tops Made to Order—Aluminum Screens—Stains & Finishes—Hardware—"We Cut to Size" 1924 W. Lomita Blvd., Lomita DA 6-1760

**RADIATOR SERVICE** **WALTERIA RADIATOR SERVICE**  
Shaw Eggers, Owner—New and Used Radiators—Cleaning—Repairing—Recoiling 24424 Hawthorne Blvd., Waverly

**RESTAURANT** **THE COUNTRY BURGER DRIVE-IN — FOOD TO GO**  
Country Burgers — A Meal on a Bun! — Barbecued Sandwiches — Tacos — Tostadas — Chili — Fried Beans — Tamales — Coffee — Cold Drinks — Shakes Corner Torrance and Hawthorne Blvds, Torrance FR 1-9083

**DIXIE CAL'S STEAK AND BAR-B-Q HOUSE**  
Food to Go—Special T-Bone Steak, 1.95—Bar-B-Q Dinners from 2.00 Luncheons Daily, 1.05—Open Daily 11 to 11—Open Until 2 a.m. Weekends 23814 Hawthorne Blvd., Torrance FR 8-5003

**HOUSE OF SWEDEN**  
Smorgasbord; 16 Dishes for Lunch, \$1.10, Tuesday, Wednesday, Thursday, Friday, 11:30 a.m. to 4 p.m. 25 Dishes for Dinner for \$1.65, Tuesday, Wednesday, Thursday, Friday, 4 p.m. to 9:30 p.m. Dinner from 11:30 a.m. to 9:30 p.m. Saturday and Sunday Closed Monday. 305 Avenue "G" at Pacific Coast Hwy., Redondo Beach FR 5-0089

**GOLDEN GATE TAVERN**  
117 Bond St., Redondo Beach 374-9655 Finest New Orleans style jazz band, every Fri. and Sat. night from 9 p.m. to 1 a.m. Across from Fisherman's Wharf. Open daily from 10 a.m. to 2 a.m. Closed Monday

**RUG CLEANERS** **BYRD RUG AND UPHOLSTERY CLEANERS**  
All Work Our Plant or Your Home—Our Specialty Wall-to-Wall Carpet Cleaning Serging and Binding—Sewing and Repairing — Tinting and Dyeing 1931 W. Artesia, Gardena FR 2-5163 — DA 4-2403

**SERVICE STATION** **BEN BENDA CHEVRON SERVICE STATION**  
Brake Service—Wheel Balancing—Road Service—Towing—Tires, Tubes, Batteries BEST BUYS IN USED CARS 21703 S. Avalon, Torrance TE 4-7420

**SERVICE STATION** **GEORGE PHILLIPS CHEVRON SERVICE**  
Service With a Smile — Tune Ups — Brake Service — Wheel Balancing — Electrical Service — Free Pickup and Delivery. 4605 Torrance Blvd., Torrance FR 1-4901

**SERVICE STATION** **GRAVENS ST. RICHFIELD SERVICE**  
J. W. Alcock, Proprietor — One Stop Service — Tune-up — Brake — Wheel Balancing Tire Service—Blue Chip Stamps 1529 Gravens, Downtown Torrance FA 8-9670

**TELEPHONE ANSWERING SERVICE** **BAY CITIES ANSWERING SERVICE**  
Margaret Marsh's 24-Hour Personalized Service—Business—Professional "Let Us Be Your Choice With a Smile in Our Voice" 23912 Crenshaw Blvd., Lomita DA 5-4100

**THEATERS—DRIVE-IN** **HARBOR DRIVE-IN THEATER**  
Lee Wuestewald, Mgr.—The Place to Take the Family—\$1.50 Per Car No Baby-Sitting Problem Here—Starts at Dusk—Open 7 Days a Week 23322 So. Vermont Ave. Vermont at Sepulveda TE 4-8501

**TRAILERS** **GEO. W. FRY, INC.**  
New and Used Trailers. Factory Distributor for Paramount, Angelus, Mayflower, Double Wide, Great Lakes, Ken-Skill, Travel-Ease, Shasta and Riviera. Will Take Cars, Real Estate, Etc. in Trade. 2117 Pacific Coast Hwy., Lomita DA 6-2200

**TRANSMISSIONS** **CROWN TRANSMISSION EXCHANGE**  
Wholesale Service to garages & gas stations—Repaired, Rebuilt, Exchanged—Any type, model or year. Complete line of new and used parts—Pickup and Delivery FR 8-5085 1838 W. Redondo Beach Blvd., Gardena DA 8-8366