

July 1, 1961, Estimate

108,506



## TORRANCE PRESS

3238 SEPULVEDA BLVD., TORRANCE, CALIFORNIA

## Inside the Press

Classified 3-6B  
Darlene Cope 4A  
Sports 4A  
Women 1-2B

VOLUME XIII, NUMBER 63

SUNDAY, NOVEMBER 26, 1961

10c A COPY

## CRASH KILLS WOMAN

Polio Clinics  
Slated by Five  
Local Hospitals

"Polio clinics" will be repeated at five greater South Bay community hospitals Thursday, Nov. 30, for persons who need polio booster inoculations, or who wish to begin or continue a polio inoculation series.

Five hospitals involved will offer the inoculations Thursday from 4 through 6 p.m. at a nominal charge of \$1, medical spokesmen said.

The program is under auspices of Southwest District of Los Angeles County Medical Association. The Southwest district of LACMA will make physicians available during the designated hours.

Hospitals will provide space, equipment, nursing personnel, and serum. Auxiliary and volunteer units will provide secretarial aid and other assistance which may be necessary.

The hospitals: Gardena Hospital, Inc., 1145 W. Redondo Beach Blvd., Gardena; Little Company of Mary Hospital, 4101 Torrance Blvd., Torrance; Riviera Community Hospital, 514 N. Prospect Ave., Redondo Beach; Torrance Memorial Hospital, 1425 Engracia St., Torrance.



TORRANCE MAN HURT—Orville L. Cooper, 37, of 2131 W. 169th Place, was injured last week in a three-car collision on Redondo Beach Blvd. Cooper's car caromed off side of vehicle driven by Frank Musso, 71, Los Angeles and crashed

head-on into another driven by Theodore. Yin Hoy Mau, 26, of Gardena. Cooper, Musso, and his wife, Maria, 66, were treated for minor injuries at Gardena Community Hospital, then released.

Car Pileup Brings  
City's 9th Traffic  
Fatality of Year

A Wilmington woman became the city's ninth traffic fatality of the year when she was thrown from her car during a crash last week.

Surrounded by last minute Thanksgiving purchases, the woman, Mrs. Betty Jo Haney, 34, fell to the street and was run over when the car in which she was riding spun around.

She was pronounced dead upon arrival at Little Company of Mary Hospital.

Taken into custody on suspicion of manslaughter and felony drunk driving was Refugio O. Mungarro, 41, of Redondo Beach.

According to investiga-

tors, Mungarro is currently serving a year probation after being convicted of drunken driving only two months ago.

## MAKING TURN

Officers said that the driver of the car in which Mrs. Haney was riding, T. T. Amerperosa, 30, of Wilmington, said that he was making a turn into a market parking lot near Sepulveda and Hawthorne when his car was struck by the vehicle driven by Mungarro. Impact was so great that it tore the gasoline tank loose from his car and spun him around several times.

Passenger in the Mungarro car was his daughter, Virginia Griffith, 20, of Redondo Beach.

A Torrance man was injured Wednesday night in a spectacular three-car collision on Redondo Beach Blvd.

Orville L. Cooper, 37, of 2131 W. 169th Place, was involved in a collision with another car driven by Frank Musso, 71, of Los Angeles, and was spun more than 100 feet to collide, head-on with another vehicle driven by Theodore Yin Hoy Mau, 26, of Gardena.

Mrs. Maria Musso, 66, was thrown from the car driven by her husband, which exploded into flame. Passersby rescued the elderly man.

All were treated for minor injuries, then released.

## 100,000 VISITORS

Throngs of Customers on Hand Friday as  
Big Ben Discount Store Stages Opening

More than 100,000 people crammed their way into the new Big Ben discount store, corner of Crenshaw and Pacific Coast Highway Friday afternoon in what was probably the biggest grand opening in the history of Torrance.

Sheriff's deputies, CHP officers, Torrance police and special deputies were needed to control the rush of traffic that backed up for miles in every direction.

Traffic situation was so bad that "sig-alerts" were broadcast on local stations warning motorists to stay away from the area.

Arthur Guyer, official of the store said, "I would

like the people of this area to know how greatly we appreciate the turnout to visit our store and we are deeply sorry that great number of our friends and customers were unable to get in.

"However, we have decided to continue our opening sale right through until Christmas with all of its tremendous values."

Tremendous number of customers who attended the opening astounded even the most optimistic of the store's personnel. Stock clerks were kept running replacing the tremendous values as soon as the shelves were cleared out.

Cars were packed into

the parking lot and along the street and, in many cases, had to be moved so that normal street traffic on Pacific Coast Highway and Crenshaw could flow through.

First of the hardy citizens who attended the first day ceremonies arrived in the early morning although the official opening wasn't scheduled until noon.

On hand for the opening were all of the Torrance city councilmen, officials from Big Ben and the Torrance Chamber of Commerce, city department heads and James F. Holt, president of Arden Farms, who cut the ribbon.

## DRIVERS NOT HELD ...

Pedestrian, Passenger Hurt In Crashes  
As Weekend Rain Slicks Torrance Streets

Rain-slicked streets over the weekend resulted in a rash of automobile pileups including two injury accidents Friday night.

Lawrence Palmer, 11, of 223 Paseo de Granada, was taken to Little Company of Mary Hospital for treatment of injuries sustained when he was hit crossing the Via Monte de Oro and Estrella intersection.

Driver of the vehicle,

Phillip Gulick de la Porte, 17, of 3209 Dalemead St., Torrance, was not held.

The youngster was given emergency treatment for minor injuries and then transferred to Kaiser Foundation Clinic.

## THREE CARS

In a second crash involving three automobiles near the intersection of Pacific Coast Highway and Prospect, a 25-year old woman was hurt and

taken to a private physician for treatment.

Injured was Janet Eisenhart, of 3700 Pacific Ave.

Drivers of the other vehicles, Edward S. Kunda, 33, 544 Palos Verdes Blvd., Lawrence W. Updegrave, 21, 4021 W. 242nd St., and Joseph Hobson, 22, of 3700 Pacific Ave., driver of the car in which Miss Eisenhart was riding, were not held.

## Citizens Group Urges Bus Study

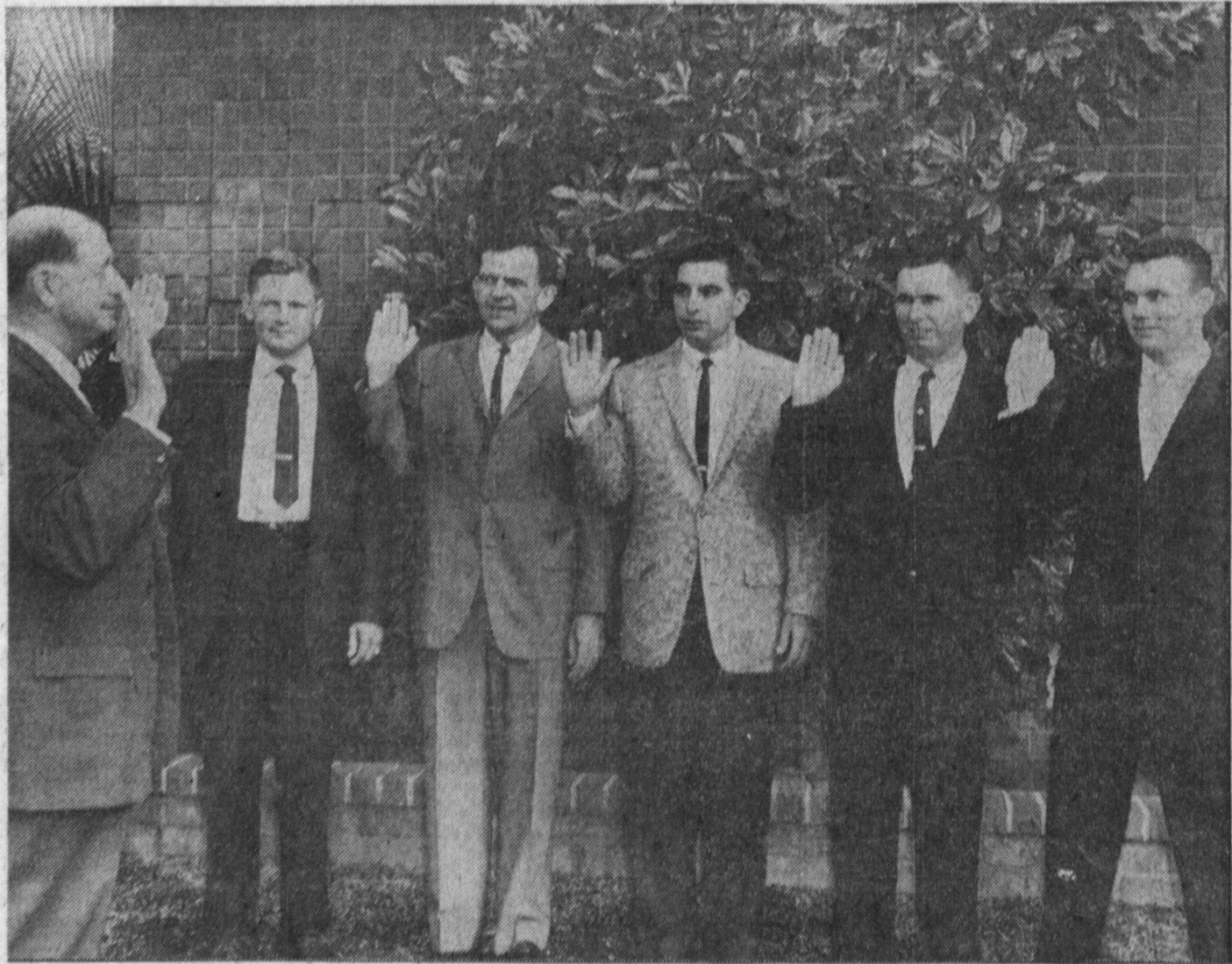
A ten-point program for improving the city's public transportation will be presented to the council Tuesday night by the Citizens Bus Committee, it was reported Friday.

Margaret Clark, chairman of the group, listed the program as:

Hiring an outside expert to make an impartial survey of the local system and give favorable consideration to his recommendations; give a free hand to the present bus superintendent; prominent signs pointing the way to the bus station; revised service on the Torrance-Long Beach route to accommodate a visiting hours at the Harbor General Hospital; development of an extensive advertising publicity campaign;

Extension of the Torrance-Los Angeles route,

okayed by the council on Nov. 14, be conducted for one year rather than six months and that Sunday service be restored; that a line be reinstated from Lomita up Narbonne-Arlington, to Torrance; that the bus company investigate the possibility of constructing a bus shelter at the Del Amo shopping center; set up a Torrance Transit Authority with successful business people on the board; and that results of any independent surveys be made available to the public.



SWEARING IN CEREMONY—Five of the thirteen new officers who will go on duty with the Torrance Police Department tomorrow morning are shown as they are sworn in by Police Chief Percy Bennett. Shown are Bennett, William Bornhoft, Roy Beaver, Robert Armstrong, Donald Morrison and Charles Huchel. Additional officers were authorized by the council

during the mid-year budget sessions. Incoming group was so large they were required to take the oath in two sections. Some of the officers will go on duty immediately, others will report to the Sheriff's Academy Dec. 11 for four months training.



CROWDS GATHER—Only a small part of the estimated 100,000 persons who showed up for Friday's opening of Big Ben discount store, corner of Pacific Coast Hwy. and Crenshaw Blvd., are shown as they try to get into the value-packed store. Traffic was stalled for blocks in every direction, forcing

local police to call in "sig-alerts" to local radio stations warning other motorists away. Special values offered by the store as a part of their opening sale brought out the "early Christmas shoppers" in droves. Sale will continue until Christmas, store officials said.