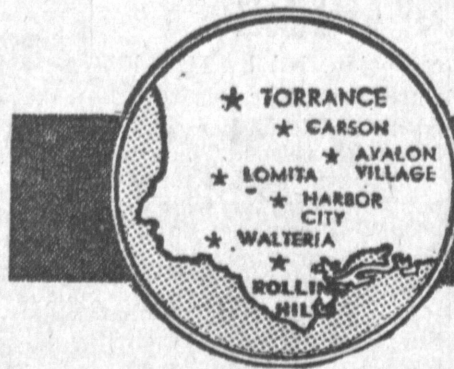


Clinton Cooke Quits School Board Post

LATEST TORRANCE POPULATION

July 1, 1961, Estimate

108,506



ACTION WANT-ADS CALL DA 5-1515

TORRANCE PRESS

3238 SEPULVEDA BLVD., TORRANCE, CALIFORNIA

VOLUME XIII, NUMBER 62

WEDNESDAY, NOVEMBER 22, 1961

10c A COPY

Inside the Press

Classified 7C-4D
Darlene Cope 9A
Sports 9A
Theater Guide 8A
Women 1B-4B

Councilman Scores Anti-Poker Sentiments of City Fathers

SEARCH FOR SUCCESSOR . . .

Cooke Quits School Board; Will Take Texas Position

Clinton B. Cooke, one of the two holdover members of the Torrance Unified School Board, Monday night submitted his resignation after five years service with the district.

Cooke, who is general superintendent of National Supply's fabrication department, stated that he is moving from Torrance to Texas, where he will work in the company's Houston plant.

PERSONNEL MEET

Other four members of the board, who accepted the resignation with regret, said they had scheduled a personnel meeting for next Monday evening to discuss a successor to Cooke. Under state law, appointment to fill the unexpired term of a member is a decision of the balance of the board. New board member will probably be named at the next public meeting.

Rumored as a top contender for the post is Dr. Kurt T. Shery, Torrance physician, who was a front-runner in board elections held in April.

Cooke, who must report for his new assignment by December 2, is a graduate of Gardena High School and attended college in Texas.

He was appointed to fill an unexpired term on the board in 1956 and was subsequently elected to the post in 1958. His term of office would have expired in 1963.

Bids for Lomita Water System to Be Opened Wed.

Bids for installation of a water system in the 240th Street Annex to County Waterworks District No. 13 will be opened today.

Announcement followed approval of plans and specifications for the project by the Board of Supervisors.

Construction will involve furnishing and installing of approximately 2,400 lineal feet of water mains for a complete water system for customers of the former Narbonne Ranch Water Company's No. 2 and No. 3 within recent annexations to County Waterworks District No. 13.

Officials said the bids will be opened in the offices of County Engineer John Lambie. The project is estimated to cost \$24,000 and will take 60 days to complete.

\$1500 Grant

Awarding of \$1,500 for a roadway construction project on Palos Verdes Drive West at Rue Beaupre, Palos Verdes area, was announced by County authorities last week.



FIRST SALE — Councilman Nicholas Dralle and Mayor Albert Isen last night were the first to purchase tiny rosebuds commemorating Torrance Tournament of Roses Day on Saturday, Dec. 2. Rosebuds will be sold at 15 different locations within the city.

Funds from the sale will go to defray cost of Torrance entry in this year's parade. Here the two councilmen make their purchase from Judi McTee, Miss Waverly. Mayor officially proclaimed the event at Tuesday council session.

Former FBI Agent Philbrick To Be Here Dec. 8.

Herb Philbrick, former FBI counterespionage, will speak through the United States. Through the series Philbrick continues his battle against communist infiltration in the United States. Subject of the dramatic "I Led Three Lives" series is alerting Americans, through the use of speeches, to the methods and techniques of the communist in infiltrating organizations and involving citizens of their schemes.

BIG BEN OPENS DOORS . . .

Huge Opening Ceremony to Be Friday for New Discount Store

First of a chain of multimillion dollar new discount centers, Big Ben Stores opens its doors Friday noon with a parade of state and civic officials, television and radio store broadcasts, personal appearances and hundreds of bargains and prizes.

Mayor Albert Isen of Torrance and hosts Al and Marilyn Jarvis will cut the ribbon at the grand opening of the huge, 90,000 square foot center, located at Crenshaw Blvd. and Pacific Coast Highway.

Big Ben bulges with three million dollars worth of brand name merchandise waiting to be sold at discount prices. Thirty-five major departments carry such retail goods as: fresh meats, groceries, produce, furniture, imported diamonds, auto accessories, clothing, hardware and insurance.

PRIZES AWARDED

A large reproduction of the famous London Tower clock, the Big Ben clock, will strike hourly special sales. Prizes for lucky store customers will include a mink stole for \$10, diamond and watch for \$5, radios for \$1.

Celebrities appearing at opening ceremonies as guests of Big Ben include: Dorothy Gardner, Bozo the Clown, Skipper Frank, Tom Hatten, Pat Buttram and the Squeakin' Deacon. Station KTLA will telecast its entire Friday afternoon schedule from the store. Customers and officials will be interviewed.

Nine radio and television stations and many newspapers in Southern California carry lists of Big Ben specials throughout the opening weekend.

"We are pioneering a new idea in

credit in California," said Big Ben president, Obby Gribow. "For the first time, the public can purchase their groceries, meat and produce on Big Ben's revolving charge account.

"Hundreds of nationally-advertised toys, pharmaceuticals, gifts, and appliances . . . Zenith, General Electric, RCA, Packard Bell . . . all will be sold at discount prices. We feature an unconditional money-back guarantee at Big Ben, on every item sold."

There will be \$10,000 in hourly prize drawings through opening week. Prizes include: a round-trip to London for two with \$500 in expense money; 10 mink stoles; diamond rings; portable TV sets; radios; refrigerators; stoves and bowling balls.

STORE HOURS

Store hours are: noon 'til 9 p.m., weekdays; 10 a.m. 'til 6 p.m., Saturday and Sunday. The Big Ben lot will hold 2000 parked cars.

Big Ben stores is a subsidiary enterprise of Golden State Properties, Inc., owners of shopping center developments, the Surf and Sand Motor Hotel and Outrigger Restaurant in Laguna Beach. Eleven other Big Ben stores will open in Southern California. Six locations have already been selected, and building will start in 1962.

Other major Big Ben departments stocked with merchandise from around the world are: jewelry, cameras, luggage, liquor and wines, toys, pharmacy, drug and sundries, sporting goods, drapes and linens, clothing for men, women and children, infants' wear, family shoe department, gourmet snack bar, shoe repair and housewares.

"We Should Outlaw Horse Betting, Too," States George Vico

A Torrance city councilman last night loudly opposed laws that would specifically outlaw draw poker in California, then stated.

"If you're going to oppose poker as a form of gambling, why don't you oppose horse racing and pari-mutuel betting?"

Councilman George Vico, who is known for outspoken statements, felt that any state legislation passed should be aimed at all forms of gambling rather than at one aspect of the vice.

Outburst climaxed request by anti-gambling organizations that the city council endorse their program and notify state officials to that effect.

"FEW HANDS"

"Everybody in this room has 'gambed' at one time or another," he said. "We all enjoy going over to Las Vegas and it just isn't to see the shows. When company comes we all invite the men into the kitchen for a few hands while the girls sit in the front room and talk."

Organizations opposing draw poker have been seeking support from city councils throughout California in efforts to get state legislation outlawing this form of gambling. Under present regulations other forms of poker are illegal, although draw poker, high-low and low-ball are still permitted on local option.

LOCAL OPTION

Many public officials have gone on record as opposing anti-poker legislation because they feel that the real target is not gambling but local option, and the right of the community to decide for itself should be maintained.

Vico concluded by stating.

Rosebud Sale Dec. 2 for Tourney Entry

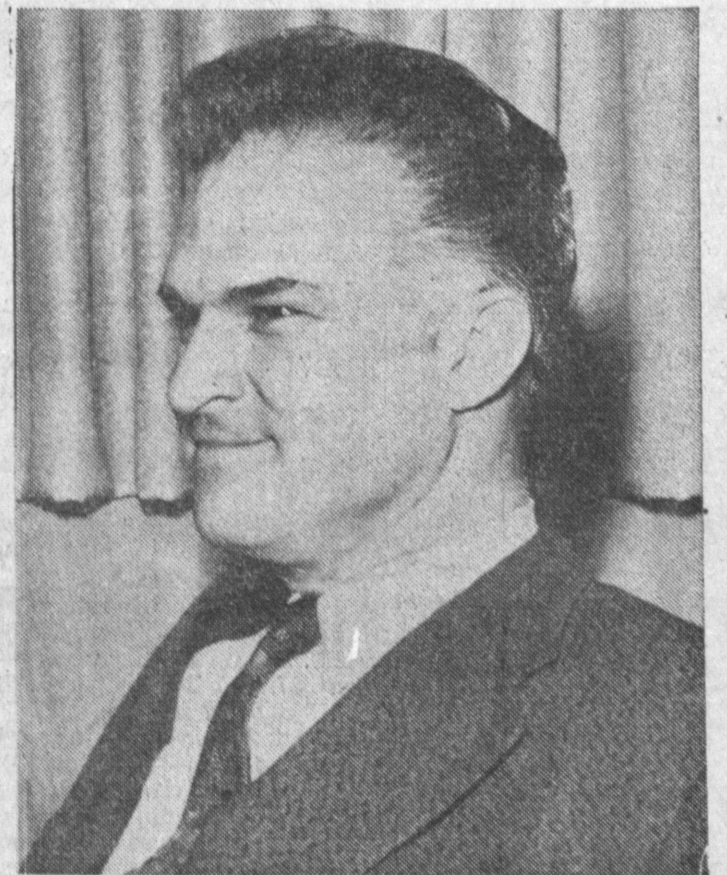
Service clubs and civic organizations are being called on next week to participate in the Torrance Tournament of Roses Day, Saturday, Dec. 2. Fifteen locations have been designated for the sale of rose buds, with all proceeds going into the float entry fund.

Mayor Albert Isen last night officially proclaimed the event at the city council meeting, then followed up the proclamation by purchasing the first of the rosebuds.

On hand to make the sale was Judi McTee, recently selected as Miss Waverly.

This year's entry will be titled, "Torrance By the Sea." It will feature a gnome riding a sea horse, the gnome to be decorated with poinsettias, delphinium and corten leaves. The sea horse will be decorated in Goldsmith and white chrysanthemums.

This will be the fifth consecutive year that Torrance has entered the Pasadena competition.



COUNCILMAN GEORGE VICO
... "Oppose All Gambling"

"I feel that you can't go by January 1, and that condemnation proceedings have been filed to obtain right-of-way to extend Carson Blvd. through the park area near Torrance High. Condemnation proceedings, originally scheduled for November 21, have been delayed for one week and will continue on Tuesday, November 28.



BLACKOUT—Rain Monday short-circuited power lines at the corner of Via Los Altos and Calle Mayor, setting fire to the pole and knocking out lights for nearly two hours in Hollywood Riviera and South Redondo. Firemen quickly quenched the blaze and Edison Company employees climbed the wet poles to restore the power. Downpour, plus wet pole, made the job especially hazardous but job was completed without incident.



AREA LANDMARK—This huge replica of London's Big Ben Clock, which has been erected in front of its namesake, the multi-million-dollar Big Ben Discount Store, corner of Crenshaw and Pacific Coast Hwy., will chime in special values during opening ceremonies starting Friday. More than \$10,000 in prizes will be given away during the opening, which will feature personal appearances of television personalities and local notables.