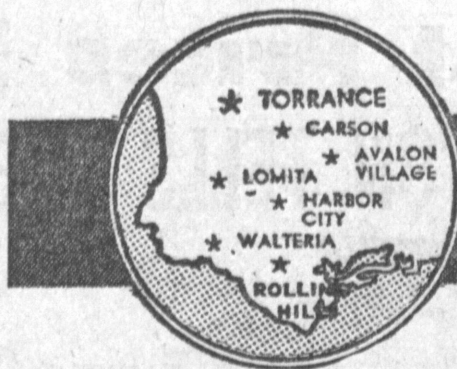


Man Dead as Car Plunges Off Freeway

LATEST TORRANCE POPULATION

July 1, 1961, Estimate

107,183



ACTION WANT-ADS CALL DA 5-1515

TORRANCE PRESS

3238 SEPULVEDA BLVD., TORRANCE, CALIFORNIA

Inside the Press

Classified _____ 5B-8B
Darlene Cope _____ 3B
Sports _____ 3B
Women _____ 1-2B

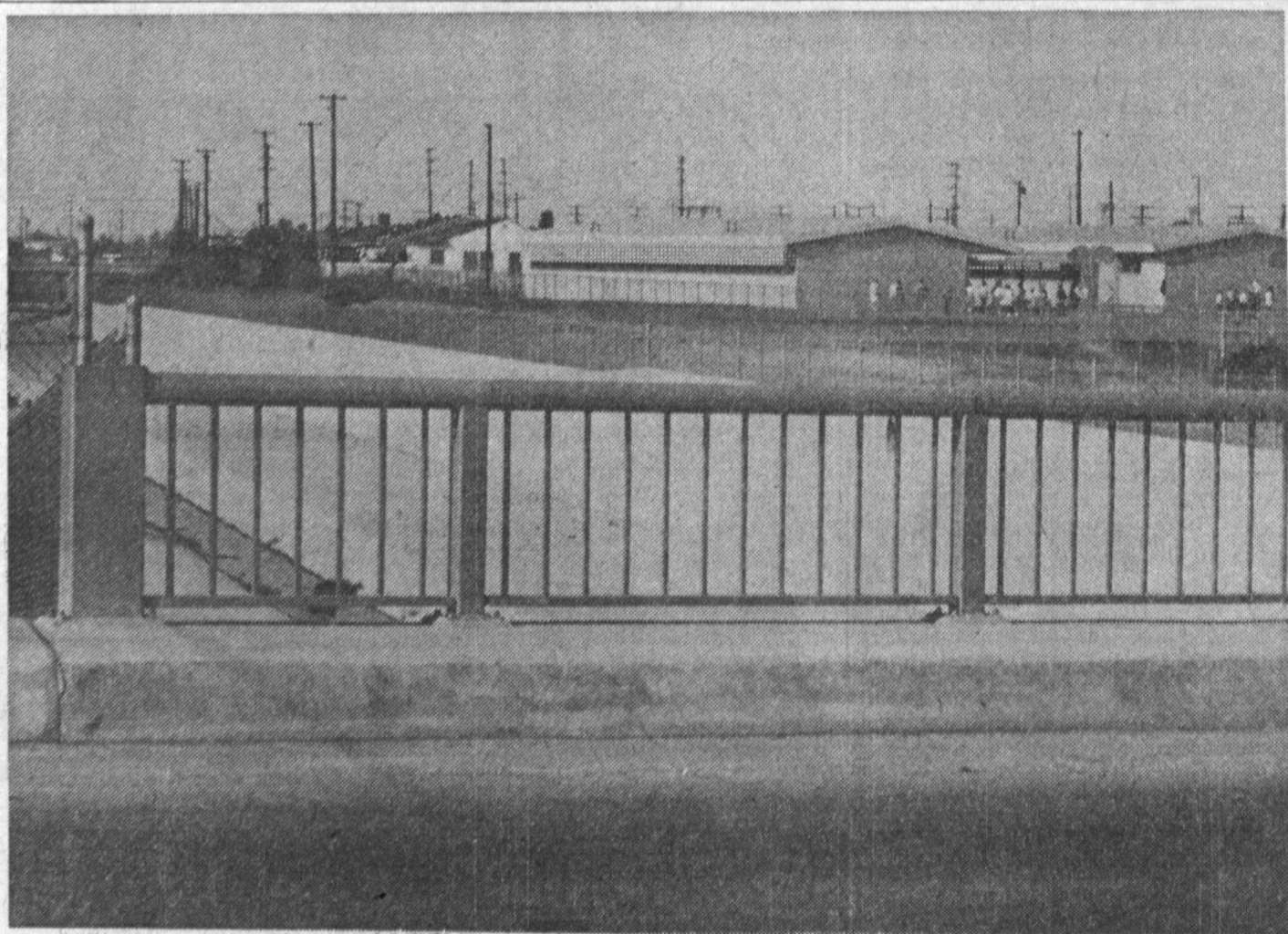
VOLUME XIII, NUMBER 61

WEDNESDAY, NOVEMBER 19, 1961

10c A COPY

THUGS ROB GAS CO.

City Denies Bridge Responsibility



DEATH SCENE—Bridge across Dominguez Channel, 169th and Arlington, which is protected only by 3 1/2-foot guard-rails, is the subject of heated debates between the city and the county flood control district over who has the responsibility for pedestrian safety.

Four-year-old youngster tumbled to his death from the structure last week. Upset parents in the neighborhood have presented petitions to the city council demanding the erection of safety fencing.

Courts to Determine Who Will Maintain Safety Rails, Fences

The city of Torrance and County Flood Control this week are jockeying for position in the hotly contested issue of just who is responsible for maintaining safety factors on bridges crossing Dominguez Channel.

Issue came to a head a week ago when a four year old youngster managed to squeeze through the rails on the bridge and fell to his death on the concrete apron, 40 feet below.

The county has maintained safety chain link fences along the sides of the channel which more or less keep children out of the flood control ditch but on the bridges only a 3 1/2-foot guard rail protects pedestrians from toppling over.

Both the city and the county have denied responsibility for maintaining the safety of the bridges. Cost of erecting the auto and pedestrian crossings of the channel were shared by both.

ACTION PENDING

Court action is pending and final responsibility will probably be determined by the courts.

Upset parents, whose children must cross the bridges on their way home from school, have presented petitions to the council demanding that safety chain link fencing be erected on the rails. City officials are of the opinion that, although there is doubt concerning responsibility, the city, in the interest of public safety will probably have to put them up.

Foggy title to the bridges is based on the fact that the County demanded, and got, easements for the bridges, yet the roads that cross the channel on the bridges are Torrance streets.

Gunmen Loot Register, Safe, Make Escape

Two armed bandits, carefully concealing their faces behind handkerchiefs, Friday noon held up the Torrance office of the Southern California Gas Company, 1370 Post St., and escaped with all of the money in the till and the safe.

Clerk Mary E. Lux, of Los Angeles, was the only one in the office at the time of the robbery.

Mrs. Lux told investigating officers that she was in the office preparing for the noon rush when the two men came in. One of the men approached the counter as though he were going to pay his bill while the other stood watch by the door.

When he got to the counter he pulled a small automatic pistol from his pocket, pointed it at her, and said, "Give us everything in the drawer." When Mrs. Lux complied, the bandit then

ordered her to give him what money was in the safe.

The gunmen then made their escape out the back door of the office.

Clerk estimated the loss at between \$250 and \$300.

Police officers said the men were both between 20 and 25 years of age, about 5'9" and between 150 and 155 pounds. Both were dark complected, possibly Latin American.

Investigation of the robbery is being conducted by Torrance detectives Miles Hamilton and Wally Nitz of the robbery detail.

Torrance Probation Office Plans Get Final Okay From County Board

Approval of schematic plans for the Torrance Probation Department building, which will be located in the proposed civic center, were announced this week by Supervisor Burton W. Chace. Chace's district includes the Torrance area.

Plans as approved by the board of supervisors call for construction of a five-section area office consisting of a director's office, offices for five senior deputy probation officers and 50 deputy probation officers. Also to be provided will be waiting rooms and staff conference rooms.

Chace said the building will have concrete pile foundation, reinforced concrete

ESTIMATED COST

Estimated cost of the construction is \$382,487. Architects are Harold Johnson and Lindsey and Lindsey.

ELECT LYMAN . . .

Torrance Political Club Names Officers for '62

At a meeting of Torrance Democrats Inc., held Thursday, at 1305 Teri Ave., officers were elected for the coming year. David K. Lyman, a local attorney, was elected president. Other elected officers were Leo Salisbury, vice president; Olga Thorington, secretary; Robert White, treasurer; Marion Lyman, executive secretary; Roger West, Robert Kerber and Helen Stout, directors.

SPEECH

In his acceptance speech, the new president stated that during the two years Roger West was president of Torrance Democrats, Inc., it had grown from a club of only seven members to one of over 100, and the club had become one of the most active Democratic clubs in the

Southern California area.

New president pledged that during the coming campaign year the tradition of Torrance Democrats Inc. as a leading organization in campaign activities would be maintained and an invitation was extended to all Democrats in the city of Torrance who wish to participate actively in politics to join the club. Information can be obtained from Marion Lyman, FA 0-1803.

MEETING DELAYED

The Torrance Airport Commission meeting scheduled for November 23, 1961 (Thanksgiving Day) has been adjourned to December 14, 1961.

Slate Tribute For Norm Verry At El Camino

Redondo Beach American Legion Post 184 will pay tribute to the late Norm Verry at the fourteenth annual El Camino College football dinner, November 28 at 7 p.m.

To be called "The Norm Verry Memorial Dinner," the banquet will also honor the 1961 Warrior grid team which served under the beloved coach until his fatal illness, which began en route to Boise for the Indians' first practice game of the season.

A highlight of the yearly banquet will be the naming of the most inspirational player, who will receive a memorial trophy in honor of Louis J. Drnovich, who died in World War II.

First Vice Commander Armand R. Meyung will be the dinner chairman.

Torrance Area Man Killed, Wife Injured As Car Plunges From Harbor Freeway

A man was killed and his wife injured Saturday morning when he lost control of his car on the Harbor Freeway at Anaheim St.

The accident occurred at 2:10 a.m.

Killed was John Contradas, 34, of San Pedro.

His wife, Lorraine, was taken to Harbor General Hospital for treatment of unknown injuries, according to Officer Carl Randall of the Harbor Division.

Randall said Contradas apparently fell asleep while driving and his car jumped the freeway divider, hit a guard rail surrounding the opening to Anaheim St., and plunged 22 feet to the street below.

Mrs. Contradas was believed to be asleep at the

time of the accident, police reported.

As a result of the accident, concrete was knocked loose from the Anaheim St. overpass, causing damage to a car that was eastbound on Anaheim.

\$20,000 TOWER . . .

Big Ben Discount Store Grand Opening This Week at Crenshaw, Hwy. 101 Site

A huge replica of London's famous Big Ben clock has been erected over the first Big Ben discount center at Pacific Coast Highway and Crenshaw Boulevard, Torrance. The 35-department, major shopping building, built in buff and tan at a cost of \$800,000, will open immediately after Thanksgiving.

There will be a continual three million dollar inventory of nationally advertised brand merchandise to be sold at discount prices, according to Obby Gribow, president of Big Ben Stores, Inc.

The Big Ben tower, complete with chimes, was designed and erected by the Heath Company, Los Angeles, from charts and photographs of the original tower in London, built in 1856. The Torrance tower is contemporary in design, but is faithful to all features of the original Big Ben Clock.

SPECIALS

The clock will sound chimes which will signify bargain specials in the store, and announce the hours from noon until 10 p.m. The clock will also play music during holidays, which will be heard

within a five mile area. Six additional Big Ben centers will be built in Southern California during 1962. The Torrance store, with outside parking for 2000 cars, will feature the following departments: grocery; meat; produce; appliances; men's, women's and children's clothing; sporting goods; hardware gifts; pharmacy drugs and allied units.

Big Ben Stores, Inc., is a subsidiary corporation of Golden State Properties, Inc. Builder of the center is the Q. B. Elsey Construction Co., Santa Ana.



TORRANCE LANDMARK — George Graziadio, president of Golden State Properties, Inc.; Fred Reed, vice president and Treasurer of Golden State Properties; Obby Gribow (on ladder), president of Big Ben Stores, Inc.; and Arthur Guyer, vice president and general manager of Big Ben Stores, are

shown with the huge clock that will be erected over the company's facility at the corner of Crenshaw and Pacific Coast Hwy. Torrance's newest discount store will open its doors immediately after Thanksgiving.



DIAL DA 5-1515 . . . we'll do the rest! It's that easy to place a Torrance Press want ad. Pick up your phone and call DA 5-1515, an experienced courteous ad-taker will word a low-cost, result-getting want ad. Do it now. Just dial DA 5-1515, and turn your "don't needs" into ready cash!