

Municipal Golf Course Plans Approved For Grandview Palos Verdes Estates

Increasing the already high interest in The Estates, newest Grandview Palos Verdes component, was the news last week that construction of an 18-hole municipal golf course near the homes has been approved by the Los Angeles Board of Supervisors.

Work is slated to start next May on the Los Verdes course and an 18,000 sq. ft. clubhouse.

"With the Palos Verdes Country Club to the north, Los Verdes to be built to the south, and the closeness to riding and ocean sports," said William C. Kulow, director of sales, "it is a fair statement to term the environment of The Estates a sports lover's paradise."

The new community, along Granvia Altamira adjacent to the city of Palos Verdes Estates, has recorded 58 home sales in the five weeks since starting pre-view showings.

Prices start at \$25,000, with monthly payments from \$142.

152 HOMES

The 152-home project offers many views of the ocean and the Los Angeles city basin.

Dwellings are close to the Peninsula Shopping Center, elementary school, and are a short bus ride from the new

Palos Verdes High School. Three basic floor plans are available in a choice of 12 exterior stylings by architects Harris & Rice, AIA.

Standard in all are wall-to-wall carpeting, built-in deluxe gas ranges and ovens, fireplaces with hearth and log lighter connection, large utility rooms opening to both kitchen and double garage, and two hts. abo. joining the master bedroom. Dishwashers are also provided in most models, and are optional in some.

TWO PLANS

Two plans, The Capri and The Catalina, contain three bedrooms, dining or family room, and offer interior living space from 1,432 to 1,618 sq. ft., including utility room.

The Catalina features an ash divider, with louvered doors, between living and family rooms.

The Crescendo, a four bedroom and family room residence, contains 1,816 sq. ft. of inside space, and features an entry court, paneled living room wall, and dining bar form kitchen to family room.

Furnished model homes may be reached by taking Crenshaw Blvd. to Silver Spur Rd. and turning right.

Grandview-built homes in two other peninsula locations are now available for immediate occupancy, with trades considered.

Included are split levels and two award winning plans, The Deauville and The Dauphine.

Svendson Earns Assoc. Manager Position at STL

Space Technology Laboratories, Inc., a subsidiary of Thompson Ramo Wooldridge Inc., has announced appointment of Norman F. Svendsen to the newly-created position of associate manager of the Support Systems Department, Engineering Mechanics Laboratory.

Formerly head of the department's Launcher Systems Section, Svendsen will remain as acting head of the section until a successor is named.

Svendsen has been with STL for over five years, and is a member of the senior staff.

He is a graduate of the California Institute of Technology where he received his B.S. and M.S. degrees in aeronautics.

He and his wife reside at 4011 Rockbluff Dr., Rolling Hills.

Camino Band Announces Plans For Future

After the El Camino band winds up its seasonal football activities Friday at East Los Angeles, it will continue to perform at various activities throughout future months.

The band will again participate in the Junior Rose Bowl festivities Dec. 9.

The Warrior band will also appear in such community events as the Gardena Armed Forces and the El Segundo Holiday parades.

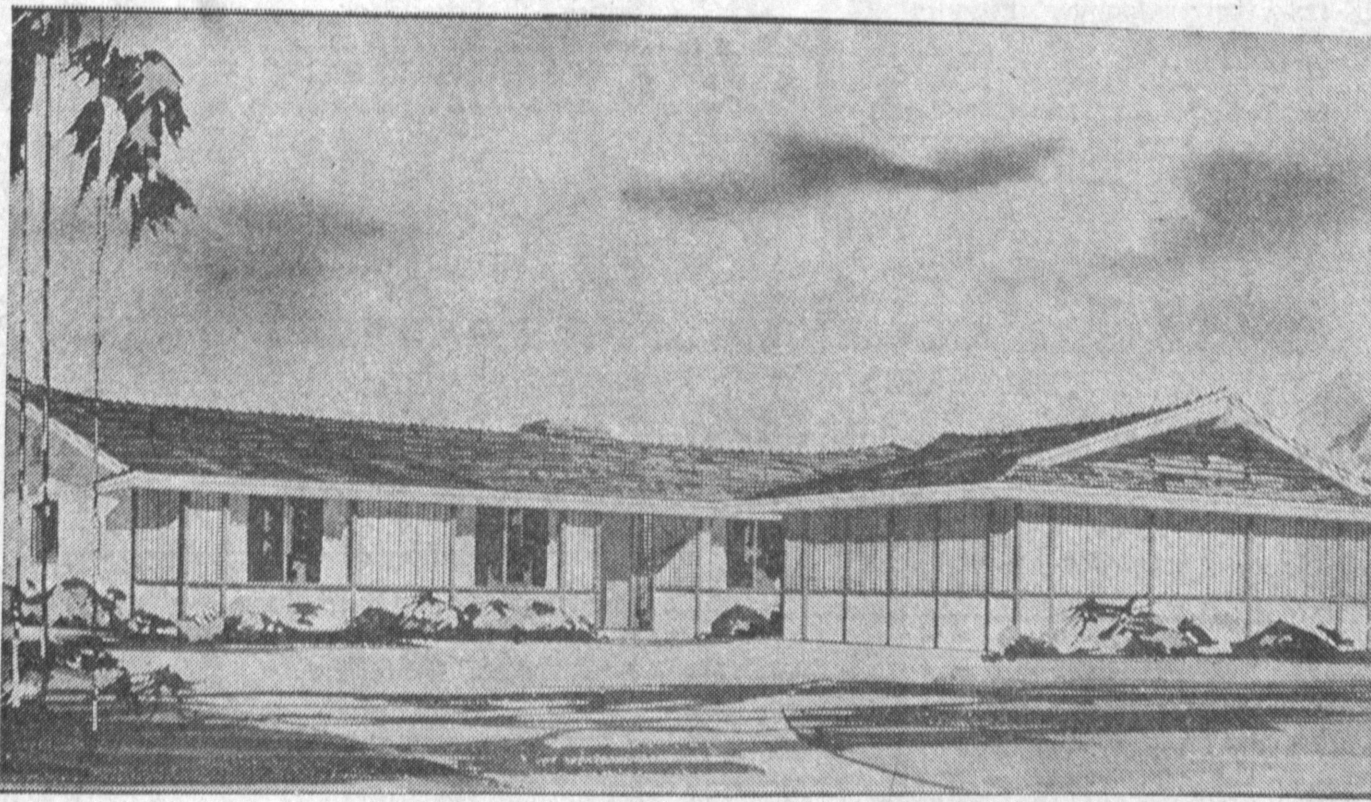
In addition to these community events the group will host the Southern California School Band and Orchestra District Festival March 3 and 4.

In the spring, the Warrior band will present its annual Jazz Festival.

Band members from Torrance are Edythe Bischoff, flute; Ted Bluechel, drum; Bobbie Moton, and Donna Reich, twirler, and Lowell Taylor on the sax.

Donald Hall, tenor sax, is from Wilmington.

Use classified. DA 5-1515



IN PALOS VERDES — Shown is one of the stylings at The Estates, newest component of Grandview Palos Verdes, where three and four bedroom and family residences are prices from \$25,000, with monthly payments from \$142. Wall-to-wall carpeting, built-in kitchens, custom-styled fireplaces are among features.

4 1/2%

current rate per annum

Paid Quarterly

- each account insured up to \$10,000
- funds received by the 10th of the month earn from the 1st
- save a trip—save by mail

Southwest Savings AND LOAN ASSOCIATION

INGLEWOOD

2700 W. Manchester—at 6th Ave.
PLeasant 3-2164

TORRANCE

1603 Cravens—at Marcellina
FAirfax 8-6111

Use Classified Ads—Phone DA 5-1515

Name Area Director For Aeronca

The appointment of a corporate representative for the Western Regional Office of Aeronca Manufacturing Corporation was announced this week by Dean N. Ninteman.

Ninteman, regional manager for the Defense Products Group of Aeronca, said Joseph T. Beal will assume his new duties immediately.

Prior to his promotion, Beal served as a sales engineer for the Middleton Division of Aeronca.

JOINED IN 1951

Beal joined the firm in 1951 in the production engineering department. The following year he was named a project engineer and in 1955 he was given the title of chief project engineer.

In 1956 he was promoted to project manager.

He served in this capacity during the engineering, design and production start-up phase of Aeronca's part of the B-52 G production program.

Appointed chief process engineer in 1958, he concerned himself with production processing problems related to stainless steel brazing and metal bond fabrication.

In 1960 he was appointed sales engineer.

A graduate of Wheaton College, Wheaton, Ill., with a M.S. degree from Miami University, Oxford, Ohio, Beal is a member of the Ohio Society of Professional Engineers, Society of Aircraft Materials and Process Engineers and the American Society for Testing Materials.

TORRANCE OFFICE

In his new position, Beal will represent Aeronca in 11 western states.

His office will be located at 24751 S. Crenshaw Blvd., Torrance.

The Defense Products group consists of divisions in Middletown, Ohio, Baltimore, Md. and Torrance.

These organizations are currently involved in research, development, and production of high temperature structural components, electronics, ground support equipment, as well as other sophisticated items for the fast changing space age.

Beal, with his wife and one child, has moved from Middletown to Rolling Hills.

GRAND OPENING! "THE ESTATES" GRANDVIEW PALOS VERDES



yes, as little as

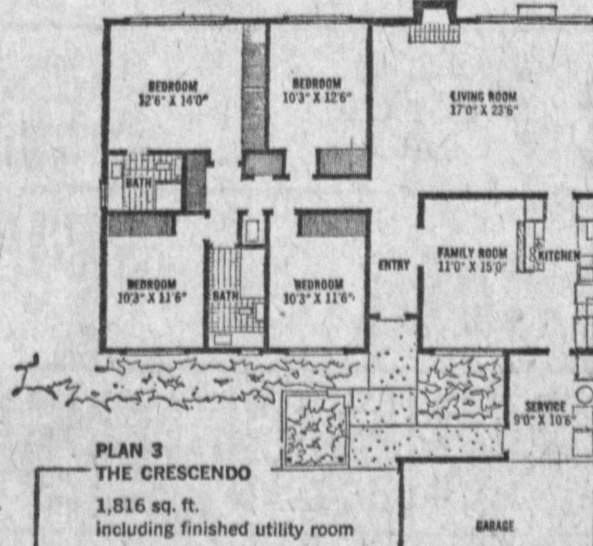
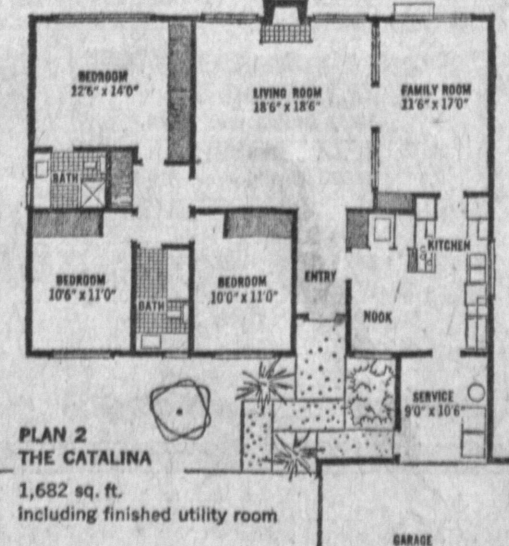
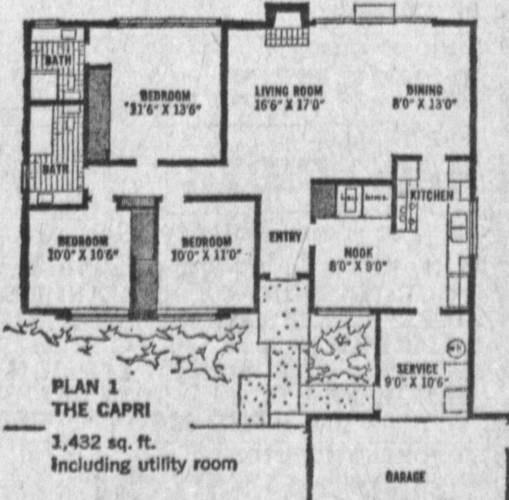
\$142

a month

for a Grandview-built home in Palos Verdes!

from \$25,000—10% dn.

Visit the
W & J SLOANE
FURNISHED MODELS
you've been waiting for!
Open Daily 9 a.m. 'til dark



FOR IMMEDIATE OCCUPANCY choose from a fine selection of executive homes: In THE COUNTRY CLUB UNIT, GRANDVIEW PALOS VERDES. Qualified Non-Vets from \$1,500 Dn. (plus costs), VA Terms for Qualified Vets (on a limited number). See lovely furnished models. And in WEST PALOS VERDES ESTATES, from \$34,900. Qualified Non-Vets, 90% financing, VA Terms for Qualified Vets. Visit ocean-view models, 3 furnished by Wilder's. Trades Considered.

3 & 4 Bedrooms & Family Room. 2 Bedrooms & Den. 2 & 2 1/2 Baths. Up to 2,127 Sq. Ft. Living Area. Architects: Harris & Rice, A.I.A.

all this, and heavenly view!

- WALL-TO-WALL CARPETING!
- BUILT-IN GAFFERS & SATTLER GAS RANGES & OVENS!
- WASTE KING DISHWASHERS (in Plans 2 & 3, optional Plan 1)!
- BRICK FIREPLACES & HEARTHES!
- ALL IMPROVEMENTS IN & PAID FOR!

More of the homes you loved in Grandview Rolling Hills...now available on pool-size (7,500 sq. ft. & more) lots...in a superlative setting with OCEAN AND BAY VIEWS! So if you dreamed of living on the peninsula of prestige...at prices and terms you can afford...be sure to visit "THE ESTATES" furnished models today!



Are You Looking for a Career? FLAVIO BEAUTY COLLEGES, INC.



WHERE MEN AND WOMEN LEARN A HIGHLY PAID PROFESSION IN 9 MOS. 3-MONTH MANICURING COURSE NO AGE LIMIT

RESERVATIONS NOW BEING TAKEN FOR DAY AND NIGHT CLASSES MODERATELY PRICED HAIR SERVICE (STUDENT WORK)

FLAVIO TORRANCE — REDONDO BEAUTY COLLEGES, INC.

1978 West Carson—FA 0-0404 Downtown Torrance — (Night and Day)

2205 Redondo Beach Blvd.—FR 6-8844 1 Mile West of Hawthorne Blvd.—North Redondo—(Days Only) Patron Parking in Re. of Both Schools