

ALL FOOD GIANT MARKETS JOIN IN

GRAND

ENRICHED
**PILLSBURY
FLOUR**
5 lbs. **49^c**

HEINZ
Tomato
Ketchup
19^c 14-oz.
Bottle

**YUBAN
COFFEE**
59^c
ONE POUND CAN

DOLE
PINEAPPLE
JUICE
23^c
LARGE
46-oz.
CAN

PROCESSED PASTURIZED
**FISHERS
CHEESE
LOAF**
2 POUND
LOAF **69^c**

CLOROX
LIQUID
BLEACH
49^c
FULL
GALLON
PRICE INCLUDES
5c OFF LABEL

NORTHERN The strongest, yet the softest. Really the very best.
TOILET TISSUE Incl. 4c off Label **12^c**

DOWNYFLAKE Just pop in your toaster—and voila, the best breakfast of all. 8 to a package
FROZEN WAFFLES **2 for 2^c**

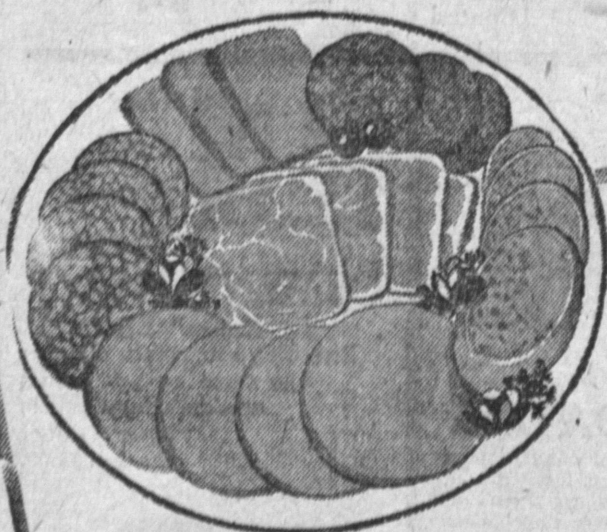
ROYAL PACIFIC Light meat. King of Pacific tuna fish. Number 1/2 can, flat.
CHUNK TUNA **LIGHT MEAT**

BUDDY BOY. Make popping a family affair. Let the kids pop. You supply butter. 2 lb. package.
POPPING CORN **2 LBS 29^c**
SHADY OAK Tangy, gourmet mushroom sauce is wonderful with chops, steaks and hamburgers. 6 oz.
STEAK SAUCE with Mushrooms **3 FOR 29^c**
SUNNY HILLS. Green. Serve chilled in salads or topped with rich mayonnaise. No. 300 can.
ASPARAGUS SPEAR **33^c**
THRIFTEE. Easy to cook and easy to serve with chicken and pot roast. Make lots of gravy. 2 lb. Pkg.
BLUE ROSE RICE **2 LBS 29^c**

GRANULATED
**C & H
SUGAR**
5 lbs. 49^c

FOOD GIANT
**SALAD
OIL**
QUART
BOTTLE **39^c**

BARTLETT. Serve with the
DEL M
Just begging to be poured
CHB.
METRECAL. Chocolate
LIQUID
MA PERKINS. A quick
FRUIT



IMPORTED DANOLA
SLICED HAM
5-oz.
PKG. **59^c**

VIENNA BRAND
**SLICED
PASTRAMI**
4-oz.
PKG. **39^c**

Assorted, fruit fillings and toppings.
Coffee Cake
59^c

Distilled from Grain
**SARNOFF
VODKA**
Full
Fifth **\$2⁹⁸**

Shady Springs, 9 Year Old, Bonded
**KENTUCKY
WHISKEY**
Full
Fifth **\$3⁹⁸**

XLNT HACIENDA
MEXICAN STYLE or ENCHILADA COMBINATION
DINNERS Reg. Size Pkg. **49^c**
CHEESE OR PEPPERONI
OH BOY PIZZA Reg. Size Pkg. **79^c**



SAVE WITH
**BLUE CHIP
STAMPS**



In SAN PEDRO
28849 Western Ave.
In NO. TORRANCE
4848 W. 190th at Anza