

Rolling Hills Man Reappointed

Supervisor Burton W. Chace announced reappointment of two members of the County Hospital Advisory Committee.

Those renamed by Chace were Dr. Lowell R. Hill, 21 Surrey Lane, Rolling Hills, and Mrs. Chester A. Hoover, 301 Ocean Avenue, Santa Monica.

In receiving approval of the appointments from the Board of Supervisors, Chace praised both Mrs. Hoover and Hill by pointing out that they "have made very fine contributions to this important County Committee."

Appointed

Assemblyman Clayton A. Dills, announced appointment of Rose Serukian as Democratic State Central committee woman for the 67th Assembly District. Miss Serukian lives at 3230 W. 190th St., Torrance. She replaces Geneva Wilkerson who resigned.

UNIQUE COINAGE METAL
Nickel is the only metal which has been proved to be satisfactory for coinage purposes in its pure form.

Vote Continuance Of Reduced Fare

Board of the MTA has voted to continue trial of a reduced fare program for senior citizens until Jan. 16.

MTA Board members approved the continuation following a report on senior citizen bus and streetcar riding habits and an announcement that additional activities in which the elderly can participate will be developed by Los Angeles County.

The MTA engineering staff reported a greater number of bus and streetcar rides are being taken by the 53,000 senior citizens who have registered for the lower 15-cent fare, but riding by this group will have to further increase to compensate for the reduced fare.

The engineering report showed that unless the 53,000 registered for reduced fares take additional rides, the annual revenue produced by this group will be \$130,000 less than that required to break even with fewer rides at the regular 25-cent fare.

SALVAGE BY NICKEL-PLATING

Nickel-plating is often used to salvage worn or mismatched industrial parts.

Vernitron Gets Missile Contract

Bernard Levine, president of Vernitron Corporation announced that his firm has been awarded a contract by General Dynamics/Pomona for the development of a booster-less resolver chain for the Mauler missile system.

When completed, the chain will be the heart of the coordinated conversion system for the stabilization of the new mobile missile system.

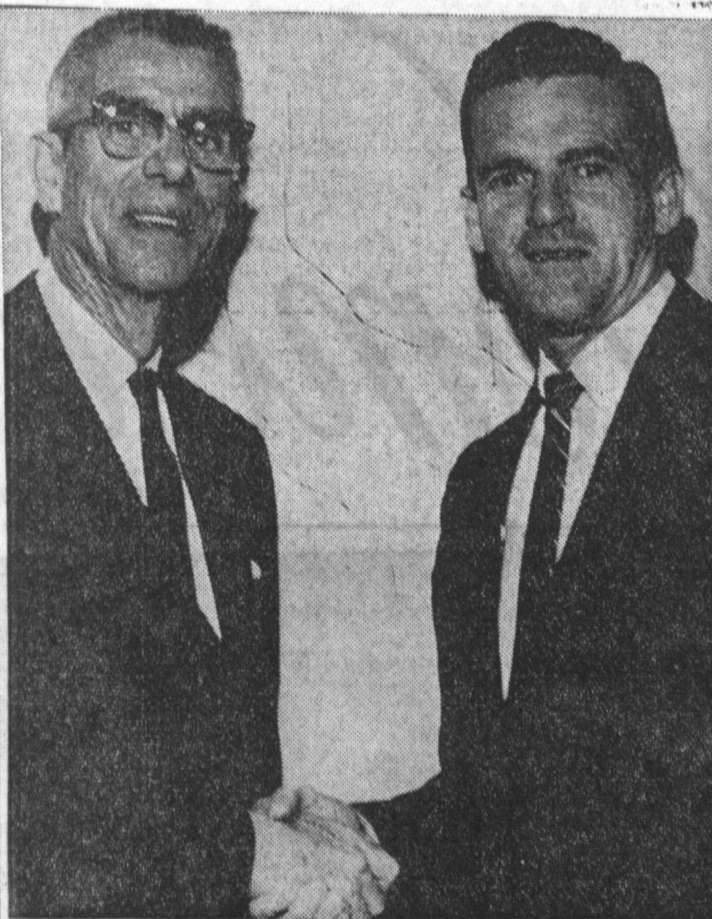
Levine said the resolver chain combines high reliability with reduced costs.

Vernitron Corporation is a leading independent designer-manufacturer of resolvers, synchros, and other precision servo components.

The Army Rocket and Guided Missile Agency, an element of the Army Ordnance Missile Command, Redstone Arsenal, Alabama, has overall charge of Mauler development.

NICKEL IN STAINLESS STEELS

Over 30 per cent of all the nickel used in 1960 was employed in the manufacture of stainless steels. The nickel in these steels gives them increased corrosion-resistance, ductility and strength.



NORTH TORRANCE Civic Improvement heard Councilman J. A. Beasley, council representative to the Intercity Highway Commission, speak Thursday night. Beasley (left) spoke on the Artesia Freeway project. Pictured also is John F. Mulvihill, Civic Improvement president.

Use Classified Ads—Phone DA 5-1515

News Of Servicemen

Participating in "Exercise Sea Wall," a joint Army, Navy and Air Force amphibious maneuver, Sept. 15-20, on San Juan Island, Wash., while serving aboard the dock landing ship USS Fort Marion, was Gary R. Shore, seaman, USN, son of Mr. and Mrs. Wesley Strayves of 1601 W. 205th St., Torrance.

The name "Sea Wall" is apt in that the landing is fortified with large log pilings. The operation will be an invasion by Army troops, landing from Navy ships and small craft under the cover of Air Force aerial support.

Fourteen ships from Amphibious Group One, based at San Diego, will transport battle groups of the Army's Fourth Division from Fort Lewis, Wash., to the island.

Pvt. Larry R. Dotson, 18, son of Mrs. Betty L. House, 5110 Carmelynn St., Torrance, recently completed the lineman's course at the Army Signal Training Center, Fort Gordon, Ga. During the eight-week course Dotson was trained to install and maintain aerial communication wires and cables. Dotson entered the Army last May and completed basic training at Fort Ord, Calif. He attended North Torrance High School and was employed by Harbor Belt Line Railroad in Wilmington before entering the Army.

Serving with the Sixth Fleet in the Mediterranean aboard the destroyer USS Ault is C. D. Loyd, commissary man third class, USN, son of Mr. and Mrs. Clarence D. Boyd of 5520 Towers St., Torrance.

The Ault recently visited the French Riviera, anchoring in Theoule, France. Crewmembers had an opportunity to visit nearby resort cities of Nice, Cannes and Monte Carlo and to tour the French Alps.

The destroyer departed Theoule, Sept. 5, for at-sea training, including several North Atlantic Treaty Organization (NATO) exercises. Its next scheduled port of call is Athens, Greece.

STEP UP TO HIGHER EARNINGS!

OUR 2ND UNIT
FALL CLASSES
NOW FORMING

TECHNICAL WRITING

Saturday Afternoons and Evenings
2 Sessions a Week.
12 Weeks Course

\$200

S & T ASSOCIATES

OR. 3-2550

6310 West 92nd St.

Westchester

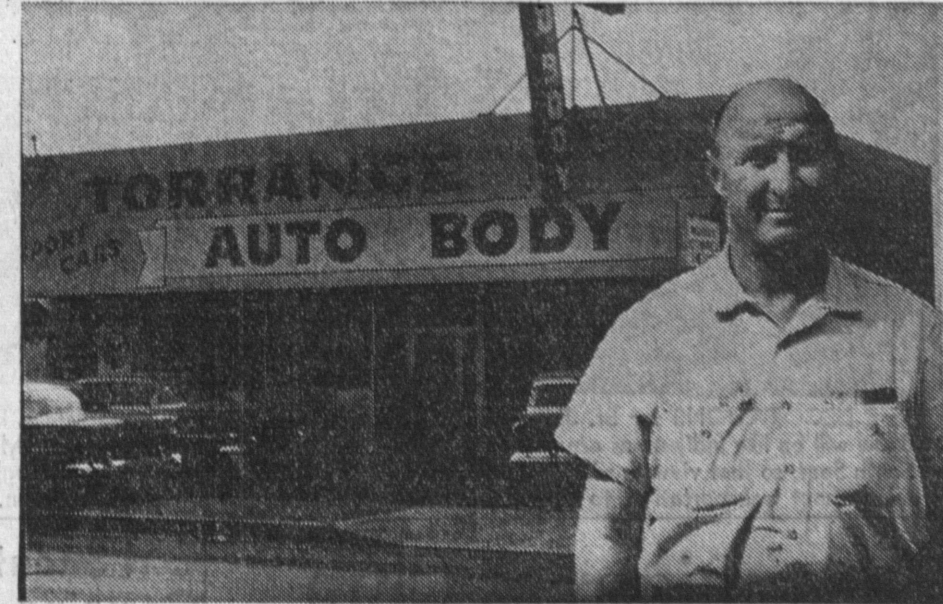
"WHO'S WHO" BUSINESS INDEX



ONCE UPON A TIME there was an unhappy family. Father, Mother, Big Brother, Big Sister, Little Brother and Little Sister hadn't had any fun for a long time. There just wasn't enough money for the whole family to go out together. But one day Father said, "Come Family, I have a surprise for you." They all climbed into the family car, and Father drove them to the Harbor Drive-in Theater. At the ticket office Father gave the man just \$1.50 for the whole car full. The family saw some fine pictures which Les Wuestwald, manager and part owner of the Harbor Drive-in Theater, had chosen for families just like theirs. Your family can have fun together, too. Harbor Drive-in Theater, 2332 South Vermont, near Sepulveda, is open seven days a week. It has a 730-car capacity. All of the speakers have just been rewired. The box office opens at 6 p. m. and the show starts at 6:30 p. m. For the program, just call TE-48501.



Specializing in Crown Transmissions—One of the largest transmission services in the Bay area is Crown Transmission Exchange, 1838 West Redondo Beach Blvd., Gardena. Specialists in transmissions, they have a complete line of all makes and models which are new and used for wholesale only. Service station owners and garages can pick up transmissions from an inventory of more than 25,000 new and good used ones. A 90-day or 6000-mile guarantee goes with each transmission. Twenty-five years in the business is also a guarantee of the best service at Crown Transmission Exchange. Opened last March, Hal Resnick is the proprietor and he has a staff of six to serve the customers. Pick-up and delivery is part of the good service. Open week days from 7:30 a. m. until 5 p. m. and Saturdays from 7:30 a. m. until 12 noon, Crown Transmission Exchange staff is ready to serve you, the garage or service station owner.



EXPERIENCE AND ABILITY are qualifications which are absolutely necessary in the auto reconstruction field. The quality of work done on a car will determine its value. Pete Salmon, owner of Torrance Auto Body, 1766 W. Carson, Torrance, his shop manager, Rico, and his staff of expert metalmen and painters have years of experience as well as innate ability in the auto reconstruction field. They have been in the South Bay area for many years, but recently opened their shop in Torrance. Their new shop is modern in every detail. At their new shop, custom painting as well as complete auto body reconstruction work can be completed. Both domestic and sports cars are handled with equal care and ease at Torrance Auto Body Shop. No job is too large or too small for them to handle. Torrance Auto Body is approved by leading insurance companies, so drive in for a free estimate. Loan cars are available free of charge. For fast, courteous service, go to Torrance Auto Body, 1766 W. Carson, Torrance, or call FA 8-9080 or FA 8-9081.

APPAREL—WOMEN'S

DOREE-ANN STYLE SHOP

"Style Plus—Minus Prices." Everything in Ladies' Wear—Sports Wear, Dresses, Sweaters, Lingerie, Hosiery, Blouses, Costume Jewelry, Alterations.
2607 Pacific Coast Highway, Rolling Hills Plaza DA 5-3133

AUTO AIR CONDITIONING

Mark IV and ARA dealer. Auto air conditioning sales and service. All makes of refrigerated units. Serving Harbor Area since 1947. Financing available.
481 Tenth St. San Pedro Phone TE 2-8393

AUTO BODY REPAIR

TORRANCE AUTO BODY

Sports Car Specialists — Featuring the Finest Workmanship on All Makes Custom Painting — Insurance Approved — Free Loan Cars
1766 W. Carson TORRANCE FA 8-9080

BARBER SHOP

PARK BARBER SHOP

Open 7 Days — "Personalized Hair Styling" — Boys Under 12, \$1.05—Adults, \$1.50 Saturday and Sunday, All Cuts \$1.50 — Two Locations
2756 Sepulveda, Torrance — 23645 Arlington, Torrance—DA 6-9877—DA 6-9833

BEAR WHEEL ALIGNMENT SERVICE GARAGE

HERBORN'S ALIGNMENT SERVICE

Official Bear Alignment Service—Brake—Balancing—Tire-Truing Complete Front End Rebuilding and Alignment—Free Pick-up and Delivery
Ron Palmer — Manager
2055 Hawthorne Blvd., Torrance FR 1-4451

BOATS

FRED & KEN SPORTING GOODS

Boat Center for the Harbor Area—Featuring FIBER GLASS BOATS Sales—Service—Parts—Complete Line of Marine Hardware and Accessories
824 W. PACIFIC COAST HIGHWAY, WILMINGTON TE 4-2350

CLEANER

BELFAIR DRY CLEANING SPECIALISTS

Dry Cleaning Specialists — We Specialize and Take Pride in Our Quality Workmanship of Your Finest Attire—Try Us and Be Convinced
2060 W. Carson Torrance FA 8-8041

DISPENSING OPTICIANS

SOUTH BAY OPTICAL COMPANY

Eye Physicians Prescriptions Filled — Lenses — Frames — Repairs — Contact Lenses Filled Complimentary Adjustments Made on Your Glasses.
TWO LOCATIONS TO SERVE YOU
EDWARD C. PRICE — Hollywood Riviera — 1712 1/2 S. Catalina Avenue FR 5-7660
CLIFFORD C. VALENTINE — Manhattan Beach — 945 Manhattan Beach Boulevard FR 4-0485

COCKTAIL LOUNGE

SERENATA—YOUR NEIGHBORHOOD BAR

Cocktail Hour 5 p. m. to 8 p. m.—Dancing Nightly Until 2 a. m.
Your Hosts Al and Bob Close
1831 Pacific Coast Hwy—DA 6-5502—2 Blocks West of Western Ave., Lomita

CONCRETE BLOCKS

FRED-LITE BLOCKS, INC.

Precision—Quality—Durability—Specializing Complete Line of Lightweight Precision Concrete Building Blocks—472 Different Sizes and Shapes in Pink, Gray, Tan.
252 E. Redondo Beach Blvd., Gardena FA 1-1481 — Wholesale to Dealer

FEED—TROPICAL FISH—PET SUPPLIES

H & H FEED STORE

Concrete Block — Sand — Gravel — Cement — Garden Supplies — Birds — Hamsters — Goldfish Tropical Fish and Supplies—Get Your Free Ticket for \$40 Aquarium & Other Prizes
2755 Arlington corner Sepulveda — Torrance FA 8-1714
Hours: 8:00 a. m. to 5:30 p. m.—Sunday 9 a. m. to 4 p. m.
Roy and Marion Huttler — Props.

JEWELERS

SHEARER JEWELERS—Your Torrance Jewelers

Your Torrance Jewelers—Fine Jewelry—Watches—Diamonds—Featuring Omega, Tissot, Elgin, Longines—Diamond Mounting and Setting—Master Watchmaker
2597 Pacific Coast Hwy., Torrance DA 5-3933

KARTS—MOTORCYCLES

HANNA CYCLE SERVICE

Go-Karts—Motorcycles—McCulloch Dealer—Repairs—Service on All Makes & Models Small Engines Rebuilt—Open 9 a. m.—9 p. m. 7 Days a Week
1931 W. Redondo Beach Blvd., Gardena DA 3-1883

LAMPS

B'S IMPORT LAMPS

Lamps—Lamps—Lamps. We specialize in custom made lamps. Your choice of colors, material, and your price range. Small collection of one of a kind antiques.
1705 1/2 S. Catalina, Redondo Beach FR 8-3093

LUMBER

LUMBER—CUSTOM MILLING

From Mill Ends to Car Loads—Fencing Material—Mouldings—Hardware—Roofing Supply—Sash—Doors—Mahogany Cut to Size
24850 Wilmington Ave., Near Lomita Blvd. TE 4-0282

MARKET

NORLEY'S MARKET

Complete Line of Quality Meats, Groceries, Fruits and Vegetables, Beer and Wine Meat Cut and Wrapped for Freezers—Open 9 a. m. & Fri., 9-7 Tues., Wed., Thurs.
1330 El Prado Downtown Torrance FA 0-3112

MOTEL

DRIFTWOOD MOTEL—Heated Pool—Cabana

Complimentary Coffee and Paper—Kitchens—Television — Room Phones Lounge Suites—Modern—Tropical—Adjacent to Fine Restaurant
3960 Pacific Coast Hwy., Torrance FR 5-0511

MUFFLER SHOP

CARSON MUFFLER CENTER

Custom exhaust work—All makes and Models—Foreign Cars—Free Installation Stock and Duals—Shock Absorbers—Now Corvair Dual Exhaust Sets for '60 and '61
415 E. Carson, Torrance TE 5-9156

ORGANS—PIANOS

NIKL MUSIC STUDIOS

Headquarters for Conn Organs—Gulbransen Pianos—Easy Terms—36 Months to Pay See Our Mile o' Music for All Makes of Organs
3820 Sepulveda, Torrance (Across from Sears) FR 5-2591

PAINT

PUNT'S PAINT CRIB

FEATURING A COMPLETE LINE OF GLIDDEN PAINT... CUSTOM MIXED COLORS WHILE YOU WAIT
22841 South Figueroa Street, Torrance Phone TE 5-9525

PET SHOP

CARSON PET SHOP

Tropical Fish and Aquariums—Pumps—Filters—Plants—Complete Line of Pet Food Dog Accessories—Dogs, Cats, Birds Boarded—We Cater to Amateur Hobbyists
249 E. Carson, Torrance Open 12-8 Weekday, 9-6 Saturday TE 4-2915

PLYWOOD

BOULEVARD PLYWOOD

Do It Yourself Materials—Custom Made Cabinets—Formica Counter Tops Made to Order—Aluminum Screens—Stains and Finishes—Hardware—"We Cut to Size"
1924 W. Lomita Blvd., Lomita DA 6-1760

RADIATOR SERVICE

WALTERIA RADIATOR SERVICE

Shaw Eggers, Owner—New and Used Radiators—Cleaning—Repairing—Recored Free Pickup and Delivery
24424 Hawthorne Blvd., Walteria FR 8-5085

RADIATOR SERVICE

TORRANCE RADIATOR SERVICE

All Work Guaranteed—One Day Service—Repaired—Cleaned—Recored Free Estimates—Pickup and Delivery
1601 W. Carson, Torrance Corner Carson and Harvard Blvd. FA 8-1702

RESTAURANT

COUNTRY BURGERS—All Food Made to Take Home

Burgers (Our Own Special Sauce)—Only Special Cuts of Sirloin Used—Tacos—Tamales—Tostados—Chile—Refried Beans—Coffee—Cold Drinks—Shakes
Corner Torrance and Hawthorne Blvd., Torrance FR 1-9083

RESTAURANT

DIXIE CAL'S STEAK AND BAR-B-Q HOUSE

Food to Go—Special T-Bone Steak, 1.95—Bar-B-Q Dinners from 2.00 Luncheons Daily, 1.05—Open Daily 11 to 11—Open Until 2 a. m. Weekends
23814 Hawthorne Blvd., Torrance FR 8-5003

RUG CLEANERS

BYRD RUG AND UPHOLSTERY CLEANERS

All Work Our Plant or Your Home—Our Specialty Wall-to-Wall Carpet Cleaning Serging and Binding—Sewing and Repairing — Tinting and Dyeing
1931 W. Artesia, Gardena FR 2-5163 — DA 4-2403

SERVICE STATION

BEN BENDA CHEVRON SERVICE STATION

Brake Service—Wheel Balancing—Road Service—Towing—Tires, Tubes, Batteries BEST BUYS IN USED CARS
21703 S. Avalon, Torrance TE 4-7420

SERVICE STATION

GEORGE PHILLIPS CHEVRON SERVICE

Service With a Smile—Tune Ups—Brake Service—Wheel Balancing—Electrical Service Free Pickup and Delivery
4605 Torrance Blvd., Torrance FR 1-4901

SERVICE STATION

GRAVENS ST. RICHFIELD SERVICE

J. W. Alcock, Proprietor — One Stop Service — Tune-up — Brake — Wheel Balancing Tire Service—Blue Chip Stamps
1529 Gravens, Downtown Torrance FA 8-9670

TELEPHONE ANSWERING SERVICE

BAY CITIES ANSWERING SERVICE

Margaret Marsha's 24-Hour Personalized Service—Business—Professional "Let Us Be Your Choice With a Smile in Our Voice"
23912 Crenshaw Blvd., Lomita DA 5-4100

THEATERS—DRIVE-IN

HARBOR DRIVE-IN THEATER

Lee Wuestwald, Mgr.—The Place to Take the Family—\$1.50 Per Car No Baby-Sitting Problem Here—Starts at Dusk—Open 7 Days a Week
23322 So. Vermont Ave. Vermont at Sepulveda TE 4-8501

TRANSMISSIONS

CROWN TRANSMISSION EXCHANGE

Wholesale Service to garages and gas stations—Repaired, Rebuilt, Exchanged—Any type, model or year. Complete line of new and used parts—Pickup and Delivery
1838 W. Redondo Beach Blvd., Gardena DA 8-5366