

Adventists Give Special Offering For Navajo Reservation Facilities

A special offering was taken at Torrance Seventh-day Adventist Church, 1610 Acacia Avenue, Saturday to aid the "forgotten Americans."

These people, Pastor Glenn Goffar explained, are the Navajo Indians living on a reservation stretching over Arizona, New Mexico and southern Utah.

Many of these people live on starvation and undernourished diets which leads to lightning-swift attacks of disease. Many Navajo youngsters do not have the opportunity to attend school.

"America is remembering the underprivileged waifs of the Laotian jungle and the African veldt but in many cases it is forgetting the Indian on our own doorstep from whom our land originally came," Goffar noted.

"This special offering," the minister explained, "will help maintain and extend two facilities operated by Seventh-day Adventists in the northern and southern areas of the Navajo reservation."

A mission and hospital is maintained at Monument Valley, Utah, in the North and a mission school at Holbrook, Arizona, in the South of the reservations, Goffar said. Funds received from the Saturday offering will help in the operation and expansion of these two major facilities which aid thousands of Navajos annually.

Goffar said more than 18,000 Navajos were treated at the church's mission clinic at Monument Valley and at an outpost clinic at Mexican Hat, Utah, in 1960.

On May 4, 1961, a \$250,000, 15-bed, hospital was opened by the Adventist Church at Monument Valley to meet a need for hospital beds in a 100-mile circle of the northern part of the Navajo reservation.

"Our congregation hopes to make the Navajo a 'remembered American' through the special offering," Pastor Goffar said.

CYO Teen Girls Play Volley Ball

Twenty-seven Catholic high schools are participating in the CYO Catholic Girls' High School Athletic League volleyball this year, three more than last year, according to Alec R. Shellig, CYO athletic director.

New in the league are Pomona Catholic High, Pomona; Sacred Heart Academy, Flintridge, and St. Genevieve High, Van Nuys.

Games are scheduled until Nov. 17, when playoffs begin, under supervision of the Catholic Youth Organization. Teams in the five divisions are:

Central: Bishop Montgomery, Torrance; Immaculate Heart, Bishop Conaty and St. Mary's Academy, Los Angeles.

Eastern: Marywood, Anaheim; Sacred Heart of Mary, Montebello; Mater Dei, Santa Ana; San Gabriel Mission, San Gabriel; Bishop Amat, La Puente; St. Paul, Whittier; Our Lady Queen of Angels, Los Angeles, and Pomona Catholic, Pomona.

Southern: Marymount, Palos Verdes; St. Anthony, Downey; and Mary Star of Long Beach; St. Plus X, the Sea, San Pedro.

Valley-East: Holy Family, Glendale; Providence, Villa Cabrini and Bellarmine Jefferson, Burbank; Sacred Heart Academy, Flintridge, and Our Lady of Loretto, Los Angeles.

Valley-West: Marymount, West Los Angeles; Alemany, San Fernando; Corvallis, Studio City; Louiseville, Woodland Hills, and St. Genevieve Van Nuys.

Plan Dedication Of Trinity Scarf

"That Things May Be Done Decently and In Good Order," is sermon topic Sunday at Seaside Community Church, 230th and Ocean Ave., Torrance. Sermon will deal with the importance of little things.

During the service a new green pulpit scarf will be dedicated for use during the Trinity Season of the church year.

First worship service begins at 9 a.m. with church school meeting at the same time. Second service is at 10:30 a.m., with infant care available.

Stamp Collectors Schedule Session

Torrance Stamp Club will meet next Oct. 9, at 7:30 p.m., in the Community Building at Scott Park, 23410 Catskill Ave., Wilmington.

This meeting will again feature distribution of British Colony stamps to members of the club. All harbor area collectors are invited to attend and join in the swapping session that follows.

WORSHIP AT THE CHURCH OF YOUR CHOICE

MORE THINGS ARE BROUGHT BY PRAYER THAN THIS WORLD DREAMS OF

CHURCH OF CHRIST—3500 Emerald St., in Torrance. Schedule of services: Sunday 9:45 a.m. Bible Study; 10:45 a.m. Worship service; Young People's meeting 4:00 p.m. Sunday and Wednesday Evening Worship 7:00 p.m. Ladies' Bible class 10 a.m. Wednesday at 1532 216th St., Torrance. Preston L. Winchell, Minister. FA 6-1535.

FIRST BAPTIST CHURCH—Carson at Manuel. Rev. Morgan Gales, pastor. Robt. Dahn, assistant minister. Church phone, FA 8-5200. 9:15 and 10:45 morning worship; 9:15 Nursery through 6th grade; 10:45 Jr. High through Adult Sunday Schools; 4:30 p.m. Training Union; 7:30 p.m. Evangelistic service; Wednesday 7:30 p.m. mid-week service. Nursery for every service.

FIRST BAPTIST CHURCH—Paine and Newton Sts. in Wallerla. Rev. L. P. Husted, pastor. FR 8-1047 or DA 6-4131. Sunday school 9:30 a.m.; morning worship 11 a.m. Nursery care provided for both sessions. Inspirational Gospel Hour at 7 p.m. Wednesday 7:30 p.m. Bible exposition and prayer.

FIRST LUTHERAN CHURCH—Located on Carson St. and Flower Ave. in Torrance. Wm. J. Reider, pastor. Residence, 2550 El Dorado. Phone FA 8-3249. Church office, 1725 Flower Ave. FA 8-5884. First Church worship 8 a.m.; Sunday School, 9:30 a.m.; second morning worship, 10:45 a.m. John Wilker, Intern.

FIRST PRESBYTERIAN CHURCH OF GARDENA—1957 W. Redondo Beach Blvd. DAVIS 4-1064 Rev. R. Murray Jones, minister 1499 W. 133rd St., Gardena DAVIS 3-1215. Sunday School—1957 Redondo Beach Blvd., 9:30 a.m. Sunday Worship—1957 Redondo Beach Blvd. 11:00 a.m. (nursery care provided). Youth Fellowship—1957 Redondo Beach Blvd. Sunday—7:00 p.m.

FOURSQUARE CHURCH—Corner of Arlington and Sepulveda. Telephone, DA 4-2073. Rev. and Mrs. James P. Lowen, pastors. Sunday: Sunday school, 9:30 a.m.; morning worship, 10:45 a.m.; group services 6:00 p.m.; Y.P. Cadets (Defenders); Evangelistic, 7:15 p.m. Mid-week, Wednesday Bible study at 7:15 p.m. Public invited.

GREEK ORTHODOX—317 S. Broadway, Redondo Beach. Phone FR 8-9331. Divine Liturgy, 11 a.m. to 12 noon every Sunday. Rev. Naoum Nitsiotis. Sunday school classes at 10:30 a.m. Greek school and Bible classes every Tuesday, Thursday, 7:30 p.m.

GREYFRIARS MEMORIAL PRESBYTERIAN CHURCH (Fundamental Orthodox) 22511 South Figueroa, Torrance. Formerly of Los Angeles. Worship hours 11 a.m. and 7 p.m. every Sunday. Sunday school beginning as usual at 9:45 a.m. Bring your children (nursery). Young People's Fellowship at 6:15 p.m. Prayer Meeting every Wednesday at 7 p.m. Dr. David Calderwood, pastor. Mr. Richard Gorum, Sust. of Sunday School. Mr. Will Power, Director of Choir. Dr. David Calderwood will preach.

IMMANUEL LUTHERAN CHURCH (Missouri Synod)—705 Knob Hill Ave., Redondo Beach, near Southwood Park, west of Hawthorne, south of Sepulveda. Sunday School, 9:45 a.m. Worship service, 8:30 and 11 a.m. Pastor A. L. Scheutz. FR 8-9535 or 5-7535.

SOUTH BAY CHURCH OF GOD—17661 Yukon Ave. Phone FA 1-2674. Rev. C. L. Tierney, 17615 Yukon, Torrance. First morning service 8:30 a.m.; Sunday school, 9:40 a.m.; second morning service, 11:10 a.m.; Sunday night service, 7:30 p.m. Mid-week services, Wednesday, 7:30 p.m.

TORRANCE SEVENTH-DAY ADVENTIST—1610 Acacia Ave. Elder Glenn L. Goffar, pastor. Phone: Residence, FR 8-7371; Church office, FA 8-1540. Sabbath school, 9:30 a.m.; church services, 11 a.m.; Bible study, Wednesday, 7:30 p.m.; young people's meetings, Friday, 7:30 p.m.



7 MAGIC SALE DAYS
THURSDAY THROUGH NEXT WEDNESDAY
OCTOBER 5-6-7-8-9-10-11.

LIBBY TOMATO JUICE

LARGE
29-OZ.
CAN

15¢

LIBBY MEAT PIES

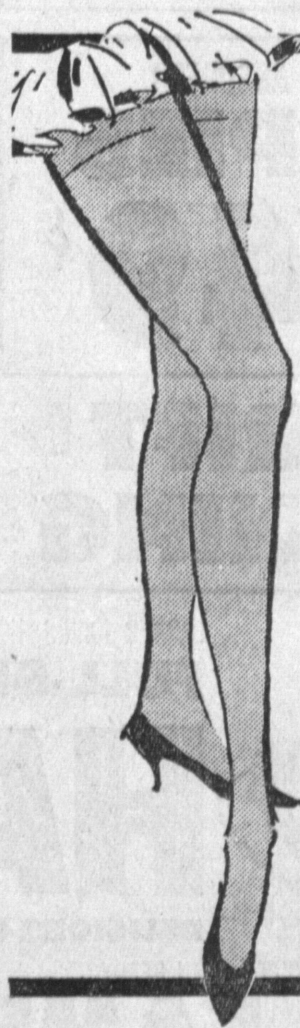
BEEF,
CHICKEN,
TURKEY
8-Ounce
Pies

15¢

SKIPPY PEANUT BUTTER

18-Ounce
Jar
Creamy or
Crunchy

49¢



10¢ SALE

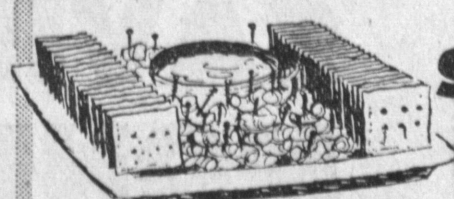
FASHION SQUARE REG. 69¢
60 GAUGE, 15 DENIER

NYLONS

BUY ONE PAIR FOR
REGULAR PRICE 69¢ AND
GET SECOND PAIR FOR 10¢

2 PAIR FOR 79¢

LATEST FALL COLORS



NABISCO
SNOWFLAKE CRACKERS
POUND
BOX **25¢**

Early Garden Peas are extra good in stews and soups.

DEL MONTE PEAS #303 can 5 FOR \$1

Pure blend honey is a younger set favorite on toast or crackers. 5 pound tin

3-BEE HONEY 5 LBS. 89¢

DOLE. Fix a fruit salad for dinner tonight. Top with cottage cheese. #303 can

FRUIT COCKTAIL 5 FOR \$1

Easiest way to keep your pots and pans shining and clean.

SOS SOAP PADS 10 PADS 25¢

Treat yourself to a hot chicken noodle lunch the Lipton way. Includes 4¢ off

LIPTON SOUP MIX 2 packages 27¢

GIFFORD. Cut them up in salads, or serve plain. Family will love them. No. 1 can

COLOSSAL OLIVES 29¢

STRAINED
GERBERS BABY FOOD

12 4 1/2-OZ. CANS \$1

KOUNTY KIST
WHOLE KERNEL CORN

2 12-OZ. CANS 29¢

LONGER BURNING
BURNING PRESSURE LOGS

10 Logs 4

JOHNSON & SHARP CHARCOAL FILTERED

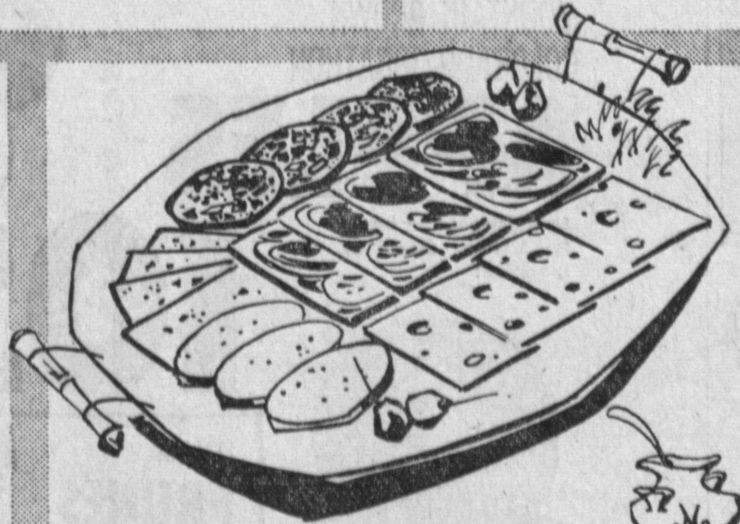
KENTUCKY BOURBON

FULL FIFTH **\$3.19**

IMPORTED ITALIAN
CHANTI WINES

FULL QUART **98¢**

DISTILLED FROM GRAIN
SARNOFF VODKA \$3.69 QUART



RATH'S BLACKHAWK DELICIOUS
SLICED LUNCHEON MEATS

SANDWICH FUN 6-Ounce Package **35¢**

WISCONSIN MILD
CHEDDAR CHEESE 59¢ lb.



LAKE COUNTY
BARTLETT PEARS

2 lbs. **25¢**

RED VELVET YACHT