

Board Elects Jackson as President

Election of Robert C. Jackson as president of the Ryan Aeronautical Company, effective Nov. 1, was announced by T. Claude Ryan, chairman of the Board, following Friday's meeting of directors. The company's 1962 fiscal year begins Nov. 1.

Ryan, who has held the positions of president and chairman, continues as chief executive officer. Jackson has been the company's executive vice president the past two years.

Duties of the chief executive officer and chief operating officer, both formerly filled by the president and chairman, are now divided between the two positions.

Jackson, who has been associated with Ryan since his appointment as director in 1957, was graduated from Stanford University in 1929. After advanced studies at Harvard Graduate School of Business, he returned to Stanford and there obtained his Masters Degree at the Graduate School of Business.

Korean Vets Get Special Dividends

Approximately 393,000 Korean veterans who have converted or exchanged their "RS" insurance policies for "W" insurance will receive a special dividend as a result of a law signed by the President, Sept. 13, announced Mort Webster, manager of VA's Southern California Regional Office.

An additional 234,000 who have not yet changed from "RS" to "W" insurance may become eligible for the dividend if they convert or exchange policies for the new type "W" insurance within two years from the date the law was signed.

Some \$65-million is available for distribution in this special dividend Webster said, to liquidate a surplus built up in this non-participating "RS" insurance. About \$35-million of this amount will go to the policyholders who have already changed to "W" insurance.

The payments are expected to average approximately \$90 for each policyholder, depending on the size of his "RS" policy, and the number of months it was in force. "RS" insurance was issued as five-year term policies to Korea veterans discharged between April 25, 1951 and Dec. 31, 1956. They could not be converted to a permanent plan of insurance and were not eligible for dividends.

A new law effective Jan. 1, 1959, established the new type "W" insurance and made "RS" policies eligible for conversion or exchange for this insurance on either a permanent or five-year plan.

Payment of the dividend is automatic and application for payment is not necessary. Policyholders who have al-



ROBERT C. JACKSON
Ryan President

Poisonous Snakes Present Problems to Hills, Deserts

Fewer poisonous snakes seem to have been encountered by residents of Los Angeles County this year than in times past. However, campers, hikers, and people who live near the hills or in desert areas should always be alert to the danger of snakebite as long as the temperature remains in the vicinity of 60 degrees Fahrenheit and above.

Poisonous snakes of several varieties are found just about everywhere in the United States. However, the only poisonous snakes that inhabit California belong to the pit viper family, and local members include the sidewinder and the Mojave and Pacific rattlesnakes.

The Pacific rattler is the one generally found in the foothills and mountains, whereas the others are native to desert areas.

Snakebite is always a serious medical emergency, but is particularly so in the case of children and elderly people. The situation is extremely critical when children receive a large dose of venom, as the ability of the body to withstand the poison is in doubt.

In the case of older people, ready converted to the "W" insurance will receive their dividend early in December.

At the same time, Korea veterans who still hold "RS" policies will receive application blanks for conversion or exchange for "W" insurance and notices advising them of the amount of their dividend should they elect to make the change.

Webster urges those eligible for the dividend as well as those who may become eligible by converting to "W" insurance, not to write or call the VA with individual inquiries.

Such requests will only delay payment of the dividends, Webster pointed out.

This is a "one-time only" dividend payment, Webster explained. It is not a regular annual dividend. "W" insurance is non-participating and not eligible for regular dividends.

Home Savings Tops Real Estate Loans in County

Home Savings and Loan Association again led all other financial institutions in volume of real estate lending in Los Angeles County during August, according to a monthly survey by the Realty Tax and Survey Co.

Home savings made 980 loans amounting to more than \$21 million. This brings the association's lending volume for 1961 to \$170 million through 7502 loans. Its total loan portfolio is in excess of \$814 million.

Home Savings, with assets nearly \$1 billion, has 24 branch offices in Southern California communities.

Northrup Institute Gives Details of New Location

Announcement of a 15-year expansion program for Northrup Institute of Technology and a master plan for its new 126-acre campus near Thousand Oaks in the Conejo Valley was made today by President Herbert W. Hartley of the engineering college now located in Inglewood.

An estimated \$25 million will be expended on the new campus designed by the architectural firm of H. L. Gogerty Associates of Los Angeles. The master plan provides for facilities to accommodate as many as 4,000 students.

When completed the campus will include all of the usual academic buildings in addition to a student center, auditorium, dormitories for single students, apartments for married students, gymnasium, athletic fields and an

A feature will be an out-of-the-ordinary chapel, door amphitheater overlooking the Simi Valley with a backdrop of the San Rafael mountains.

Conejo Valley is one of the explosive centers in the nation and is being developed by the Janss Corporation, developers of Westwood Village. The entire 10,000 acres are being planned to provide the best possible working and living conditions supplemented by recreational, educational and cultural facilities.

When the college moves it expects to take with it an enrollment comparable to its present body of 1250 full-time engineering students and about 400 who attend evening sessions. The first classes to be offered on the new campus will be in the summer quarter of 1965.

Now offered are programs leading to the Bachelor of Science degree in electronic, mechanical, aeronautical and astronautical engineering. Northrup Tech was founded in 1942 and named in honor of the aeronautical pioneer, John K. Northrup.

Farmers Must Deduct Money For Insurance

Sunday is the day on which employers of agricultural labor in California must begin deducting one percent from the wages of their farm workers for disability insurance purposes.

This was stressed today by W. P. Nebergall, auditor-in-charge of the State Department of Employment's Audit District Office, Long Beach.

The one percent deduction from farm workers' wages is required under a new law passed by the 1961 Legislature. Farm workers will be covered by the same disability insurance and hospital benefits program which has covered employees of business and industry in California since 1946.

Benefits will be payable for periods of disabling sickness or injury not connected with the job, occurring on and after May 1, 1962.

Although farm workers will pay for the program through the one percent deduction on the first \$3,600 they are paid in wages, their employers are responsible for collecting the money and sending it to the Department of Employment in Sacramento at the end of each calendar quarter. In 1962 the one percent deduction will be on the first \$4,100.

Failure to deduct the one percent makes the employer liable for the full amount of the disability tax.

suction is then started. If no suction apparatus is at hand, mouth suction must be used. This is a relatively safe procedure for the person applying the suction as long as there is no abrasion in the mouth. It is advised that suction be continued for an hour or more.

If a person is alone when the incident occurs, this same technique may be used. If possible because of the location of the bite, it is advised that pressure be exerted to press out the blood and venom. When necessary, walk for help but do not hurry.

Golf Tourney Entries Due

Entries in the 10th annual Los Angeles City Senior Men's Golf Tournament, co-sponsored by the Municipal Golf Association and the City Recreation and Park Department, must be in the hands of the committee in charge of arrangements for the event by 5 p.m. Oct. 10, it was reported this week.

The three-day, medal-play tourney will be staged on Griffith Park's challenging Harding Course, with 18-hole qualifying rounds slated Tuesday or Wednesday, October 17-18, and windup 18-hole stints scheduled Thursday, October 19, according to MGA President J. C. Cunningham, who is chairman of the tournament committee.

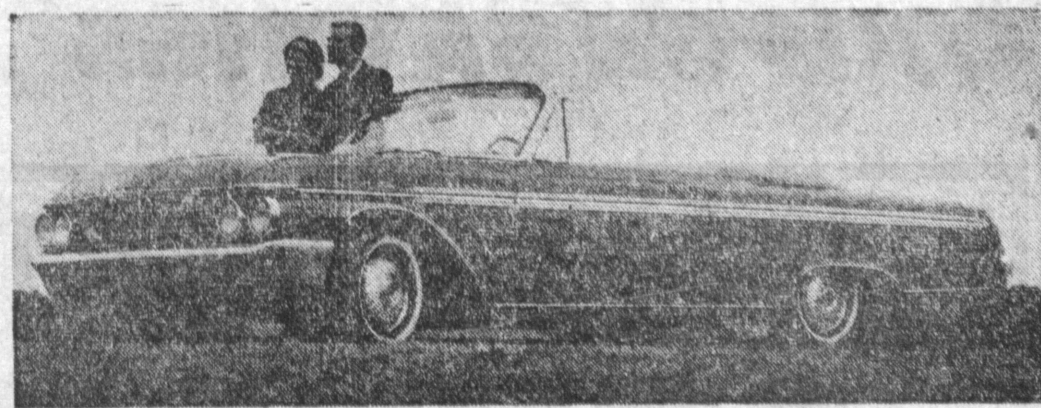
Completed entry blanks, and fees, should be mailed to the Golf Division, Recreation and Park Department, 3191 W. Fourth St., Los Angeles 5, or handed to starters at the Griffith Park, Rancho, and Sepulveda Dam Park courses, Cunningham said.

Competition in the tourney will be in the following age groups: Division I, 50 to 54 years of age; Division II, 55 to 59; Division III, 60 to 64; Division IV, 65 to 69; and Division V, 70 years of age and over.

In addition to the trophy for the champion and the oldest linkster entered in the meet and to low-gross and low-net winners in each of the five divisions, Cunningham reported.

Awards will be presented at a buffet banquet slated immediately following the last match, Oct. 19, Cunningham stated.

Use Press classified ads to buy, rent or sell. Phone DA 5-1515.



1962 FORD GALAXIE line includes the 500 Sunliner convertible, one of 12 styles of the Galaxie. The new car is slightly shorter and narrower than 1961 models, while passenger

compartment remains the same. Sunliner top is anchored at each roof bow to prevent "ballooning" when underway. New Fords will be on display at Vel's Ford, 1600 Cabrillo.

Vel's New Ford Show Thursday

In conjunction with Vel's Ford gala new car showing Thursday, each adult will be given absolutely free, Vel's Free Service Check, good for \$3 of mechanical service on any car as an introductory offer to Vel's new enlarged service department.

New Ford's, including the Galaxie line, will be on display beginning Thursday. Vel's is located at 1600 Cabrillo, Torrance.

Fund Campaign Kick-Off Held

Southwest Association for Retarded Children held a Luau recently at Lennox Park. This was the Kick Off for the Fall Building Fund Campaign, which will climax Nov. 4 at Gardena Elks Club with a dinner-dance.

Money raised will go to the Building Fund, to be used for an Activity and Training Center to serve Inglewood, Lennox, Hawthorne, Lawndale, Torrance, El Segundo, Manhattan Beach, Hermosa Beach, Redondo Beach, Rolling Hills and Palos Verdes Estates.

An association meeting will be held on Oct. 5 at Columbia School, 4502 W. 186th St., Torrance.

Slight Increase In US Bond Sales

Southern California sales of United States savings bonds for the January through August period totaled \$120,920,984 in a county-by-county tally in the midst of a new campaign to increase their sales to support the growing defense effort.

Sales for the same period of last year were \$119,025,500. For August of this year they were: \$15,380,658, up 3.5 per cent over August, 1960.

JUST ARRIVED!

ALL NEW 1962 STEREO VALUES!

DON'T COMPROMISE

when you can own

WORLD FAMOUS QUALITY

ZENITH

High Fidelity Stereo

FOR ONLY \$14.00 Per Month

The *Royalcraft* Series

New stylings in fine furniture cabinetry of genuine hardwood veneers and solids

Early American Fine Furniture Console

The POLONAISE • Model SFH2605
Full high fidelity, stereo record playing instrument featuring radio with Automatic Frequency Control for drift-free FM. Early American console in genuine Mahogany veneers and solids or genuine Maple veneers and solids.

NO MONEY DOWN BANK TERMS

INCLUDING

THESE FAMOUS QUALITY FEATURES

Cobra-Matic® 4-Speed Changer with lightweight Cobra tone arm.

Dual Channel Amplifier—25 watts EIA power output, 25 watts peak power output.

4 High Fidelity Speakers—two giant size 10" woofers and two 4" cone-type tweeters.

Full Stereo Sound Controls—combination loudness and stereo balance, separate bass and treble controls.

DOWNTOWN REDONDO
212 SO. PACIFIC AVE. FR 6-3444

SOUTH REDONDO
1211 SO. PACIFIC COAST HWY. FR 8-8488

STORE HOURS
Downtown Redondo: Friday Nite 'Til 9 P. M.
Other Days: 9:30 A.M. 'Til 6 P.M.
South Redondo: Monday and Friday 'Til 9 P. M.
Other Days: 9:30 A.M. 'Til 6 P.M.

Dial a smile for a special birthday.

If the family's far apart—in Seattle, St. Louis, or in many other cities—

Direct Distance Dialing brings you together in just seconds. It's such an easy way to send best wishes on any occasion. Call often.

Pacific Telephone
PART OF THE NATION-WIDE BELL SYSTEM

Two kinds of rug dirt need two kinds of rug cleaning! Only SPENCER'S exclusive DOUBLE DEPTH CLEANING removes both kinds!

1. Removes surface dirt that dulls rug beauty!
2. Removes ground-in dirt that shortens rug life! Call for DOUBLE DEPTH CLEANING now! Free pick-up and delivery.

Wall-to-wall DOUBLE DEPTH CLEANED in your home.

Spencer's RUG CLEANERS
FRontier 1-4671
20625 Hawthorne Blvd.
Torrance