

# New Books at Torrance Library

## Fiction

"Whatever You Do, Don't Panic." By Jean Mercier. Doubleday. 192 pp. The story of a city-bred wife who, with her three small daughters, is suddenly transplanted from her beloved New York to the country.

"The Winter War." By William Wister Haines. Atlantic-Little, Brown. 247 pp. The exploits of General Nelson Miles and his 5th Regiment mark this novel of the U.S. Army's campaign against the Indians in the fatful winter of 1876.

"Error of Judgement." By George Harmon Coxe. Knopf. 181 pp. A microphone hidden in a psychiatrist's office unravels a chain of events that

lead from blackmail to murder.

Rattlesnake Range, by Peter Field. Jefferson House. 253 pp. Iut of a bitter feud and the threats of a ruthless range baron come ambush, stampede, and kidnapping, in this dramatic and thrilling story of the West.

**Nonfiction**  
"Berlin — Pivot of German Destiny." Translated and edited by Charles B. Robson. Introduction by Willy Brandt. University of North Carolina Press. 233 pp. A collection of essays bringing together interpretations of the Berlin situation as it existed prior to the current crisis, with an analysis of the factors influencing U.S. policy on the long-standing problem of Berlin.

"The Split-Level Trap." By Richard E. and Katherine K. Gordon, and Max Gunther. Bernard Geis. 352 pp. In a study of American suburban life are shown tensions that beset people living in the suburbs and the emotional problems most likely to overtake them.

"Get the Most Out of Your Best Years." By Maxine Davis. Dial Press. 224 pp. A guide to the modern American woman showing how to discover for herself a new life that lies before her in her middle years.

"For the Intellectual." By Ayn Rand. 242 pp. The philosophy of one of the most controversial writers of today whose novels (Atlas Shrugged, The Fountainhead, Anthem, We the Living) have aroused admiration and antagonism.

## Two Promoted At Plush Horse

S. Jon Kreedman, owner and operator of The Plush Horse Inn, Redondo Beach, announces the following promotions: Oliver Berthoud to vice president of hotel sales, formerly general manager of The Plush Horse Inn; Alfred D. Ucci to vice president and general manager of the Inn, formerly manager.

## Current Interest Rate Continues At Great Western

Dennis Chojnacki, assistant vice president and manager of Great Western Savings and Loan Association's South Bay office, states that Great Western will continue to pay its current interest rate of 4½ per cent per annum for the balance of the year effective Oct. 1.

Chojnacki says that the formal announcement of this action was made by Emil Seliga, executive vice president of Great Western, after the Board of Directors of the financial institution voted to continue the current high interest rate.

In making the announcement, Seliga said, "The decision to continue our 4½ per cent was largely based on the conclusion of our Board that improved business conditions will continue through 1961."

Great Western is the fifth largest savings and loan association in the nation with assets of over \$411 million and has seven major offices in Southern California. The South Bay branch is located at 16818 Hawthorne Blvd., Lawndale.

## Approve Street Construction for New Subdivision

Supervisor Burton W. Chace announced this week approval of plans and specifications for the construction of streets in a new subdivision located on the east side of Palos Verdes Drive West southerly of the Palos Verdes Estates city line.

According to Chace, the developer plans to construct 1.1 miles of new local streets, the work include excavating, grading, paving, and the construction of sidewalks, drainage structures, curbs and gutters.

Completion of the project will provide access to the 112 homesites in the development. The street improvements, Chace added, are expected to cost the developer an estimated \$108,600.

## WORSHIP AT THE CHURCH OF YOUR CHOICE

MORE THINGS ARE WROUGHT BY PRAYER THAN THIS WORLD DREAMS OF



**CHURCH OF CHRIST**—3929 Emerald St. In Torrance. Schedule of services: Sunday 9:45 a.m. Bible study, 10:45 a.m. worship service, Young People's meeting 6:00 p.m. Sunday and Wednesday Evening Worship 7:30 p.m. Ladies' Bible class 10 a.m. Wednesday at 1552 216th St., Torrance. Preston L. Winchell, Minister. FA 0-1535.

**FIRST BAPTIST CHURCH**—Carson at Manuel. Rev. Morgan Gates, pastor. Robt. Dahn, assistant minister. Church phone, FA 8-3080; 9:15 and 10:45 morning worship; 9:15 Nursery through 4th grades; 10:45 Jr. High through Adult Sunday School; 6:30 p.m. Training Unions; 7:30 p.m. Evangelistic services; Wednesday 7:30 p.m. mid-week service. Nursery for every service.

**FIRST BAPTIST CHURCH**—Park and Newton Sts. In Waverly. Rev. L. P. Husted, pastor. FA 8-1047 or DA 4-8151. Sunday school 9:30 a.m.; morning worship 11 a.m. Nursery care provided for both sessions. Inspirational Gospel Hour at 7 p.m. Wednesday 7:30 p.m. Bible exposition and prayer.

**FIRST LUTHERAN CHURCH**—Located on Carson St. and Flower Ave. In Torrance. Wm. J. Roldan, pastor. Redondo, 2550 El Dorado. Phone FA 8-3740. Church office, 1725 Flower Ave. FA 8-5884. First Church worship 8 a.m. Sunday School, 9:30 a.m.; second morning worship, 10:45 a.m. John Wilker, Intern.

**FIRST PRESBYTERIAN CHURCH OF GARDENA**—1957 W. Redondo Beach Blvd. Davis 4-1064. Rev. R. Murray Jones, minister. 1827 W. 153rd St., Gardena. Davis 2-1215. Sunday School—1957 Redondo Beach Blvd., 9:30 a.m. Sunday Worship—1957 Redondo Beach Blvd. 11:00 a.m. (nursery care provided). Youth Fellowship—1957 Redondo Beach Blvd. Sunday—7:00 p.m.

**FOUR SQUARE CHURCH**—Corner of Arlington and Sepulveda. Telephone, DA 6-2072. Rev. and Mrs. James P. Lowen, pastors. Sunday: Sunday school, 9:30 a.m.; morning worship, 10:45 a.m.; group services 4:00 p.m.; Y.P. Cafeteria (Defenders); Evangelistic, 7:15 p.m. Mid-week, Wednesday Bible study at 7:15 p.m. Public invited.

**GREEK ORTHODOX**—317 S. Broadway, Redondo Beach. Phone FRontier 5-8913. Divine Liturgy, 11 a.m. to 12 noon every Sunday. Rev. Naoum Nttilofis. Sunday school classes at 10:30 a.m. Greek school and Bible classes every Tuesday, Thursday, 7:30 p.m.

**GREYFRIARS MEMORIAL PRESBYTERIAN CHURCH** (Fundamental Orthodox) 22511 South Figueroa, Torrance. Formerly of Los Angeles. Worship hours 11 a.m. and 3 p.m. every Sunday. Sunday school beginning as usual at 9:45 a.m. Bring your children (nursery). Young People's Fellowship 4:15 p.m. Prayer Meeting every Wednesday at 7 p.m. Dr. David Calderwood, pastor. Mr. Richard Goron, Supr. of Sunday School. Mr. Will Power, Director of Choir. Dr. David Calderwood will preach.

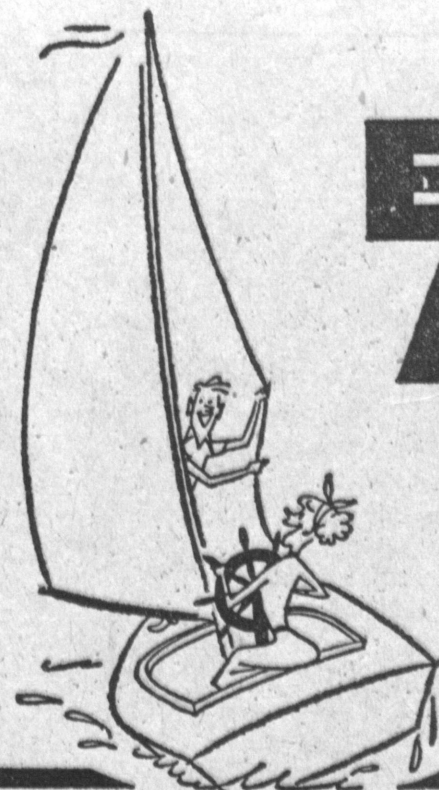
**IMMANUEL LUTHERAN CHURCH** (Missouri Synod)—705 Knob Hill Ave., Redondo Beach, near Southwood Park, west of Hawthorne, south of Sepulveda. Sunday School, 9:45 a.m. Worship service, 8:30 and 11 a.m. Pastor A. L. Scheutz. FRontier 5-9535 or 5-7535.

**SOUTH BAY CHURCH OF GOD**—17661 Yukon Ave. Phone FA 1-2674. Rev. C. L. Tierney, 17615 Yukon. Torrance. First morning service 8:30 a.m. Sunday school, 9:40 a.m.; second morning service, 11:10 a.m. Sunday night service, 7:30 p.m. Mid-week services, Wednesday, 7:30 p.m.

**TORRANCE SEVENTH-DAY ADVENTIST**—1610 Acacia Ave. Elder Glenn L. Goffar, pastor. Phone: Residences, FR 5-8731. Church office, FA 8-1540. Sabbath school, 9:30 a.m.; church services, 11 a.m.; Bible study, Wednesday, 7:30 p.m.; young people's meeting, Friday, 7:30 p.m.



Magic Sale Days  
Thursday through the following Wednesday  
September 28, 29, 30, October 1, 2, 3, 4



# EVERY DAY A SALE

...and so much to choose from... meats, crisp perfect produce series, all conveniently packaged. 7-Day specials are an added bonus. AND BEAUTIFUL BLUE C

FLAV-R-PAC  
**FROZEN CORN**  
10-ounce Package  
**10¢**

VINE RIPENED FLAVOR  
**DEL MONTE CATSUP**  
14-oz. Bottle  
**2 29¢**

DELICIOUS  
**ASSORTED JELLY**  
Regular Package  
**4**

ALL VARIETIES REGULAR PACKAGE  
**SWANSON'S DINNERS**  
**49¢**

YELLOW CLING Sliced or Halves  
**HUNT'S PEACHES**  
No. 2  
**4**

**DAILY DIET DOG FOOD**  
TALL CANS  
**18¢**

Creme Pac is high quality at low cost. It's as delicious as can be.  
**ICE CREAM**  
Flav-R-Pac means perfect strawberries everytime.  
**STRAWBERRIES**  
Solid Pack is the best for taste and flavor. Quality too.  
**HUNT'S TOMATOES**  
Half Gallon  
**59¢**  
Reg. Pac  
**19¢**  
No. 2 1/2 Cans  
**4 39¢**

**CARNATION POWDERED MILK**  
Makes 8-Quarts  
**69¢**  
F&P QUALITY KOSHER or REGULAR  
**DILL PICKLES**  
22-oz. Jar  
**29¢**

Ma Perkins is quality on your table on a small budget.  
**CREAMED CORN**  
Ma Perkins is quality on your table on a small budget.  
**SWEET PEAS**  
Ma Perkins is quality on your table on a small budget. Cut  
**GREEN BEANS**  
If you're not using Vano you're working too hard. Includes 6c off.  
**LIQUID STARCH**  
303 Can  
**6 For \$1**  
303 Can  
**6 For \$1**  
303 Can  
**6 For \$1**  
HALF GALLON  
**39¢**

STAHL MEYER  
**CORNED BEEF HASH**  
15 1/2-oz. Cans  
**3 \$1**

IT'S DELICIOUS  
**KNUDSEN'S COTTAGE CHEESE**  
PINT  
**39¢**

The High Quality Liquid  
**SWAN DETERGENT**  
22-ounce Size  
Price includes 10c off  
**55¢**

GIFFORD, Flavor Perfect  
**JUMBO RIPE OLIVES**  
TALL CANS  
**4 \$1**

**JUMBO LOW SUDS** — For Automatics  
JUMBO  
Price Includes 20c Off  
**\$2 09**

FINLEY'S ORIGINAL  
**LONDON DRY GIN**  
DISTILLED FROM GRAIN  
**\$2 98** FULL FIFTH  
10 Year Old, Kentucky Preferred, 86 Proof  
**Straight Bourbon WHISKEY**  
**\$3 99** FULL FIFTH  
CHAVEL BLANC, FESTIVE  
**CHAMPAGNE**  
or Pink Champagne or Sparkling Burgundy  
**\$1 79** FULL FIFTH

NEW LOW PRICE!!  
**ROD'S DRESSINGS**  
BLUE CHEESE — 1000 ISLAND, SOUR CREAM  
8-ounce Jar  
**39¢**  
ROQUEFORT CHEESE... 49¢  
GREASELESS TASTY Oscar Mayer's Smokey Link  
**SAUSAGE**  
12-ounce Package  
**65¢**  
JUST HEAT & EAT  
**Borden's Biscuits**  
6 Tubes of 10 Biscuits  
**59¢**

**CRISP & DELICIOUS Large Stalk CELERY**  
**10¢**