

WE CAN SAVE YOU MONEY

Decorative and Functional Cabinets • Shelving
YOU ARE WELCOMED TO SEE THIS WEEK'S

Special UTILITY CABINET
12x12x36

Factory Discount Prices

VARIATION IN WOOD CO.

2019 LOMITA BLVD.

LOMITA FR 5-6050

Open 9:30 a.m. to 9 p.m.
Monday Through Friday

Saturday

9:30 a.m. to 5:30 p.m.

Del Amo Shopping Ctr.

Hawthorne Blvd.

Lomita Blvd.

Robert A. Ruth Teaches Banking

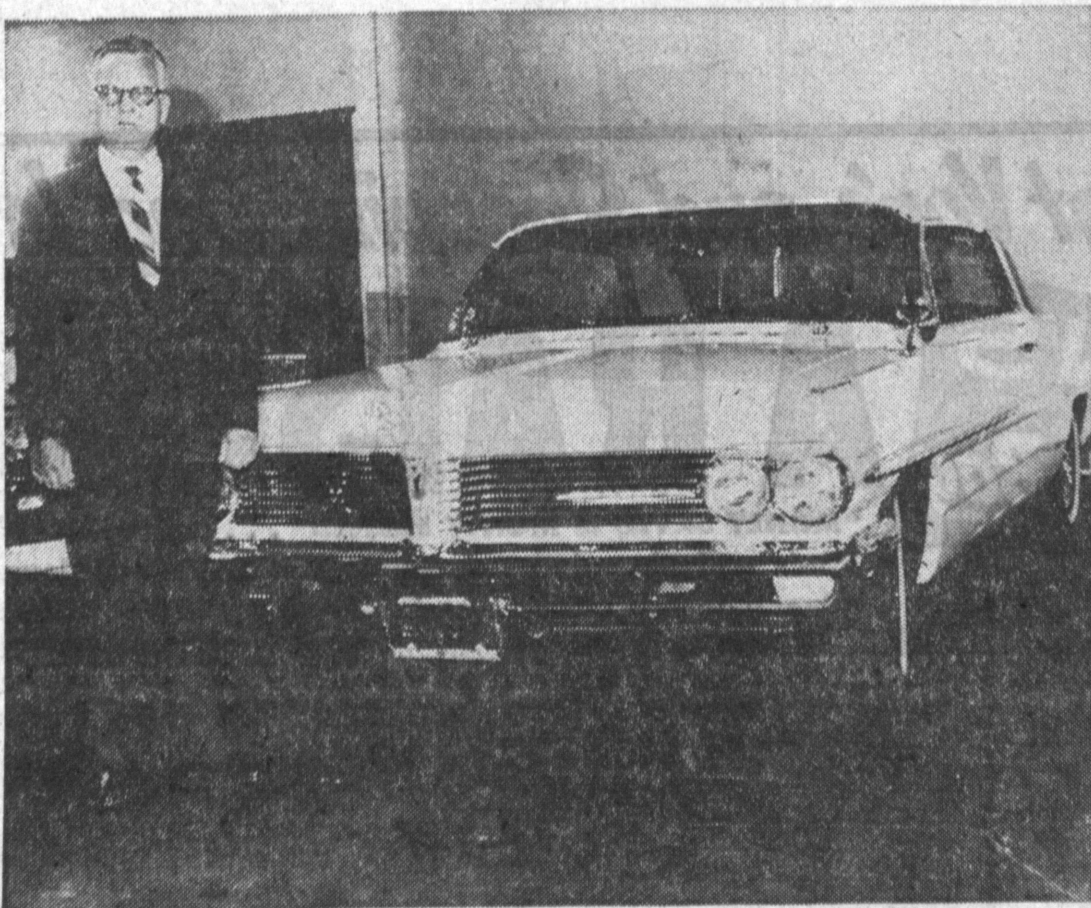
Robert A. Ruth, 18911 Patronella Ave., Torrance, has been appointed instructor of a 14 week "banking school" to be conducted here. Ruth is assistant vice president and controller of Pacific State Bank.

Principles of banking operations will be taught by Ruth in the concentrated educational sessions designed to provide a wide range of information on all aspects of banking to a group of 30 "pupils" in own banking careers.

The program is one of 33 being conducted under the American Institute of Banking.

The Hawthorne course under Ruth's supervision is being held at Bank of America, 203 Hawthorne Blvd., from 7 to 10 p.m. each Thursday evening.

Subjects to be covered by Ruth in his discussions will include personnel procedures, bank administration, employee orientation, etc.



SNEAK PREVIEW of the 1962 Pontiac is taken by Frank Reiman of Reiman's Pontiac, 412 W. Anaheim, Wilmington. New Pontiacs will appear for sale at dealers shortly.

Record Sales Continue on Peninsula; New Grandview Construction Planned

New plans which have accounted for a record sales pace at Grandview Rolling Hills will be featured in a section of 152 peninsula homes to be started in a couple of weeks by Grandview Building Co. in what is termed "a prime ocean-view location" by William C. Kulow, director of sales.

CONSTRUCTION BEGINS
Construction will begin on

Torrance Grad In USC Band

Recent Torrance High School graduate, John Alter, of 1742 Watson St., Torrance, now enrolled in USC, has been accepted in the Trojan band.

Alter, son of Gerald L. Alter, plays trumpet, has earned four letters in band for four years in the Torrance High School Band, and has been in the concert band of the Torrance Area Youth Band, under James Van Lyck.

the west side of Granvia Al-tamiro, known as "the gateway to the City of Palos Verdes Estates."

The new unit will be the westernmost built by Grandview, which has sold more than 1500 homes on the peninsula. There will be additional exterior stylings by architects Harris and Rice, AIA.

Grandview Rolling Hills, nearing a sellout of its 82 homes off Silver Spur Rd., still offers some three and four bedroom models, with inside living space to 1816 sq. ft.

They are priced from \$24,000 with monthly payments from \$136. Completion and occupancy are planned for November.

Immediate occupancy is now available for many models in the Country Club Unit of Grandview Palos Verdes, Estates.

Seven furnished model homes featured at the former

may be visited by driving Crenshaw Blvd. to Silver Spur Rd. and turning right just past the shopping center.

Homes are located south of the Palos Verdes Country Club's golf course, on high ground, and are priced from \$29,535. Stylings include split levels, and the Deauville, an award-of-merit national winner with 2127 sq. ft. of inside space.

WESTERN SECTION
West Palos Verdes Estates is located near the peninsula's southwest juncture of Hawthorne Blvd. and Palos Verdes Dr. West, with views of the ocean and Catalina Island to the south. Homes are priced from \$34,900 and may be purchased by veterans on VA terms.

Use Press classified ads to buy, rent or sell. Phone DA 5-1515.



ON PENINSULA: Shown is one of many attractive stylings at Grandview Palos Verdes, where some models are now available for occupancy. Over 1,500 families have purchased homes by Grandview on the picturesque peninsula.

JODY'S COFFEE SHOPS

1914 SO. PACIFIC COAST HWY.
21180 HAWTHORNE BLVD.

*NEIGHBORHOOD EARLY DINNER SPECIAL

Our Regular \$1.95

NEW YORK CUT

OR

DELMONICO

STEAK DINNER

\$1.00

FROM 3 TO 5 MONDAY THRU SATURDAY AFTERNOONS

*YOU MUST ASK FOR IT

JODY'S COFFEE SHOPS

1914 SO. PACIFIC COAST HWY.
REDONDO BEACH
and 21180 HAWTHORNE BLVD.
TORRANCE

O'Hare Appointed Insurance Exec

Torrance resident Stephen T. O'Hare has been named a superintendent in Pacific Mutual Life Insurance Company's field office administration department. The promotion was announced this week by E. E. Brown, department director.

Brown said O'Hare will take responsibility for administering the department's personnel and salary policy. He will also direct all field office systems and procedures.

The Torrance man holds a bachelor's degree in social studies from St. John's University and a master's degree in education from Stanford. Active in community affairs, O'Hare has been the American Cancer Society's special gifts chairman for downtown Los Angeles.

ENROLL NOW! FALL TERM

QUIT GLANC'IN...START DANC'IN!

Three Arts Dance Studio

2252 W. CARSON ST., TORRANCE

FAirfax 8-4774

• Tap

• Ballet

• Ballroom

• Modern Jazz

• Hawaiian

• Pre-School • Pre-Teens • Teens • Adults

Hope to see you this week! Studio has been remodelled for you! The latest dances, costumes and music. Movie showing, and Christmas Show coming up soon. Call for appointment.

WAREHOUSE DISPOSAL

SAVE MORE THAN EVER!

ZENITH

19" PORTABLE TV



Similar to Photo Above

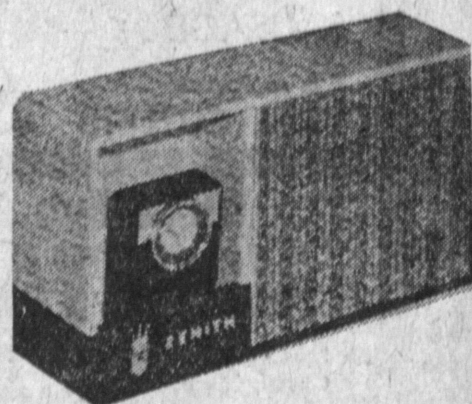
\$169⁶³

WAREHOUSE PRICE

- ★ SOUND OUT FRONT SPEAKER
- ★ TOP CARRY HANDLE
- ★ 172 SQ. IN. RECTANGULAR PICTURE AREA
- ★ HANDWIRED POWER TRANSFORMER
- ★ BEST QUALITY FOR BEST SERVICE

MODEL H2101F

BANK TERMS
WE SERVICE ALL SETS



Model HP550L

ZENITH

Stereophonic 4-speed automatic AC phonograph with removable front mounted remote speaker that has a special hook up for use with many transistor radios as shown above.

\$109⁹⁵

WAREHOUSE PRICE

TV Studio

2223 Torrance Blvd.

Downtown Torrance—4 Blks. East of Crenshaw

FA 8-6856

STARTS
TODAY AND
CONTINUES
THRU
SATURDAY,
SEPT. 30

SALE

- ★ CUSTOM-MATIC RECORD CHANGER
- ★ AUTOMATIC CHANGER SHUT-OFF
- ★ AUTOMATIC RECORD INTERMIX
- ★ DUAL NEEDLE CERAMIC CARTRIDGE
- ★ STEREO DUAL CHANNEL AMPLIFIER
- ★ DUAL QUALITY SPEAKERS



OPEN EVENINGS
'TIL 9 P.M.