

## Non-Moving Aircraft Parts Under Study

Design of aircraft electrical power and cooling systems which have virtually no moving parts is being studied by Douglas Aircraft Company under terms of a \$120,000 contract announced recently by the Navy.

Utilizing thermoelectric principles, the systems are to operate on waste heat from jet or rocket engines to produce both electricity and a cooling source to satisfy aircraft or missile power and electronic cooling requirements.

The 18-month research program, to be conducted by the

El Segundo Division of Douglas for the Bureau of Naval Weapons, will cover investigations of heat sources and system utilization in the initial phase.

A second phase will include design of specific thermoelectric systems to a particular aircraft.

Thermoelectric systems are based on the unique characteristics of certain semiconductor materials to heat or cool themselves when direct electrical currents are passed through them.

The material also operates in reverse cycle, generating

electricity when heat is applied.

Based on earlier company-funder work, the Navy study will explore the potentials of venting waste exhaust heat to a thermoelectric generator to generate power for aircraft electrical systems.

Voltage from a thermoelectric generator also will be supplied to a second unit to create a low temperature source for cooling aircraft systems and cockpits.

Thermoelectric systems are potentially capable of providing aircraft power and cooling capabilities

## Germs Gain Resistance to Various Drugs

Fifteen years ago DDT was certain death for flies and mosquitoes. Then a few freak insects survived the deadly stuff and reproduced. Now we have flies and mosquitoes which lap up DDT and thrive on it.

The same thing happened with the germs that cause venereal disease and the staphylococcus germ—the one that spreads infection wildly through a hospital the instant antiseptic standards slip.

Penicillin was practically a sure cure at first—but not any more. VD germs and

staph germs have become resistant to penicillin, survive, multiply—and kill.

Now the TB germ seems to have developed the same defense. Drug resistance often develops during TB treatment when only one drug is used. That's why most patients are treated with two and sometimes three drugs.

But now drug resistance is appearing in the germs of patients who have never been treated before. At the moment, somewhere between 5 and 10 per cent of TB patients treated for the first time are found to be infected

with germs resistant to one or more of the three principal anti-TB drugs—isoniazid, PAS, streptomycin. The patient with drug-resistant germs has less chance of getting well, may infect others with his drug-resistant germs.

The odds are still in our favor for eliminating TB from do it soon. But if the number of drug-resistant TB germs increases greatly we'll be caught in a stalemate.

This means that all active TB cases must be found soon and treated properly with the right combination of drugs, continuously, for a long enough time.

## Local Talent Needed for Family Show

Local talent—singers, dancers, and instrumentalists—will be auditioned by International Family Festival program directors, Phil La Loggia and Mrs. Wilene Taylor, Friday, Sept. 22 at the Eagles Hall, 128 So. Catalina, Redondo Beach, starting at 7:30 p.m.

Professionals and amateurs, young and old, groups and individuals, are welcome to show their skills.

"We wish to explore the talents of our own community before going into the L. A. area for performers. The festival is both for and by South Bay families," La Loggia said.

A blending of music and dance brought to the United States from numerous continents will compose the festival program of October 21 and 22 at Aviation High School.

The directors request that performers bring necessary records or accompanists. A piano and record player will be available. Costumes suitable for acts should be worn. Photographs of performers selected for the program will be taken at the auditorium.

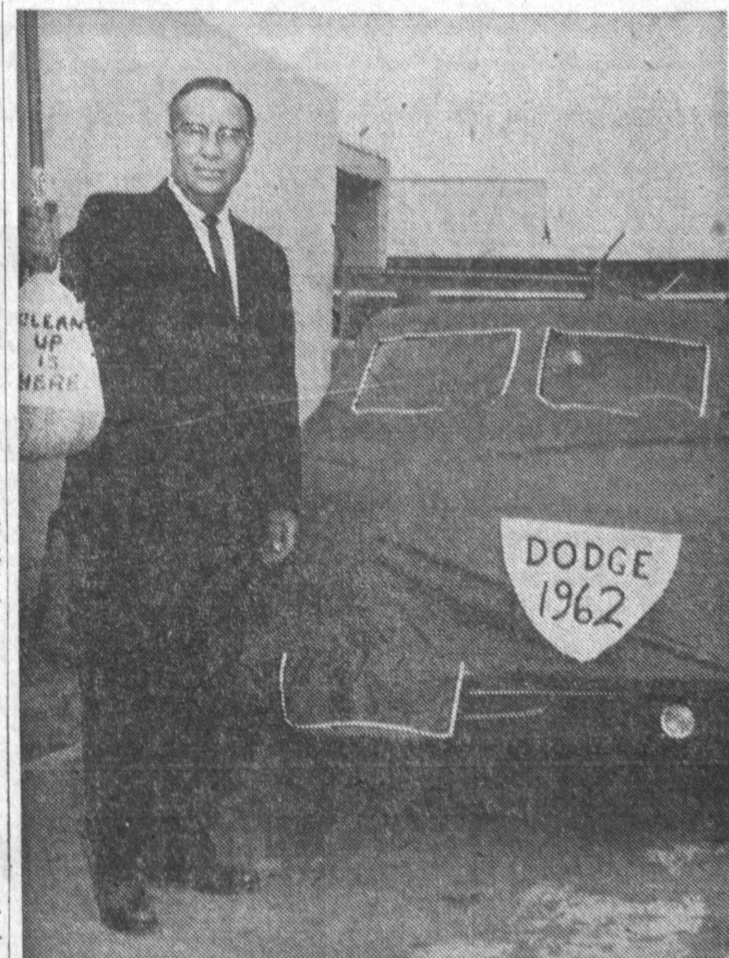
## R. L. Anthony At Water Meeting

R. L. Anthony, recently named executive assistant at Southern California Water Company, is attending a 10-day Utility Management School being conducted by Stone and Webster Engineering, Inc., Sept. 11 to 29, in New York City.

Anthony's duties with the water company include acquisitions, extensions of contracts, advertising and promotion, municipal services and handling of regulatory matters.

He resides at 4139 West 177th Street, Torrance.

Use Press classified ads to buy, rent or sell. Phone DA 5-1515.



IT'S CLEAN UP TIME: Traditional emblem of model year-end savings, the Clean Up Broom is held by Tom Rody, president of Tom Rody Dodge, 6611 S. Vermont, Gardena. The 1962 car under wraps points out his need for more space in the near future; and also points up one of the main reasons why you save lots of money buying a 1961 model now!

## Nevins Favors You Can Make Tax Dept. For "Seniors" A 'Look-Alike' Look Different

Property tax deferment for the senior citizen is a "must," according to Richard Nevins, Southern California member of the State Board of Equalization.

"A spectacular decision in the State District Court of Appeals in the Fifield Manor case gave property tax exemption to homes for well-to-do aged," he told the National Association of Tax Administrators at their recent annual conference in Seattle.

"Only the most expensive and luxurious homes will not qualify as being charitable," he continued. "This broad decision made only 1 of 137 homes for the aged taxable this year."

He further stated that the lowest income senior citizen has his property taxes paid through the old age assistance program.

"However, the self-supporting or relation-supported elderly person living in his own home is now paying his own property taxes. He has no dignified assistance program to help him when he is in need. Yet, he constitutes the largest portion of the 450,000 California citizens families residing in their own homes. This group will increase to 570,000 in 1970," Nevins reported.

"To forestall radical changes in the State Constitution affecting the property tax," he added, "all remedies should be explored to preserve the basic spirit of the ad valorem property tax which falls on their homes."

The California State official advocated the development of a program by legislators and tax administrators to preserve the dignity of the individual—a program of property tax deferment limited to property owned and occupied by the aged person claiming the special treatment. "However," he cautioned, "tax levying jurisdiction should not bear the full costs of the program."

### THIRD CLASS MAIL

Two out of every three users of third class mail are firms that do a total business of less than \$500 thousand a year. Over half the money they spend for advertising goes to the U.S. Post Office Department for postage.

Now home builders are avoiding the pitfalls of "look alike" developments of a few years ago.

That is the contention of Dana Richardson, home improvement specialist for the Flexalum division of Bridgeport Brass Company. Richardson finds that development builders of today offer a choice of several models to prospective purchasers rather than one basic design and are making much better use of landscaping techniques to set homes apart.

Owners of attached or older homes in "look alike" developments can also do something now about attaining more individuality, Richardson adds. He lists four areas that offer opportunities for eliminating sameness:

1. **The Doorway.** A minimum investment in a colorful aluminum door canopy can go a long way the Flexalum specialist says, in setting off the house from others on the block. Repainting the door in a different color or installing a paneled door might also be considered.

2. **The Front Porch.** An aluminum porch awning in the same style as the doorway canopy will add to the decor and provide a much-needed comfortable outdoor living area. Colorful porch furniture also contributes to attached home individuality.

3. **Windows.** Shutters, window-sill planters and aluminum "roll-up" awnings might be considered for front windows. The roll-up awnings require no winter storage and can be adjusted in seconds to permit the precise amount of light required to enter.

4. **The Front Garden.** Many attached homes have a small lawn area in front. A rock garden, or a different shrubbery or floral arrangement can be used to combat sameness.

All in all, Richardson says, enough exterior decorating possibilities exist to give families who live in "look alike" homes the individuality they need to enhance property values and to make ownership more satisfying.

Use Press classified ads to buy, rent or sell. Phone DA 5-1515.

**50% off** **Avalon Sundries**  
21732 S. AVALON BLVD. WILMINGTON  
**MUST CLEAR OUT PRESENT STOCK TO MAKE ROOM FOR NEW CLOTHING STORE . . .**

## Partial Listing of Items on Sale

**CLOTHING**  
LADIES' and GIRLS'  
BATHING SUITS  
MEN'S and BOYS'  
SWIM TRUNKS  
LADIES' DRESSES  
LADIES' BRASSIERS

**MISCELLANEOUS**  
SUNDRIES  
FOUNTAIN SPECIALS  
ICE CREAM SUNDAE  
17c  
GIANT MALTS  
19c

**CLOTHING**  
LADIES' and GIRLS'  
SHORTS and BLOUSES  
MEN'S and BOYS'  
SHIRTS  
CHILDREN'S WEAR  
NYLONS

Money Orders Written — Payroll Checks Cashed

**WILL BE OPEN DURING REMODELING**

HUNDREDS OF OTHER ITEMS TOO NUMEROUS TO LIST IN THIS SPACE

**Avalon Sundries**  
21732 South Avalon Boulevard Wilmington

Hurry for Best Selection

Sale Continues Until Stock Is Sold

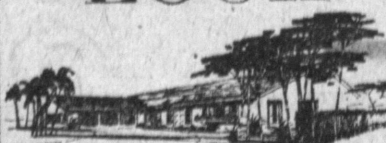
**50% Off**

### LIFE



LIFE Magazine has chosen Builder Robert H. Grant as a member of its 1961 Homebuilding Marketing Council—the only builder in the Los Angeles metropolitan area to be so honored. The Robert H. Grant Company's new STAR-DUST HOMES offer 3 and 4 bedrooms, 2 baths, large living rooms, family room or dining area, and such features as hardwood floors, acoustic ceilings, Gaffers & Sattler built-in gas ranges, disposers, mahogany cabinets and paneling. \$15,300-\$17,000, no down to vets; FHA and VA terms. From Santa Ana Frwy., s/on Beach Blvd. past Knott's Berry Farm 7 miles, right on Boka to model homes, Huntington Beach Sales Office phone: TW 7-3676.

### LOOK



LOOK Magazine honors BRENTWOOD GARDENS for the proved-quality brand materials used in these homes. The Larwin Company, builder, also holds awards from the Brand Name Foundation, the National Association of Home Builders, HOUSE & HOME Magazine, and Station KTTV. BRENTWOOD GARDENS offers 3- and 4-bedroom homes equipped with Holly forced air gas heating with summer cooling switch, decorative grille walls, ceramic tile, disposers, O'Keefe & Merritt built-in gas ranges. Near beaches and site of proposed Dana Point Marina. From \$20,250 to \$29,500; FHA, VA, Cal-Vet, and conventional financing. Just s/o Laguna, near Santa Ana Frwy. Sales Agents: Walker & Lee. Phone: GY 3-1882.

### POST



THE SATURDAY EVENING POST for the past 3 years (1959, 1960, and 1961) has given its Blue Ribbon Home Award to Merrill Butler, Jr., and L. B. Harbour, Jr., the only Southern California builders to receive that distinction. Butler-Harbour's new development—DANA POINT KNOLLS—stars center patio planning in spacious homes with 3 and 4 bedrooms, family room, 2 and 3 baths; up to 2,184 sq. ft. living area. Kitchens equipped with O'Keefe & Merritt built-in gas ranges. Near beaches and site of proposed Dana Point Marina. From \$20,250 to \$29,500; FHA, VA, Cal-Vet, and conventional financing. Just s/o Laguna, near Santa Ana Frwy. Sales Agents: Walker & Lee. Phone: GY 3-1882.

### McCALL'S



McCALL'S Magazine's Congress of Better Living Award has been won twice by BRIGHTON-BILT HOMES—developers of PARK WEST homes in Oxnard. The new PARK WEST units feature convenient center-hall planning in home with 2 and 3 bedrooms plus den or extra bedroom, 2 baths, oversized 2-car garages with service area and storage space, thermostatically controlled forced air gas heating. Pioneer glass-lined water heaters, built-in Roper gas ranges, disposers. On large lots, parkway trees; near schools, churches, transportation. From \$14,600, vets \$95 down; FHA and VA terms available. Located at Howe and Ventura Rds., Oxnard. Sales Office phone: HU 3-9991.

### Good Housekeeping



GOOD HOUSEKEEPING Magazine selected Builder Harlan Lee's model home in his new ENCINO HILLS development for a feature story in its September issue. ENCINO HILLS offers spacious 1- and 2-story homes with 2,150-2,600 sq. ft. living area, 3, 4, and 5 bedrooms, 3 baths, sunken living rooms, large family rooms, dining areas, inner courtyards, sliding glass doors, kitchens completely built-in with such features as dishwashers, disposers, built-in Gaffers & Sattler gas ranges. All utilities are underground in this outstanding new development, south of Ventura Boulevard on Hayvenhurst. Priced from \$39,950. Phone: ST 8-8400.

*Five leading national magazines award recognition to these Southern California builders of balanced power homes...featuring the best of modern gas and electricity*

The builders represented here have each won honors from a leading national magazine. Some for the choice of quality materials—some for distinguished planning—all for the kind of building "know-how" that pays off for you in greater home value in new homes now open. One very important part of that value: Each home shown here is a BALANCED POWER home, giving you the best of both modern gas and electricity for easiest living at lower cost.

BALANCED POWER planning assigns each household

job to the power that does it most efficiently and economically for you. Modern gas does such jobs as cooking, heating and air conditioning, water heating, refrigeration, and clothes drying with utmost speed and economy. Adequate wiring provides for well-planned modern lighting, dishwashers, disposers, TV sets, radios, and other handy appliances. With this common-sense approach to modern home design, is it any wonder that over 1,000 leading Southern California builders are now building or planning 104,853 BALANCED POWER homes?

SOUTHERN CALIFORNIA GAS COMPANY

Visit the Los Angeles County Fair at Pomona—Sept. 15-Oct. 1

## SEARS CLEARANCE

### 1960 Model Silvertone Hearing Aids

All first quality hearing aids, designed to be an integral part of your glasses. Superior in appearance, engineering and hearing performance. Sears Guarantee.

	Was	Now
Model 806	\$239.00	\$ 99
Model 732	159.95	\$119

Personal and Individual Service  
Julius Kravitz  
Certified Hearing-aid Consultant

Sears, Roebuck and Company  
Hawthorne at Sepulveda — FR 1-6521