



ADMITTED—Southern California-based Standard Brands Paint Company common shares were admitted to American Stock Exchange trading today. The stock opened on 600 shares at 23-3/8. Exchange president Edward T. McCormick (left), examines map showing company's discount type retail operation

which supplies paint and decorating materials to fifteen communities in Southern California. Harold S. Chaplin, company director associated with New York brokers Sutro Bros. and Co. describes marketing operating which, has increased sales more than \$7.0 million in the past ten years.

## Double White Lines Painted Bright Yellow

The Los Angeles County Road Department has begun a program of repainting the white double center lines on all County roads with new yellow double center lines.

This policy was recently adopted by the U.S. Bureau of Public Roads for all parts of the Interstate Highway System, he said. All states and most counties have already adopted the same policy in the interest of uniformity.

Because of the many miles of striping to be repainted, this program will be a gradual one, with the yellow being painted first on the roadways where the existing white stripes are in need of repainting. Chace added, noting that this program is expected to take a year to complete.

The yellow striping will be confined to the double lines over which it is illegal to pass.

## Good Schools In Grandview Rolling Hills

A highly favorable school situation is one of the factors behind the rapid sales pace at Grandview Rolling Hills, says William C. Kulow, sales director for three Grandview-built communities on the Palos Verdes peninsula. The new development is priced from \$24,000, with monthly payments from \$136.

Homes are rising east of Silver Spur Rd. in the peninsula's north-central sector. They are close to Silver Spur Elementary School and adjacent to the site of the area's second high school, to be built in two years by the newly unified peninsula school district, Palos Verdes High School, opened this month, is less than 10 minutes by bus.

For Catholic school students, construction of new St. Peter Alcantara Parish of a church and elementary school at Crenshaw Blvd. and Crest Rd. will shorten travel distances. Marymount High School and the new Marymount College campus are nearby on the peninsula.

### Shopping Center

Grandview Rolling Hills is also conveniently located close to the Peninsula Shopping Center.

First unit offers a choice of three and four bedroom, dining or family room homes with inside living space from 1,432 to 1,816 sq. ft., in nine styles designed by the architects for the peninsula setting.

Model homes are being rushed to completion on Hawthorne Blvd., near Silver Spur, adjacent to the seven furnished models for Grandview Palos Verdes.

All plans include built-in gas ranges and ovens, with dishwashers in most, carpeting, brick fireplaces, ash paneling, ceramic tile, ash cabinets, sliding glass doors, and landscaping of front and sides.

### Country Club

At Grandview Palos Verdes, some models are now available for occupancy in the Country Club Unit, which adjoins the golf course of Palos Verdes Country Club.

Priced from \$29,535, and including split level styling, they contain three and four bedrooms and family rooms, two and three baths, with up to 2,127 sq. ft. of inside space. Trades are actively considered at this location and at West Palos Verdes Estates, community of 80 spacious residences overlooking the ocean near the intersection of Palos Verdes Dr. West and Hawthorne.

These homes are priced from \$34,900 and are available to veterans on VA terms. Immediate occupancy is offered in some.

## Shimko Joins Tech Faculty

A new personality has joined the evening division faculty at Los Angeles Trade-Technical College, this fall. He is Edward Walter Shimko, of Torrance, who will teach a class in labor relations in the industrial supervision curriculum.

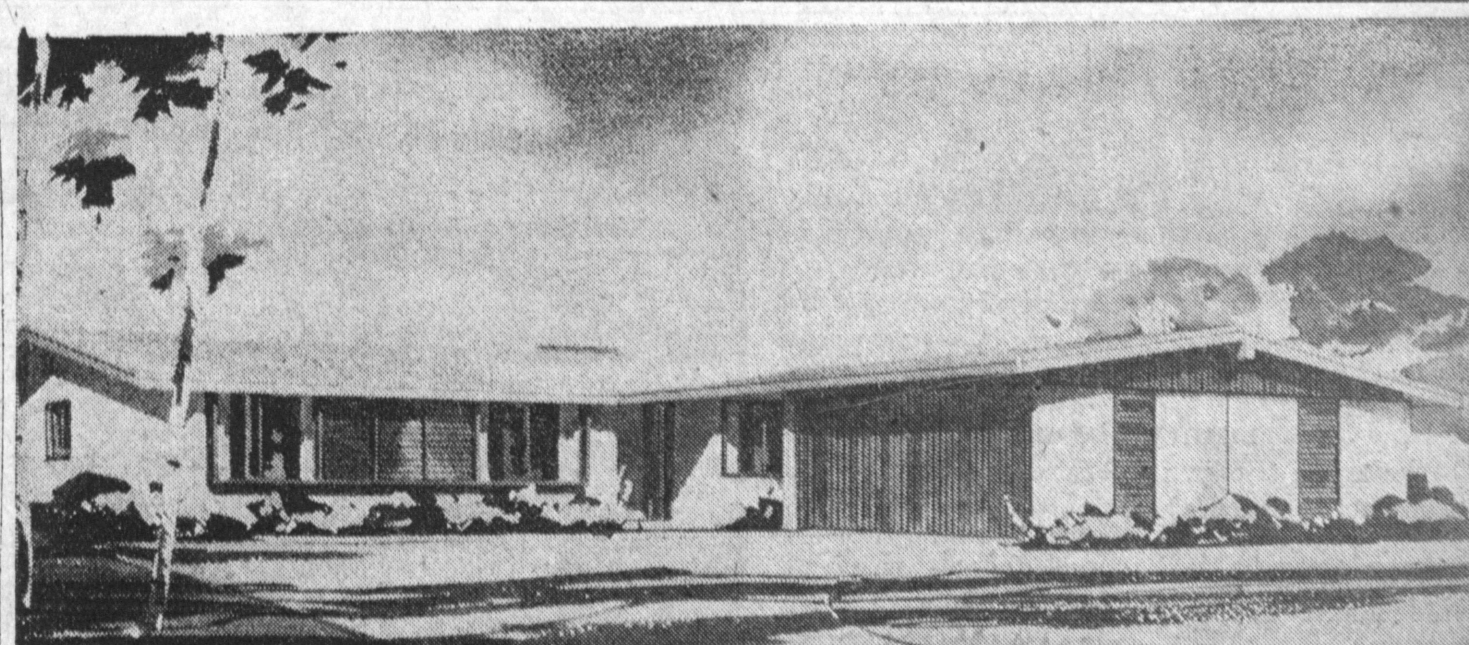
Shimko received a BBA in industrial relations from Loyola University, a MBA in personnel and industrial relations from the University of California at Los Angeles, and from 1949 to 1951 majored in electronics at the Naval Electronics School.

In addition to his teaching at Trade-Tech, he has held seminar classes at USLA in labor law, taught implant orientation for supervisors at Space Technology Labs, and currently works, during the day, as an employee relations supervisor at Space Technology Labs.

Use Press classified ads to buy, rent or sell. Phone DA 5-1515.

### LEGAL NOTICE

CERTIFICATE OF BUSINESS FICTITIOUS NAME  
The undersigned does hereby certify that he is conducting a business at 24012 S. Hawthorne Blvd., Torrance, California, under the fictitious firm name of Paul's Photo and that said firm is composed of the following person, whose name is full and place of residence is as follows:  
PAUL R. CONON, 1728 Andree Avenue, Torrance, California.  
Dated August 25, 1961  
Paul R. Conon  
Notary Public, My commission expires June 6, 1965  
Torrance Press — Sunday, August 27, Sept. 3, 10, 17, 1961.



PENINSULA HOMES: Shown is one of 9 attractive stylings at Grandview Rolling Hills, new development of spacious peninsula homes priced from \$24,000 and up, with monthly

payment from \$136. Homes include wall-to-wall carpeting, kitchen built-ins, fireplaces and ash paneling.

## Heritage Class Mark Service Sponsored By L.A. Extension

Because Americans in general and Californians in particular are such inveterate travelers, University of California Extension will inaugurate a new lecture course on "World Arts and Culture: the Western Heritage," in the South Bay area at Torrance this fall.

The arts of the Western World as revealed in backgrounds of travel will be illustrated with color slides, films and demonstrations, presented by widely traveled specialists. Dr. Arthur J. Schneider, artist and teacher in the Lawndale Elementary School and guest lecturers will instruct the course.

The new program supplements an already established number of University Extension courses in backgrounds of travel and European travel and discussion groups for travelers. Complete information concerning them is included in a new fall class catalogue, available free of charge on request to University Extension at UCLA (BRadshaw 2-6161, Station 721).

Use Press classified ads to buy, rent or sell. Phone DA 5-1515.

### SWEET TOOTH

There's nothing a black bear likes better for dessert than a young, tasty Douglas fir tree. Since 1945, West Coast tree farmers have lost more trees to black bears than they have to forest fires. The shaggy black beasts girdle the trees to get at the sweet cambium layer that lies just underneath the bark.

## JODY'S COFFEE SHOPS

1914 SO. PACIFIC COAST HWY.  
21180 HAWTHORNE BLVD.

\*NEIGHBORHOOD EARLY DINNER SPECIAL

Our Regular \$1.95

NEW YORK CUT

OR

DELMONICO

STEAK DINNER

\$1.00

FROM 3 TO 5 MONDAY THRU SATURDAY AFTERNOONS

\*YOU MUST ASK FOR IT

## JODY'S COFFEE SHOPS

1914 SO. PACIFIC COAST HWY.  
REDONDO BEACH  
and 21180 HAWTHORNE BLVD.  
TORRANCE

## ENROLL NOW! FALL TERM

QUIT GLANC'N... START DANC'N!

Three Arts Dance Studio

2252 W. CARSON ST., TORRANCE

FAirfax 8-4774

• Tap • Ballet • Ballroom • Modern Jazz • Hawaiian  
• Pre-School • Pre-Teens • Teens • Adults  
Hope to see you this week! Studio has been remodelled for you! The latest dances, costumes and music. Movie showing, and Christmas Show coming up soon. Call for appointment.

# SALE SUMMER SHADE TREES

Buy Them Now, Plant Them Now!

SPECIMEN TREES

• EVERGREEN ASH  
• BRAZILIAN PEPPER  
• EVERGREEN ELM  
• JACARANDA  
• EUCALYPTUS  
• SILK OAK  
• MAGNOLIA  
• Many Other Varieties  
YOUR CHOICE  
5-Gal. Size 6 Ft. to 8 Ft. **\$2.25**  
NOW

**\$12.95**  
15-GAL. SIZE 8' to 12' TALL

• EVERGREEN ELM  
• EVERGREEN ASH  
• BRAZILIAN PEPPER  
• LIQUIDAMBAR  
• MONTEREY PINE  
• EUCALYPTUS  
• WHITE BIRCH  
• RUBBER TREE

### WISTERIA

BLUE FLOWERING  
5-Gallon Size—  
Reg. \$6.50 **\$2.95**

RED . . . ORANGE . . . PURPLE  
YELLOW . . . Full Blooming  
**BOUGAINVILLEA**

1-Gal. 69c 5-Gallon Size **\$2.95**

### YUCCAS

SINGLES—  
5-Gallon Size **\$3.50**  
DOUBLE HEADS **\$4.50 to \$6.50**  
5-Gallon Size

### YOUR CHOICE

• BLOOMING FUCHSIAS  
• OLEANDERS (Single Red)  
• HIBISCUS (Mixed Colors)  
• DRACENA PALM  
• FLAX • LANTANAS  
• PLUMBAGO  
• CYPERUS PAPHYRUS  
• PAMPAS GRASS  
1-Gal. Size

REG. \$6.50—FLOWERING  
TREE **\$3.50**  
**ROSES**

5-Gallon Can **MYROPORUM \$1.95**

**FREE With This Coupon**  
**FURCRAEA GIANTEA**

"MAURITIOUS-HEMP," succulent with long, wide, sword-like leaves and a great pale green rosette flower

Limit One to a Customer  
Offer Ends Sunday, September 17 T.P.

### TROPICAL SPECIALS

• FAN PALM  
• PHILODENDRON  
• DRACENA PALM  
• FLAX (Variegated Brown, Green, Red)  
• ARALIA  
• SCHEFFLERA  
• ELEPHANT EAR  
5-Gal. Size Your Choice **\$1.95**

## GREEN THUMB GARDENS NURSERY

Open 7 Days 20617 HAWTHORNE AVE., TORRANCE FR 1-1818  
All Prices Good Sept. 10 Through Sept. 17

# 'YOU and YOUR FUTURE'

Come....  
See....  
Hear....

THURSDAY, SEPTEMBER 14  
8:08 P.M.

## "How to Increase Your Income"

FRIDAY, SEPTEMBER 15... 8:08 P.M.

## "How to Use the Secret Powers of the Sub-Conscience Mind"

YOU WILL

1. See and Hear Impressive Memory Demonstration!
2. Develop and Test Your Own Memory!
3. Learn How to Lead a Happier and More Successful Life!
4. Learn to Be a Better Salesman!
5. Receive a Booklet "The Fabulous 15 Years Ahead!"

**YWCA**  
2320 CARSON STREET  
DOWNTOWN TORRANCE

SPONSORED BY  
**LEADERSHIP INVESTMENT**



Ralph L. Preston

Memory Expert, Sales Trainer, Lecturer and Human Relations Expert