

Palos Verdes Estates Gets \$9000 for Streets

Allocation of \$9,648 to the City of Palos Verdes Estates for maintenance and repair work on some of its major city streets, was announced this week by Supervisor Burton W. Chace.

This allocation is a portion of the \$5,300,000 currently budgeted by the Board of Supervisors to assist the 72 cities in the County of Los Angeles in the maintenance and construction of their streets which are of general County interest. This fund is replenished annually in proportion to the amount of Gas Tax the County receives and is apportioned among the cities according to population and Master Plan Mileage.

Supervisor Chace stated further that this \$5,300,000 and other allocations to cities represent more than 36 percent of the total County Highway Construction Budget.



A CONN ORGAN

Only \$104.80 Down / easy terms

Niki Music
Del Amo Annex
Across From Sears
3820 Sepulveda Blvd.
FR 5-2591

Fall Schedule For Torrance Plunge Reported

Torrance Recreation Department announced this week that the Victor Bendstead Plunge, at 3331 Torrance Blvd., will be open for recreational swimming, from 1 to 5 p.m. on Saturday and Sunday, September 9 and 10.

Plunge hours for Monday and Tuesday, September 11 and 12, are 1 to 5 p.m. and 7 to 9:30 p.m. Wednesday, Thursday and Friday, Sept. 13, 14, 15, the plunge will be open 7 to 9:30 p.m.

Weekend recreational swimming is scheduled to continue through October 15 from 1 to 5 p.m. Watch for announcements of additional hours if a heat wave occurs.

Use classified ads for quick results. Phone DA 5-1515.

Rolling Hills Storm Drain Now Completed

Windup of construction on the \$95,586.90 Rolling Hills Estates Storm Drain by the Wulff Construction Company of Long Beach was announced this week by Supervisor Burton W. Chace.

In a letter to the Board of Supervisors recommending acceptance of the construction, County Flood District Chief Engineer M. E. Salisbury reported that work was completed as of August 21. The Wulff firm was formally awarded the contract by the Supervisors on June 14, 1960. Two lines were built as a part of the project which will drain an area subjected to runoff from the north slopes of the Palos Verdes Hills. Construction included the installation of concrete pipe and necessary supporting fixtures.

The project was designed by the B. P. R. Engineering Company of Los Angeles for the City of Rolling Hills Estates. Flood Control District personnel directed construction and will operate and maintain the structure.

Funds to finance the storm drain were included in the 1958 storm drain bond issue which allocated \$225,000,000 for the construction of 184 key projects in various critical County locations, Chace added.

Sidewalk Project On Western Ave. Now Underway

County officials announced Tuesday that work on sidewalks along Western Avenue, from Avenida Ardena to Caddington Street and one block south of Caddington, San Pedro area, began Wednesday.

Report stated the County Road Department has assured nearby residents that the work will be completed by Sept. 18 and the sidewalks ready for use by the public.

The project was to have been completed by Sept. 11 but due to the fact that the block south of Caddington was added, it will be delayed until a week later.

Letters

SOCIALIZED MEDICINE
Editor, Press:

I have been very much surprised at the lack of comment on the King Bill that would provide medical benefits under Social Security.

I deplore the American Medical Association and most of their acts but I think they are absolutely right when they call this bill socialized medicine. This is the biggest step towards socialization that has ever been taken in this country. Some of the proponents of the bill have openly declared that this is only the start—that extension of this measure is only a matter of time.

This bill provides benefits for all, regardless of ability to pay, and why should the millions of people who can afford to pay for services have the government pay for it. When you bring up this question to Cecil King he dodges it.

I can say this, that anyone who sponsors a bill such as this loses my support at the polls and for good. If this one goes over you will pay and pay and pay.

Sincerely,
Donald J. Myers

CONSPIRACY
Dear Sir:
I am sure that many of our Torrance citizens were alerted to the true nature of the Communist conspiracy and its menace to all free peoples of the world by the Southern California School of Anti-Communism this last week.

This is a plea to all loyal Americans to continue in this fight so that some day all peoples of the world will be free and we can enjoy peace in the American way rather than a firing squad as the Communists would like. This is one job that we can't leave up to Washington to take care of for us. All Americans must

men interested in speech training or in overcoming make it a full time job to keep these master criminals called Communists out of The United States and all free countries throughout the world.

James H. Tuttle, Jr.

LUMBER GRADING

Lumber is graded according to its appearance and strength. Appearance grades are generally for interior finish or for exterior siding and trim. Strength grades are determined primarily on the stress factors they develop.

We Feature

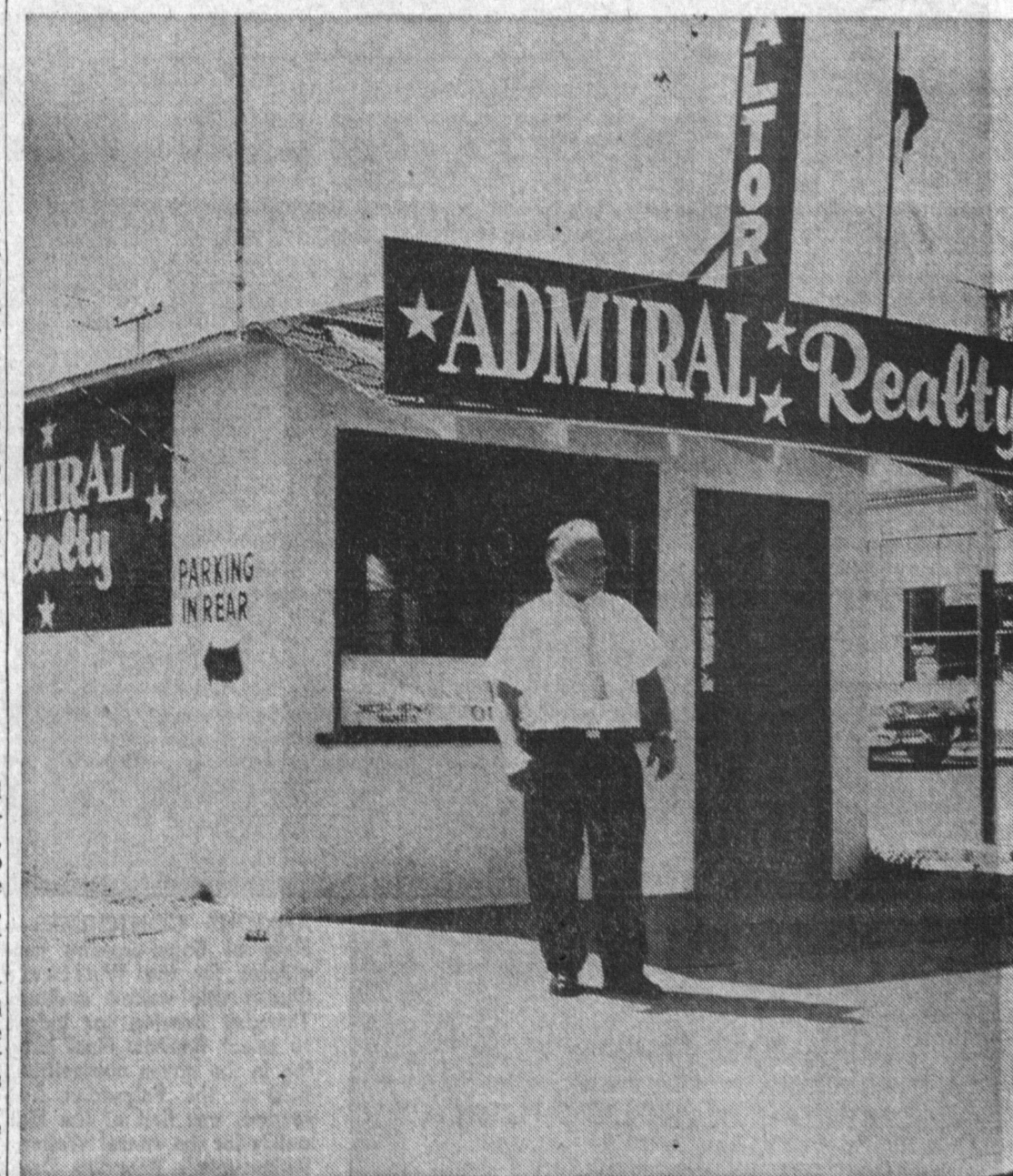
Glidden Brand Paints

- Assorted Colors . . .
- Finest Quality . . .
- Plus the new Push Button way of Painting . . .

TRY SOME TODAY

Punt's Paint Crib

IN THE FIGUEROA PLAZA
22844 S. FIGUEROA ST.
WILMINGTON
TE 5-9525



ADMIRAL REALTY—Henry Mahler, well-known realtor, last week opened the doors of his new Admiral Realty office at 1920 W. Carson St. Mahler is presently searching for top notch personnel to staff the new office. A director of the Torrance-Lomita Board of

Realtors, he has served in that capacity for three years. He is the only recipient of the Diamond Realty Pin, awarded for membership activities, in the 23-year history of the board.

Wednesday Toastmaster Meet Features Local Men

A panel discussion on "How To Be Successful In Business" highlighted the regular South Bay Toastmasters Club 280 meeting held Wednesday evening at the Elks Club, Redondo Beach.

Participants in the discussion were James Coyle, Hermosa Beach, W. Howard Smith, Torrance, Thomas Eadie, Hollywood Riviera, and Robert Norland, El Segundo.

Robert Norland, with his speech on "Know Your Boss," was awarded to James Coyle for his humorous speech on "Marry the President's Daughter."

The impromptu Table Topic speech program was presented by chairman Leonard Gaines and was won by Fred Strible, Manhattan Beach.

The next South Bay Toastmaster Club 280 meeting will feature educational speeches on the very practical subject of "How To Increase Your Salary."

Men interested in speech training or in overcoming make it a full time job to keep these master criminals called Communists out of The United States and all free countries throughout the world.

James H. Tuttle, Jr.

LUMBER GRADING

Lumber is graded according to its appearance and strength. Appearance grades are generally for interior finish or for exterior siding and trim. Strength grades are determined primarily on the stress factors they develop.

nervousness before an audience are invited to attend the regular meeting held each Club, Redondo Beach or on Wednesday, 6:45 p.m. Elks tating James McDonald, Frontier 2-9347.

Reservations For Ice Follies Tour Now Being Taken

Reservations for a bus trip to the Shipstads and Johnson Ice Follies on Thursday Sept. 21 are now being accepted at the Torrance Recreation Department.

The Theatre Bus will leave at 7 p.m. from the City Mall for the World Premiere of the 26th Annual Edition of the Ice Follies at the Pan Pacific Auditorium.

Cost of the trip which includes admission, bus fare and trip insurance is \$4.50 for Section B seats and \$3.50 for Section D.

Reservations may be made by calling the Recreation Department FA 8-5310; all reservations must be paid for by Monday, September 18. Early reservation is suggested because the trip is limited.

Retired Club Plans Outing

The Alumni Employees of Los Angeles County will hold its annual picnic at Sycamore Grove Park, 4700 North Figueroa, Los Angeles, Thursday, Sept. 14 from 10 a.m. to 4 p.m.

All retired Los Angeles County employees, their families, and friends are invited. They should bring their own picnic lunches and table settings, according to Mrs. Mamie Parker, president of the retired group.

At the picnic the oldest retiree, the youngest, and the one with the longest County service before retirement, and the retiree who came the longest distance to attend the picnic will be honored.

TORRANCE PRESS

and CARSON PRESS

W. R. Zapas, Publisher
Established April 15, 1949
Published Semi-Weekly, Thursday and Sunday. Entered as second class matter Oct. 8, 1957, at Post Office, Torrance, California, under act of March 3, 1879. Adjudicated a bona fide newspaper by Superior Court, Los Angeles County, California, Decree No. L. S. 33048, April 6, 1958.

Offices and Plant:
3228 W. Sepulveda Blvd., Torrance, California
Telephone: DA 5-1515

Mike Callis, General Manager and Advertising Director

William E. Edmonds, Managing Editor

Subscription Rates
(Payable in advance)

Local and Out-of-Town, per Year \$12.00

All manuscripts submitted at owner's risk. The Torrance Press can accept no responsibility for their return.

Realtor Searches For Top Personnel

A Torrance realtor this week opened an all-out search for top ranking personnel to staff his new office, opened Tuesday.

Henry Mahler, who served as membership chairman of the Torrance-Lomita Board of Realtors, opened his new Admiral Realty office at 1920 W. Carson last week after years of service in other realty offices in the community.

For his activities with the board in 1960 he received the Diamond Realtors Pin, only such pin given out by the local group since its beginning in 1938.

A member of the board of directors, he serves on the Ethics Committee, the Building Committee, and is chairman of the Personnel Committee.

Mahler makes his home with his wife, Rita, sons Henry Jr., Robert and Alexander, and daughter Darlene, at 1329 Engracia Ave.

FOR VARIETY

To add spice and variety to a wood deck, try flutting the ends. That is, let every other Douglas fir two-by-four deck board protrude three to four inches beyond its neighbor. The result is a sawtooth edge.

DANCING NIGHTLY IN FUN ROOM Mary Blue Trio

bowling at its BEST!

- COFFEE SHOPS
- COCKTAIL LOUNGES
- FREE BOWLING INSTRUCTIONS
- SUPERVISED NURSERY

BOWL-O-DROME

FA 8-3700—SP 5-1326

21915 S. Western (Near Normandie)

Torrance

BOWL WHERE YOU SEE THE

An Alex Schreiber and Family Enterprise

AMC

LANGLIS

THE FOLLOWING

FIRMS and SERVICES

ARE

OPEN SUNDAY

FOR YOUR CONVENIENCE

LOOK!

CLIP
AND
SAVE

CLIP
AND
SAVE

FOR WHAT YOU NEED FROM THIS HANDY LISTING

AMBULANCE SERVICE

MILLER-JACOBS

Ambulance Service
2012 W. Compton Blvd.
Gardena, Calif.

DA 4-1145 FA 1-1948

AUTO DEALERS

RIVIERA IMPORTED CARS

125 S. Sepulveda
Manhattan Beach
Volkswagen Dealer

SEACREST FORD

730 S. Pacific Coast Hwy.
Redondo Beach
Fords, Falcons, Thunderbirds
Trucks

CARLS' MOTOR CO., INC.

1200 N. Avalon, Wilmington
TE 5-3131 SP 5-1897
Crysler — Plymouth
Valiant — Imperial

ANTIQUES

OLD LAMP LIGHTER

2104 Pacific Coast Hwy.
Lomita
FR 3-1320

BARBER SHOP

GUS'S BARBER SHOP

1616 W. Carson Torrance
FA 0-3131
Sunday 9-3

BUILDING MATERIALS

South Bay Building Materials

2448 Sepulveda Torrance
Do-It-Yourself Center
Plaster, Cement, Stone
Brick — Rock — Etc.
DA 6-9541

CAR WASH

Torrance
5-Minute Car Wash
188 Torrance Blvd, Torrance
FA 0-2510

DAIRY

ARNOLD'S DAIRY

13126 S. Western Ave.
Gardena FA 1-5700

DANCING

Ileas
Ballroom Studio
21123 N. -bonne Lomita
Ev Appointment Only
Call DA 5-0160

FLORISTS

WINDSOR FLORISTS

Ave. C & Pacific Coast Hwy.
& Corner Crenshaw, Torrance

HARDWARE

LOVELADY HARDWARE

1967 W. Carson Torrance
FA 8-4274

KENNELS

BY GEORGE

327 E. Carson Torrance
TE 4-9360
Chihuahuas
Miniature Dachshunds

MARKETS

DEL RANCHO SUPERETTE

18220 S. WESTERN
TORRANCE
DA 3-2091

MARINE SUPPLIES

FLEETCRAFT MARINE CORP.

1449 W. Rosecrans
Gardena
DA 3-2626 FA 1-5670

PAINTS

BURKO

23831 Hawthorne Blvd.
Torrance
Lumber, Hardware, Paints
FR 8-1261

RESTAURANTS

Tai Song Cantonese

1405 N. Sepulveda
Manhattan Beach
Cocktails

SERVICE STATIONS

MARTIN'S SERVICE

1748 N. Avalon, Wilmington
TE 4-0818

TRAILERS

CHECKERBOARD RENTALS

3829 W. Pacific Coast Hwy.
Walteria
FR 5-9829

U-DRIVE

AVALON U-DRIVE

21625 S. Avalon Blvd.
TE 4-6657