

PRESS EDITORIAL PAGE

W. R. ZAPPAS, Publisher

W. E. EDMOND, Managing Editor

Ask Parents to Aid In Safety Program

With more than a million Los Angeles youngsters returning to school, the support and participation of parents in an area-wide back-to-school safety program is being requested by police and other safety agencies.

Responsibility of children in traffic must be shared by the parents and the official agencies, they said. Schools as well as law enforcement agencies are already participating in the program and parents are asked to help in two ways: showing children traffic safety by example, and establishing safe routes to and from school for the youngsters.

Agencies pointed out that most school children involved in traffic accidents are between 6 and 12.

FOLLOW EXAMPLE

"At that age," they said, "most children do things by following an adult example. Therefore, if parents demonstrate pedestrian safety habits, the children will follow."

The National Safety Council, one of the participating agencies, has suggested that one of the parents take the child over the most direct route to and from school several times, pointing out crosswalks, signalized intersections and such hazards as blind corners. The child should be convinced that the pre-established route is the only path he or she is allowed to use when traveling between home and school. After traveling the route two or three times with the youngsters, a time limit can

Majority of County Reliefers Are 'Unemployable'

Only 3.4 per cent of the 70,657 Californians receiving general relief in June were classified as "able-bodied or employable," according to a survey made by California Taxpayers' Association, S. J. Arnold, general manager announced this week.

In Los Angeles county 497 cases were disclosed by the study completed with the cooperation of the County welfare director.

Nationwide interest in welfare problems resulting from the dramatic Newburgh story led to the Cal-Tax survey which sought to determine how many able-bodied and

To expedite action on complaints of unfair trade practices, small businessmen can now file their applications through the field offices of the Small Business Administration located in 59 cities throughout the country, under an agreement announced jointly today by SBA Admini-

strator John E. Horne and Federal Trade Commission Chairman Paul Rand Dixon. The agreement is designed to make it more convenient for the small businessman to file his complaint and will speed the handling of applications. SBA field offices will forward the complaints directly to the FTS Headquarters in Washington, D. C. for appropriate action.

Today's announcement came as a result of a recommendation made by the recently established White House Committee on Small Business, chaired by SBA Administrator John E. Horne. The Committee was established by President Kennedy in May to review small business problems; to make recommendations for improvement; and to suggest new policies and programs of government assistance to small businesses.

Principal Federal and state trade regulation laws are outlined in the leaflet which also discusses some illegal practices under Federal laws, including price fixing, false and

discrimination and payment of brokerage to buyers. The FTC has made available to all SBA field offices a publication, "Rules of Practice, Procedures and Organization" which describes the Commission's areas of responsibility.

RECEIVE COMPLAINTS

Horne said that "as a service to small businesses all SBA field offices will receive complaint applications regarding suspected violations

ADMINISTRATION OFFERS UNFAIR TRADE ADVICE

Ryan Aircraft Lists \$68 Million In Sales During '61-'62 Fiscal Year

Net sales of \$67,848,487 and net income of \$2,176,159 were reported for the first three quarters of Ryan Aeronautical Company's 1961 fiscal year by T. Claude Ryan, president, in an unaudited interim statement released today.

The \$2,176,159 net income for the nine months ended July 31, 1961 was equal to \$1.32 per share on 1,655,631 shares, the average number outstanding during the period.

This compares with net income of \$1,772,647 and per share earnings of \$1.08 on 1,637,592 shares for the first nine months of fiscal 1960.

"Net sales were the second highest in the company's history for any corresponding period, being exceeded only by the first nine months of last year," Ryan said. "Profits were higher than for any deceptive advertising, price

corresponding period." Sales for the comparable period a year earlier totaled \$86,073,812.

The report disclosed the company's net income for the 1961 third quarter was approximately \$1 million. "Net income also exceeded \$1 million for 1960's fourth quarter ending October 31 last year due in part to year-end adjustments," Ryan said. "However, it does not necessarily follow that the final quarter of the current fiscal year will be comparable."

Ryan told stockholders that "although the company has an open line of unsecured bank credit totaling \$15 million, its financial position is such that the use of such credit is not currently required."

The company president also reported continued good progress on Ryan Aerospace projects, including further applications and development programs for Ryan Flex Wing vehicles and VSTOL (vertical and short take-off and landing) aircraft.

Auto Club Speak Up for 'Excellent' Calif. Drivers

Although a record number of California motorists were on the move during the July Fourth weekend this year, they proved what many persons choose to overlook; practically all of them drove well enough to try it again on the Labor Day weekend.

This word of encouragement came today from the Automobile Club of Southern California, which points out that only a minute fraction of motorists on holiday weekends are involved in fatal accidents.

"We don't intend to play down the dangers of careless driving," said Robert J. Cheney, Auto Club Public Safety department manager, "but we feel that accident statistics have been used to scare motorists, without any constructive help being offered."

DIMENSIONS

"The use of the automobile, and California's wonderful system of highways, has brought new recreational dimensions within the means of most Southland residents," Cheney pointed out. "Let's encourage people to take advantage of these facilities rather than trying to frighten them away."

According to this traffic safety authority, one of the best aids to motoring pleasure is the system of traffic advisory signs along our highways. These signs warn of cross roads, merging traffic, sharp curves, suggested speed reductions and other potentially hazardous situations.

Streamline Plan For Smaller Business Loans

A new program for expanded commercial bank participation with the Small Business Administration to encourage more private financing and to speed-up handling of loans to small business was announced this week by Small Business Administrator John E. Horne.

Horne said the new bank participation program, which establishes simplified and streamlined procedures to facilitate small business loans, will be put into effect immediately throughout the country. Through the simplified plan SBA hopes to expand quickly the volume of SBA-Bank participation term loans to small firms.

Under the new cooperative program a bank may participate with SBA in a loan to a small business with the Government providing up to \$350,000 in funds for any one loan. The participating bank must take at least a 25 per cent share in the loan. The interest charged SBA's share of the loan is 5½ per cent except in officially designated areas of substantial unemployment where it is 4 per cent.

The bank may set the interest rate on its share of the loan. In announcing the new loan program, Horne said "The Simplified Bank Loan Participation Plan has the immense advantage of permitting us to rely upon the bank's credit judgement which is based on its knowledge of its customers and its experience in the banking field."



Free Gifts For Savers From Glendale Federal Savings

An exciting array of indoor-outdoor gifts (pictured above) to add enjoyment and beauty to your home can be yours free from Glendale Federal.

Just open a savings account... transfer your account... add to your account... then select your summertime gift from our lobby display in one of four savings categories—\$250, \$500, \$1,000, \$1,500 or more.

Sorry, but only one gift to a customer... act now, for complete selection of gifts, as supplies are limited.

While you're enjoying the gift of your choice, your savings will be benefiting from our higher earnings of 4½%. Build a happy, secure future at Glendale Federal, where savings accounts are insured to \$10,000 by a permanent agency of the United States Government.

FREE PERMANENT FLOWER GIFTS FOR ALL...

just come in and say hello at any Glendale Federal Savings office and receive your free gift.



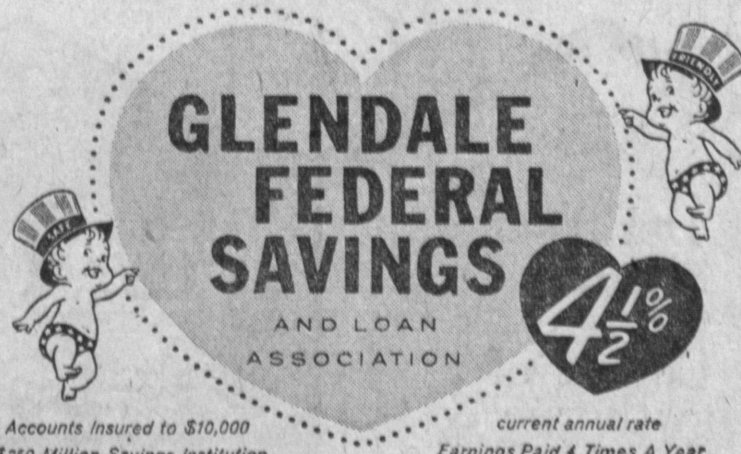
IF YOU PREFER GET DOUBLE BLUE CHIP STAMPS

525 Blue Chip stamps free when you open or add \$250-\$499 to a savings account.

1050 Blue Chip stamps free when you open or add \$500 or more to a savings account.

DEL AMO OFFICE

3832 Sepulveda Boulevard, FRONTIER 8-8351



Offices in ARCADIA, 100 South First Avenue • DEL AMO, 3832 Sepulveda Blvd. • EL MONTE, 112 West Valley Blvd. • FULLERTON, 320 North Harbor Blvd. • GLENDALE, 401 North Brand Blvd. • MONTEREY, 2350 Honolulu Avenue • PACIFIC PALISADES, 15215 Sunset Blvd. • SAN PEDRO, 566 West Ninth St. • STUDIO CITY, 12191 Ventura Blvd. • WESTWOOD VILLAGE, 1090 Westwood Blvd.