



BERNARD C. KEACH
... new regional manager

Firm Appoints Torrance Man Region Head

Bernard C. Keach has been appointed western regional manager, television products, for the Dage Division of Thompson Ramo Woolridge.

He will be in charge of the regional marketing of closed circuit television systems and components, working with distributors in California, Hawaii, Arizona and Nevada.

Keach joined his present firm in 1953 and prior to that was a research and development engineer at Hughes Aircraft Company.

Mr. and Mrs. Keach have three children and live at 5517 Riviera Way, Torrance, California.

Local PTA Backs Summer Program At Playground

Allen Orlin, director of the 223rd St. School summer playground, and his assistant Mrs. Thomas Brohamer, both members of the Los Angeles City School Youth's Service program, are pleased with the turnout at the playground this summer, they said.

There have been two successful beach trips to Cabrillo Beach in San Pedro. Another trip will be held August 23 to the same place. Persons wishing to go may see one of the directors or attend an assembly that is held each day at 1 p.m. in room 35 at the school. Mrs. Brohamer is in charge and urges all children to attend.

The old-fashioned picnic had 50 children attending. They went to the Gardena Recreation Park where games and contests were the highlights of the day.

A future date slated is the carnival that will be held August 24 at the school. Besides the carnival, a movie will be shown and a play will be put on by the children. The PTA will treat the children. Mothers and boys and girls interested in helping may report to Orlin or Mrs. Ralph Robertson, PTA president.

The softball team at the playground is second in the Harbor Area District; the girls' Volleyball team is in the finals, and the track team is in fifth place.

Activities take place every day from 12:30 to 5 p.m.

GRANDEUR

If you like the grandeur of a Southern Magnolia, but lack the garden space to accommodate its ultimate size, plant the more dwarf St. Mary's Magnolia. It resembles its larger counterpart in every way except that its blooms are even bigger—the size of a small dinner plate, at least. St. Mary's Magnolia has the quality of blooming earlier in life than the Southern Magnolia, which makes it an all-around better tree for smaller gardens.

MAGNIFY

The fair, when anyone praises or magnifies them, are filled with the spirit of pride and vainglory.

—Plato

LEGAL NOTICES

NOTICE OF INTENTION TO ENGAGE IN THE SALE OF ALCOHOLIC BEVERAGES

August 8, 1961

To Whom It May Concern: Subject to issuance of the license applied for, notice is hereby given that the undersigned proposes to sell alcoholic beverages at the premises, described as follows: 2117 Torrance Blvd., Torrance.

Pursuant to such intention, the undersigned is applying to the Department of Alcoholic Beverage Control for issuance by transfer of an alcoholic beverage license (or licenses) for these premises as follows: ON SALE GENERAL (PUBLIC PREMISES).

Anyone desiring to protest the issuance of such license may file a verified protest with the Department of Alcoholic Beverage Control at Sacramento, California, stating grounds for denial as provided by law. The premises are not licensed for the sale of alcoholic beverages. The form of verification may be obtained from any office of the Department.

FRANCIS J. McDONALD, JR., AND MARIAN A. PAGE, JR.

Torrance Press, Wed., Aug. 9, 1961

Grasses Appear In Many Sizes

There's a world of difference between lowly lawn grasses, giant timber Bamboos and huge clumps of white-plumed Pampas Grass. But all have one thing in common: They are members of the grass family.

Moreover, if you like the unusual, they all have a place in the garden. The giant timber Bamboo might be a bit outsize, but plenty of its little brothers will add a highly decorative appeal to the landscape.

Smallest of these little bro-

thers and most like grass in that you can mow it, is the ground covering Dwarf Bamboo. Many gardeners grow this one in pots, but an equal number use it to fill a bed. Loving moisture and rampant when it has it, Dwarf Bamboo is an appealing little thing to have around.

Golden Bamboo, a yellow-stemmed beauty, is the most used Bamboo in California gardens. It has that feathery, quality which landscapers love and makes an excellent screen or a fetching tub-

plant. This one comes highly recommended by the California Association of Nurserymen.

Some Bamboos are more tender to frost than others, the Black Bamboo being a typical example. The deep green leaves of this one contrast strikingly with the black coloring of the canes. Use it as you would Golden Bamboo and give it protection when you live away from the coastal influence. If you are intrigued by the tall-

the one to plant. Growing to 40 or 50 feet, it makes a bold background in one corner of the garden.

Unlike the bamboos, Pampas Grass cannot be recommended for small gardens, but in a background setting where space permits, it makes an accent plant of considerable merit. Clumps are eight feet high and at least as wide, sending up shaggy white plumes in late summer and fall. These can be cut and dried for decorative arrangements in the house. But

Vel-De-Nez Group To Meet Saturday

The Vel-De-Nez Songwriters' Club, a national (non-profit) organization with headquarters in Lomita, will hold its next meeting at the home of President Mrs. Inez Brom-below, Saturday, August 12.

The meeting will be held at 24208 Allene Ave., Lomita at 7:30 p.m. At this time,

arrangements will be made for the annual picnic to be held August 27.

A social hour and entertainment will follow the meeting. Henry Weaver Sr., publicity chairman, said. Local songwriters are invited, he said. Refreshments will be served and a door prize given away.

Use Press classified ads to buy, rent or sell. Phone DA 5-1515.

Council Sponsors Sale of Rummage

The Annual Rummage Sale of the Central Area of the St. James Council of Catholic Women will be held Friday and Saturday, August 11 and 12, from 9 a.m. to 5:30 p.m. in the St. James Parish Hall, corner of Vincent and Broadway, Redondo, announced Mmes. Norman Smith and Ray Asara, chairman and co-chairman, recently.

Use classified. Call DA 5-1515



FOOD GIANT

AT FOOD GIANT STORES ONLY



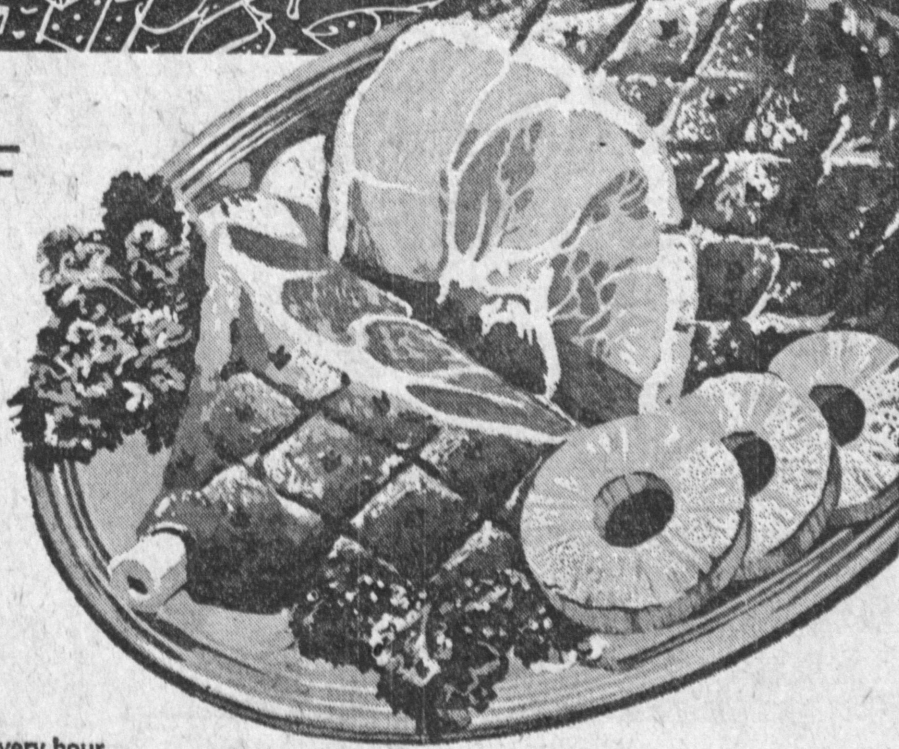
DYNAMIC LOW PRICES and more specials, too...!

Your savings are dynamic when you shop at Food Giant Markets. Our continuous everyday low price policy and our tremendous weekend specials guarantee your family the very best — the greatest savings at lowest prices.

KRAFT'S
MIRACLE WHIP
39¢
FULL QUART

FARMER JOHN'S
EASTERN QUALITY, WESTERN FLAVOR
FULL SHANK HALF HAM

39¢
lb.



Darigold Brand. 1st quality butter. Creamery-fresh. Pound
BUTTER 69¢

CHUNK STYLE
STARKIST TUNA
Light meat No. 1/2 can
19¢

Precision ground, fresh every hour
GROUND BEEF 3 pounds \$1
California grown, flash frozen
ROASTING CHICKENS 39¢ lb.

Canadian style, melts in your mouth
Boneless Pork Loins 69¢ lb. Boneless Pork Chops 79¢.

SUGAR 5 lb. bag 49¢
C and H Pure Cane

COFFEE 59¢
Folgers, Maxwell House, Chase & Sanborn, Butternut, M J B 1 lb. can

BREAD 19¢
Golden Ranch, White or Wheat, Reg. Size Loaf

Flav R Pac. Pink or plain frozen lemonade — a hot weather treat.
LEMONADE 3 6 ounce cans 25¢

County Fair. Assorted flavors of your favorite frozen pie. 8 inch.
FRUIT PIES 35¢

F & P. Makes good food taste even better. Large 14 ounce bottle.
CATSUP 15¢

NEW! FOOD GIANT
LOW SUDS GIANT SIZE DETERGENT 69¢
For ALL automatic washers

PRESTO INTENSE HEAT
BRIQUETTES 10 LB. BAG 59¢

MA PERKINS
PORK & BEANS 3 tall #300 cans 25¢

Rath's, Beef, Veal, Pork 8 oz. package
CHOPPETTES 39¢

FAY ELBERTA FREESTONE
PEACHES 2 lbs. 25¢
Sweet Thompson Seedless
GRAPES 2 lb. 25¢
Sweet Tender Northern
CARROTS 2 Bunches 15¢

C & H. Pure Cane. Your choice—light brown, dark brown. One pound box
POWDERED SUGAR 2 lbs. 29¢
Contadina brand. Hand peeled, California. Large #2 1/2 can
PEELED TOMATOES 21¢
A safe gentle liquid detergent. Price includes 8¢ off. 22 ounces.
CHIFFON LIQUID 57¢
Shady Oaks—The Perfect Sauce for all Broiled Meats. 6-oz. cans
STEAK SAUCE 3 for 25¢

FINLEY'S "ORIGINAL FORMULA"
LONDON DRY
GIN HALF GALLON \$2.98 FULL FIFTH \$7.19
TREAT TO EAT—NEW SENSATION
JOHNSON'S
CORN DOGS 2 IN PKG. 29¢

4 GIANT SALE DAYS
THURSDAY THRU SUNDAY
AUGUST 10-13

FOOD GIANT

McDANIEL'S



LIMIT RIGHTS RESERVED

In SAN PEDRO
28849 Western Ave.
In NO. TORRANCE
4848 W. 190th St. at Anza

In GARDENA
14990 Crenshaw Blvd.
In HAWTHORNE
423 So. Hawthorne Blvd.

In MANHATTAN BEACH
2400 Sepulveda Blvd. at Main
In TORRANCE
3731 Pacific Coast Hwy.