

# HOLIDAY CONTINUES

are our gift to you! Now, in every department, extra bargains. That's our way of saying one year old!

July 20, 21, 22, 23

**Money**  
RANCH, White or Wheat  
**READ** Reg. 19¢  
Loaf

**YELLOW CLING**  
Sliced or HALVES  
**UNT'S**  
**ACHES**  
19¢

**FROZEN**  
**ORANGE**  
**JUICE**  
FLAV-R-PAC  
6-OUNCE CAN 15¢

**PEAS** In The Tall 303 Can 19¢  
**APPLE** No 1 1/4 Can 19¢  
**CE** In A 12-oz. Jar 39¢

**Hot Weather Drink**  
**opical Treat**  
**AIAN PUNCH**  
46-oz. Cans \$1

**P. Quality 12-oz. Jar**  
**t Relish** 4/\$1  
**or**  
**Q Relish**

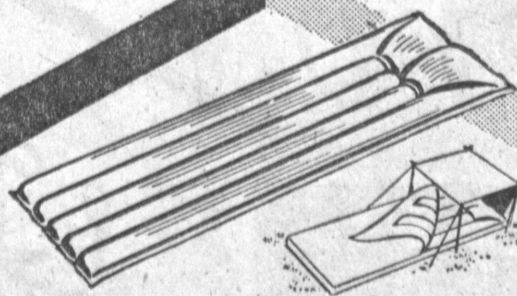
**SWEET**  
**RINES**  
10¢  
**PE, SLICING**  
**ATOES**  
10¢  
**SIZE, SALAD PERFECT**  
**RS** 5¢ lb.



## RECORD SALE

Midsummer Stereo Hi-Fi Sale. Summer's the time to dance! And you can stock up on popular Percussion and lively "Cha-Cha-Cha" rhythms. Buy two records a week for the next four weeks. 7" Unbreakable.

REG. \$1.49 **33¢** With Any 1.00 Purchase

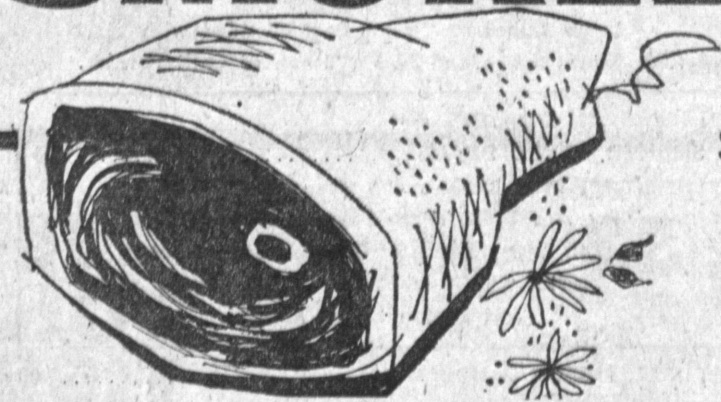


## Vinyl Mattress

Perfect for playing in the pool, or as mattress for overnight camping trip... or just lying in the sun on the beach. Voit's vinyl rubber in Blue, Green, Bronze or Silver. Fully guaranteed. Big 28"x72" size.

REG. \$2.98 **\$1.77** With Pillow

## RATH'S BLACKHAWK BRAND SMOKED PICNICS



HICKORY &  
SUGAR CURED

5 TO 7-LB.  
AVERAGE

**29¢** lb

USDA "CHOICE" STEER BEEF, NONE PRICED HIGHER, E.V.T.

**7-BONE ROAST** 39¢ lb

\* MAGIC CHEF'S FINEST FLAVOR, PRECISION GROUND

**GROUND BEEF** ONE POUND 35¢ **3 lbs.** 1  
**GROUND CHUCK** 49¢ lb.

USDA GOV'T INSPECTED, CRYOVAC, FLASH FROZEN, 4 TO 5-LB. AVG.

**ROASTING CHICKENS** 39¢ lb

SWIFT'S "PREMIUM" 1-LB. PACKAGE  
**SLICED BACON** 59¢

RATH'S COTTAGE STYLE, EXTRA LEAN.  
**SMOKED DAINTRIES** 79¢ lb

FRESH, DEEP WATER, DELICIOUS  
**SALMON STEAKS** 89¢ lb

LANGOSTINO FOR SALADS 6-OZ. PKG.  
**LOBSTER TAILS** 49¢

**MAGIC CHEF GOURMET GALLEY**  
**RUBIN'S ZESTY SALAMI**  
REG. 89¢ lb. **59¢** lb.  
**ALL BEEF, TANGY BOLOGNA** REG. 79¢ lb. **39¢** lb.

**MAGIC CHEF CINNAMON BAKERY**  
**CINNAMON ROLLS**  
OLD-FASHIONED FLAVOR LOADED WITH CINNAMON  
Reg. 36¢ Doz. — 6/Pack **25¢** doz.  
**CHERRY-COCONUT CAKE** 89¢  
REGULARLY 98¢

Del Amo Shopping Center  
Corner of Hawthorne & Sepulveda

**MAGIC CHEF**



Limit Rights Reserved

THE PRESS

Wednesday, July 19, 1961



JOHN R. BARTHOLOMEW  
... chief engineer for Estey

## 2 Teenagers Attend Camp In Mountains

Two Torrance teenagers are among 114 youths of the Crippled Children's Society who departed Monday, July 17, for a two-week session at the society's two resident camps, Joan Mier at the seashore and Paivika in the mountains.

Local teenagers attending are Louis Beauford, 22709 Fern Ave., and Josephine Sturges, 5506 Green Meadows St., both 17, who is vacationing at Camp Paivika.

Handicapped young people of 16 to 19 years will make up the camping session of Camp Paivika at Crestline. The first camp in the United States designed and built specially for the handicapped, Paivika accommodates more than 100 persons and enough counselors to provide the ratio of one counselor for every four campers which the society maintains at both camps to assure full care for those with serious handicaps.

During the summer, five two-week sessions are provided at each camp as an Easter Seal Service. No fees are charged, and campers are eligible whatever the nature of the handicap and whatever their heritage or creed.

## Dept. Sponsors Trip to Laguna

Reservations for the Torrance Recreation Department's theatre bus trip to the Laguna Festival of the Arts "Pageant of the Masters" on Sunday, July 23 are now being made.

A bus will leave the Torrance City Hall at 5 p.m. returning about midnight. The \$4.50 charge includes the bus transportation, ticket in the center section, and trip insurance. Reservations may be made at FA 8-5310.

The two-hour pageant will feature 24 famed paintings portrayed in living pictures, with models recreating the art works. The pageant, now in its 26th year, is produced

## Estey Appoints Chief Engineer

John R. Bartholomew, who was responsible for the custom installation of organs and allied sound equipment at Disneyland, has been appointed chief engineer of Estey Electronics, Inc., it was announced here today by Stanley Green, president.

In addition to designing special organ and sound equipment for the fabulous California amusement park, Bartholomew is also well known in the organ industry for his installation of a concert model organ and 22 tone cabinets in the Los Angeles Coliseum.

He designed the carillon installations in Los Angeles City Hall, and organ installations for the University of Southern California, the Shrine Auditorium in Los Angeles and many churches in Southern California.

A World War II Air Force pilot, Bartholomew was a design engineer for North American Aviation Corp. before entering the organ field. He joined Estey's engineering staff in 1956.

## PTA Directs Recreation

223rd Street School playground activities are under way, with a boys' tract team and a girls' tract team being organized.

Roller skating was participated in recently by a great many children. Recently a play titled "Secret Liding Place" was presented.

A boys' softball team and a girls' volleyball team are being organized. PTA members plan to treat the children attending this playground to snowcones three times this summer.

Use classified ads for quick results. Phone DA 5-1515.

on the stage of the Irvine Bowl. The "Last Supper" by Leonardo da Vinci climaxes the show.

An exhibit of art work is displayed on the grounds of the festival.



IT'S A RECORD!—The Southwest Obedience Club will again play host to one of the largest licensed obedience trials in the United States. Three hundred sixty-eight dogs are entered in the July 22 event to run from 6 p.m. to 12 midnight at the Rosecrans Playground, 149th and Vermont, Gardena.