

'Dangerous' Habit Dismays Adults

'Sniffing' Youngsters Becoming a Menace

Several Torrance youngsters were treated last week by their family physicians following an outbreak of what is becoming a common, and dangerous, habit. Local merchants are becoming alarmed at the number of youths arrested for stealing certain materials from shops.

Teenagers throughout the country have discovered that they can achieve a slight stage of inebriation by "sniffing" materials that contain quantities of certain volatile liquids.

Some of the more dangerous fluids that can be used for this purpose are gasoline, cleaning fluids containing benzene, and a common possession of most youths, model airplane cement, containing acetone.

ON LOOKOUT

Police officers and physicians are on the lookout for youngsters addicted to inhaling the very dangerous fluids. Parents have been warned that they should be wary of leaving the common household liquids around where youngsters can get at them.

Yet, still the cases are brought to the doctors... many times too late for treatment.

When inhaled, the vapors of the volatile stuff is transmitted from the lungs into the bloodstream in much the same way that alcohol is carried to all parts of the body.

The only difference is... this material is intensely toxic and will cause brain damage and injuries to the body.

It can cause death and permanent injury to the mental facilities. It can permanently impair a youngster's physical and moral development.

It is the responsibility of every adult, whether in the home or school, to see that these materials are kept out of the hands of youngsters.

Note Increase in Defense Industry's Employment

Employment in two defense-related industries in California increased by nearly 20,000 in the past 12 months, and this combined gain outweighed a decline of about 14,000 in aircraft, John F. Henning, California Director of Industrial Relations, reported this week.

Employment in missiles plants of 69,700 wage and salary workers this June was an all-time high and above last June's count by 9,900. The number employed in electrical equipment (including electronics) was at a near-record total of 175,300, which exceeded the year-earlier count by 9,400.

DEFENSE JOBS

On the other hand, the aircraft workforce was down by 13,900 from a year ago. The June count of 191,700 workers in this industry was a 10-year low.

LEGAL NOTICE

CERTIFICATE OF DISCONTINUANCE OF USE AND/OR ABANDONMENT OF FICTITIOUS NAME
THE UNDERSIGNED does hereby certify that, effective June 1, 1961, he ceased to do business under the fictitious firm name of MIDDLETON READY MIXED CONCRETE at 22206 S. Vermont, Torrance, California, which business was formerly composed of the following person, whose name in full and place of residence is as follows, to-wit: John L. Middleton, 2645 W. 182nd Street, Torrance, Calif.
Certificate for transaction of business under the above fictitious name, and affidavit of publication thereof, are on file in the office of the County Clerk of Los Angeles County, under the provisions of Section 2466 of the Civil Code.
WITNESS my hand this 20th day of June, 1961.
JOHN L. MIDDLETON
Torrance Press, Wednesday, July 12, 19, 26, August 2, 1961.

GOVERNMENT SURPLUS SALES

NOW anyone can buy DIRECT from U.S. GOVERNMENT SURPLUS DEPOSITS, by mail for yourself or for resale. Cameras, binoculars, cars, leeks, trucks, boats, hardware, office machines and equipment, tents, tools and less-of-thousands of other items at a fraction of their original cost. Many items brand new. For list of hundreds of U.S. Government Surplus Deposits, located in every state and overseas with pamphlet "How Government Can Ship Direct To You," plus procedures, HOW TO BUY and how to get FREE SURPLUS, mail \$2.00 to SURPLUS SALES INFORMATION SERVICES, P.O. Box No. 1818, Washington 5, D.C.

PRESS EDITORIAL PAGE

W. R. ZAPPAS, Publisher

W. E. EDMOND, Managing Editor

Harvey Aluminum Offers Million Share Stock Sale

A public offering of 1,000,000 shares of A Common Stock of Harvey Aluminum (Incorporated), Torrance, California, one of six producers of primary aluminum in the United States, is being made this week by an underwriting group headed by Kuhn, Loeb & Co. Incorporated and Tucker, Anthony & R. L. Day. The stock is being offered at \$29.25 per share. Application will be made by the company for the listing of the A Common Stock on the New York Stock Exchange.

Lawrence A. Harvey, chairman of the board of directors of Harvey Aluminum, said proceeds of the new issue will be used to assist the company in its program to develop into a fully integrated producer of aluminum and aluminum mill products.

TWO PLANTS

Harvey Aluminum, which was incorporated in 1942, has, in addition to its fabricating facilities at Torrance, an aluminum reduction plant at The Dalles, Oregon, which has an annual capacity of 75,000 tons of primary aluminum. The company recently completed negotiations with the U.S. Government for acquisition of an aluminum wrought products plant in Adrian, Michigan, which when in full operation will have an annual capacity of 25,000 tons. Harvey's Torrance plant now fabricates 30,000 tons annually.

The company's net sales for the six-month period ended March 31, 1961 were \$41,860,000 as compared with \$28,828,000 reported for the same period last year. The increase in net profit was 35 per cent. Harvey Aluminum became

Supervisor Asks For 'Regulation' Of Skindiving

Supervisor Burton W. Chace this week called for "strict regulations" on skindiving on Los Angeles County beaches.

Chace told the Board of Supervisors that the matter of controlling skindiving "for the protection of the skindivers themselves" should be studied by the Department of Parks and Recreation, the Chief Administrative Officer and the County Counsel.

"I would urge that this study be undertaken at once and a report made next Tuesday," Chace said. "We are in the midst of Summer and skindiving seems to be increasing in popularity among the young people."

Chace's recommendation for stricter regulations came upon the heels of two tragedies in the Malibu area over the week end.

Nicholas C. Williams, 18, 1602 1/2 N. Alexandria Street, Los Angeles, drowned Saturday while skindiving at a beach near the Malibu pier.

Torrance Plant Begins Production For Dow Chemical

Production of polypropylene, at The Dow Chemical Company's plant at Torrance, Calif., has started on a "highly successful basis," Leland A. Doan, general manager of Dow's Western Division, has announced.

Doan added that the plant is expected to be in operation on a full-scale basis within the next 60 days.

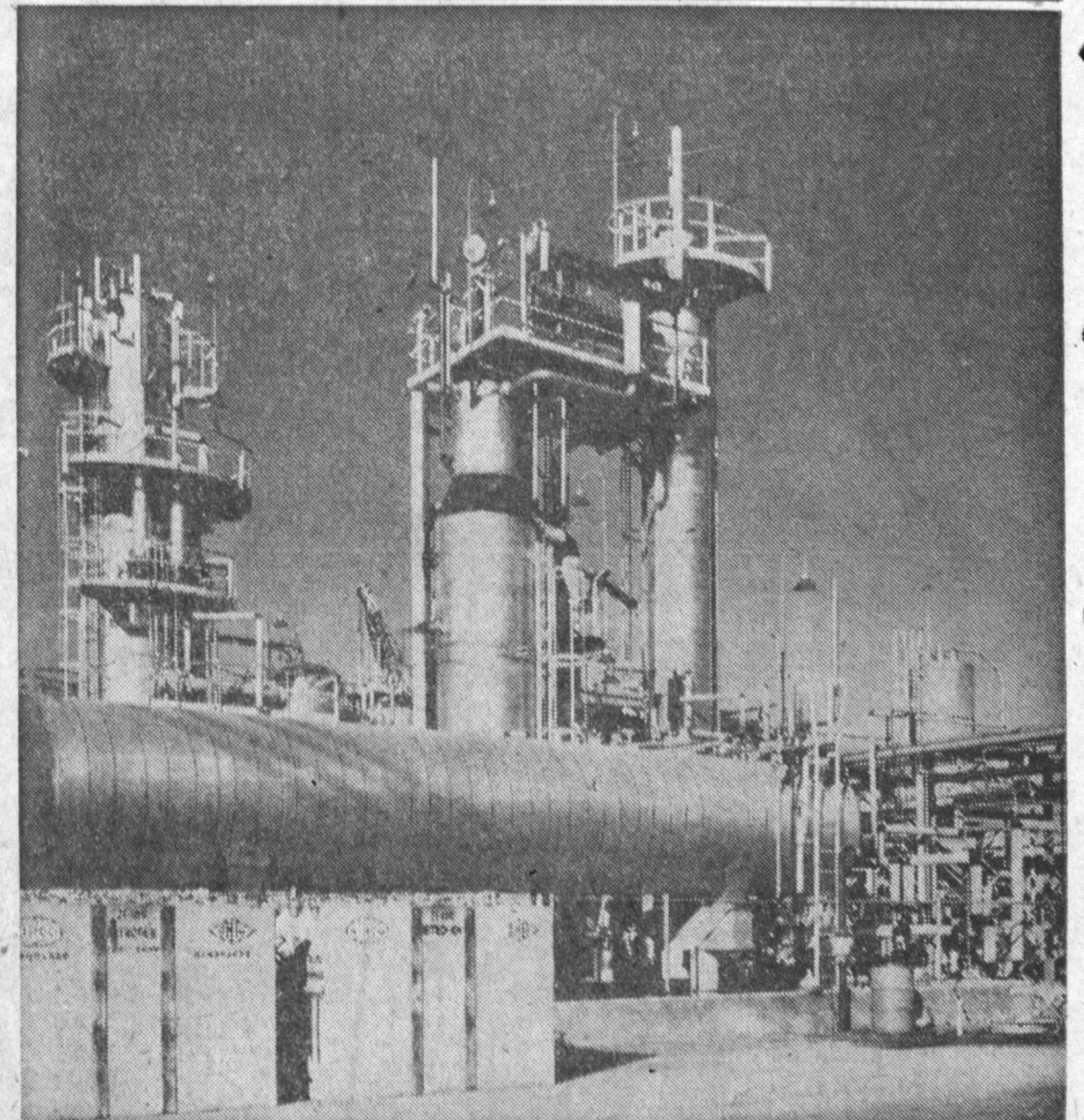
He explained that Dow Plastics Technical Service personnel are currently conducting tests on material produced at the new facility, and that material is available for additional sampling.

The molding materials field appears to be the likeliest initial area for material produced at the polypropylene plant, Doan noted, partly because of Dow's position as a major molding materials supplier.

ADDITION

W. C. Goggin, manager of Dow's Plastics Department, said that the new production facilities represent an important addition to Dow's family of polyolefin plastics, a field in which Dow has traditionally maintained a broad base.

The Torrance facilities — first of their type for the western United States —



PRODUCING—Production of polypropylene at the Dow Chemical Company's plant at Torrance has started. The plant is expected to be on a full-scale basis within the next 60

days, according to Leland A. Doan, general manager of Dow's Western Division. The Torrance facilities are the first of their type for the western United States.

were built at a cost of several million dollars.

Torrance has been the main location of Dow's Western plastics production since 1953. Styron (Dow polystyrene) and Styrofoam (Dow

rigid plastic foam) are among the other products in production here.

An expansion of Dow's Plastics Technical Service facilities at Torrance was completed in December. The ad-

ditional facilities make it possible to study and develop various techniques of using polypropylene-based plastics for molding, coating, film and foam applications.

School Districts Spend \$1 1/2 Billion Each Year

California's 1,734 school districts spent \$1,474,881,000 in 1959-60 to operate schools for an average daily attendance of 3,353,233 pupils.

State Controller Alan Cranston said the total general fund expenditures of the districts represent a 12.8 per cent increase over the preceding fiscal year. The figures, plus a multitude of others, are contained in the recently issued controller's annual report on

school district financial transactions.

Cranston said general fund income for the districts amounted to \$1,484,681,000, an increase of 11.1 per cent over 1958-59.

District taxes accounted for 53.4 per cent of the income, apportionment of state funds for 41.8 per cent, federal subventions 2.3 per cent and other sources 2.5 per cent.

MODERN GAS for even, controllable cooking

ADEQUATE WIRING for brighter, clearer television

balanced power homes
give you the best of modern gas and electricity...
for easiest living at lower cost!

Make sure the new home you choose is equipped with **BALANCED POWER**—the most logical, common-sense approach to modern home design. **BALANCED POWER** means that each household job is done by the power that does it best. Modern gas handles such jobs as cooking, air conditioning and heating, clothes drying, refrigeration, and water heating. Adequate wiring with plenty of outlets is provided for lighting, dishwashers, disposers, plus all the

plug-in appliances you want. Don't you agree that **BALANCED POWER** is the most logical, common-sense approach to modern home design? Gas on all those jobs best done by gas—and adequate wiring for all your electrical needs. Keep in mind this new standard of excellence as you look for your new home. Look for the big blue **BALANCED POWER** sign prominently displayed by leading builders throughout Southern California.

SOUTHERN CALIFORNIA GAS COMPANY



Relax—with a phone by your side

A phone in the *right* place adds the final touch of comfort and convenience to outdoor living.

With an extension phone on the patio, there's no need to run indoors to *take* a call—no need to move to *make* a call.

A phone within reach makes sense—at little expense. And you have a choice of many decorator colors to match or blend with your summer furniture. Drop by our Business Office and see these beauties for yourself. Or order yours by phone today.

GENERAL TELEPHONE

America's Largest Independent Telephone System

