

PENINSULA HOMES—Shown is one of varied stylings at Country Club Unit of Grandview Palos Verdes, where trade-up program has spurred rapid sales pace. Company will soon

offer new development on peninsula, to be priced from \$24,500.

Grandview Builders Open New Area

A new Palos Verdes community, featuring all new plans and a new low price, has been announced by the Grandview Building Co., developers of Grandview Palos Verdes and West Palos Verdes, luxury peninsula homes.

With full details still to come, director of sales Bill Kulow announced this week that the development, to be known as Grandview Rolling Hills, will be priced from \$24,500. It will be located in the peninsula's north-central area, off Silver Spur Road adjacent to completed and occupied components of Grandview Palos Verdes, where nearly 1,600 families have purchased homes.

A new high school, the peninsula's second, will be built within walking distance of the forthcoming new development, the Palos Verdes Unified School District has revealed.

WITHIN MEANS

"These homes," Kulow said, "will dramatically place within the means of many families Grandview-built homes in the smog-free, prestige Palos Verdes Peninsula."

In another announcement, Kulow revealed that sales at West Palos Verdes Estates and Grandview's Country Club unit last weekend amounted to \$250,000. He attributed the late June spurt to the ending of the school term and the desire of families contemplating a move to get settled during the summer.

LEGAL NOTICE

NOTICE OF INTENTION TO ENGAGE IN THE SALE OF ALCOHOLIC BEVERAGES

June 30, 1961
To Whom It May Concern: Subject to issuance of the license applied for, notice is hereby given that the undersigned proposes to sell alcoholic beverages at these premises, described as follows:
2848 Sepulveda Blvd., Torrance
Pursuant to such intention, the undersigned is applying to the Department of Alcoholic Beverage Control for issuance of an original application of an alcoholic beverage license (or licenses) for these premises as follows:
ON SALE BEER
Anyone desiring to protest the issuance of such license (s) may file a verified protest with the Department of Alcoholic Beverage Control at Sacramento, California, stating grounds for denial as provided by law. The premises are now licensed for the sale of alcoholic beverages. The form of verification may be obtained from any office of the Department.
CHARLES F. KERRHART and
ERNEST W. SMITH, JR.
Torrance Press, Sunday, July 9, 1961

mer in time for the fall term.

COUNTRY CLUB

Country Club Unit start at \$28,335 for spacious three bedroom and family room, two bath models. Seven furnished model homes may be reached via Crenshaw Boulevard to Silver Spur and turn right.

West PV, located near the ocean - view intersection of Hawthorne Boulevard and Palos Verdes Drive West, is now priced from \$36,300 with the sale of some of the lower priced plans.

Split level stylings and the award-winning Deauville with 2,129 square feet of inside space, are among homes available in both locations. Trades are actively considered.

Torrance Youth Enters Hospital

James Lyles, 7, son of Mr. and Mrs. Robert Lyles of 3310 Linda Vista, Torrance, has been admitted as a patient at Los Angeles Orthopaedic Hospital, it was announced today.

Torrance is one of the many Southland communities which sends its handicapped children to Orthopaedic Hospital to become straight and strong.

While the hospital serves private patients, no disabled boy or girl through the age of 21 who can benefit from orthopaedic care, is refused admission regardless of race, creed, place of residence or ability to pay. Since 1920, more than 75,000 crippled children have been cared for at Orthopaedic Hospital.

Although operational funds are provided Orthopaedic Hospital through such sources as Los Angeles Area Community Chest, its capital funds for expansion and new building must be raised through public appeal, officials pointed out.

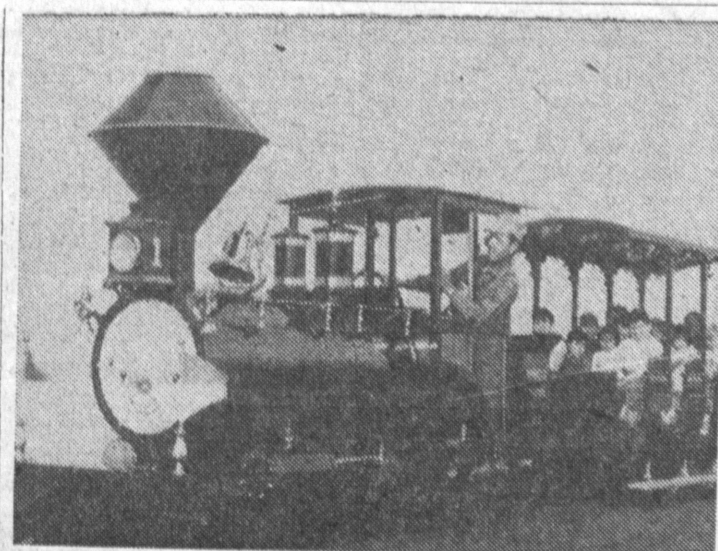
Residents of communities where children receive help were urged to support the institution's current fund drive for a new \$6,500,000 children's center, where care of the Southland's growing numbers of crippled children can be continued.

Oriental Exhibit Features Design

An exhibition of the best of contemporary Japanese design in the fields of textiles, ceramics, woodware, metalwork, china and glassware, as well as ceremonial objects and toys, opened Saturday, July 1 at the California Museum of Science and Industry in Exposition Park. It will continue through July 30.

Entitled "Japan: Design Today," the exhibit features some 300 objects, largely handmade by artisans, which are common objects of everyday living in the traditional Japanese culture. They include bamboo tea ceremony utensils, lacquered bowls and plates, glass tumblers, crystal tableware, hand-carved wooden combs, dolls and other folk toys.

The Museum is open daily from 10 a.m. to 5 p.m. There is no admission charge.



KIDDIE TRAIN RIDES—As part of the opening ceremonies for the Del Amo office of Glendale Federal Savings and Loan Association, free kiddie rides were given including a train ride (pictured above), rocket ships, ferris wheel and six live ponies. The rides were in operation Friday and Saturday.

Church Presents Billy Graham Film

Evangelist Billy Graham's newest feature motion picture, "Shadow of the Boomerang," an action Western filmed in the wide open spaces of Australia's "Outback," will be shown at the First Baptist Church of Torrance, 2118 Carson St., Sunday and Monday evenings, July 9 and 10, at 7:30 p.m., said the Rev. Morgan Gates, pastor.

The current release, which stars American performers Georgia Lee and Dick Jones, heading an all-Australian supporting cast, was filmed during the Graham team's Australia Crusades when some of the largest crowds in Graham's entire ministry gathered to hear him speak in Melbourne and Sydney.

Attractive actress - singer Miss Lee is remembered for her starring role in "The Heart Is a Rebel," filmed during the Billy Graham Crusade at Madison Square Garden. Co-star Jones will be recognized as television's Buffalo Bill Jr. as well as Dick West in the Range Rider.

A young aboriginal, Jimmy Little, who had no prior acting experience, was cast by producer-director Dick Ross. "Shadow of the Boomerang" is free. The public is invited. Nursery will be open.

Great Western Sets Record

Great Western Savings and Loan Association has concluded the largest half-year growth period in its 36-year history, according to Bill Thrasher, assistant secretary and manager of Great Western's South Bay office.

Thrasher released this information, which was contained in a memorandum received from Emil Seliga, executive vice president of Great Western. The memorandum congratulated the South Bay office for its contribution to the remarkable, accelerated growth of the Association.

Seliga's memorandum also stated that the Association's current six-months report, ending June 30, 1961, reveals that assets, savings, loans, interest paid to savers and total reserves are all at record highs.

ASSETS

Assets, which have increased at an average of \$50 million a year since 1955, had a most significant growth during the first six months of 1961, increasing from more than \$358 million on January 1 to over \$411 million as of June 30.

Savings balances grew to exceed \$318 million, an increase of more than \$27 million since January. This, plus normal loan repayments, made it possible for the Association to lend a record of more than \$80 million to 5,140 carefully screened borrowers.

EARNINGS

More than 100,000 savers earned nearly \$7 million in quarterly interest payments during this time. Great Western will continue to reward its savers by paying 4½% interest through the third quarter of 1961, Seliga's memorandum said.

Great Western has seven offices in southern California. The South Bay office is located at 16818 Hawthorne Boulevard, Lawndale.

If You Wear Glasses Check These Contact Lens Advantages!



New plastic contact lenses offer you clear vision without anyone knowing your sight needs correction. No larger in diameter than an eraser tip. They are easy to apply and are designed to be worn comfortably all your working hours.

"CONTACTS" ARE IDEAL FOR SPORTS. Can't break; never steam up. They do not interfere with coiffure arrangement or "make-up" application, and they offer wonderful relief to wearers of heavy, thick-lensed glasses. Not expensive; terms to suit. 32-years in Harbor Area.

A demonstration or factual illustrated literature on the new Plastic Contact Lenses may change your file. No obligation for either. Come in or write TODAY!

DR. J. M. SOSS, Optometrist
1268 Sartori FA 8-6602
810 AVALON, WILMINGTON
OPEN FRIDAY EVENINGS AND ALL DAY SATURDAY



CITIZENS RUN FOR FREE FLAGS—More than 5000 flags were given out by Marina Federal Savings and Loan Association in response to an announcement of free distribution to adult citizens. Local Sea Explorers and Mariners handed them out from the foyers of the two offices of this savings and loan

association—in Torrance and Westchester. The "Fly the Flag" program was conceived by Russell Chase, president of Marina Federal Savings and Loan Association, and is playing an important role for revitalized interest in flag display by citizens on our American holidays.

Inside Your Home

Your Decorating Problems Answered
By BEN L. WALLACE, N.S.I.D.

Mr. Wallace

Is it proper to use wallpaper in more than one or two rooms in the house or should it be restricted to the living room and dining room? I was told the latter by a decorator. May I have your opinion on this please?

Mrs. Grace B., Torrance
Mrs. Grace B., Torrance

You may certainly use wallpaper in any or all of the rooms of a home. Wallpaper is probably the least restrictive item used, other

than paint, to beautify the home. I question the fact that the decorator who told you this was really wide awake that day.

Mr. Wallace
We have a combination living room and dining room that we are going to carpet. Can you tell me what would happen to our decor if we did not put carpet in the dining area. We use this area three times a day for eating and it is just not practical in my opinion. If I did not carpet this area what could I use here.

Mrs. James Corden, Lomita
Mrs. James Corden
These areas are problems, but in this case I suggest



NEW CAR DIRECTORY

G.M.C. TRUCKS
OLDSMOBILE - CADILLAC

CECIL L. THOMAS & SONS
PACIFIC COAST HIGHWAY AT VERMONT—HARBOR CITY

STUDEBAKER ORegon 8-4005

Dealer Authorized by Studebaker Corporation to Service the Torrance Area

FRANK H. AFTON CO.
240 N. MARKET, INGLEWOOD

DENTAL PLATES

REPAIRED AND RELINED WHILE-U-WAIT

GAS OR PENTATHOL
FOR EXTRACTIONS AT THE SAME PRICE

18 MONTHS TO PAY
FIRST PAYMENT SEPT. 1, 1961

COMPLETE DENTAL SERVICE
• X-ray • Partials • Fillings • Pyorrhea Treatment
OPEN EVENINGS AND SATURDAY—NO APPOINTMENT NECESSARY

DIFFICULT CASES WELCOMED
PENSIONERS WELCOMED

SE HABLA ESPANOL

MEMBER OF CALIFORNIA SOCIETY DENTAL SURGEONS

DR. TARR
CREDIT DENTIST

FA 8-0250 For Low Prices

2418 TORRANCE BLVD., NEAR CRENSHAW

Modern Ground Floor Offices with ample parking and air conditioning for your convenience.

SPECIAL PURCHASE SALE!

hand carved
**TIKI
PLANTER
POLE**

7 Ft. . . \$4.88

4 Ft. . . \$3.88

- Luau Party Rentals
- Hatch Covers
- Bamboo Poles
- Fish Nets - Cork



Trader Luke

630 Channel, San Pedro TE 2-9810
OPEN 7 DAYS A WEEK



EACH ACCOUNT INSURED UP TO \$10,000

SAVINGS GROW BY LEAPS AND BOUNDS AT SOUTHWEST SAVINGS

It's that powerful 4½% that makes the big profit. And the more you save, the greater your earnings. So move slow-moving savings and no-profit checking accounts to Southwest Savings now. You'll find your insured Southwest account is the soundest, most profitable investment of all. If transportation's a problem, try Southwest's convenient "save by mail" plan. Funds received by the 10th of any month start earning from the 1st.

Southwest Savings AND LOAN ASSOCIATION
INGLEWOOD: 2700 W. Manchester (at 6th Ave.) PL 3-2164
TORRANCE: 1603 Crenshaw (at Marcelina) FA 8-6111

GIFTS OF BLUE CHIP STAMPS
• for new accounts
• or additions



Open Monday thru Thursday 9:30 am - 4:00 pm; Friday to 6:00 pm
ASSETS OVER \$59,000,000