

ARE YOU ELIGIBLE?

CMA

CONSUMERS MART
of AMERICA

TO JOIN THE WORLD'S LARGEST
MEMBERSHIP Dept. Stores

CONSUMERS MART OF AMERICA

GRAND OPENING

2nd Great Store

THURS. APRIL 20th
TORRANCE

20225 So. Western Ave. JUST NORTH OF TORRANCE BLVD.

YOU CAN MEET

★ **JERRY LEWIS** and
★ **GEORGE RAFT** IN PERSON
12 NOON, THURS., APR. 20—OPENING DAY

CMA Anaheim & Torrance Open to the Public
PREVIEW WEEK APRIL 20-26, ONLY!



An Invitation from
GEORGE RAFT
Vice President of CMA

To my Southern California friends:
I would like to extend a cordial invitation to all of my friends who are eligible, to visit and join CMA.
I am very gratified and happy to be part of a venture that will do so much towards stretching your dollar in these times of inflation and high costs of living.
I am looking forward to seeing you and greeting you personally during our grand opening week.

Best Wishes,
George Raft

COMPLETE SHOPPING CITY AND GIANT SUPER MARKET

★ 15 ACRES ★ SERVICE STATION ★ PARKING FOR 1500 CARS
★ 152,000 SQUARE FEET OF QUALITY-SERVICE-VALUES

What Can You Buy at CMA? Why Should You Join CMA?

Everything for your HOME, FAMILY and CAR
... If eligible! YOU SAVE Hundreds of Dollars Annually... Because of Pool Purchasing Power, Low Overhead, Modern Economy in Buying, Selling, Transportation and Handling!
Savings up to 50% • EVERYDAY Low Prices, Store-Wide • National Brands, All First Quality Merchandise • One-Floor Shopping • Air Conditioned Year Round • Acres of Free, Paved, Lighted Parking — for 1500 Cars • On-the-Spot Credit • Checks Cashed Free for CMA Members • Service for Your Car • Many Extra Benefits ONLY for you.

PLUS 32,000 SQ. FT. SUPERMARKET A WONDERLAND OF FRESH MEAT, PRODUCE, GROCERIES AT HUGE SAVINGS. CMA MEMBERS ONLY!

CMA Is Your Store If You Are

- Government Employee — City, County, State or Federal.
- Member of the Armed Forces or U.S. National Guard (Active or Retired)
- Public Service or Public Utility Employee (Phone, Power, Gas, Water)
- Employee of Non-Profit Public Service Organization
- Receiving Govt. Pension, Annuity or Social Security Payments
- Employee of firm working under Government Supervision or Contract

ANNUAL MEMBERSHIP FEE \$2.00

Store Hours:

Tues.—Fri.
12:30 to 9:30 P.M.
Sat. 9 A.M. to 6 P.M.
Sun. Noon to 6 P.M.

CLOSED MONDAYS

Except Preview Week

GRAND OPENING CELEBRATION in TORRANCE!

★ Meet **JERRY LEWIS** Starting in "Ladies Man" & **GEORGE RAFT** in Person!
OPENING DAY, NOON THURS., AT CMA TORRANCE

★ **KTLA SALUTES CMA-WEEK ON TV** SEE THRILLING TELECASTS DAILY FROM CMA — TORRANCE — STARTS THURSDAY

- ★ **LARRY FINLEY** ★ **SKIPPER FRANK** ★ **BOZO THE CLOWN**
- ★ **DOROTHY GARDINER** ★ **TOM HATTON (Popeye)** ★ **Plus Popular Radio Disc Jockeys—In Person**

CMA YOU MUST SHOW PROOF OF ELIGIBILITY!
Membership Application
CONSUMERS MART OF AMERICA
World's Largest Membership Dept. Stores

1440 S. Los Angeles St., ANAHEIM 20225 S. Western Ave., TORRANCE

The sum of \$2 is tendered, 1.50 for subscription to CMA News, 50c for non-assessable, non-transferable Annual Registration in the above organization by the undersigned applicant, who agrees to abide by the rules and regulations thereof.

Name Date

Address City Zone

Home Telephone Work Telephone Approved By

Employed by

I am eligible as a

(Fill in Group)

I hereby certify the above information to be true and I further understand only myself or spouse may use my Registration Card. Any misrepresentation, imperfections, or abuse of privileges will result in cancellation of my registration.

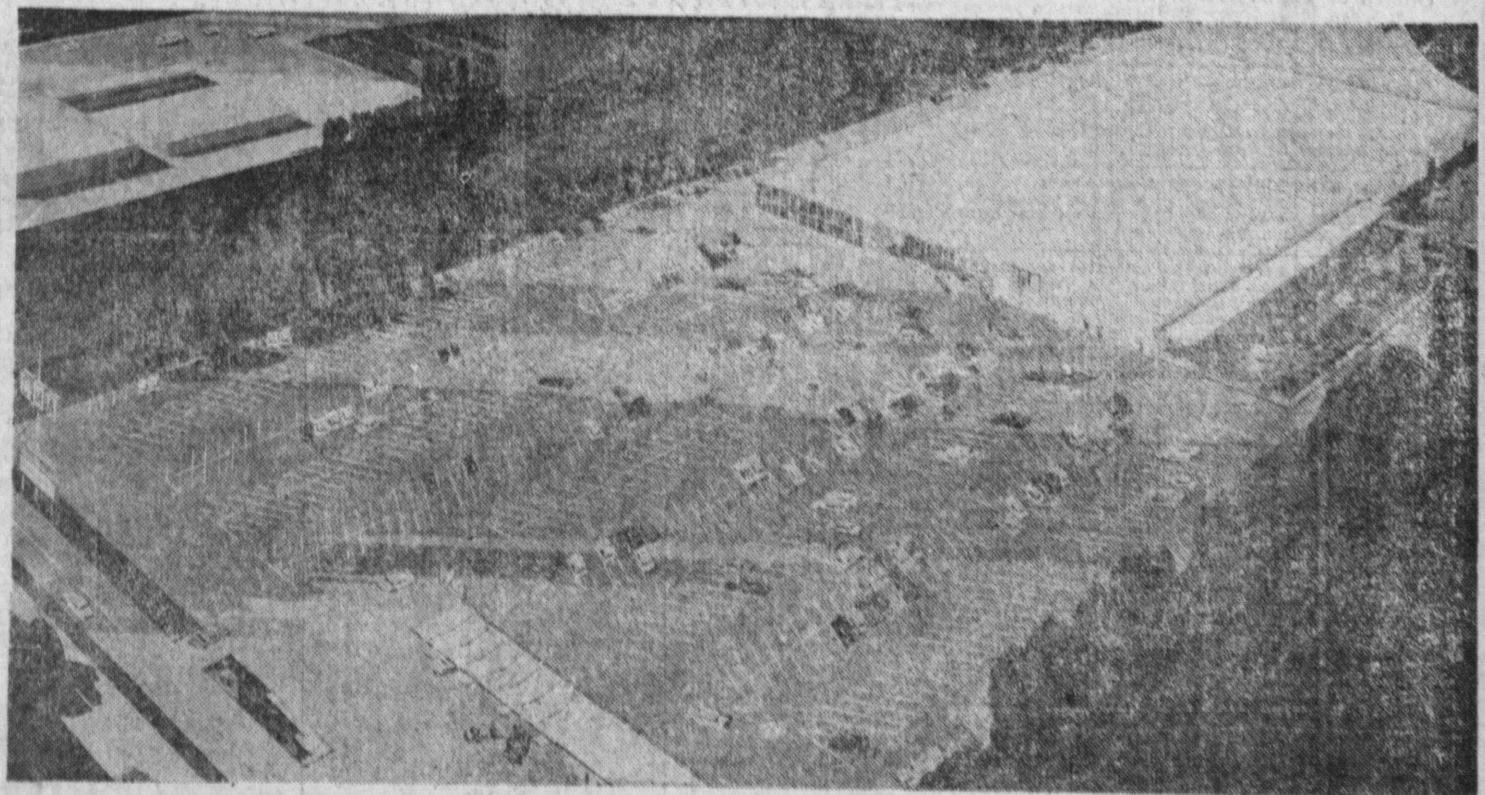
(Applicant's Signature) (Spouse's Signature—may use same card)

FEE REFUNDED WITHIN 60 DAYS IF NOT SATISFIED

ALL ROADS LEAD TO CMA



CMA ANAHEIM
1440 S. LOS ANGELES ST.
Just Across the Highway from Disneyland



GENERAL PUBLIC ADMITTED PREVIEW WEEK, APR. 20-26