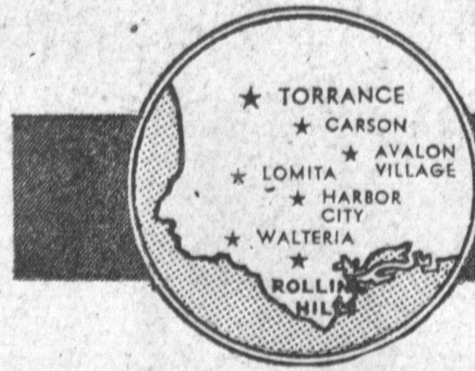


# Hollywood Youth Dead in Auto Crash

**24-Hour  
Want Ad Service  
DA 5-1515**



THE PRESS IS THE HOME-OWNED NEWSPAPER OF TORRANCE

## TORRANCE PRESS

3238 SEPULVEDA BLVD., TORRANCE, CALIFORNIA

**Inside the Press**

Inside Your Home ..... 10A  
Classified ..... 5B-8B  
Sports ..... 3B  
Darlene Cope ..... 3B  
TV Log ..... 7A  
TV Highlights ..... 8A  
Women ..... 1B

VOLUME XII, NUMBER 101

SUNDAY, APRIL 16, 1961

10c A COPY

# Tremendous Interest Shown in Tuesday's School Board Race

## Tomorrow Final Day For Filing Tax Returns

Tomorrow is the last day for filing income tax returns. Because of the 15th falling on Saturday, the deadline was extended to midnight Monday, April 17.

Taxpayers in Southern California were notified by R. A. Riddell, district director of Internal Revenue, that all offices of the Internal Revenue Service would close promptly at 4:45 p.m., Monday, April 17. Riddell said that all taxpayers who want to avoid delinquency penalty must file their returns in time to have them postmarked prior to 12 o'clock midnight, Monday.

Last day for State income tax returns to be filed without incurring a delinquency penalty, is Monday, April 17.

**OPEN UNTIL 9 P.M.**  
Permanent offices of the Franchise Tax Board throughout California will remain open until 9 p.m. to assist taxpayers with their returns.

Income tax returns filed by mail should be addressed to the Franchise Tax Board, 1025 P St., Sacramento 14. Returns postmarked before midnight will be accepted without a penalty.

For aid with State returns, taxpayers may call in person at any of the permanent offices. Auditors will be available until 9 o'clock Monday night to help taxpayers.

If single and net income was \$15,000 or more, or if married and net income was \$3,000 or more, taxpayers are required to file a State income tax return for 1960.

The nearest Franchise office is 3905 Atlantic Ave., Long Beach. For further information, call GA 6-2553.



READY FOR ELECTION—Group of candidates and incumbents to the Torrance school board, who have attended virtually all of the 70-plus study and discussion group sessions set up by interested parents and taxpayers, posed briefly for

this photo Friday night. Ready for the final appearances before the election are Robert Ellis, Bert M. Lynn, Dr. Kurt Shery, Albert Charles, William J. Hanson, Mrs. Patricia Huber and Gordon Phillips.

## Sixteen Candidates Vie for Three Posts

Torrance residents and property owners will vote Tuesday to determine which three of the sixteen candidates for the school board will be successful.

A hard fought battle to make their platforms known has been waged by each of the contenders, candidates and incumbents alike.

The three incumbents, Mrs. Grace Wright, Joseph G. Arnold, and Robert Ellis, are being challenged by the 13 new candidates for the posts. There is a strong feeling that the popularity of some of the new candidates plus the strength of their platforms may unhorse at least two of the incumbents.

Leading the field of candidates are Bert M. Lynn, president of the Torrance Planning Commission, and William J. Hanson, active in local educational circles. Lynn, Hanson and Albert Charles have been endorsed by T.I.P., Torrance Interested Parents, by the Torrance Press, and by virtually all of the interested groups studying the platforms of the candidates.

Dr. Kurt Shery, prominent Torrance physician, whose platform stresses the fundamentals of education, is also one of top contenders for the post.

**FOUR STUDY GROUPS**  
Candidates and incumbents alike have toured meetings and study groups to explain their platforms

and the programs they advocate. Lynn and Hanson stated that they have attended some 70 of these discussion sessions within the past six weeks and are tremendously impressed with the interest being shown in the election and with the grasp of the issues shown by their questions.

Other candidates striving for the posts include Gordon Phillips, attorney; Dr. Burton Easley, dentist; Henry B. Carriero, law student; Mrs. Patricia Huber, education student; David Lyman, attorney; Jack C. Knibb, teacher; James B. Miller, plant management specialist; and Nat P. Mondati, Torrance businessman.

## EDITORIAL...

## Candidate Stresses Better Education, Less Extravagance

Most of the new candidates for election to the Torrance Board of Education have stressed in their platforms the great need for economies and the elimination of frills and non-essentials from the annual budget of the local district.

At a time of governmental economies and a high unemployment rate the sight of an extravagant district, squandering tax dollars, has impressed each of them.

One man, in particular, has taken exception to the free-wheeling of the district.

This candidate, Bert M. Lynn, has been the community's most outspoken critic of the financial structure which each year burdens the home owner of the largest share of property taxes.

**CONSERVATIVE**  
Despite the outraged cries of the present school administration, Lynn's platform is basically conservative. He stresses the need for savings in the non-essential areas in order to get a greater value from each tax dollar spent.

He is just as strongly opposed to any measure that would decrease the quality of education in the district. He has pointed

out that money saved by the elimination of the frills could be used to increase teaching standards in the community.

Lynn, with his proven record as a successful businessman, as an engineer, and as a keenly analytic viewer of school policies, has, upon analysis, just two planks in his platform.

He strongly favors conservation of tax funds and the complete elimination of improper spending; equally as strong, he favors the maximum education of children to equip them for later life.

**LARGEST BUSINESS**  
The school district, with its huge number of employees and its \$11,500,000 annual budget is the community's largest business...

... And it is completely supported by the taxpayer.

Lynn's proposal to eliminate illegal closed board meeting and to form area citizens' advisory committees to assist the board and keep the parents informed of school board actions, puts the homeowner and taxpayer back where he belongs.

... As a shareholder in this huge business he supports.

## DEAD ON ARRIVAL...

## North Hollywood Youth Killed Friday in Broadside Collision on Hawthorne Blvd.

A 20-year old North Hollywood youth was killed Friday evening in a broadside collision at the corner of Hawthorne and Lomita Blvd.

Pronounced dead on arrival at Little Company of Mary Hospital was Peter Lynn Edwards, 20. Driver of the second auto, Daniel James O'Neil, 34, of 5609

34, of 5609 Konya Drive, was treated for extensive bruises and lacerations and was released yesterday.

There were no passengers in either of the two vehicles.

Investigating officers said that the vehicle driven by O'Neil was traveling north on Hawthorne where

he was struck broadside by the car driven by Edwards.

Witnesses said that Edwards had been driving in excess of 80 miles per hour when he entered the intersection. Both cars were demolished.

Speed limit on Lomita as it approaches the crossing is 45 miles per hour.

Traffic officials pointed out that this is the third injury accident on Hawthorne Blvd., in four days, two at the intersection of Sepulveda and one at Lomita.

Accidents have involved injury to five people including the one traffic fatality.

## Lomita School Plans Approved

Preliminary drawings for additional facilities and alterations to the main building at Lomita Elementary School, 2211 W. 248th St., Lomita, were approved this week by the City Board of Education, it was announced today by Superintendent of Schools Ellis A. Jarvis.

The firm of Orr, Strange, Inslee and Senefeld are now beginning working on final drawing specifications for the \$265,000 construction program, Jarvis stated.



It's so easy to place your Press Want Ad—just pick-up the phone and call DA 5-1515 anytime. We will be glad to help you word a result-getting low cost want ad. Turn your Don't Needs into ready cash. Call DA 5-1515 now.

## CP Association Seeks Volunteers From Torrance

Volunteer organization of the United Cerebral Palsy Association's May campaign is well underway. Mrs. Dan Brown, of 16021 Matfield Drive, reported this week.

"But we still need volunteers urgently," points out Mrs. Brown, chairman for Torrance. "If you can help us at all, even for a few minutes a day, please call me."

Telephone number of the Torrance chairman is DA 5-0112.

United Cerebral Palsy Association's fund-raising campaign will support five Los Angeles County area nurseries for pre-school children 1 1/2 to 3, four development centers for children 3 to 16, an industrial training workshop for adults, and extensive counseling facilities. There is a UCP nursery at 4031 Wilton Street, Long Beach.

Cerebral palsied children are waiting for a chance to enter the nurseries and centers, whose facilities are limited. Mrs. Brown points out: a successful campaign can give them the opportunity to have badly needed therapy.

## Okay Plans For Fire Station

The office of Supervisor Burton W. Chace this week announced approval of the schematic plot plan for Fire Station No. 59 at Harbor General Hospital.

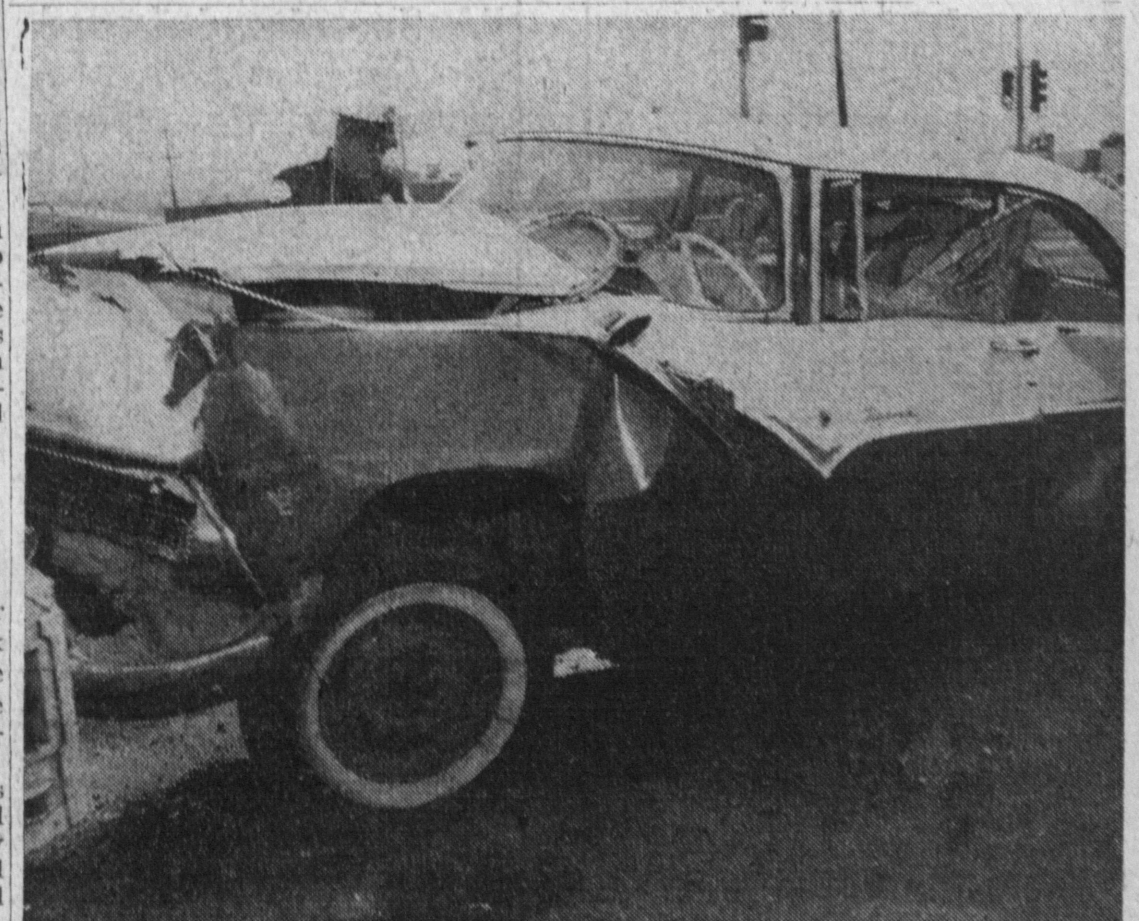
The Board of Supervisors approved the plan prepared by architect Roy A. Sealey after they had been reviewed by the County Engineer and approved by the Chief Engineer of the Fire Department and the Administrator of Harbor General Hospital.

Tentative cost of construction is estimated at \$52,000 and is based on actual construction cost of Fire Station No. 111 in 1959.



**LIBRARY PLANS**—Members of the Walteria Businesswomen's Club met with Councilman J. A. Beasley last week to go over plans for the new 4000-square-foot library to be constructed in Walteria after the new budget is

approved. Plans will also be used for the proposed facilities in West and North Torrance. Shown looking over the drawings are Beasley, Mrs. Glenn Maxwell and (standing) Ruth Griffin and Mrs. Gerald Butts.



**DEADLY CORNER**—Three women were injured in a three-car pileup at the corner of Hawthorne and Sepulveda Wednesday afternoon. Deadly intersection was the scene of two accidents in two days involving injury to four persons. Women, Dianne Ogden, 18, of Redondo Beach, who was thrown from her

car, Sally M. Severence, 18, of 22801 Elm St., and Josephine Fiterman, 43, of Los Angeles, were all taken to Little Company of Mary Hospital. Here Torrance traffic official looks over wrecked car from which Miss Ogden was thrown.