



GRID GREATS CONGRATULATED — Best wishes were extended to four El Camino College grid stars of 1960 by Coach Norm Verry last week. The quartet, all winners of the Metropolitan Conference honors, will again be acclaimed at the college's Athletic Awards Banquet Jan. 12. From left, players are Joe Costanza, Hawthorne; Ron Veres, Torrance; Gene Burelson, Inglewood; Verry; and Jim Hester, Torrance.

'Inherit the Wind,' Midwinter Play at El Camino College, to Open January 13

"Inherit the Wind," El Camino College midwinter play, will be presented in the college campus Theater, January 13, 14, 20 and 21.

Directed by Burnett Ferguson, theater-arts instructor, and student assistants Cliff Potts and Ed Crosby, the play is scheduled to feature experienced theater arts majors.

The two main leads in the production, Henry Drummond and Mathew Harrison Brady, will be played by David Violette and Gary Sturn, respectively.

LOCAL ACTOR
Violette, of Lawndale, appeared in the El Camino production "Kiss Me Kate" and in local plays, "Mousetrap," and "White Cargo." He directed "Speaking of Murder." Violette has hopes of becoming a professional actor.

career, Sturn has studied for a year under Eric Feidary.

TEACHER
Ed Crosby, Torrance, plays the part of Bertram Cates, a young school teacher. Crosby has previously played in ECC productions "Guest in the House," "Twelfth Night," and "The Remarkable Mr. Penny-packer." He has gained other experience in "Compulsion" at the Chapel Theater. This is Crosby's first attempt at directing a play longer than one act.

From the recent ECC play "Ladies in Retirement" comes Cliff Potts of Manhattan Beach, the radio announcer in "Inherit the Wind." Potts has previously held leads in several productions on campus.

OTHERS IN CAST
Other cast members include Jim Sena, Redondo Beach; Silvia Granieri, Inglewood; Kathleen Dosche and June Doty, Manhattan Beach; Frank Cosentino and Lorraine Struckman, Torrance; Dean Robles, Gardena, and Use Press classified ads to buy, rent or sell. Phone DA 5-1515.

WELL KNOWN FACT
that perennials will do better if planted now instead of waiting for early spring to set them out. Their roots take hold during the cool months and sturdier, more prolific plants are the result.

CANADIAN NICKEL FOR U.S.
The United States for many years has relied on Canada for almost all of its nickel supplies, particularly its supplies of refined metallic nickel.

IMPORTANT NOTICE!

WE WILL BE CLOSED SUNDAY, MONDAY, TUESDAY, WEDNESDAY

January 1 Through January 5, 1961

For Inventory



212 South Pacific Ave.
Redondo Beach FRontier 6-3444

Education Commissioner Guest of Torrance Jaycees on January 5

Dr. William V. Lawlor, chairman of the Citizens Advisory Commission on Public Education in California, will be guest speaker at a meeting sponsored by the Torrance Junior Chamber of Commerce at the Palms Restaurant at 8:30 p.m. on January 5.

This committee has been meeting for two years throughout the state to study every phase of education in California and to hear viewpoints from the public, teachers and educators, and is now ready to submit its final report to the State Legislature early in January. Dr. Lawlor will be discussing some of these recommendations at this public meeting.

Dr. Lawlor is a dentist by profession in Glendale, and a member of the American Dental Association and the Southern California Dental Association. He was a delegate to the White House Conference of Education, the Governor's Conferences on Education, Juvenile Delinquency and Youth.

Anyone wishing to make reservations for the dinner preceding Dr. Lawlor's address may do so by calling Gordon Phillips, Frontier 8-5566. The dinner will begin at 6:30 p.m., and will cost \$3. There is no admission charge to hear Dr. Lawlor's address.

NICKEL-PLATED EQUIPMENT
Processing and transportation equipment if often nickel-plated to prevent product contamination.

GOVERNMENT SURPLUS SALES
NOW anyone can buy DIRECT from U.S. GOVERNMENT SURPLUS DEPOSITS by mail for yourself or for resale. Cameras, binoculars, cars, lenses, trucks, boats, hardware, office machines and equipment, tents, tools and tens-of-thousands of other items at a fraction of their original cost! Many items brand new. For list of hundreds of U.S. Government Surplus Deposits, located in every State and overseas with pamphlet "How Government Can Ship Direct to You," plus procedures, HOW TO BUY and how to get FREE SURPLUS, mail \$2.00 to SURPLUS SALES INFORMATION SERVICES, P.O. Box 1818, Washington 5, D.C.

GOOD NEWS about GLASSES

FOR SENIOR CITIZENS AND PENSIONERS

IF YOU ARE RECEIVING OLD AGE SECURITY PAYMENTS NOW YOU CAN GET OUR EXAMINATION AND GLASSES NO PERSONAL COST TO YOU PAID BY THE STATE OF CALIFORNIA


- EMERGENCY REPAIRS
- CONTACT LENSES
- HEARING AIDS

PERSONAL ATTENTION AND SERVICE

No delay, no extra trips... I will personally help you get your glasses. Your precious eyes will be examined with the most modern equipment and methods to determine your prescription. Your lenses will be ground with care and accuracy, and special assistance will be given in selecting appropriate, stylish frames best suited to your appearance. No time or effort will be spared to see that your glasses fit properly.

ASK ME ABOUT **BLENDED LENSES**

LOOK YOUNGER—EASIER VISION FAR AND NEAR



Awkward Dividing Line → ← No Dividing Line in Original Blended Lens

Even if you are not receiving old age security payments or state medical assistance, you can get your glasses on easy terms and credit.

Dr. M. M. Saks-Dr. R. A. Vendeland
OPTOMETRISTS

1304 El Prado Ave. Torrance
FA 0-190 - Free Parking in A&P Lot
* to 5:30 Daily—Saturday 11 to 4 p.m.—Monday 11 to 4 p.m.

Focus on Future Theme of School Advisement Night

Parents of all Torrance high school students, are cordially invited to attend an Education Advisement Night which will be held in the Torrance High School Auditorium, 7:30 p.m., January 10.

Three high schools in Torrance are sponsoring this activity in one evening meeting to obtain the representatives from as many colleges and technical training institutions as possible. The representatives will discuss college entrance requirements, course offerings, campus life, and other important considerations for parents who plan to send their students on to school.

A large group meeting will begin promptly in the auditorium at 7:30 p.m. followed by smaller group meetings with the college representatives from 7:45 to 9:30 p.m. Refreshments will be served from 9:30 to 10 p.m.

Dr. Carl Ahee, Torrance high school principal, will welcome parents and introduce the college representatives. The theme of the evening will be "Focus on the Future."

Unemployment Hits New High in South Bay

Unemployment in the South Bay area is up more than 6000 for the month of December, compared to a year ago.

Comparison was based on unemployment compensation claims being paid by the Torrance office of the California Department of Employment.

During December, 1959, 11,132 claims were paid, compared to about 18,000 being paid this year.

Spokesmen for the office said that unemployment exists in all fields, but a large number of the applicants formerly worked for aircraft and steel plants.

This month the Torrance office has made about 300 placements, only slightly more than the 547 made a year ago. Most persons placed have been skilled workers.

U.S. STAINLESS STEEL SALES TO INCREASE
According to market research studies by International Nickel, stainless steel sales in the United States will reach 1,112,000 tons in 1967. This is an increase of 87 per cent over sales in 1957.

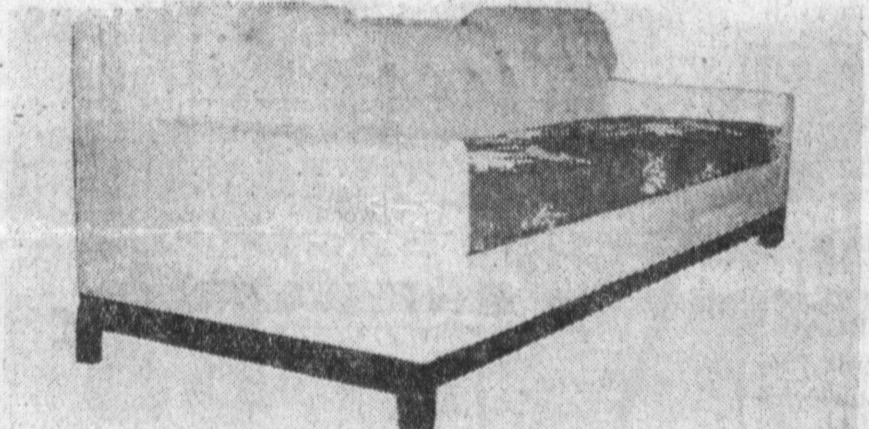
Cash and Carry



Homo-Past. **MILK** qt. **20** 1/2c

PALOS VERDES VIEW DAIRY
22845 Hawthorne Bl.
FR 5-8615
Torrance's Drive-In Dairy

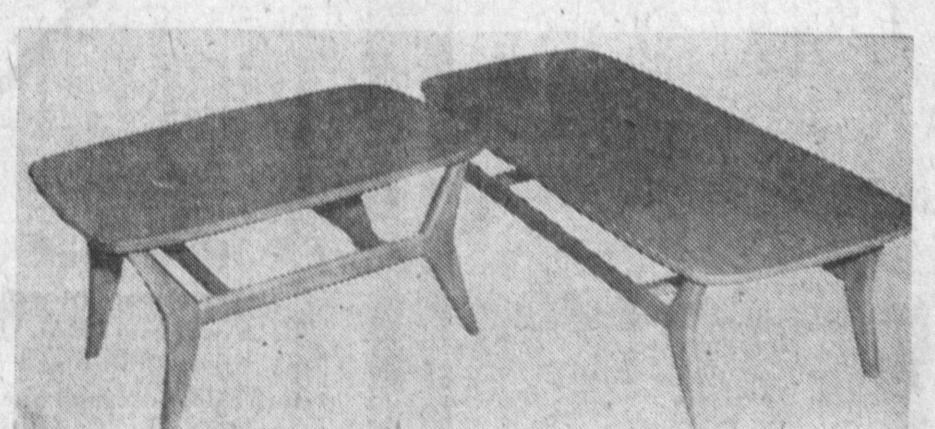
We Want to Clean House of all 1960 Floor Samples So We've SLASHED Every PRICE for this Once-a-Year Event...



SOFAS:

	Was	Now Save
Pictured: with Deluxe Base plus extra covers for cushions	\$239.00	\$101.00
Pillow Back, 7 Ft. Green	\$210.00	\$ 60.00
Tufted Back, Brown	\$249.00	\$129.00
Quilted Print	\$265.00	\$100.00

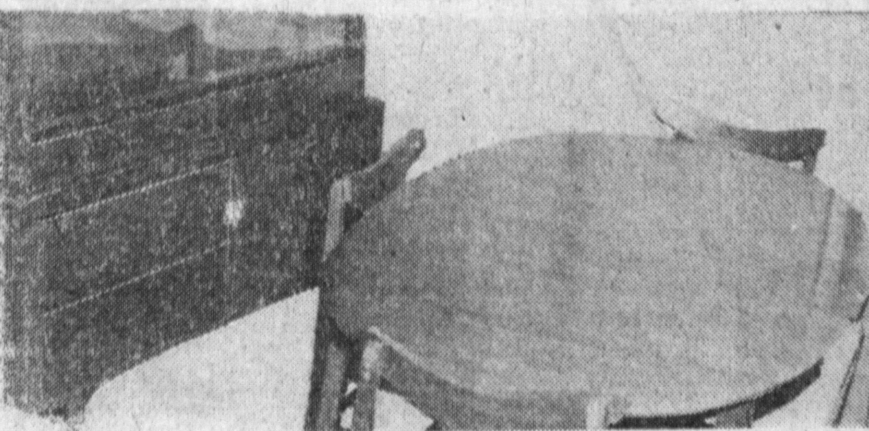
Many, Many More to Choose From



TABLES:

	Was	Now Save
Pictured: A 3-Piece Set. (1-Coffee, 2-Ends)	\$ 88.50	\$ 28.50
Nest of 3 Tables; Formica top	\$ 49.95	\$ 13.95
36" Round, Marble Top, Pedestal Base	\$148.00	\$ 48.00
36" Round, Marble Dining-Game Table	\$168.00	\$ 74.00

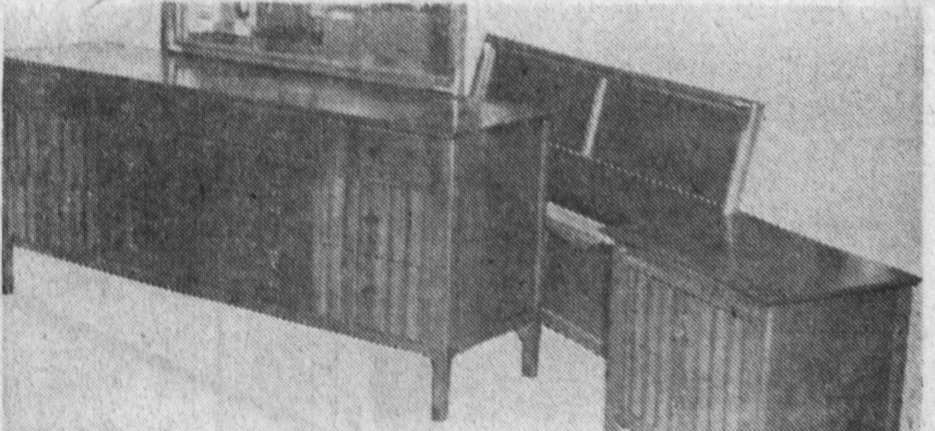
Dozens of Others. All Sizes, Shapes and Finishes at Big Reductions



DINING ROOM:

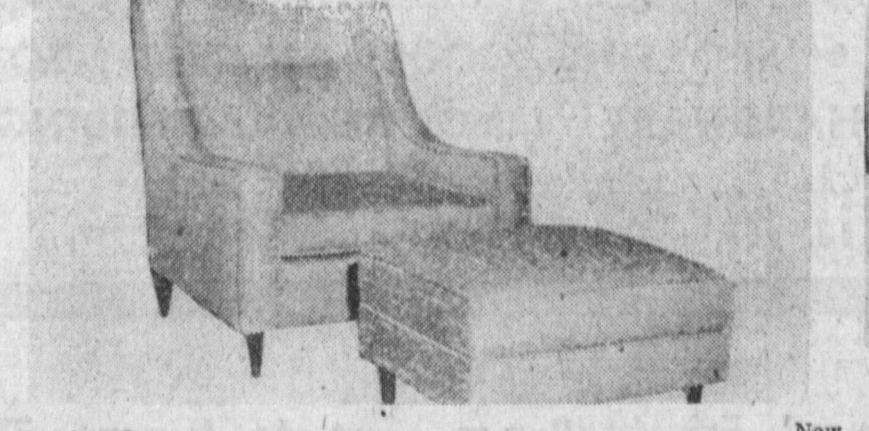
	Was	Now Save
Pictured: Large oval table with chairs and spacious China, Bergentan Walnut, complete	\$309.75	\$ 41.00
6-Piece "Legacy" Dining Set by American of Martinsville	\$ 579.00	\$210.00
7-Piece Candlelight Dining Group	\$451.75	\$162.75
5-Piece Walnut Set, Brown Saltman	\$439.00	\$199.00

Many, Many Others to Choose from



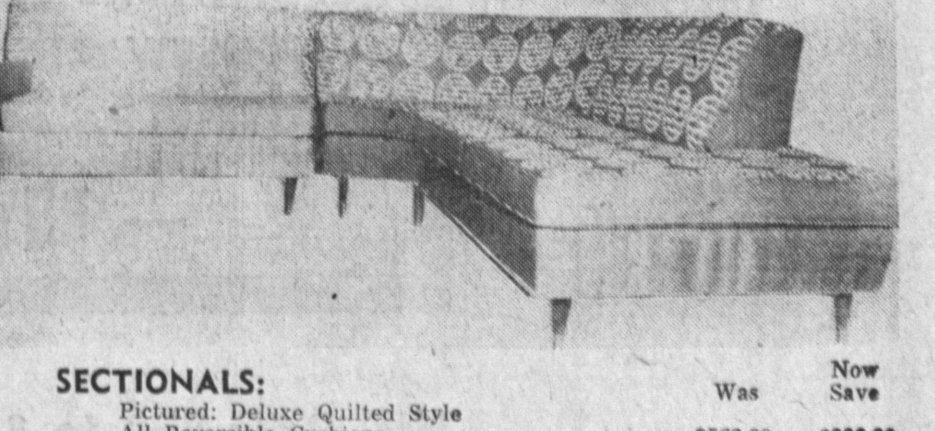
BEDROOM:

	Was	Now Save
Pictured: Extra large triple dresser, bed, 2 Commodes and Mirror, African Teak	\$338.00	\$ 90.00
Candlelight Group with Triple Dresser and Mirror, Bed, Night Stand and Hi-Chest	\$374.75	\$146.75
Danish Walnut, Triple Dresser, Framed Mirror, Bookcase Bed and Night Stands	\$309.50	\$129.50
Oriental Ebony Group, Large Dresser, Mirror, Bed and 2 Commodes	\$389.95	\$189.95



CHAIRS:

	Was	Now Save
Pictured: Hi-Back Chair with Ottoman	\$129.50	\$ 50.00
Large Barrel Back, Surf Color	\$ 98.00	\$ 30.00
Aqua Naugahyde Lounge	\$ 99.50	\$ 31.50
Hi-Back, Tangerine Fabric	\$139.50	\$ 60.00



SECTIONALS:

	Was	Now Save
Pictured: Deluxe Quilted Style All Reversible Cushions	\$562.00	\$200.00
Tuxedo Sectional, Pillow Back, All Foam, White Naugahyde	\$499.00	\$120.00
Curved 2-Piece Sofa Bed	\$386.00	\$100.00
2-Piece Walnut Arms Brown	\$146.00	\$ 46.00

Many, Many Others to Choose from

OPEN MONDAY, THURSDAY AND FRIDAY NIGHTS 'TIL 9:30

alpert's FURNITURE

20502 Hawthorne Blvd. (3 Blocks North of Torrance Blvd.) FR 1-1513

ALL SALES FINAL—NO REFUNDS OR EXCHANGES DURING THIS SALE