

YOUR FRIENDLY TESTY GUNS SUPREME

TO YOU

9c

9c

9c

33c

BLADE CUT PORK CHOPS

SO TASTY 45c lb

LOIN END PORK ROAST

TOP VALUE 49c lb

Border MARKETS

LIMIT RIGHTS RESERVED

3 BIG LOCATIONS | PAY ALL YOUR UTILITY BILLS HERE

CORNER OF AYALON AND E. 223rd STREET

5305 TORRANCE BLVD. AND HENRIETTA ST., TORRANCE

PRAIRIE AVENUE AT REDONDO BEACH BLVD.



Bondified MONEY ORDERS

The convenient, one stop way to pay all bills.

ANOTHER ONE OF BORDER'S HAWG WILD

"PORK SALE"



SPECIAL

EASTERN GRAIN FED PORK, WITH THAT DELICIOUS FRESH

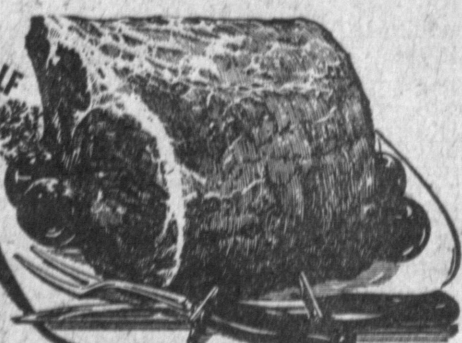
PORK FLAVOR

CENTER CUT PORK CHOPS

59c lb.

PROPERLY TRIMMED FOR YOUR EATING PLEASURE

PORK LOINS



EXTRA VALUE!

53c lb

OH, SO GOOD WITH OUR PRODUCE!

COUNTRY STYLE SPARE RIBS Lean 'n Meaty 49c lb

BORDER'S OWN PORK SAUSAGE MILD or HOT 29c lb

ROSE—8-oz. Pkgs. FISH STICKS LIKE FISH 'N CHIPS? 2 FOR 49c

ROSE—BREADED—1 1/2-lb. Pkg. SHRIMP Family Pack \$1.29

LUER'S FULLY COOKED BONELESS HAM 79c lb

CENTER CUT BONELESS HAM SLICES 89c lb

INS • SAVE AT BORDER'S • SHOP AT BORDER'S • BUY

SHOP AT BORDER'S • BUY BORDER'S BARGAINS • SAVE AT BORDER'S • SHOP AT BORDER'S • BUY BORDER'S BARGAINS • SAVE AT BORDER'S • SHOP AT BORDER'S • BUY

LEGAL NOTICES

IN THE MATTER OF COUNTY IMPROVEMENT NO. 2142 OF THE COUNTY OF LOS ANGELES FOR THE IMPROVEMENT OF 27TH STREET AND OTHER RIGHTS OF WAY NOTICE INVITING BIDS

Notice is hereby given that the Board of Supervisors hereby invites sealed proposals or bids for the construction of walk in County Improvement No. 2142...

Each submitted proposal must be accompanied by a check certified by a responsible bank or by a bond, payable to the County of Los Angeles...

PREVAILING WAGE SCALE The Board of Supervisors has ascertained the prevailing rate of per diem wages in dollars, based on a working day of eight hours...

Provided that notwithstanding the general provision contained herein, Guards and Watchmen shall be paid one and one-half times the prevailing rate for overtime...

APRENTICES—May be employed in conformity with Section 1777.5 of the California Labor Code...

Effective Prevailing As Indicated

BRICKLAYERS:		
Bricklayer and Stone Mason	\$4.20	\$4.35
Bricklayer	2.85	2.81
Health and Welfare—10c per hour		
CARPENTERS:		
Health and Welfare—10c per hour		
Pension Fund—10c per hour		
Foreman Differential: Not less than 25c per hour more than the hourly rate of the highest classification over which he has responsibility, excluding the classification Pneumatic Nailer.	2.825	
CEMENT MASONS:		
Health and Welfare—10c per hour		
Cement Mason Foreman: Not less than 25c per hour more than the highest classification over which he has leadership.	4.10	4.20
Cement Mason	3.85	4.04
Curb Form and Plank Setter, including setting of lines, stakes and grades		
OPERATING ENGINEERS:		
Health and Welfare—10c per hour		
Pension Fund—10c per hour		
Foreman: Not less than 25c per hour more than the hourly rate of the highest classification over which he has supervision.	4.1-41	
Air Compressor, Pump or Generator Operator	3.55	3.58
Engineer-Orler and Signalman		
Heavy Duty Repairman's Helper		
Concrete Mixer Operator-Skip Type		
Conveyor Operator and Beltman		
Equipment Greaser		
Generator, Pump or Compressor Operator (2 or more portable units)	3.87	3.77
Generator, Pump or Compressor Plant Operator		
Skiploader—Wheeltipe—Ford		
Ferguson, Jeep or Similar Type 3/4 yard or less (Without Dragtype Attachments)	3.81	4.01
A-Frams or Winch Truck Operator		
Asphalt Plant Fireman		
Ford, Ferguson or Similar Type (With Dragtype Attachments)		
Power Concrete Saw Operator		
Ross Carrier or Fork Lift Operator (Job Site)		
Roaman or Mixer Box Operator (Concrete or Asphalt Plant)		
Grade Checker		
Power Sweeper Operator		
Roller Operator	3.92	4.12

LEGAL NOTICES

Screed Operator		
Trenching Machine Operator (Up to 7-foot Depth Capacity, Manufacturer's Rating)		
Asphalt or Concrete Spreading Mechanical Tamping or Finishing Machine Operator (All Types and Sizes)		
Asphalt or Cracking Plant Engineer		
Heavy Duty Repairman		
Pavement-Breaker Operator		
Road Oil Mixing Machine Operator	4.11	4.81
Skip Loader Wheel Type over 3/4-yard, up to and including 2 yards		
Tractor Operator—Dragtype Shovel, Bulldozer, Tamper, Scraper and Push Tractor		
Concrete Mixer Operator—Paving		
Concrete Mobile Mixer Operator	4.81	4.41
Elevating Grader Operator		
Loader Operator—Athey, Euclid, Sierra or Similar Type		
Motor Patrol Operator (Any Type or Size)		
Tractor Loader Operator, Crawler Type—All Types and Sizes		
Tractor Operator—Wash Boom Attachments		
Trenching Machine Operator (Over 7-foot Depth Capacity, Manufacturer's Rating)	4.81	4.41
Universal Equipment Operator (Shovel)		
Back Hoe, Dragline, Derrick, Derrick Barge, Clamshell, Crane, Pile Driver and Mucking Machine)		

The necessity for the use of an employee as a Signalman shall be determined by the Contractor. When used, he shall be an Engineer-Orler who assists in giving or relaying signals by mechanical means (also by hand signals on excavation work) directly to the Operator of hoisting equipment only.

LABORERS:		
Health and Welfare—10c per hour		
Foreman Differential: Not less than 50c per hour more than the Hourly Wage Rate of the highest classification over which he has leadership.	3.99	3.97
Asphalt Raker and Ironer	3.18	3.28
Concrete Curer—Impervious Membrane and Form Oiler	3.27	3.45
Concrete Saw Operator	3.29	3.47
Fine Grader, Highway and Street Paving Airports, Runways, and Similar Type Heavy Construction	3.18	3.34
Flagman	2.08	2.26
Guinea Chaser	3.16	3.34
Laborers General Construction	3.08	3.26
Laying of all Non-Metallic Pipe Including Sewer Pipe, Drain Pipe and Underground Tile	3.59	3.87
Making and Caulking of all Non-metallic pipe joints	3.27	3.45
Tarman and Mortarman	3.13	3.31
Tree Climber, Feller, Chain Saw Operator, Pittsburgh Chipper and Similar Type Branch Shredders	3.29	3.47
Watchman	2.60	2.80
PIPE TRADES:		
Health and Welfare—4c per cent of gross payroll		
Pension Plan—2 1/2c per cent of gross payroll		
Utility Pipeline Journeyman	4.33	
Health and Welfare—12c per hour		
LABORERS:		
Health and Welfare—10c per hour		
Boatman	3.846	3.788
Driver Dump Truck		
Less than 4 yds. water level	3.658	3.878
4 yds. but less than 8 yds. water level	3.598	3.808
Driver of Euclid Type Spreader Trucks	3.585	4.148
Drivers of Road Oil Spreader Trucks	3.545	3.768
Driver of Truck Legal Payload Capacity of: Less than 4 tons	3.365	3.578
6 tons to 10 tons	3.395	3.608
Truck Greaser and Mechanic	3.205	3.285
Truck Repairman	4.205	4.418
Truck Repairman Helper	3.475	3.685
Water Truck Driver	3.425	3.635

APPRENTICE SCHEDULE

The apprentice rate is by percentage of the journeymen's rate.										
	1st	2nd	3rd	4th	5th	6th	7th	8th	9th	10th
Bricklaying and Stone Masonry	3 Months	45	47.5							
6 months	50	50	50	50	50	50	50	50	50	50
6 months	75	78	81	84	87	90	93	96		
Carpenter	6 months	60	67	74	81	88	95			
6 months	54	58	62	66	70	74	78	82	84	90

The time within which the aforementioned work must be completed by the Contractor undertaking the same has been fixed at twenty-five (25) calendar days from and after the date of execution of the contract agreement.

By order of the Board of Supervisors of the County of Los Angeles, State of California, dated November 22, 1960.

GORDON T. NESVIG, Clerk of the Board of Supervisors

Torrance Press—Thursday, December 8, 1960.

DIAL-A-PRAYER

NON-DENOMINATIONAL

FA 8-3903

COURTESY OF HALVERSON-LEAVELL MORTUARY - TORRANCE

Use Classified Ads—Phone DA 5-1515

9c
49c
49c

There's a practical side* to Christmas, too!

*And nothing's more practical than your BankAmericard. You can use it to buy almost every gift on your list. And, if you like, you can budget your payments over several months.



BANK OF AMERICA

NATIONAL TRUST AND SAVINGS ASSOCIATION • MEMBER FEDERAL DEPOSIT INSURANCE CORPORATION