



DANCE PLANNERS — (left to right) Morey Dietrich, publicity; Al Hernandez, dance chairman; and Jack Gray, coordinator, plan for dancing with Nick Vargas and his orchestra, a buffet supper, and door prizes at the Parish Prom, Saturday, 9 p.m. until 1 a.m. at the Harbor City Retail Clerks' Hall. Sponsor of the dance is the Holy Name Society of St. Margaret Mary's Catholic Church.

Coeds in Cotton Vie for Queen at Harbor Today

Today is Cotton Day at Harbor College, according to an announcement by student body president Tom Orcher.

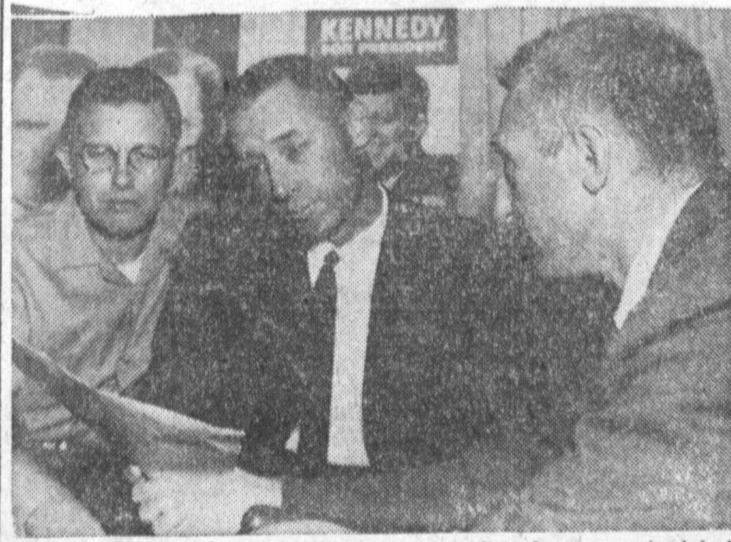
Recommended dress for the day will be cotton dresses for coeds and cotton shirts for men. Members of the Associated Women Student's cabinet will wear specially-tinted, cotton-plant corsages obtained from the Bakersfield-Fresno area.

Highlight of the day will be noon entertainment and dancing in the campus quadrangle. Among features of the program will be dance numbers by members of instructor Jean Marton's square dancing class, announcements by Siens Sanger and Tom Bettis, and the presentation of the Harbor College Cotton Queen.

The Queen, who will represent the college at a state contest in the college little theater. Judges will be instructors Jean Marton, Harold Jones, and Reuben Plaskoff, and students Tom Orcher and Helen Murphy.

Contestants will be judged on appearance, personality, background, and training. They may be single, at least 5'5" tall, between the ages of 19 and 25, and natives of a cotton-growing state.

The national winner will receive a complete cotton wardrobe and an extensive tour of the nation with all expenses paid.



FORUM COMMITTEE—Planning the political event scheduled for Friday, Oct. 28, 8 p.m., at the Campus Theater of El Camino College are Richard Oliver, Dan Wlalic and Victor Paieda. The forum is sponsored by the Pacific Unitarian Church.

Political Forum Set for Oct. 28

A political forum sponsored by the Adult Education Committee of the Pacific Unitarian Church will be presented Friday, Oct. 28, 8 p.m. at the Campus Theater of the El Camino College.

Participants are: Donald Frye, research director for Republican State Central Committee of California, and Republican associates; Frank Menkiewicz of the Democratic Party; and William Briggs, national committeeman of the Socialist Party.

The forum topic will be "How Relevant is the Question to the Future Security of the United States."

Cash 'n Carry

Inglewood Farms MILK

20 1/2c Qt.

Wholesale Outlet
3400 DEL AMO BLVD.
Across from Union Carbide
TORRANCE

FOR HOME DELIVERY CALL
FR 4-8971

Fall Choirs Set Rehearsal Times

The fall choir enrollment program has been started at the Narbonne Avenue Southern Baptist Church. They now sponsor five choirs under the direction of Edwin T. Isbell, minister of music. The largest choir enrollment in the history of the church has been reported, according to Isbell.

Rehearsals for the choirs are as follows: Sunday, Youth Choir, 5:30 p.m.; Wednesday, Junior Choir, 6 p.m.; Beginner and Primary choirs, 7 p.m.; Adult Choir, 8:30 p.m.

On Sunday at the 8:30 and 10:50 services, Pastor Robert A. Wells will speak on the eighth commandment in the current series of sermons on "Foundations for Happiness."

WE SPECIALIZE IN HIGH FASHION

- ★ Silver Blonding
- ★ Tinting
- ★ Contour Cuts

GLAMOUR UNLIMITED

20924 Hawthorne Blvd. Torrance
Near the Fox Mkt. FR 1-4466

Southwest Park Group to Meet

Parents interested in the type of play equipment to be installed in La Romeria Park, Inglewood Avenue and Darien Street, Torrance, are invited to express their views at the Southwest Park Civic Association meeting Monday evening, Nov. 7, at the Carl Steele Elementary School, 19300 Inglewood Ave.

An open discussion on proposed recommendations for the park, with emphasis on play equipment for teenagers, will highlight the meeting.

4 1/2% current rate per annum
Paid Quarterly

- accounts opened by the 10th earn from the 1st
- each account insured to \$10,000
- save a trip — save by mail

ASSETS OVER \$59,000,000

Southwest Savings AND LOAN ASSOCIATION

INGLEWOOD 2700 W. Manchester—at 6th Ave. Pleasant 3-2164
TORRANCE 1603 Cravens—at Marcellina Fairfax 8-6111

HOOVER FACTORY

DISCOUNT SALE 4 DAYS ONLY THURSDAY, FRIDAY SATURDAY & MONDAY

SAVE \$30.45

HOOVER CONSTELLATION

Reg. 79.95 **\$49.50**

Liberal Trade-in Allowance

Save \$25.45

Hoover **CONVERTIBLE**

Reg. 89.95 NOW ONLY **\$64.50**

USED CLEANERS From **9.95**

SALES AND SERVICE
Bags . . . Belts . . . Hose

P.V. SALES CO.

Downtown Torrance
1335 EL PRADO — FA 0-3411 — FREE PICKUP and DELIVERY

THE 61's ARE HERE-THE CLEAN-UP SALE IS OVER BUT WE'RE STILL OVERSTOCKED

BRAND NEW 1960 CHEVROLET CARS & TRUCKS SOLD UNDER DEALER'S INVOICE

CHOOSE FROM THE LARGEST STOCK IN THE HISTORY OF PAUL'S CHEVROLET—FIRST COME, FIRST SERVED—DEALERS INVITED

CHECK THESE EXAMPLES BELOW—SAVE NOW!—BUY NOW WHILE SELECTION IS GOOD!

<p>GOING HUNTING?</p> <p>1960 CHEVROLET TRUCK Complete With Camper</p> <p>Turn Signals — Big Rear View Mirrors</p> <p>PAUL'S LOW PRICE NOW ONLY \$1995</p> <p>LOW GMAC TERMS! GENERAL MOTORS INSURANCE ALL PRICES PLUS TAX AND LICENSE</p>	<p>Brand New 1960 1/2-Ton Pickups 32 to Choose From</p>	<p>1/2-Ton Longbed Pickup</p> <p>Stock No. 50T Turn signals, big window \$1824</p>	<p>Brand New 1960 Chevrolets Over 100 to Choose From ALL CARRY NEW CAR WARRANTY</p>
	<p>1/2-Ton Pickup Truck</p> <p>Stock No. 182T Turn signals, left door lock, white paint \$1764</p>	<p>1/2-Ton Longbed Fleetside Pickup</p> <p>Stock No. 118T Turn signals, big window \$1836</p>	<p>Impala Sport Coupe</p> <p>Stock No. 338 Powerglide, V-8, radio, heater, EZI glass \$2589</p>
	<p>1/2-Ton Pickup Truck</p> <p>Stock No. 189T Turn signals, foam seat, oil filter, big window, other equipt. \$1821</p>	<p>1/2-Ton Longbed Fleetside Pickup</p> <p>Stock No. 185T Turn Signals \$1799</p>	<p>2-Door Brookw'd Station Wagon</p> <p>Stock No. 411 Powerglide, V-8, 2-tone, radio, heater, white wall tires. \$2599</p>
	<p>1/2-Ton Fleetside Pickup</p> <p>Stock No. 217T Turn signals, foam seat, big window, heavy-duty springs \$1825</p>	<p>1/2-Ton Longbed Fleetside Pickup</p> <p>Stock No. 227T Heavy Duty Clutch and springs \$1814</p>	<p>4-Dr. Parkwood Station Wagon</p> <p>Stock No. 268 Powerglide, V-8, deluxe heater, EZI glass \$2664</p>
	<p>PAUL'S</p>		