

**YOUR GUIDE TO FINE DINING**  
And Entertainment in the **GREATER TORRANCE AREA**

The Very Best In Entertainment  
**RESTAURANT GUIDE**

*Theater Guide*  
★ ★ ★ ★ ★

**South Bay Group to Hear Politicos**

Assemblyman Charles Chapel, Tom Coffee and Charles Soderstrom will address the South Bay Club of Federated Republican Women at a luncheon meeting next Thursday, Oct. 13, at the Fish Shanty, 4020 Pacific Coast Highway, Waveria Chapel, a California resident, for thirty-three years, has served as representative from the 46th Assembly District for more than a decade. Tom Coffee, Republican candidate for Congress in the 17th District, will discuss the voting record of the incumbent Congressman Cecil R. King. Charles Soderstrom, 17th Congressional Central Committee Chairman, a San Pedro businessman who has been active in political and civic affairs for many years,

will discuss "Republican Party Principles." Luncheon reservations may be made through Mrs. Bertha Walters, FR 2-2383.

**Boating Hints**

Skippers who keep their boats at home probably know well how it can use up the space in garage or yard. It's forever in the way and you simply can't blame children for climbing all over it. Just how much protection you need depends on your climate and type of boat. A glass fiber or metal hull needs less cover than varnished wood. An extra boat port with its own driveway can double as off-street parking space for guests. The cost might equal about 1 1/2 years mooring fees at the dock previously used.



RIGHT SEASONING is administered to tender barbequed chickens by Peter Petfoss, owner of the popular BBQ Pete restaurant at 1111th St. and Hawthorne Blvd. in Inglewood. Press Photo by Bob Wintermeyer.

**Gable House Opens New Room**

The Gable House Bowl at Hawthorne and Sepulveda in Torrance is opening a new Rik-Sha Steak Room Saturday, Oct. 8, it was announced today by Jerry Homel, proprietor of the 40 lane bowling establishment. According to Homel the new room is located on the upper deck and will serve New York Cut steaks entirely. He said "you'll never see a steak so big, and the price so low as this all new specialty of this room." Homel, who's brother is president of the Professional Bowling League, has priced his steaks at \$2.95 for 12 oz., \$3.95 for one pounders, \$3.50 for 12 oz. Continental Pepper steaks, and \$4.50 for one pound pepper steaks. A huge crowd is expected and reservations are needed. FR 8-2265 is the number to call to can in on the fun and festivities.

**School Board Will Sell Two Sites**

Possible sale of two pieces of property owned by the Torrance Unified School District was discussed Tuesday night by the Board of Education. Funds from the sale might be used to add to funds in a very tight budget. The two pieces of property in question are the "old" Waveria School site, just off Pacific Coast Hwy., and about two acres of the Columbia School site, 186th near Hawthorne. The Columbia site requires less space than the old El Nido site upon the same area. The board had been holding the property in hope that prices would increase to bring a good return.

Get in Orbit With Estelle and Denver  
**SPUTNIK**  
TAP BEER • HAMBURGERS  
22232 S. Normandie  
Torrance FA 8-9907

**Mexican FOOD** Open 10 a.m. - 10 p.m.  
**ACAPULCO CAFE**  
1406 W. Carson FA 8-9919  
(Near Western)

Gardena's Newest Family Restaurant  
YOU'LL LIKE OUR DELICIOUS FOOD AND FAST, FRIENDLY SERVICE  
4-Day Special Thursday, Friday, Saturday and Sunday  
**BREADED VEAL CUTLET \$1.00**  
(Full Course Dinner) including Soup, Salad, Choice of Potatoes, Bread and Butter, Vegetable, Dessert—Choice of Sherbet or Ice Cream, Hot Coffee, CHILDREN HALF PRICE ON ALL DINNERS  
We Prepare All Orders to Take Out  
**CRISS RESTAURANT**  
Open Daily, including Sundays, 7 a. m. to 9 p. m.  
Corner, 164th and Vermont DA 4-9292

BEER WINE PIZZA ITALIAN AMERICAN FOOD TO GO  
**DI CANDIA'S**  
RESTAURANT  
4011 W. REDONDO BEACH BLVD., LAWDALE  
Corner of Prairie  
FRONTIER 6-7330  
HOURS: CLOSED MONDAY  
Tuesday, Wednesday, Thursday, Sunday, 11 A.M. to 11 P.M.  
Friday and Saturday 11 A.M. to 2 A.M.

**Old Perry School to Be Parking Lot**

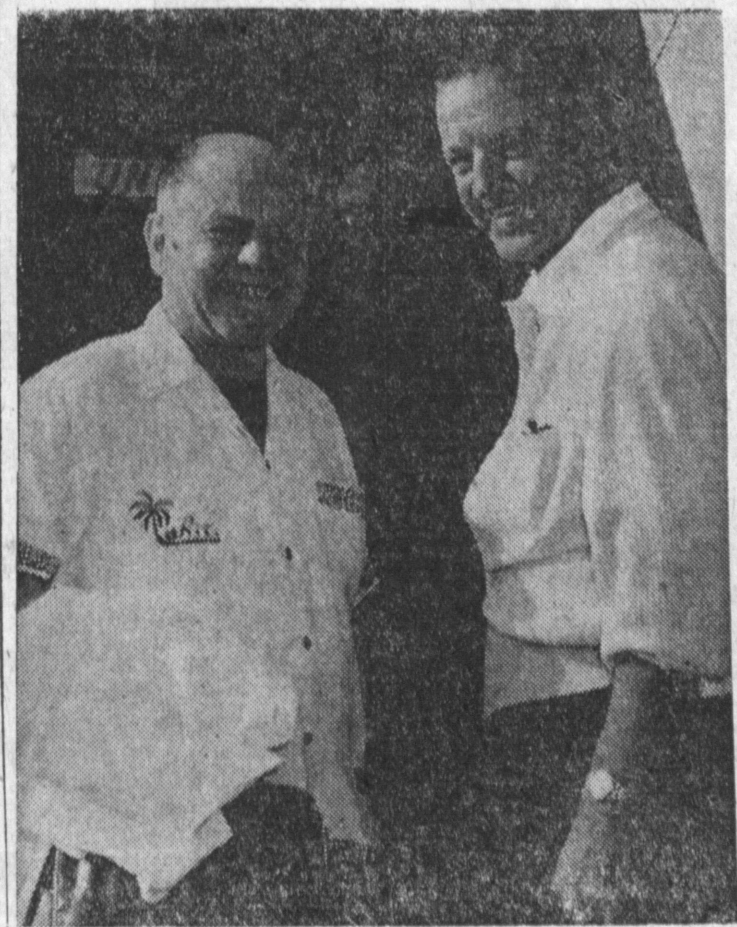
The site of the old administration building at Perry Elementary School soon will become a parking lot, the Torrance Board of Education decided Tuesday. Bids will be sought soon on the project. The old building had to be torn down. Ways also will be constructed for children to walk safely to school.

**ONION IN CRUST**

When making crust topping for meat pie, combine teaspoon or two of instant minced onion with liquid before adding to flour mixture. It's an easy trick that adds zesty onion flavor to meat dishes. If you smell smoke don't throw open the door without feeling it first, warns the Allstate Safety Crusade. A hot door usually means flames and gases are right on the other side, so look for another way out.

**STADIUM** FAirfax 8-6375  
Wednesday Thru Saturday  
Ava Gardner  
Gregory Peck in  
'On the Beach'  
Tab Hunter-Aldo Ray in  
'Battlecry'  
Sunday - Monday  
'Beyond the Time Barrier'  
and  
'The Day the World Ended'  
JAPANESE MOVIES EVERY TUESDAY

**HARBOR DRIVE-IN THEATRE**  
2322 SO VERMONT AT SEPULVEDA  
Wednesday Thru Saturday October 5, 6, 7, 8  
Marlon Brando-Anna Magnani Joanne Woodward Tennessee Williams' 'The Fugitive Kind' and Eddie Constantine Pier Angeli 'S.O.S. Pacific'  
Sunday, Monday, Tuesday October 9, 10, 11  
Paul Newman 'The Young Philadelphians' and Hardy Kruger - Stanley Baker Micheline Preste 'Chance Meeting'



TAHITIAN TALENT HUNT FOR TORRANCE—Returning to Tahiti is Pete Reitz (left) of The Polynesian in Torrance, who joined a tour presented by The Wild Goose in Sherman Oaks, conducted by its owner, Bob Hall (right). Reitz, who just set Tahitian dancer Tetua Pahoe to open Oct. 9 at The Polynesian, will seek other entertainers for the Torrance restaurant while in the South Seas.

**Stuffed Patties Are Popular**

A suggestion for a variation in beef patties is twin patties, with stuffing between! Instead of forming the patties in the usual way, 3/4 to 1 inch thick, make them half this thickness. Between each two patties place a filling. This may be grated American cheese, or blue cheese, or thin onion slices. Sweet pickle relish, stuffed olives, or grated raw potatoes are other suggestions. Then press the edges firmly together so that none of the filling can escape before or during cooking. The patties can be formed of seasoned ground beef, (1 teaspoon salt and 1/8 teaspoon pepper to 1 pound of meat is the basic proportion). Place them between waxed paper sheets to carry to the picnic.

**ROADSHOW**  
Thurs., Fri., Sat.  
James Stewart Lee Remick  
'Anatomy of a Murder'  
Also  
Al Hedison and June Laverick  
'Son of Robin Hood' (Color)  
DRIVE-IN THEATER Redondo Beach Blvd. DA 4-2664

It's New and Different in a Really Delicious Way  
**Bit o' Germany**  
Features the Best of the Savory and Tempting Old World Favorites  
Business Man's Lunch \$1.00  
IMPORTED DRAFT BEER FR 5-9125  
1304 S. Pacific Coast Hwy. REDONDO BEACH Closed Tuesdays—Parking in Rear

**CAVY PIZZERIA AND RESTAURANT**  
We Serve Quality Pizza  
1. Sausage, Mushroom, Cheese  
2. Four-way Combination  
3. Three-way Sausage, Mushroom, Pepperoni  
10 Varieties of Pizza  
A la Carte Salads with Garlic Bread—Lasagna—Spaghetti—Ravioli  
Sandwiches with Potato Chips—Hamburger, Meat Balls, Italian Sausage Italian Salsami, Mozzarella Cheese  
315 W. Carson St. FA 8-3050  
Near Moneta Ave., Torrance

Al Apodaca's . . .  
**Casa de Alfonso**  
Featuring Foods of Mexico  
Open 9 a.m.-8 p.m.—1407 Cravens—FA 8-9681

**DOTTIE'S DOLLAR DINER**  
OPENING SOON  
At 22133 S. Vermont Ave.  
Good food and reasonable prices of Dorothy Hill's other Torrance restaurant  
**DOTTIE'S GRILL**  
1542 W. CARSON (In Carson Place)  
DOTTIE'S GRILL CLOSED SUNDAYS

**Win Your Dream Home!**  
AS ADVERTISED ON KCOP TELEVISION - CHANNEL 13  
**FREE!**  
'The Hawaiian' a 4 Bedroom "Guaranteed Home"  
NOTHING TO BUY - NOTHING TO WRITE  
**COME IN - REGISTER TODAY**  
**WRAY'S Family RESTAURANT**  
1542 S. Crenshaw Gardena, Calif. OSborne 5-7344  
"Just Good Food"  
• Car Service  
• Fountain Service  
• Dining Room  
• Food to Take Home  
• Children's Menu  
\*Open 5:30 a.m. - 3 a.m.  
24 Hrs. Friday and Sat.

Try this for sighs  
**McDonald's**  
Before or after the game . . . or for a tasty snack anytime . . . bring your date to McDonald's. You'll be glad you did when you find out just how good a 15¢ Hamburger can be. Delicious and piping hot, served on a toasted bun, it's made with 100% pure beef, government inspected, and ground fresh daily. Come in today for the tastiest food in town at extra thrifty prices.  
McDONALD'S AMAZING MENU  
Pure Beef Hamburger . . . 15¢  
Tempting Cheeseburger . . . 19¢  
Triple-Thick Shakes . . . 20¢  
Golden French Fries . . . 10¢  
Thirst-Quenching Coke . . . 10¢  
Delightful Root Beer . . . 10¢  
Steaming Hot Coffee . . . 10¢  
Full-Flavor Orange Drink . . . 10¢  
Refreshing Cold Milk . . . 10¢  
the drive-in with the arches  
**McDonald's**  
17305 CRENSHAW TORRANCE  
Just North of 174th Street

**FLAMENCO at the Insomniac**  
The music and dance of the Spanish Gipsie; Oriental, Hebraic in origin and hundreds of years old, always masculine, always feminine, a wordless expression of love, of life, of death in flashing rhythm. New to the stage and rich in emotion, Flamenco promises unequalled excitement. The passion and rhythm of the Guitar following the dancers and pushing them on to greater heights, the ole and bravo of the audience and handclapping participation, this is Flamenco at the Insomniac!  
**EXPRESSIONS**  
Terramoto (earthquake) Valiente (Go Go) loma Que Toma (take it take it) Agua (water or sweat) Ole (bravo, praise you, etc.) and SILENCE during Guitar solos, please.  
**INSOMNIAC SCHEDULE**  
The finest in Flamenco Dance and Guitar every Thursday, Friday, Saturday and Sunday  
Jazz and Poetry or Folk Music every Monday, Tuesday and Wednesday  
Intermission—Silent Movie and Art Films Every Night  
South Bay's first European Coffee House and Art Fair, Continental Foods and Coffees and over 100,000 books and L.P. records. Specializing in the rare and unusual. Open 7 days from 10:30 A.M. to 4:00 P.M. (Group Accommodations Available.)  
**INSOMNIAC EUROPEAN COFFEE HOUSE AND BOOK AND ART FAIR**  
53 PIER AVENUE HERMOSA BEACH FR 4-9388

Featuring Vegas Style All You Can Eat  
**CHUCK WAGON \$2.50**  
Moored at 117 Avenue I, Redondo Beach, Calif.  
**WINDHAMMER**