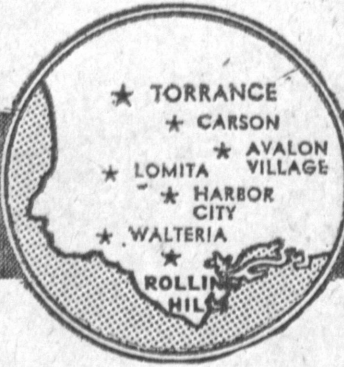


Prisoner Hangs Self In Jail Here

24-Hour
Want Ad Service
DA 5-1515



TORRANCE PRESS

3238 SEPULVEDA BLVD., TORRANCE, CALIFORNIA

Inside the Press

John Barry 5A
Mike Callas 5A
Classified 5-8B
Darlene Cope 5A
Sports 5A
TV Log 7A
Women 1-2B

VOLUME XII, NUMBER 46

SUNDAY, OCTOBER 2, 1960

10c A COPY

YWCA BARS LOCAL MEMBERS

Torrance Group Locked Out by Harbor Area

Members of the Young Women's Christian Association in Torrance, recently disassociated from its parent body, the YWCA Harbor Area, San Pedro, was fighting mad here this week, as it found its local meeting hall locked and barred.

"This is certainly high-handed and unfriendly," Pauline Greer, chairman, Torrance YWCA professional committee, declared today.

"We have been trying to establish our own Association here in Torrance for some time," Miss Greer announced. "Two weeks ago, we received a release from the Harbor Area to seek our own affiliation with the National YWCA; and now this!" she bristled.

"To add further insult, the program director here, Jean Lemcke, informed the Torrance Police Department that no one was to use the building unless she notified them of its use."

The local squabble blew up when a group of 55 high school girls showed up Wednesday evening at 2320 Carson St. YW for a meeting. They found the doors locked.

As a result, the teenagers held their meeting on the lawn, "sitting on the damp grass," Miss Greer declared.

The YWCA is on city ground, and is leased to the organization for a token \$1 a year payment. Most of the interior furniture and equipment was contributed by local businessmen.

"We could use the building in the past, but now they have changed locks, and told us we will have to ask permission whenever we want to schedule a meeting," Miss Greer announced.

The Harbor Area board of

School District Winning Battle for 26 Acre Site

The 26 acre former Naval Depot site, setting for a hassle between the Torrance School Board and private industry, may yet wind up as school property, Dr. J. H. Hull, superintendent, revealed today.

Refused the Torrance School Board recently by the General Service Administration and relegated to private industry as "better serving the public interest," the land was inspected recently by GSA officials, after a spate of letters hit the government agency.

"We are certainly most grateful to the Torrance Press and to its editorial stand for helping in this matter," Hull declared.

In a letter received this week from Franklin Floete, director of the GSA, Hull announced Floete wrote "we have been advised of your

Shopping Center Slated to Open Here October 8

Grand opening of the Park Western Shopping Center will be held this coming Saturday, Oct. 8, the Torrance Chamber of Commerce announced today.

Located on Western Ave. between Sepulveda Blvd. and 228th St., the new center will feature opening specials by all its stores all day Saturday, starting at 9:30 a.m. with a Ribbon-Cutting Ceremony.

Participating will be Torrance City Officials, Chamber leaders, James S. Bower, developer, and Betty Baker, 1960 "Miss Torrance."

Included in the center are: Dari-King Ice Cream Store, Horn 'O' Plenty Restaurant, Western Ave. Barber Shop, Torrance Shell Service and a modern self-service laundry.

Dope Suspect Uses Shirt in Suicide

Jerry Eugene De Goche, 18412 Ashley Ave., 24 years old, booked on suspicion of narcotics Friday night while on 2 year probation from South Bay Municipal Court, hanged himself Saturday morning with his shirt in the Torrance City Jail.

Sgt. Jack Hahn checked the prisoner at 9:45 Saturday morning. He was asking for cigarettes. At 9:59, the jail custodian observed the man hanging from the bars. He was dead at 10:13 a.m.



LOCKED OUT — Torrance YWCA leaders Pauline Greer and Flora Watson pound on the door of their own headquarters, Carson St. and Plaza Del Amo, as local members are locked out. The group's former parent body, the Harbor Area YW, claims "break-ins" necessitate new locks.

Torrance Chest Leaders Launch Advance Drive

Launched this week here the 1960 Community Chest Advanced Gifts campaign in Torrance is off to a "head start," leaders announced today.

Hosting the kick off luncheon was Torrance Advanced Gifts Chairman Dr. Robert Jackson.

"Too few people are aware," said Jackson, "of the extent of the Chest services here in Torrance; 9,121 people in our city were helped in the past 12 month period by agencies supported by the Community Chest."

Local agencies in Torrance providing services are many, he declared.

The Boy Scouts list 2,310 local boys participating in their program. Some 413 girls here are enrolled in the Camp Fire Girls. The Catholic Youth Organization served 413 young people in this area, and the Girl Scouts list 2,513, he stated.

Sen. Kennedy's Sister to Address Luncheon Here

Torrance Democrats were deep in plans this week for one of their most impressive events prior to the election, a luncheon and fashion show, starring Mrs. Peter Lawford, Senator Kennedy's sister, as key speaker, Wednesday, Oct. 19.

Area Brokerage Firm Plans Open House October 7

Party spokesmen announced today the event will be held at the Jumping Jack Restaurant, 2900 Pacific Coast Highway. Arrangements are under the direction of Mrs. Edmond Armstrong, recently appointed chairman, Torrance Women for Kennedy.

Mrs. Rosemary De Camp Shilder, wife of Judge John Shilder, South Bay Municipal Court, and a leading television and motion picture actress, will introduce the speaker.

Mrs. Lawford's topic for the gathering will be "Strategy for Peace," party leaders announced.

Reservations for the luncheon, \$3.50 per person, may be made through Mrs. Armstrong, 4309 Highgrove, FR 5-8646, or at the Democratic Party Headquarters in Torrance, FA 8-9704.

Proceeds of the affair will aid "Teas for TV" benefiting the Democratic nominee's campaign.



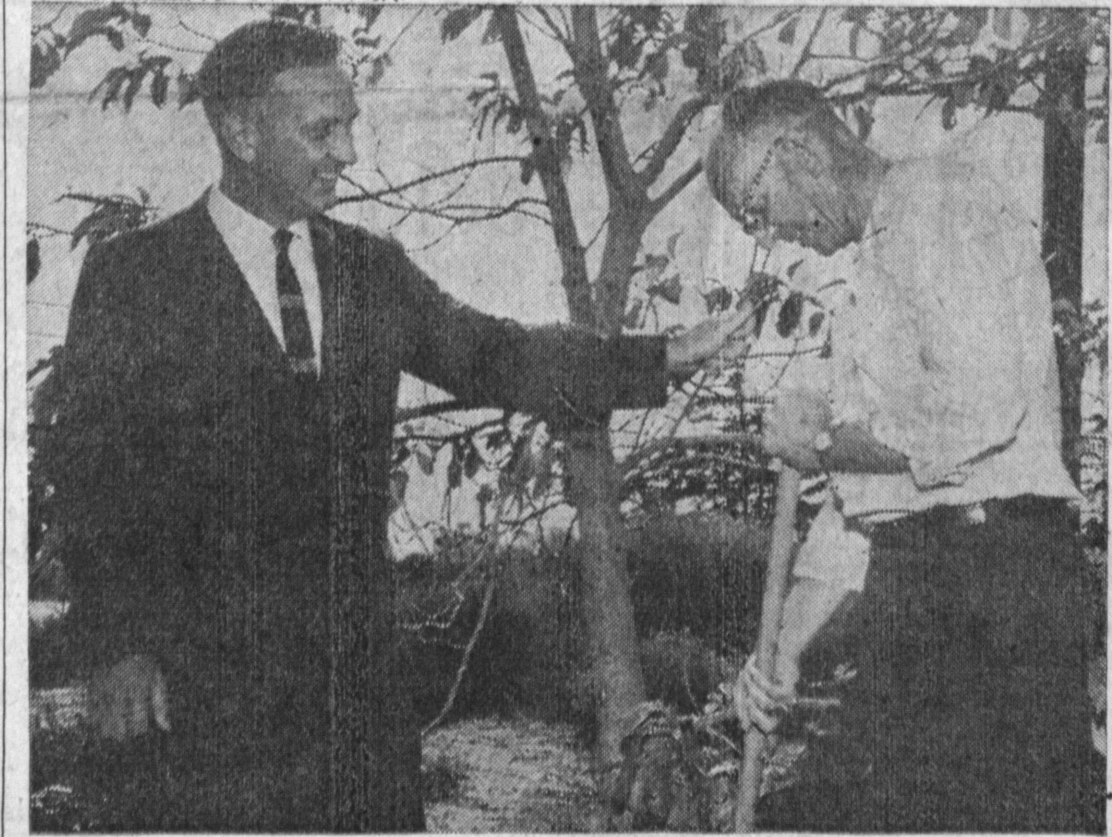
Dr. Rollin Smith to Direct Annual YMCA Breakfast

The Board of Managers of the Torrance YMCA has appointed Dr. Rollin R. Smith chairman for the fifteenth annual Good Neighbor Breakfast.

The huge affair which fed over 3,000 people last year, is slated Saturday, Oct. 22, from 6 a.m. until noon, at the Torrance YMCA headquarters, 2080 Washington Ave.

Major purpose of the breakfast will be to honor an unknown citizen who has demonstrated neighborly qualities during the past year.

Letters of nomination are



FIRST TREES—The first of a long series of trees eventually slated to beautify Torrance was moved out today, as the Del Amo Estate's recent gift to the city got under way. On hand digging the tree here are Casper W. Clemmer, park superintendent, and Douglas Horlander, Public Works Department.

TORRANCE-BOUND - Noted Columnist Drew Pearson will be honored here on November 12, Chamber of Commerce officials announced today. Named for his aid in promoting the sister-city idea with Konya, Turkey, and for his support of Torrance's growth, Pearson will be an all-day guest of the city, with many civic organizations participating.

TORRANCE AIRPORT LURES NEW INDUSTRY HERE



FLIGHT TIME—Torrance Airport manager Jack Egan, holding the end of the wind-T, underlines the fact that the city's own front-yard airport, unique among cities, is attracting industry here. Accessibility means business, says Egan.

In a burgeoning city as Torrance, exploding on all sides with new tracts, population and business, quietly overlooked as a dramatic magnet for new industry is the Torrance airport.

Unique among expanding cities throughout Southern California, Torrance offers industrial leaders an airport for executive type planes "right in their own backyard," according to Mayor Albert Isen.

"And industry certainly is moving here because of the easy accessibility of the airport," the Mayor adds, citing the addition of Magnavox Corporation to the Torrance complex of industries as the most recent example.

Master Plan Study

Next Tuesday evening, the Mayor and city council committee members Willy Blount, and Nickolas Drale, and airport manager Jack R. Egan will sit down to revise Torrance's master plan, to qualify for federal money to construct a new control tower. This is

the latest development in the airport saga.

Unknown to many newcomers in the area is the history of the Torrance Municipal Airport.

Historically, the land which now makes up the Torrance Municipal Airport developed from agricultural uses, truck gardening and feed grains, prior to World War II.

In 1942, the U.S. Army Air Force took over the land and improvements which the State of California had initiated through its Bureau of Public Roads.

Leased to Operator

The Army Corps of Engineers completed what was then called the Lomita Flight Strip. The Strip was used as a staging area for P-38 planes, as part of the Western Defense Command for the next few years.

In late 1945, the Air Force vacated the field, turning it over to the War Assets Administration. In 1948, Torrance acquired the property,

as a Grant Deed from the federal government.

In 1949, the airport was leased to an operator, who also performed services as airport manager. Two and a half years ago, March, 1958, the City of Torrance took over administration and management.

Avocational Flying

Activity at the airport is primarily avocational flying, however, an increasing number of executive and business aircraft has been generated by industries and manufacturing plants in Torrance, Jack Egan, manager, reports.

"Total annual operations per year approximately 150,000," Egan reports, "with a peak day count of 1020." By actual count, there is a peak hour count of 105, Egan adds.

In 1958, the first annual Airport Day was held. Last year, more than 10,000 people attended Airport Day, observing operations, exhibits and displays representing the airport's role in the community.

Airport Day

This year, the annual Airport Day was devoted to serving as host for an entire week, climaxing with the departure of the All-Women's Transcontinental Air Race, the Powder Puff Derby, which has attracted national attention.

Somé 80 planes and 150 women pilots entered the Derby race.

Operating on an annual budget of \$90,000 a year, and taking in some \$125,000 a year, the airport has a small amount annually for reinvestment for "much needed capital improvements," Egan declares.

The left-over monies made by the airport has permitted the city to build a portion of a service road along the commercial frontage and a loop taxi-way, which has opened up 20 aeronautical sites for hangar leasing.

All Hangars Rented

At present, one of the operators, Slim Kidwell, completing the construction of thirty T-hangars, has rented all of them prior to completion.

Ten operators make their living at the airport, providing the flying public with an entire gamut of services—sales, storage, repair, flight instruction, charter and rental.

These men include: Roger Keeny and Huge Crawford, Acme Aircraft; V. E. Noble, Aero Advertising; Don Tripp, Aero Propeller; Ed Dietrich, Collins Dietrich; Slim Kidwell Aviation; Chuck 'F'roman, Bellanca Service.

Bob Marks, Marks Aviation; Jim Gavin, Mercury Helicopter; Dave Stewart, Vegas Airways; and John Nagel, Nagel Aircraft.

Torrance is now operating its own control tower, at an annual cost of some \$21,000. In the works, as soon as council members and the city

4,000 See Tartars Best Inglewood

Details on Page 5A