

JOE ASHER, KING of LOW PRICES Sez . . .



Torrance Hours: Sun. thru Thurs., 9 to 7; Fri. & Sat., 9 to 9



# FARMER

MEAT SPECIALS 7 DAYS A WEEK

Meat Cut to Your Order Anytime!

**MARKET NO. 1: Corner of Carson**

**MARKET NO. 2: 203 Harbor Blvd**

Meat & Delicatessen Dept. Prices Effective Thurs., July 14 thru Wed. July 20

LIMIT RIGHTS RESERVED — ADVERTISED

## FANCY STEER BEEF! STEAK SPECIALS!

**SWISS STEAK  
CHUCK STEAK 59<sup>c</sup> lb**

High in Taste — Low in Price!

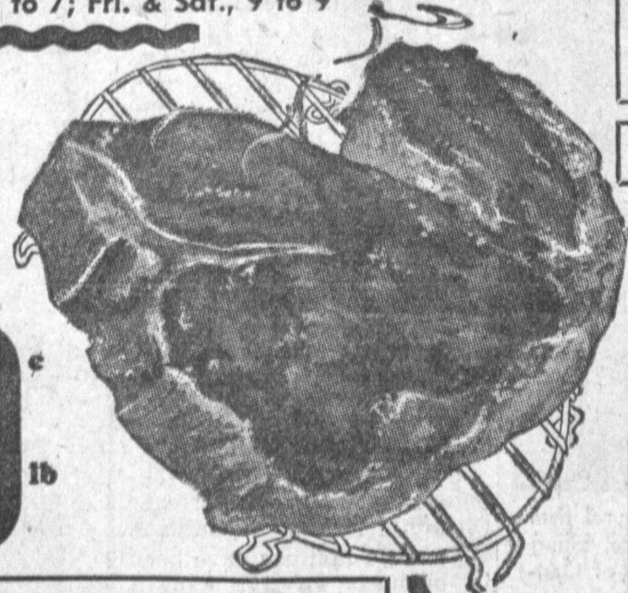
FANCY STEER BEEF!  
**ROUND STEAKS  
or RIB STEAKS 79<sup>c</sup> lb**

**T-BONE, SIRLOIN TIP  
OR PORTERHOUSE  
STEAKS 98<sup>c</sup> lb**

FLAVORFUL, FANCY STEER BEEF!

**NEW YORK STEAK**  
TRUE LUXURY IN TENDER TASTE!  
FANCY STEER BEEF  
**\$1.19 LB.**

**CLUB STEAK 89<sup>c</sup> lb**  
Selected For Bar-B-Q



## SPARERIBS

Lean, Meaty  
Small Size  
Eastern,  
Grain-Fed Pork

**49<sup>c</sup> lb**

MILK-FED

## VEAL

**ROAST CHOPS 49<sup>c</sup> lb.**  
Rump or Leg Shldr. Cut

**MONTEREY JACK CHEESE 49<sup>c</sup> lb.**  
Creamy, Delicious!

**Tangy Wisconsin LONGHORN CHEESE 59<sup>c</sup> lb.**

1-LB. PKG.  
**REX LARD 17<sup>c</sup>**

## Fancy FRYERS



WHOLE BODY

Cut up  
**33<sup>c</sup> lb**

**29<sup>c</sup> lb**

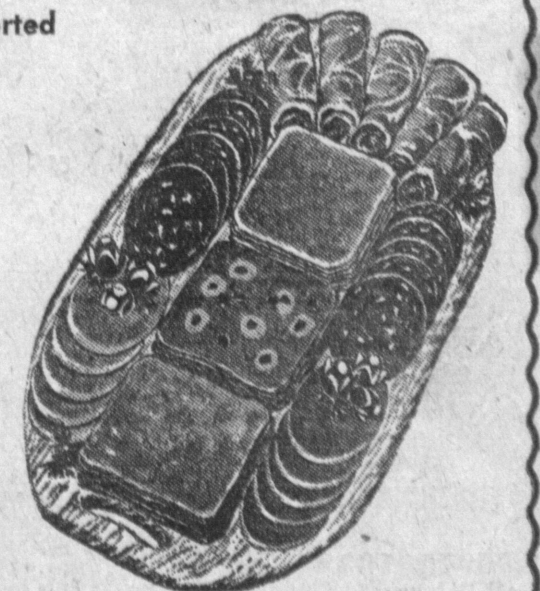


**GROUND ROUND 69<sup>c</sup> lb**  
Extra Lean Fancy Steer Beef

**GROUND CHUCK 3<sup>LBS</sup> \$1.29**  
Fancy Steer Beef  
Extra Lean 45c lb.

**COLD CUTS 5<sup>LBS</sup> 99<sup>c</sup>**  
Top Quality, Assorted Fresh-Sliced Ends

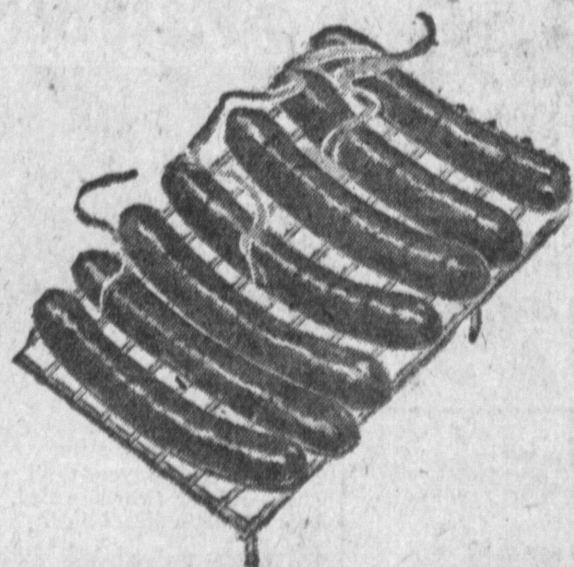
**ALL-MEAT SLICED BOLOGNA 3<sup>LBS</sup> \$1**



## HOT DOGS

Tender — Tasty — Delicious!

**3<sup>LBS</sup> 99<sup>c</sup>**



Attention Freezer Owners!

## WHOLE SIDES OF BEEF

Fancy Steer Beef,  
Cut and Wrapped To Order.  
SHARP-FROZEN FREE!  
Hind Quarter . . . . .59<sup>c</sup>

**49<sup>c</sup> lb**

**Manhattan RING BOLOGNA 29<sup>c</sup> lb**

**BEEF LIVER 29<sup>c</sup> lb.**  
Fresh, Tender

**SLICED BACON 3<sup>LBS</sup> 99<sup>c</sup>**

**EASTERN GRAIN-FED END CUTS PORK CHOPS 49<sup>c</sup> lb**

**Fresh Pork SAUSAGE 4<sup>LBS</sup> 99<sup>c</sup>**

**Yearling Lamb Sale**  
RIB CHOPS 45<sup>c</sup> lb.  
LOIN CHOPS 49<sup>c</sup> lb.  
SHLDR. CHOPS 45<sup>c</sup> lb.  
ROUND BONE 49<sup>c</sup> lb.

**Yearling LEG O' LAMB 39<sup>c</sup> lb.**