

# DENTAL PLATES

18 MONTHS  
TO PAY  
•  
FIRST  
PAYMENT  
JULY, 1960

REPAIRED AND RELINED WHILE-U-WAIT

**GAS OR PENTATHOL**  
FOR EXTRACTIONS AT THE SAME PRICE

COMPLETE DENTAL SERVICE  
• X-ray • Partial • Fillings • Pyorrhea Treatment  
OPEN EVENINGS AND SATURDAY—NO APPOINTMENT NECESSARY



**DR. TARR**  
CREDIT DENTIST

DIFFICULT  
CASES  
WELCOMED  
PENSIONERS  
WELCOMED

SE HABLA ESPAÑOL

FA 8-0250  
For Low Prices

2418 TORRANCE BLVD., NEAR CRENSHAW

Modern Ground Floor Offices  
with ample parking and air con-  
ditioning for your convenience.

## Knights Install Council Officers

Grand Knight-elect Lyle J. O'Hara and other new officers of the Los Crusados council, Knights of Columbus, will be installed in office during a special meeting of the fraternity to be held in the council chambers at Redondo Beach July 11 at 8 p.m.

The following members of the Torrance-Redondo fraternal organization will assume office in the council: Stacy Rodman, deputy grand knight; Joseph Platt, chancellor; Laurence Sargent, warden; Gerry Tondre, recording secretary; John McVey, advo-

cate; and Paul Hogan, treasurer.

Thomas Uribe, Jim Kritz and Phillip Munoz will be installed as guards, and Howard Hood, present grand knight of the council, as a trustee.

The annual Grand Knight's ball honoring the past chief executive officer of the council will be held July 23.

Of the 37,800 persons killed in motor vehicle accident last year in the United States, 36.5% were in cars which collided with another car. Almost 22% were pedestrians.



DICTION DEVOTEES—Miss Sarah Anderson, speech instructor at Harbor College, tells prospective summer-session students Keith Carlson and Sonja Savar contents of courses offered. Starting July 5, classes will include public speaking, voice, diction.

# SHOP NEWBERRY'S — IN — Downtown Torrance



## CHENILLE SPREADS

SPECIAL PURCHASE! Famous maker was closing out odd lots! All first quality, velvety cotton chenille spreads in wide assortment of styles and colors. Fringed and unfringed, full.

HURRY! Grand values!

**3<sup>47</sup>**

Reg. 3.98 to 5.98

## DINNERWARE SET

20-Piece Plastic "Chesteron" Product.  
Regular 5.99  
Now

**4<sup>44</sup>**



## MEN'S WALLET SPECIAL

All leather, good assortment of colors in blacks and browns; some styles with coin purses, removable pass case. Selected leathers, expertly tailored.

Guaranteed  
Reg. 1.98

**1<sup>69</sup>**

Ezy-Pour  
Decanter

New! For all hot and cold liquids. Colors to match every kitchen.  
Reg. \$1.29.

**97<sup>c</sup>**

**Newberrys**

**Big Value Buys**

"Mirror Aluminum-ware Set"

Consists of 7 cup percolator and 3 ass't'd. pans. Reg. \$12.00.

**9<sup>95</sup>**

## PRESTO PRESSURE COOKERS

These famous make pressure cookers are now offered at a great savings to you. Special.

4 Quart Size  
Regular 15.95

SAVE \$5.00... **10.95**

6 Quart Size  
Regular 19.95

**14.95**



For girls...  
for tiny tots

**IMPORTED  
TENNIS  
SNEAKERS**

A sensational value! Sturdy Toyo cloth uppers, thick ridged rubber outsoles, built-in arch with cushion insole, Red or blue. Sizes 5-12 and 12½-3.

**87<sup>c</sup>**

Reg. 1.25

**Newberrys**

A Newberry  
Exclusive

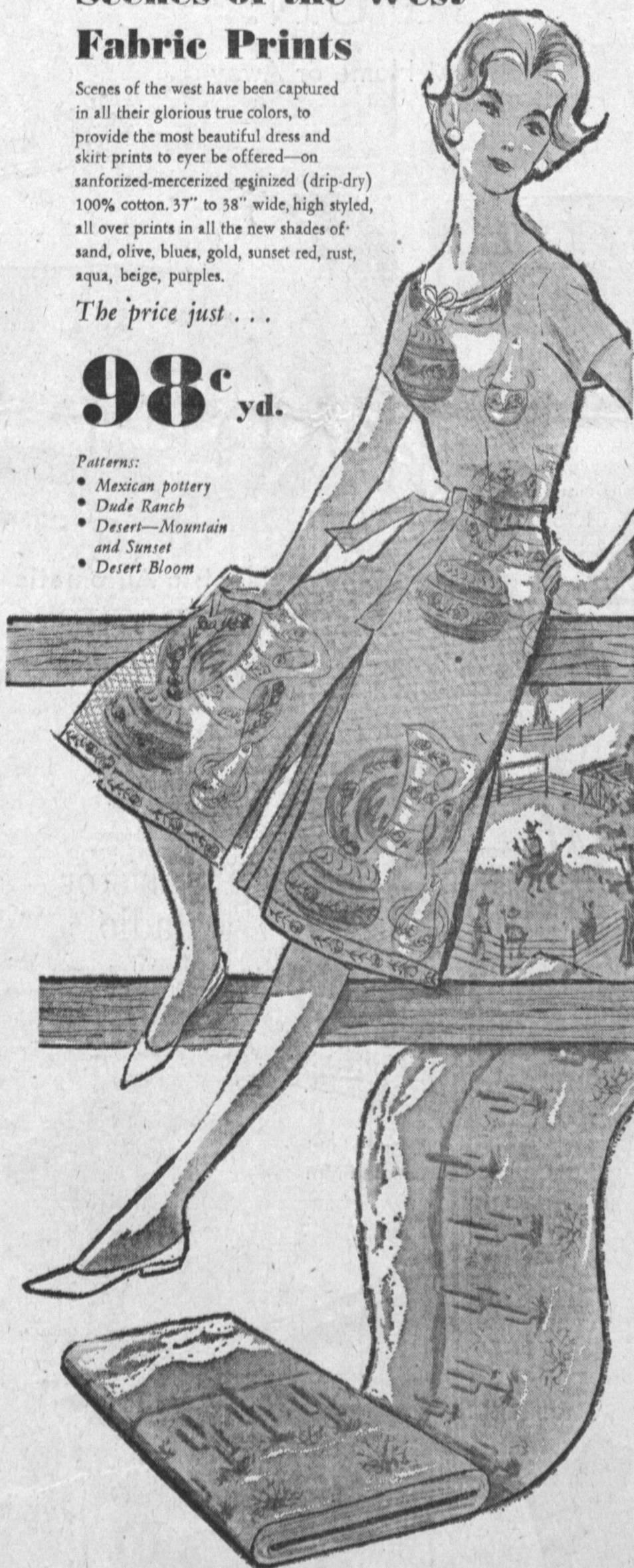
## Scenes of the West Fabric Prints

Scenes of the west have been captured in all their glorious true colors, to provide the most beautiful dress and skirt prints to ever be offered—on sanforized-mercerized reginized (drip-dry) 100% cotton. 37" to 38" wide, high styled, all over prints in all the new shades of sand, olive, blues, gold, sunset red, rust, aqua, beige, purples.

The price just...

**98<sup>c</sup> yd.**

Patterns:  
• Mexican pottery  
• Dude Ranch  
• Desert—Mountain and Sunset  
• Desert Bloom



## Director Studies Labor Disputes About Nationals

"Whatever comes out of the meeting this week in Washington, D.C. between a delegation of Southern California farmers and Secretary of Labor James P. Mitchell concerning the ban on use of Mexican Nationals by growers involved in labor disputes, I will follow to the letter Mitchell's interpretation of federal laws governing employment of foreign nationals in the United States," Irving H. Perluss, state director of employment, said.

This fact was reiterated today by Perluss in stressing that he is acting as an agent of the secretary of labor in administering the Wagner-Peyser Act and Public Law 78 and that he will continue to be guided by the federal officials' recommendations.

The pertinent regulation from the Wagner-Peyser Act, interpretation of which is a crucial issue in the controversy now going on between California farmers and organized labor, is entitled "Referrals in Labor Dispute Situations," the Employment

This regulation says that "No person shall be referred to a position the filling of which will aid directly or indirectly in filling a job which (1) is vacant because the former occupant is on strike or is being locked out in the course of a labor dispute, or (2) the filling of which is an issue in a labor dispute."

Under Public Law 78 where domestic workers cannot be referred because of the Wagner-Peyser labor dispute regulations, the secretary of labor has advised Perluss that he cannot authorize Mexican Nationals.

A group of California growers has been challenging this ban and Perluss arranged a meeting for them with the secretary of labor for clarification of the federal regulation.

The state employment Director has continually emphasized that Mexican National program functions under federal law and that the last word in interpreting its regulations must come from Secretary Mitchell. "The Department of Employment is administering the program only as an agent for the federal government," Perluss said, "and should the state fail to conform to the federal standards, it could lose 35 million dollars in federal grants."

## State Sets Record for Water Supply

An all-time Southern California water delivery record for a domestic water supply line was established June 22 when more than one billion gallons of Colorado River water were delivered to cities and areas within the Metropolitan Water District through the Colorado River aqueduct system.

Robert B. Diemer, general manager and chief engineer of the MWD, stated that during the 24-hour period the district delivered 1,003,800,000 gallons of water to cities and areas within its boundaries. The district extends into the five counties of Los Angeles, Orange, Riverside, San Bernardino and San Diego and includes 89 incorporated cities and large unincorporated areas.



## FLOWERS

By MARJORIE

in the

**Plush Horse**

RESTAURANT

FLOWERS FOR ALL OCCASIONS  
1700 PACIFIC COAST HWY., REDONDO  
FR. 5-3028

## BURKO

LUMBER • HARDWARE • PAINT  
HOURS: OPEN DAILY 8-6, SUNDAY 9-4

See Our  
WALL  
DISPLAY

ALL TYPES

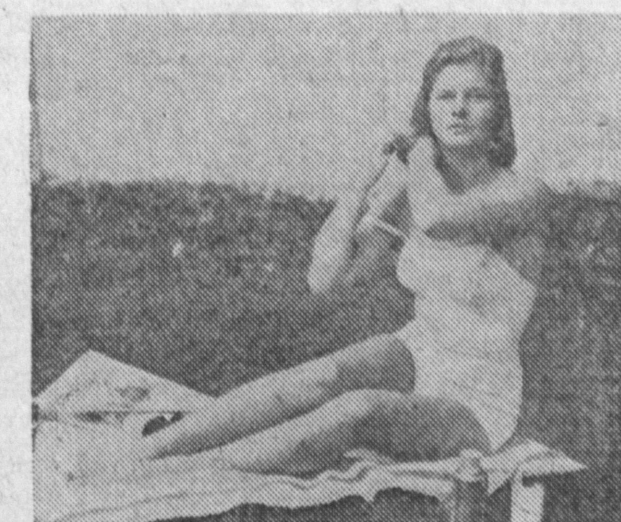
**SHELF LUMBER**

and

**SHELF BRACKETS**

23831 Hawthorne Blvd. Torrance  
Mon. thru Sat. 8-6 — Sunday 9-4  
Frontier 5-1566—2 Blocks North of Pacific Coast Hwy.

## CONTACTS HELP YOUR MAKEUP AND HAIR-DO!



## QUESTIONS AND ANSWERS ON CONTACT LENSES:

- Q. How do contacts help a woman's makeup and hair-do?
- A. After she spends hours on her hair and dress and makeup, the effect is not spoiled by disfiguring spectacles. Also, it gives her a much wider choice in hats and earrings.
- Q. Are contact lenses comfortable?
- A. There are no nerves on the surface of the eye, where the contact lens floats. Eyelids can feel contacts at first, but wearers soon get no sensation from contacts, and may wear them 24 hours a day.
- Q. What are my chances of being able to wear contacts?
- A. Your chances are 85%, as 8 1/2 people out of 10 who try contact lenses can wear them. What it takes mainly is some patience and the ability to accept a new idea.
- Q. How much do contact lenses cost per year?
- A. The cost per year may run lower than spectacles, as one contact lens prescription should last a lifetime, compared to the cost of 5 or 10 sets of glasses and frames during a lifetime.

## GET THE FACTS ABOUT CONTACTS—F-R-E-E!

The publishers of Contact Lens Newsletter recommend the following contact lens specialists in this area—be sure to mail coupon today for free literature that can change your life!

Your name \_\_\_\_\_  
Your address \_\_\_\_\_  
City \_\_\_\_\_ Zone \_\_\_\_\_ State \_\_\_\_\_  
TEAR OUT COUPON NOW AND MAIL TO:  
**DR. J. M. SOSS, Optometrist**  
1268 SARTORI—DOWNTOWN TORRANCE  
32 YEARS IN HARBOR AREA—FA 8-4402  
Offices in Wilmington at 810 Avalon Blvd.

Use Classified — DA 5-1515

**J.J. Newberry co.**

EL PRADO AND SARTORI  
DOWNTOWN TORRANCE