

Pacific Park Summer Season Opens Tomorrow

Starting tomorrow, Pacific Ocean Park goes into daily operation for the summer season. Hours will be: Sunday through Thursday 10:30 a.m. to 11 p.m.; Friday and Saturday 10:30 a.m. to 1 a.m.

The park's pay-one-price policy, inaugurated on an experimental basis during the spring months, will remain in effect all summer.

One ticket at \$1.50, with children under three admitted free, provides admission to all attractions, rides, and entertainment within the park.

Features include Neptune's Kingdom, the Enchanted Forest, the U.S.S. Nautilus replica, the Super Sea Circus and the Baby Animal Farm.

Admission also includes a series of exhibits by top flight artists; daily performances by The Great Nordeen dare-devil Swedish aerialist; a Friday evening live variety show, and weekend special events.

Starting this week "Wink Martindale's L.O.R. Dance Party" will be telecast live

Record Tourist Season Reported

Southern California has just finished a record-breaking spring tourist season, the All-Year Club reported today. A total of 839,000 visitors from other states and foreign countries were attracted here during March, April and May and spent \$132,471,000, according to Charles DeToy, president of the community tourist advertising organization.

from the park every afternoon, Monday through Friday from 3:30 to 4:30 p.m. on Channel 13.

Scientists Hear Sermon Address

"Is the Universe, Including Man, Evolved by Atomic Force?" will be the subject of the lesson-sermon to be today at First Church of Scientist, 1750 Manuel Ave.

John's account of the healing by Christ Jesus of the man who "was blind from his birth" will be included in the Bible selections.

Prior to restoring the man's sight Jesus declared, "I must work the works of him that sent me, while it is day... As long as I am in the world, I am the light of the world" (4, 5).

Mary Baker Eddy states in the Christian Science textbook, "Science and Health with Key to the Scriptures."

"The divine origin of Jesus gave him more than human power to expound the facts of creation, and demonstrate the one Mind which makes and governs man and the universe."

"The universe is filled with spiritual ideas, which He evolves, and they are obedient to the Mind that makes them."

Use classified ads for quick results. Phone DA 5-1515.

Torrance Firm Gets Contract

Torrance Precision Equipment Company, Inc., producer of magnetic and manual valves, recently received a \$16,162.50 contract for production of supplies needed by the Air Force Flight Test Center at Edwards Air Force Bases.

Los Angeles firms received 39 of the 46 contracts awarded to California companies for research, supplies and services. A total of \$995,958.75 of the \$1,135,720.52 awarded to state companies was given through contracts to firms in Los Angeles.

SHE'S SPEEDING TO FOOD GIANT...

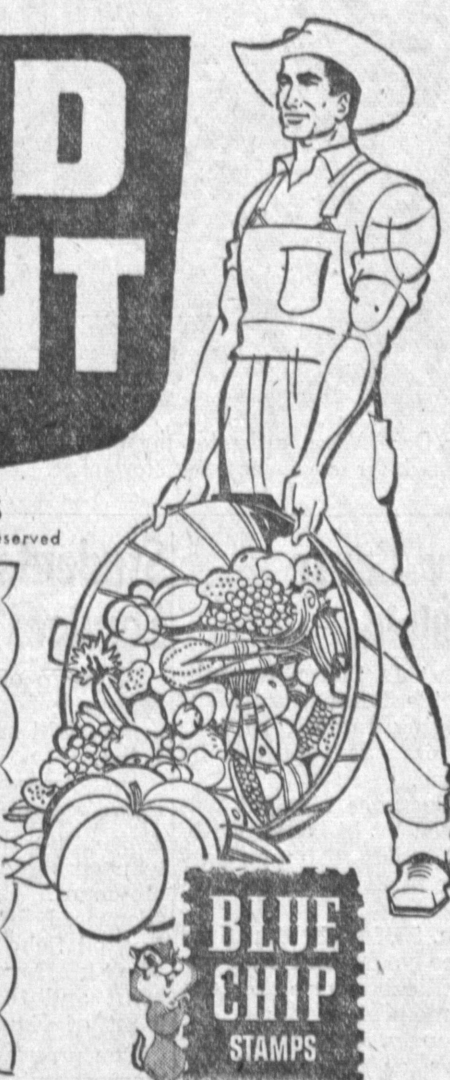
FOR FABULOUS VALUES!

Full speed ahead for fabulous First-of-the-Week buys at Food Giant! We never put the brakes on the low prices and top quality we offer!

Washday Wonder!
FAB Detergent
Price Includes "10c Off" Label
Giant Pkg. 59¢

QUALITY MARGARINE
NUCOA
Price Includes 3c Off Label
1-lb. Ctn. **19¢**

ORCHID
Paper Napkins
Paper Wrap 80 Count **10¢**



HACIENDA • Frozen
Enchilada Dinner Beef Tacos
Your Choice Reg. Pkg. **39¢**

With That Orchard-Fresh Flavor!
Mann's Apple Sauce
GREEN SPOT • Stringless • Cut

Tender Green Beans
DEL MONTE • Nutritious
Spinach
MA PERKINS • Tender
Green Peas
303 Cans of Your Choice **7 \$1.00**

XLNT • Price Includes "2c Off" Label
TAMALES
No. 300 Can **17¢**
CAL GOLD • Delicious and Refreshing
ORANGE JUICE
3 46-oz. Cans **\$1.00**

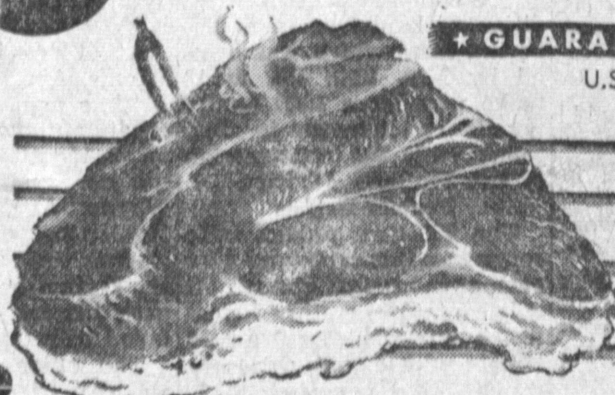
FARM FRESH PRODUCE
SWEET AND JUICY WATERMELON



FIRST OF THE SEASON
NECTARINES 2 lbs. **25¢**



SPECIAL STRIPE OFFER!
3 PAIRS HELANCA STRETCH NYLON GLOVES
WHITE • BEIGE • BLACK
\$3.00 value **ONLY \$1.00**
with 2 end flaps from any size Stripe Toothpaste carton



Perfect for barbecue and outdoor grill cooking! All our meats are extra-value trimmed with all excess fat and bone removed before weighing! Best center cuts!

U.S.D.A. "CHOICE" or F.G. "Banquet Perfect"
CHUCK STEAK
OR
7-BONE ROAST
None Priced Higher **49¢ lb**

U.S.D.A. Government Graded "Choice"
SMALL LOIN LAMB CHOPS
Lean and meaty. Remember the mint jelly when you serve these juicy lamb chops!
98¢ lb

HI-PROTEIN • Delicious • Nutritious
LAMB PATTIES Extra Value Trim **39¢ lb**
CERTI-FRESH • FROZEN
PERCH FILLETS 1-lb. Pkg. **39¢**
CERTI-FRESH • FROZEN
Breaded Shrimp 8-oz. Pkg. **59¢**

STAR-KIST • LIGHT MEAT
CHUNK TUNA No. 3/4 Can **39¢**
COPPER GLOW • Takes the Cloture out of Polishing!
COPPER CLEANER 10-oz. Can **29¢**
HACIENDA • FROZEN
MEXICAN DINNER 16-oz. Pkg. **49¢**

PARKA OLEO 1-lb. Pkg. **27¢**

KRAFT ITALIAN DRESSING 8-ounce Jar **35¢**

POMPEIAN OLIVE OIL 1-pt. Tin **79¢**

CANADA DRY HI-SPOT 6 Pack **49¢**

Delicatessen
FOOD GIANT'S SLICED ALL MEAT
BOLOGNA 6-oz. Pkg. **29¢**



AUTUMN THOUGHTS—A season-spanner of cool cotton with a woven-in motif. Strikes just the right note any time of year. Designed by Mr. Simon, it comes in brown-gray, navy-green.

Fifth Season Problem in Wardrobe Planning

The calendar may acknowledge only four seasons, but there is a fifth, a wardrobe-planning one.

It's that period at summer's end when fashion decrees that fall is here, but the thermometer rises in contradiction.

The what-to-wear dilemma is neatly solved by the transition cotton dresses, selling in the stores now. They are lightweight and summer cool, yet impeccably fall-mannered with handsome dark colorings and semiclassic styling.

Also transition cottons aren't limited to season-spanning duty. They'll play an in-transit role all summer long as the ideal traveling outfit on weekend and vacation trips.

Whether you travel by car, plane, bus, or jet, they always look trim and mint-fresh when you arrive at your destination. Patterned dark tones resist signs of travel-weariness, and the zephyr weight pure cotton fabric will give you the feeling as well as the look of air-conditioned serenity.

The new cool darklings are of lightweight woven gingham, in a variety of check and plaid designs. Often they add dobby weaves giving an extra texture enrichment and interest.

Styling is trimly uncluttered, with the distinctive fabrics providing the real fashion flair.

The easy-wearing styling pinpoints shirtwaist silhouettes, graceful semi-full skirts, the new gently lowered waistline, short sleeves with casual roll-up cuffs.

There's a refreshing shady-glen aura about the dark color blendings of greens,

blues, browns, and black, which provide the perfect foil for mood-changing jewelry and accessories.

For the sophisticated elegance of head-to-toe color harmony, wear a string of beads in the same deep tones.

Feel the need of a cheery brightening influence? Try frosty white jewelry... or perhaps a flush of turquoise against greens and blues; glowing amber or red on brown.

Leo Chricht Gets Degree

The University of Illinois will grant a bachelor of science degree to Leo Frank Chricht of Torrance today.

Approximately 2,730 candidates will be graduated today during commencement exercises, 2,077 receiving bachelor of science degrees.

TORRANCE PRESS
WANT ADS
DA 5-1515

TORRANCE PRESS
Established April 13, 1949
Published Semi-Weekly Thursday and Sunday. Entered as second class matter, Oct. 8, 1957, at Post Office, Torrance, California under act of March 3, 1879. Adjudicated a bona fide newspaper by Superior Court, Los Angeles County, Calif., Adjudicated Decree No. L. B. 2258, April 2, 1958.
Offices and Plant:
3228 W. Sepulveda Blvd.
Torrance, California
Telephone: DA 5-1515
W. R. Zapras, Publisher
W. E. Kim, General Manager
Subscription Rates
(Payable in advance)
Carrier Delivery \$6 per Month
Local and Out-of-Town, per Year \$72.00
All manuscripts submitted at owner's risk. The Torrance Press can accept no responsibility for their return.

DID YOU KNOW by Ken



ENOUGH PAINT WAS USED BY AUTO REPAIRMAN LAST YEAR TO PAINT THE QUEEN MARY 6000 TIMES!
Over six million gallons of auto lacquer and enamel were used to refinish damaged cars. Damage to your car can be costly, if you're not adequately insured. Ask your agent how little it costs to get top-notch protection with State Farm.

JACK SMITH
1715 CABRILLO, TORRANCE FAIRfax 8-3803
STATE FARM MUTUAL
AUTOMOBILE INSURANCE COMPANY
Home Office: Bloomington, Illinois 61-40

In Gardena 14990 S. Cranshaw at Compton Blvd.
In Hawthorne 423 S. Hawthorne Blvd. at 132nd
In Inglewood 11202 S. Cranshaw Blvd. At Imperial
In Los Angeles 11208 S. Western Ave. at Imperial
In Manhattan Beach 2400 Sepulveda Blvd. at Marine
In North Torrance 4848 W. 190th St. at Anza
In Torrance 3731 Pacific Coast Hwy. at Hawthorne
In San Pedro 28849 S. Western Avenue