

Business and Finance



FUN DAYS—S. Carl Deneen, regional vice president of the 20th District of California Real Estate Association, is fitted with luau hat by Betty Koch Maier, entertainment-committee member, and Ben A. O'Dorisio, president of Pacific Ocean Park, as a preview to tomorrow, Friday's meeting of CREA directors. Lee Dawson and others will attend from Torrance.

Air Force Seeks Men for Jet-Age

The U.S. Air Force is looking for qualified young men who have the desire and are looking for the know-how to navigate jet-age aircraft.

This was made known today by S/Sgt. Leland E. Mason, Air Force area recruiter.

"High-school graduates," said Mason, "are eligible."

The first step is to call the USAF recruiting office at FA 8-1404 or visit Mason at 1319½ Sartori St. to get full details. Applicants are permitted to take screening tests to determine eligibility for this opportunity.

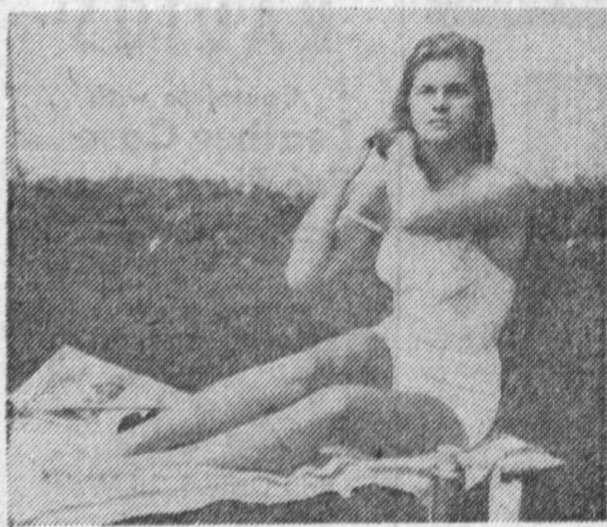
If successful in the initial testing, the applicant is sent

to an Air Force base for further mental tests and a thorough physical examination. Qualified applicants then are assigned a flight class and go to Lackland Air Force Base in Texas for pre-flight training. Upon completion of this phase of training, primary and advanced navigation training follow in rapid succession.

Shoots 254

Bobby Silagy who rolls for 101 Radiators in the 555 Scratch League, came through with a 254 game in a match tilt Saturday night at Palos Verdes Bowl.

CONTACTS HELP YOUR MAKEUP AND HAIR-DO!



QUESTIONS AND ANSWERS ON CONTACT LENSES:

- Q. How do contacts help a woman's makeup and hair-do?
- A. After she spends hours on her hair and dress and makeup, the effect is not spoiled by disfiguring spectacles. Also, it gives her a much wider choice in hats and earrings.
- Q. Are contact lenses comfortable?
- A. There are no nerves on the surface of the eye, where the contact lens floats. Eyelids can feel contacts at first, but wearers soon get no sensation from contacts, and may wear them 24 hours a day.
- Q. What are my chances of being able to wear contacts?
- A. Your chances are 85%, as 8 1/2 people out of 10 who try contact lenses can wear them. What it takes mainly is some patience and the ability to accept a new idea.
- Q. How much do contact lenses cost per year?
- A. The cost per year may run lower than spectacles, as one contact lens prescription should last a lifetime, compared to the cost of 5 or 10 sets of glasses and frames during a lifetime.

GET THE FACTS ABOUT CONTACTS--F-R-E-E!

The publishers of Contact Lens Newsletter recommend the following contact lens specialists in this area---be sure to mail coupon today for free literature that can change your life!

Your name _____
Your address _____
City _____ Zone _____ State _____
TEAR OUT COUPON NOW AND MAIL TO:

DR. J. M. SOSS, Optometrist

1268 SARTORI--DOWNTOWN TORRANCE
Offices in Wilmington at 810 Avalon Blvd.
32 Years in Harbor Area

Torrance-Lomita Realtors Attend State Meet Tomorrow

Many members of the Torrance-Lomita Board of Realtors will attend committee meetings and the director's session of the California Real Estate Association at the Miramar in Santa Monica tomorrow and Saturday, it was announced by Lee R. Dawson, president of the board.

Lawrence Welk, band leader, will host realtors and their guests Saturday night. Preceding the dance, the realtors will enjoy a luau.

Twenty-five committees of the association will meet to discuss real-estate activities, and the board of directors will hold their 325th session at the Miramar Saturday.

Realtors from more than 100 boards in California operating multiple-listing services will attend a conference tomorrow, said Dawson. He said multiple listing is a service of local real-estate boards to supply information used by realtors and their salesmen to give home buyers a wide selection of homes. It also enables sellers to reach a large number of prospects through the services of the group of realtors who participate.

"Through this conference our realtors and salesmen will learn ways of improving their service to the public in the purchase and sale of real estate," said Dawson.

Fred Lamping of San Fernando Valley, chairman of

the California Real Estate Association multiple-listing committee, announced that Barbara Moss of Long Beach heads the program committee for the conference.

Scheduled to speak at the conference are Joe Henry, Santa Monica; Jess Watkins, Compton; Robert Payne, Fresno; Charles Schlupp, Inglewood; Arthur Pilant, Santa Ana; Fred Smith Burlingame; Tenny Moore, Long Beach; Tom Kiernan, Sacramento; Betty Stone, San Fernando Valley; Mary L. Vaughan, Burbank; Charles Janssen, San Fernando Valley; and Don Roberts, Whittier.

Entertainment will include a fashion luncheon, bus tour, visit to the Art Linkletter TV Show, and special fun at Pacific Ocean Park.

Edward L. Callahan of Los Angeles, president of the California Real Estate Association, will be the principal speaker at the luncheon.

Also on the program will be two past presidents of the National Association of Real Estate Boards: James Udell and Charles B. Shattuck, both of Los Angeles. Others participating will be James L. Rogers, president of the Santa Monica Board of Realtors, S. Carl Deneen, California Real Estate Association regional vice president; and H. Jackson Pontius, California Real Estate Association executive vice president.

Dow Chemical Vice President Retires from Active Service

Russell L. Curtis, vice president of the Dow Chemical Co., retired from active service yesterday.

He retired as general manager of Dow's Western Division in December, 1958, but retained his vice presidency and his position as Dow's senior officer on the West Coast.

He moved to San Francisco in January, 1939, shortly after the Great Western Electrochemical Company was merged with Dow. He became general manager of Dow's western division that year, a member of the Dow board of directors in 1948, and a vice president in 1949.

Curtis was born in Saginaw, Mich., and is a graduate of Oberlin College, Ohio. He joined Dow's sales department

at the company's headquarters in Midland, Mich., in 1922. He became assistant general sales manager for Dow in 1930, and held that position until he moved to the West.

He is a member of the board of directors of the Pacific National Bank of San Francisco, and is a board member of Dorr-Oliver of Stamford, Conn. His memberships in San Francisco include the Bohemian Club, the Cercle de l'Union, and the Merchants Exchange Club.

Dow's main plant on the West Coast is at Pittsburg. Other western production facilities are at Torrance and Seal Beach. Another facility will be completed at Kalama, Wash., in 1961.



RUSSELL L. CURTIS

Carbide Scholarship Established

Establishment of a Union Carbide engineering scholarship program has been announced by Morse G. Dial, chairman of the board and chief executive officer of Union Carbide Corp.

The program is one part of the corporation's over-all aid to education, which this year amounts to \$1,240,000 and includes assistance to graduate and undergraduate students in technical or scientific areas; grants to a wide cross section of colleges and educational organizations and associations; and educational refunds for Union Carbide employees. Also included is the corporation's continued support of TV's Continental Classroom which, this year, will present a course in contemporary mathematics.

Under the Program, 35 colleges will receive an annual grant-in-aid and select an incoming freshman each year as Union Carbide scholar. The scholar will receive financial assistance for tuition, books, and fees for the full four or five year academic course, provided he or she lives up to the conduct and

academic requirements of the college.

Graduates of secondary schools in the U.S. who have good scholastic standing and personal reputation, who are recommended by their school authorities, and who plan to enter the engineering field, are eligible for Union Carbide Engineering Scholarships. While the scholars are encouraged to gain the experience of industrial employment during their summer vacations, the awarding of a Union Carbide engineering scholarship places no obligation on either the student or the corporation in respect to employment before or after graduation.

National Supply Division Aide in New Post

James M. McFadden, controller of the Fluid Packed Pump Co. division of The National Supply Co., has been appointed general manager of the division. He succeeded Sidney A. Shuman, transferred to Pittsburgh as assistant to the president of National Supply.

McFadden started with Axelson Manufacturing Co. in 1937 as a field store serviceman, working on oil well pumps, and was later promoted to Axelson's accounting department.

He joined the Fluid Packed Pump Co., of Los Nietos, as treasurer and controller in 1953. Fluid Packed was bought by National Supply in 1959.



HONOR—Supervisor Kenneth Hahn displays scroll awarded by Lawndale City Council commending him for outstanding service and work for that city. Presentation was made at last week's testimonial dinner in his honor.

GET THE "INSIDE STORY" ON THE TORO MOWER THAT BAGS ITS CLIPPINGS!

Complete with Bagging Attachment, Leaf Mulcher

\$89⁹⁵

ONLY 55¢ DOWN — \$8.60 PER MONTH TRADES ACCEPTED

VACUUM-CLEANS YOUR LAWN! The New Toro Whirlwind cuts grass as no other rotary does—with a new "Wind Tunnel" action that freezes each blade of grass upright for a crisp, clean cut... then blows clippings into the bagging attachment.

And not only does this revolutionary mower bag your grass clippings, but also leaves, twigs, lawn litter—all are sucked up by the Whirlwind's super-vacuum and deposited in the bag for easy disposal.

The secret is inside the Whirlwind's unique housing—an exclusive Toro design. It has none of the indentations and corners that cause ordinary rotaries to form clumps—clippings have a clear track to be blown into the bag or dispersed uniformly over your lawn!

3-season workover! Use your new Toro Whirlwind for spring clean-up, summer mowing, fall leaf disposal! Come in for a free demonstration!

TORO

100% FINANCING or BANKAMERICARDS or INTERNATIONAL CREDIT CARDS

Bay Engine Mower

Lawnmower Sales & Service
Wholesale — Retail

5.E. Corner MANHATTAN BEACH BLVD. & AVIATION
Next to Richfield Station
OPEN 7 DAYS — 8 'til 6
FR. 4-9277

GALLENKAMP'S

JUNE SHOWER OF VALUES

HOUSE SLIPPERS.....1.00

WOMEN'S TENNIS CASUALS.....1.00

WOMEN'S PLAY SHOE.....2.00



GO-A-HEADS

33^C

GallenKamp's
shoes for the entire family

TORRANCE: 1350 EL PRADO

FAirfax 8-9608

Air Conditioned For Your Comfort

OPEN HOUSE



JUNE
THURS., 2
FRI., 3
SAT., 4

Mrs. Marian Suhr and her son Erik, cordially extend an invitation to visit their newly-remodeled salon.

Featuring the Famous

L'oreal Permanent Wave

For the Most Beautiful Natural Curl
Specialists in High Fashion Hair Coloring
Hair Goods Sales • Reconditioning

"GET ACQUAINTED" OFFER

One Week, Thursday Through Wednesday

COLD WAVE.....10⁵⁰

FR 5-4515

LADY FAIR

BEAUTY SALON
1815 S. CATALINA
Hollywood Riviera

FLOWERS

OPEN

7 DAYS A WEEK

HOURS:
Torrance Store — 9 to 9
Redondo Store — 8 to 9

Windsor Florist

FA 8-1260

Corner Crenshaw and

Torrance Blvd.

FR 8-2244

1032 S. Pacific Coast Hwy.